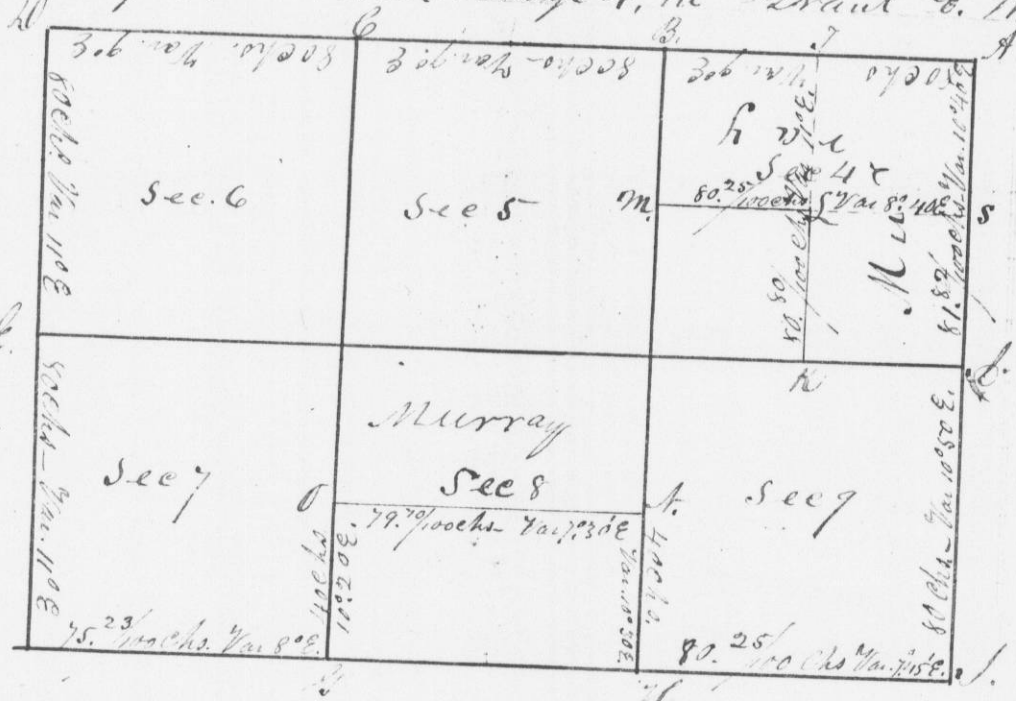


1/4 of S.W. 1/4

1/4 of S.W. 1/4

Survey made for Char. A. Murray of Secs 5, 6, 7, 9, the 1/4 of 8 and the E 1/2 and S.W. of 4, in Town 4, Range 4, in Grant Co. W.T.



Bearings N. 68° 15' E 171.7
at S. Edon. 168° 48' E 43

I hereby certify that the above is a true and correct statement and representation of the minutes of said survey made by me on the 20th, 21st and 22nd days of February A.D. 1844

Saml. C. Witt
Deputy Dist. Surveyor
of Grant Co. W.T.

1/4 of S.W. 1/4
1/4 of S.W. 1/4
minutes of
Surveyor
of Grant Co. W.T.