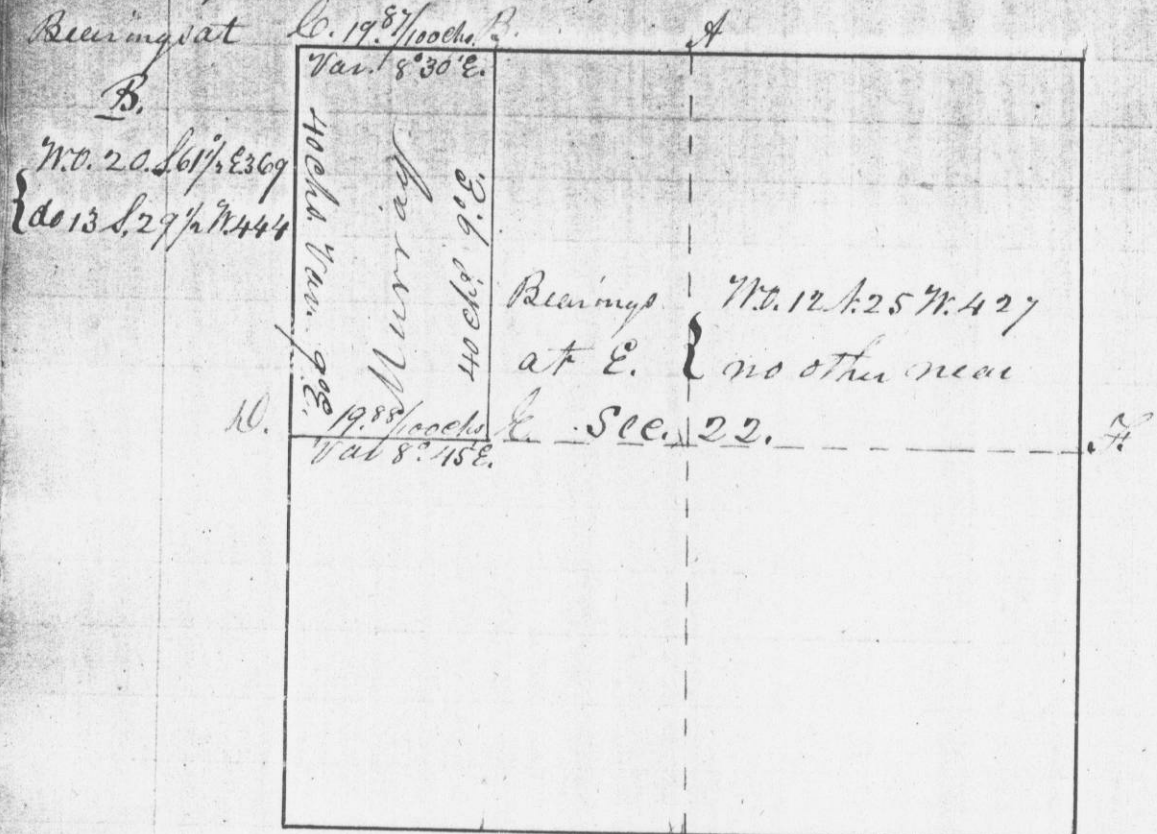


Survey made for Chas. H. Murray of the West half
of the N. W. 1/4 of Sec. 22, in Town 4 N., in Range 3 W.
of the 4th. P.M., in Grant Co. W. T.

Survey
half of
4th



I hereby certify that the above is a true
and correct representation and statement ~~and~~
~~statement~~ from the minutes of said survey, made
made by me on the 5th. day of Feb. Ad. 1844.

and co.
Minutes
day

Geo. C. Wiltse
Deft. Dist. Sur.
of Grant Co. W. T.