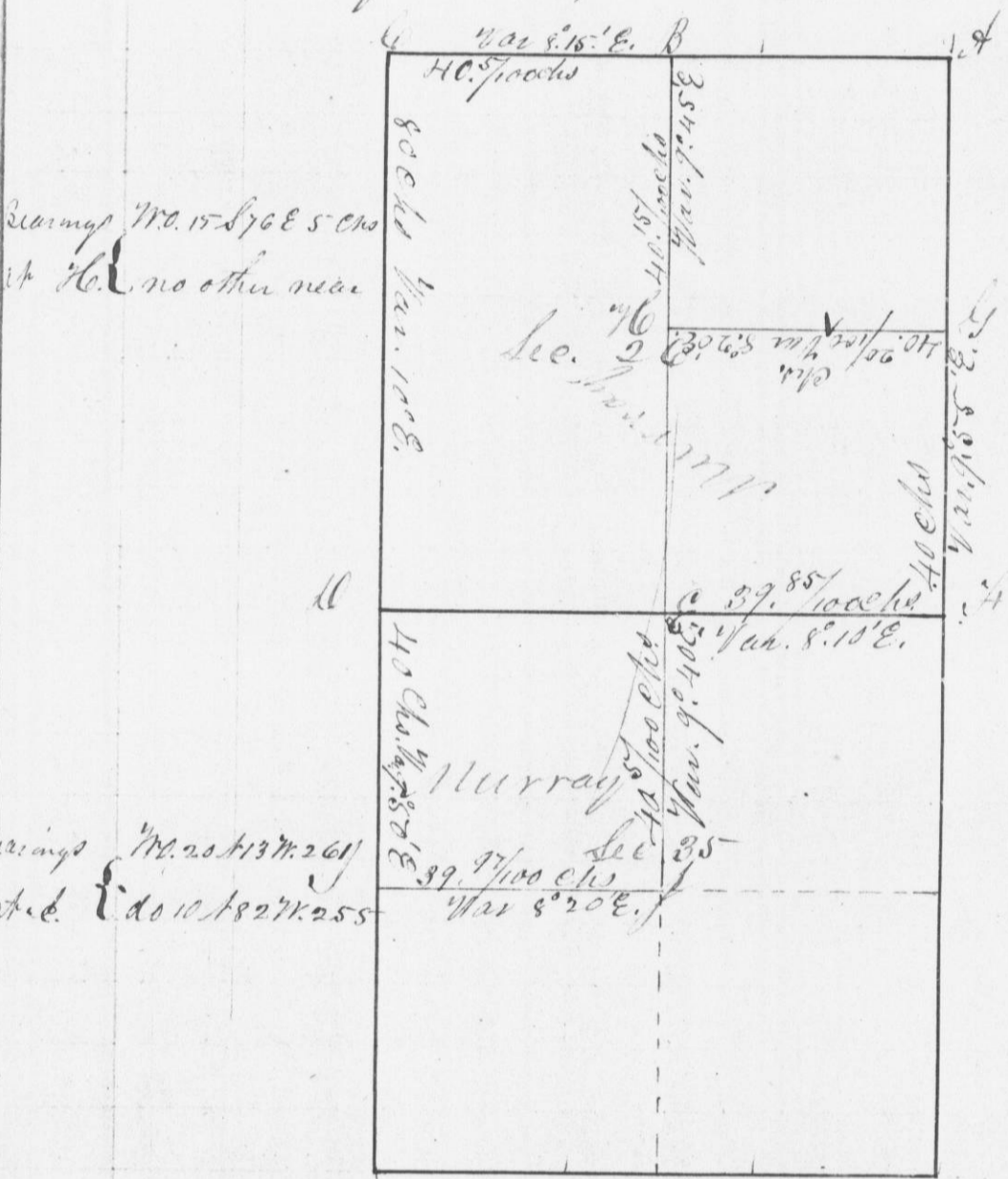


of the East  
Range 2  
S.  
4

Survey made for Chas. A. Murray of the S. 1/2 and  
N.W. 1/4 of Section 26 in Twp. 4. N. in Range 3 West  
and the S.W. of Sec. 35, in same Twp. & Range, Grant Co. W.T.



is a true  
minutes of said  
Survey Adh.  
C. Miller  
Dist. Sur.  
Grant Co. W.T.

Bearings No. 25 137 261  
at H.C. 1827 255

I hereby certify that the above is a true  
and correct representation and statement of the  
Minutes of said Survey, made by me, on the  
2<sup>d</sup> and 3<sup>d</sup> days of February A.D. 1844

Geo. W. Miller  
Dist. Sur. of  
Grant Co. W.T.