

174

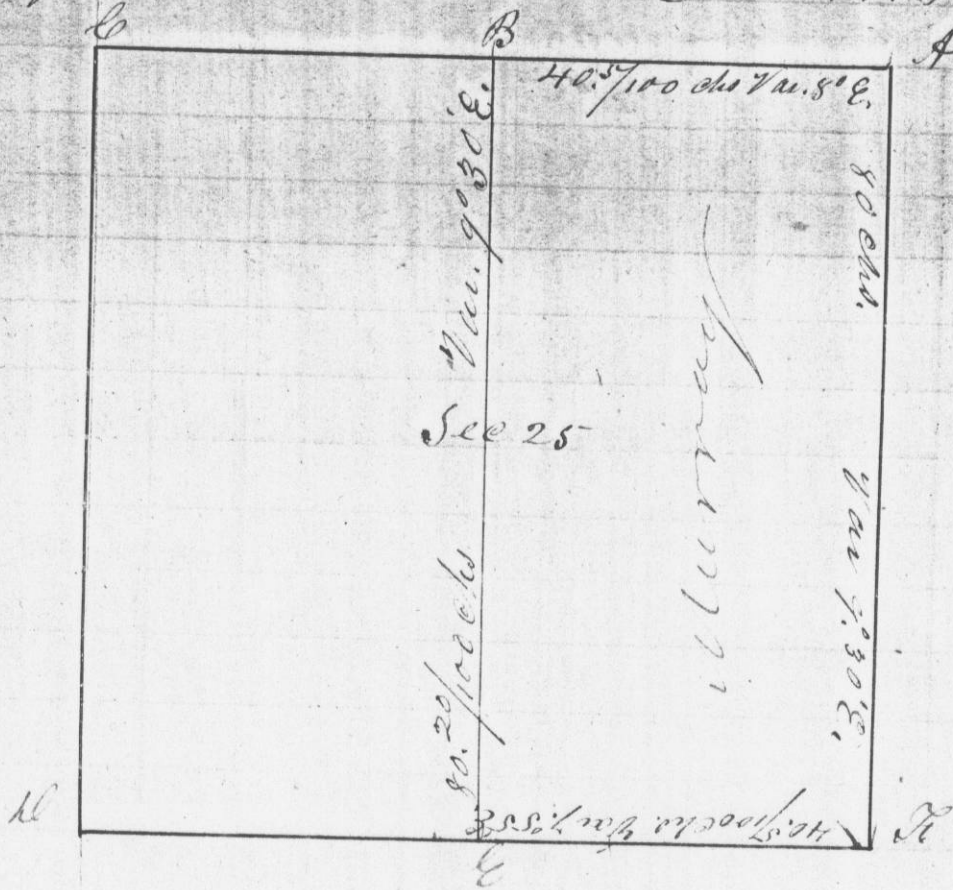
No. 287

Survey made for Chas. A. Murray of the East

Survey

half of Section 25, in Town 4 N. in Range 2 West of the 4th R.M. in Grant Co. W.T.

N.W. 1/4 of  
and the N.W.



Bearings W. 15. 8708  
at H. no other

I hereby certify that the above is a true and correct representation of the minutes of a Survey made by me on the 1st day of February A.D. 1844

Saml. C. Milne  
Deputy District Surveyor, of Grant Co. W.T.

Bearings W. 25. 5137  
Edw. 1844

And correct  
Minutes of  
D. and B. d.