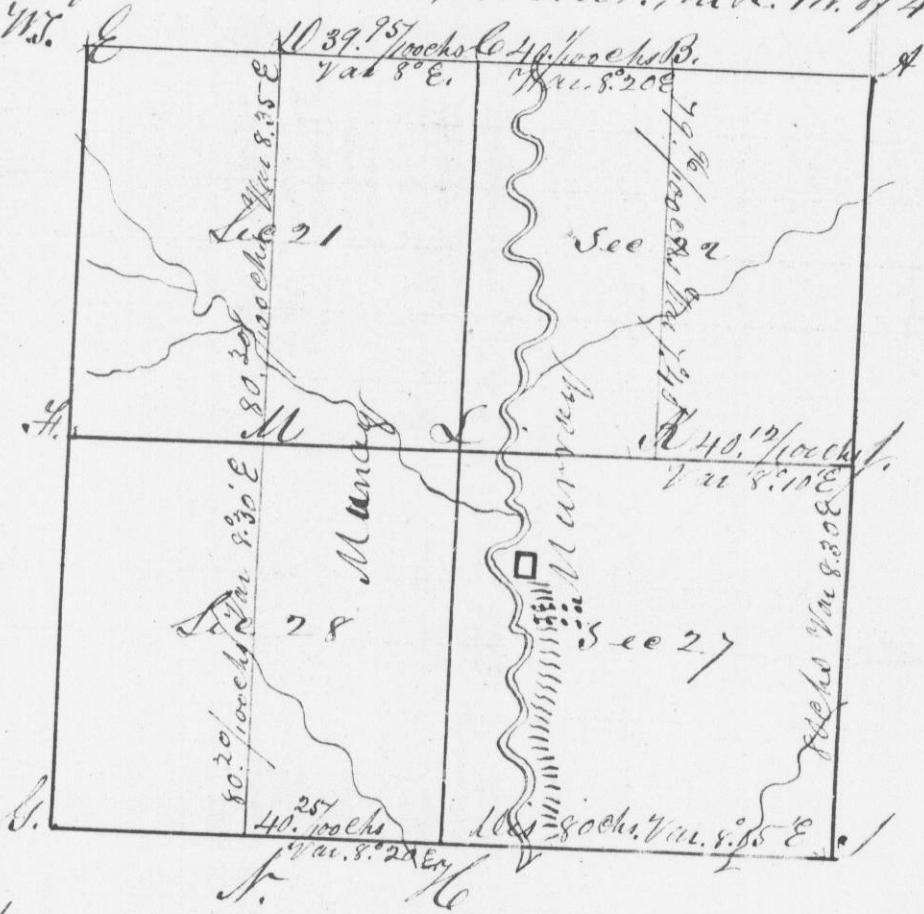


ite of a
Town of
and
nce of said

Survey made for Chas A Murray of
Sec. 27, the West halves of Sections 21 & 28
and the E 1/2 of Section 22, in T. 1. N., in R. 17. W. of 4th P. M.
in Grant Co. W. T.

on East
Main St.
W. corner
established
to S. W.
take - Thence
N. 54 1/2°
W. 35 1/3°
that the above
Survey, made
A. D. 1844.



I hereby certify that the above is a true and
correct representation and statement of said
Survey, made by me on the 24, 25, and 26th
Days of Aug. 1844.

Saml. C. Miltz
Deputy Dist Surveyor
of Grant Co. W. T.