

1843  
Greenman  
Surveyor

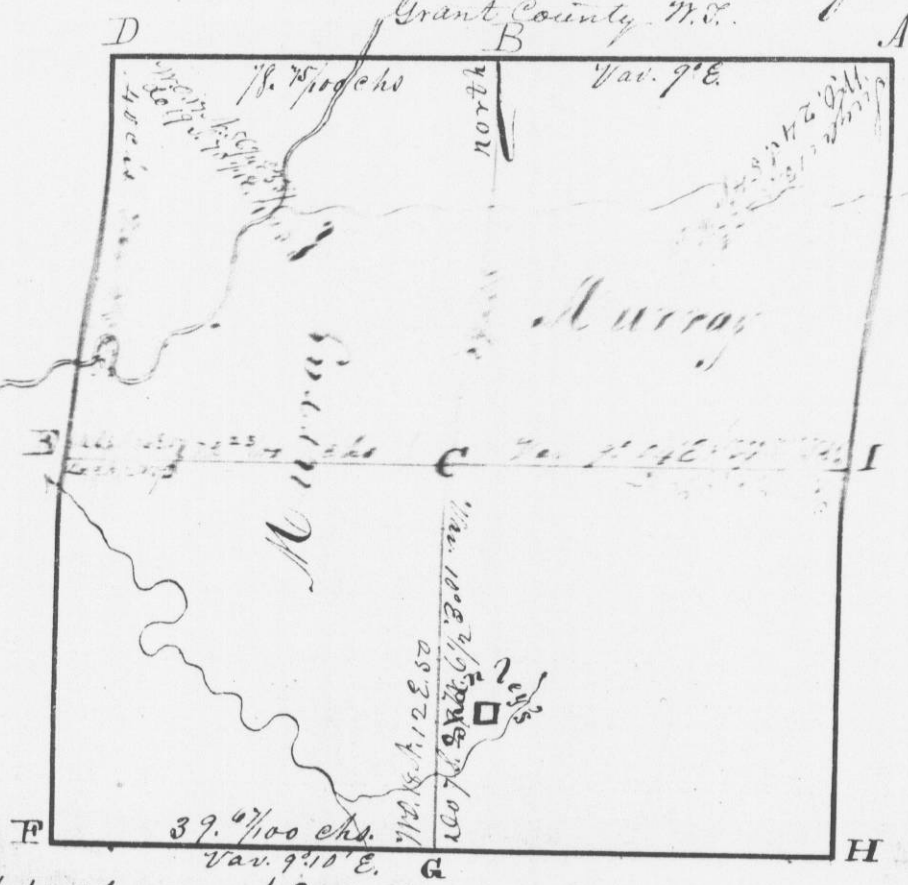
and 1/2 of N.E. 1/4 - N.C. 30 S. 65 N. 118. also N.C. 15 S. 10 E. 512.

The bearings of the S.E. corner ~~of~~ of 1/2 of N.E. ~~of~~ in N.C. 10 N. 35 1/2 E. 57 S. also N.C. 12 N. 46 7/8 E. 25 S. These bearings are to be a true and correct transcript from the minutes of a survey made by   
Murray 11th. 1844.   
Saml. C. Hite  
Capt. Surveyor Gb. W. S.

... of survey, at  
the N.E. 1/4 of  
... Range ...  
N.C. 11 S.  
... south side  
...  
... side of  
...  
...  
... links  
... rock. A prom  
... links. Var

... of said sec  
to N.W. corner  
... side of section  
... East 1/2 of N. 1/2  
... E. 29 S. then  
... corner of same  
... of 1/2 of  
... E. to N.E.

No. 276.  
Survey made for Chas. A. Murray in  
Section 21, Town 1, R. 3 W. of 4th. P.M.  
Grant County, W. Va.



the West half and N.E. qr.  
Commencing at D, as represented in the above Plat,  
East 1/2 of N. 1/2 East 78.75 chs to A. Connected back and blazed line.  
N. 52 E. 29 S. then Variation 9 E.  
From B. South 80 chs. to G. Blazed back to C. Variation 10 E.  
From E. East 79. 23/100 chs to I. Blazed back to C. Var. 9° 04' E.  
From G., West 39. 6/100 chs to F Blazed back Var. 9° 10' E.  
From E. North 40 chs to D blazed back to E. Variation 9° 57' E.