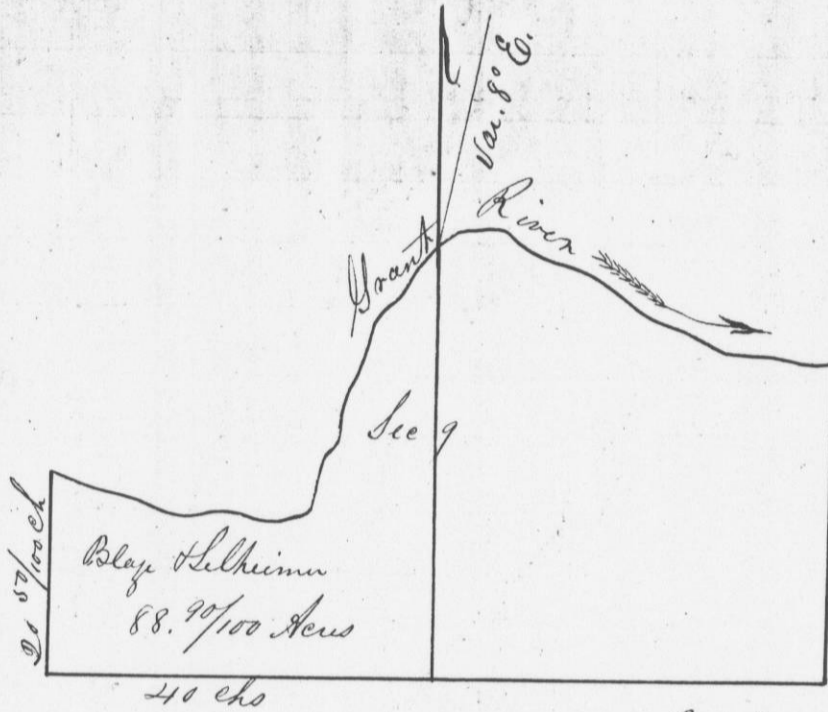


No 263



Survey No 263 made for Blaze Delkimm of the S.W. 1/4 of Sec. 9 T. 2 R. 3 West of 4th. P. M. T. S.

Commencing at 1/4 Post between 9416 } Ash 6 S. 41 N. 32 }
 } 240 6 S. 21 E. 25 }
 Thence North-courted variation 8° E - 43 chs. to Grant
 Re. the same being the N.E. corner of said S.W. 1/4
 { Willow 13 S. 1/2 N. 30 }
 { Yellow Birch 10 S. 45 S. N. 25 }

Original
 { N.W. corner - S. of Grant }
 { Elm 18 S. 69 N. 26 }
 { Birch 20 S. 28 N. 67 }
 Original

S.W. corner, or corner of Secs 8, 9, 16 & 17
 Willow 14 in. dia is the corner

Feb. 13th. 1843

A. A. Wiltse
 Depy Dist Sur G. C. T.

Survey No. 264 made for the N.E. 1/4 of Sec. 9 commencing at corner of 40/100 chs to 1/4 between since South. - corner same being the center east-courted variation being the Thence, following section to place Feb. 15th 1843