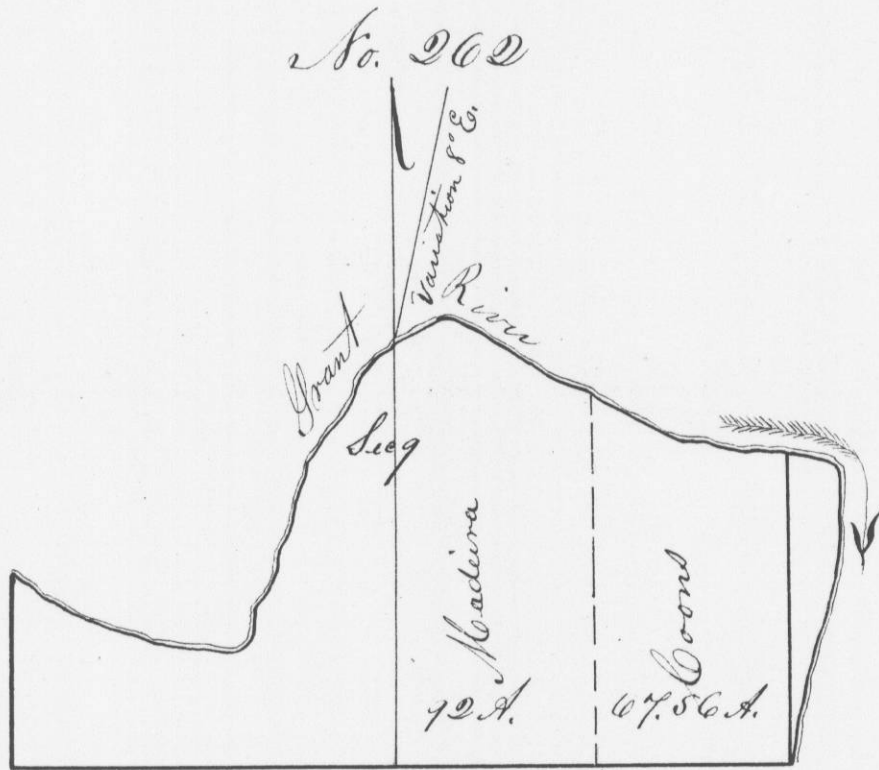


and 34, var.  
 being the N.E.  
 30 E 22  
 54 7 9 13  
 234 and 35  
 Wiltse  
 t. Sur. G.C. W.P.



Sec. 9  
 1/4 of the N.E. 1/4  
 1103 1/4 Post of  
 1/4 Post to  
 20. 16/100 Cha  
 N. 1/4 of N.E. 1/4  
 22 N. 35 E. 29  
 24 S. 76 1/4 E 55  
 rary post,  
 E 1/4 South,  
 1/4 of N.E. 1/4  
 110 S. 18 1/2 N. 39  
 60 S. 18 1/2 E 29  
 A. Wiltse  
 Dep. Dist. Sur. G.C. W.P.

Survey made for Madira & Coons of the S.E. 1/4 of Section  
 9 T. 2 R. 3 N. 4th P.M. W.T. - & division of same.

Commencing at 1/4 Post between Secs. 9 & 16 - Ash 6 A. 71 N. 32

Thence East 40. 7/100 Cha. to S.E. corner of said sec. 9 Maple 12 A. 88 E 35  
 Do 60. 21 E. 25  
 Do 8 S. 49 N. 66

Thence Connected West (var. 8° E.) 20. 7/100 Cha. to 1/8 Post. N. 13 A. 29, 20 N. 19

From 1/4 between 9 & 16 North (aspumia var. 8° E.) 80. 21/100 Cha. intersecting

Sec. line between 9 & 4 at 1/4 Post. At 43 Cha. on last mentioned line, set

Post on S. bank of Grant R. Willow 13 A. 1/2 N. 30

Yellow Birch 10 S. 45. 50 N. 25 Thence W. by S. to 1/4 Post

From 1/8th. Post of said, North, (var. 8° E.) - upon said line

of division 37. 82/100 Cha. to Grant River - Willow 14 S. 73 E 23

White Maples 50 1/2 N. 27

N.E. corner, upon Grant R. - Maple 6 S. 76 N. 26

Do 8 N. 74 E. 22

Feb. 13th. 1843

A. A. Wiltse  
 Dep. Dist. Sur. G.C. W.P.