

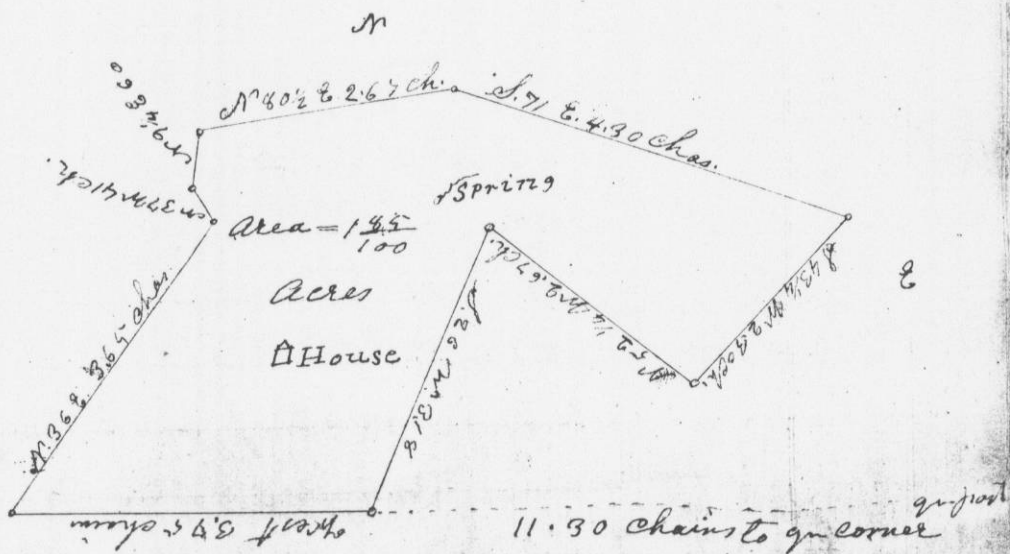
No 147 Surveyed for Mrs G Thompson a parcel of Land situated on the S. E. qn of the N. E. qn of Section No. 26 of Township No. three West of the 4<sup>th</sup> principal Meridian Commencing at a point from which the quarter Section post between sections No. 25 & 26 bears East 40° 35' 11.82 Chains also a W. Oak 24 in in diameter E. Bears S. 5 1/2 W. 17 Links

Thence according to the following Courses & distances

Calculation

Probably Range 3.

Course	Distances	N	S	E	W	
West	3.75				3.75	3.43
N 86 E	3.65	2.95		2.14		2.14
N 87 W	.41	.33			0.25	4.28
N 94 E	.60	.59		.09		4.03
N 82 1/2 E	2.67	.44		2.63		3.74
S. 71 E	4.30		1.40	4.06		3.47
S 48 1/4 W	2.30		1.64		1.57	3.96
N 52 1/4 W	2.67	1.63			2.11	6.59
S 26 W	3.14		2.86		1.40	9.22
						13.28
						17.34
						15.77
						14.20
						12.09
						9.94
						4.54
						7.16



April 19<sup>th</sup> 1842

Jas. E. Freeman

26435  
35436  
corner of Calhoun  
to 1/16 post  
137  
138  
Surveyor  
1/4 of S. W. qn.  
1/4 of Town  
corner of 17.14  
Section post  
to 1/16 Sec. post  
174 & 20 79.77  
to centre  
16 0 17 40.15 Ch.  
to 1/16 post  
161 W. 66  
16 5 1/2 W 38  
corner of West 1/2  
to 1/16 Sec. post  
25 1/2 E. 67  
4 1/2 E. 79  
J. E. Freeman  
Dist. Surveyor