

No. 126 Surveyed for Randolph Marlow

on a part of the N<sup>W</sup> q<sup>r</sup>. of Section 30 T4R3  
of which the following is a Diagram and field

Commencing at gr. post between S 30 & 31  
Running thence Suth 26.67 ch.

post at A. 6 N 63 1/2 W 43 L  
N. Elm 5 S. 44 1/2 W. 67 L.

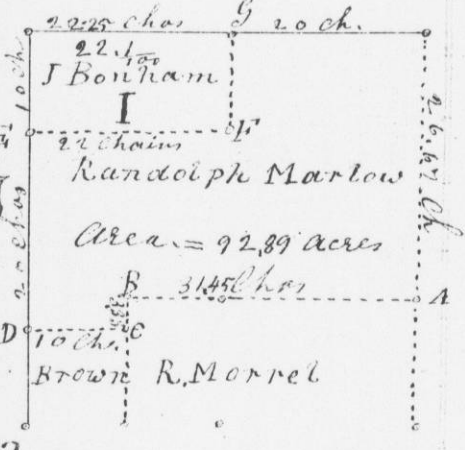
West 30 ch. to B Sugar 16  
S 42 N. 36 S. W. 14 N 61 W 68 L  
South 5.53 ch. to C  
Sugar 5 N 63 1/2 E. 44 L  
N. W. 14 S. 54 W. 66 L

Var. 9° 25'  
E.

West 10 ch. to D Ironwood  
S. 20 E. 9 Sugar 5 S 70 E 12 L  
North 2.0 ch. to E. N. O. 10-2  
N. 39 E. 4 L. W. O. 12 S. 73 E. 52 L. J. Brown

East 22 ch. to F. Sugar 4 N 59 1/2 W. 45 L.  
Sugar 7 S 42 1/2 E. 32 Links  
North 10 ch. to G at 1/2 post R. O. 14 S 32 1/2 E. 40  
Sugar 15 N 9 1/2 E. 41

East 2.0 ch. to gr. post at place of beginning  
Containing 92 & 89/100 acres  
March 12 1841 Jas. E. Freeman  
Dep. Dist. Surveyor



64A

No. 127 Surveyed for Joseph Bonham  
on the North end of the West 1/2 of N. W. q<sup>r</sup>.

Var. 9° 25'  
E.

S 50 T. 4 R. 3 Commencing at 1/2 post between  
R. O. 14 S 32 1/2 E. 40 Sugar 15 N 9 1/2 E. 41 L  
Secs. 30 & 31 Running thence South 10 chain

to F Sugar 4 N 59 1/2 W. 45 L. Sugar 7 S 42 1/2 E. 32 L.  
West 22 ch. post at E. N. O. 10 N 39 E. 4 L. W. O.  
12 S. 73 E. 52 Links North 10 ch. to cor. S 30 W  
on town line Containing 22.1 acres (See Survey

post

No. 126 Figure I.)  
March 12<sup>th</sup> 1841

Jas. E. Freeman  
Dep. Dist. Surveyor

the N. W. q<sup>r</sup>.  
Commencing  
on Town  
Char.  
Var. 47 L. N. 3  
11° 6. East 2  
N. O. 10  
on Sec  
41 Link  
ning  
Mar

65A

N. O. 10  
the East  
Commencing  
Kenn  
S 32 1/2 E.  
Var North  
11° E. N. O. 10  
N. O. 10  
March  
Dist

65B

No. 130  
Dey  
admiral  
Commencing  
Thence  
Sugar  
R. O. 24  
East. 20