

(33)

No. 60 Surveyed for Eliza J.

Hayward the S & N. E. qr. of Sec. 10 12 T. 5 R. 5 W.

Commencing at gr post between Secs 1 & 12 thence East 40 ch to cor of Sec 1 & 12 South 40 chs. to cor of 12 & 13 West 40 chs to cor. of 11, 12, 13 & 14 North 40 chs to gr post between 11 & 12 East 40 chs to an Internal Division post W. O. 15 S. 42 E. 59 Links W. O. 12 S. 44 W. 125 - S. North 39.85 chs. to place of beginning

May 19th 1840

Jan. & Freeman Dep. Dist Sur

33A

No. 61 Surveyed for Jarlton Brock & Co. the S. W. qr of N. E. qr. of Section No. 4 T. 2 R. 3 West

Post at A. W. O. 10 S. 21 E. 95 Links

Do 14 S. 16 W. 137 1/2 L

" " B Ironwood 4 S. 46 " 101 1/2

Do 7 " 42 " 163 A

" " C Geo. Hawse 10 " 12 E. 25 1/2

Post

At D W. O. 26 S. 12 1/2 W. 17 Links

" E W. O. 14 S. 39 1/4 E. 47 1/2 "

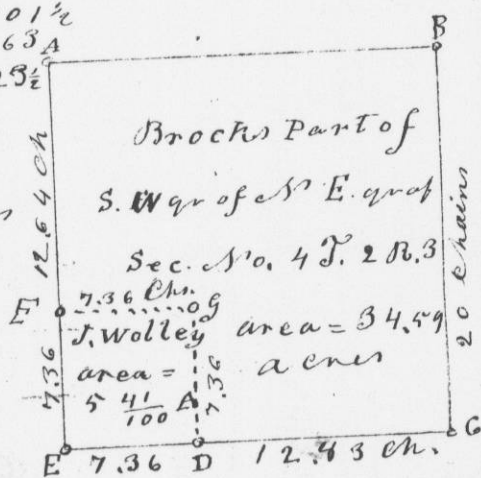
Do 16 N. 30 W. 74 "

" F Do 20 " 53 " 7 1/2 "

Do 14 S. 62 E. 60 "

" G Do 20 N. 54 3/4 W. 25 1/2 "

Do 16 " 58 E. 22 1/2 "



No. 62 Surveyed for Joseph Wolley a tract situated on the S W qr. corner of S. W. qr of N. E. qr. of S. No. 4 T. 2 R. 3 West for See Diagram and Field notes of No. 61

May 21st 1840

Jan. & Freeman - Dep. Dist. Surveyor

bridge
the S. E. qr.
of the
Indian
post between
12 chains
E. 64 L. W. O.
line
11 65 W. 58 1/2
to corner
40 chs to the
Freeman
Dist. Surveyor

and
Sprague
the N. E.
West
Secs. 7, 8, 17 & 18
to 1/6th post
N 10 E 33 L.
post W. O.
S. 44 E. 4 L.
post W. O.
10 1/2 W. 36
place of beginning

Freeman
Dep. Dist. Surveyor