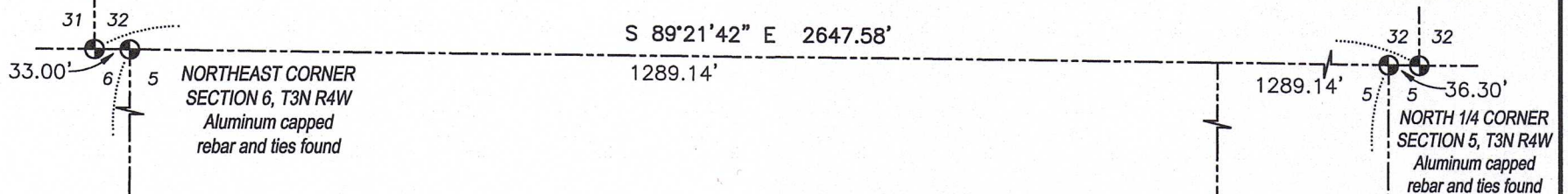


PLAT OF SURVEY

SOUTHWEST CORNER
SECTION 32, T4N R4W
Aluminum capped
rebar and ties found

SOUTH 1/4 CORNER
SECTION 32, T4N R4W
Aluminum capped
rebar and ties found



SURVEYOR'S CERTIFICATE:

I, Aaron J. Austin, Professional Wisconsin Land Surveyor, hereby certify:

That the South line and the East line of the Southwest Quarter (SW 1/4) of the Northwest Quarter (NW 1/4) of Section Five (5), Township Three (3) North, Range Four (4) West of the 4th P.M., Town of Waterloo, Grant County, Wisconsin, was surveyed, mapped and monumented as shown on this plat by me or under my direct supervision and field work was completed on 4-6-2021.

That this survey was prepared under the instructions of Russ Helbing.

That this survey complies with Chapter A-E 7 of the Wisconsin Administrative Code and to the best of my knowledge and belief, this plat is an accurate representation thereof.

That all plans that do not show a seal imprint in red ink may contain unauthorized alterations.

The certification contained on this document shall not apply to any copies.

Dated this 15th day of April, 2021.

Aaron J. Austin
Aaron J. Austin, S-2922



PREVIOUS SURVEY
BY LARRY AUSTIN
DATED 3-2-2009
BOOK 24, PAGE 78

NW 1/4 - NW 1/4

N 00°12'41\"/>

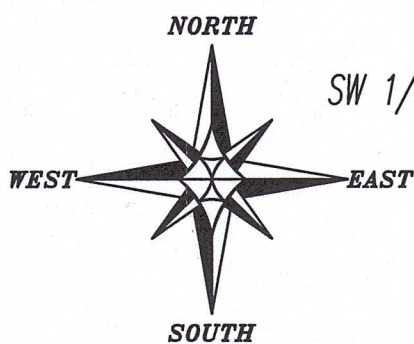
N.W. COR.
SW 1/4, NW 1/4

N.E. COR.
SW 1/4, NW 1/4

N 00°17'32\"/>

LEGEND

- ⊕ Section Corner
- 5/8" x 18" rebar set with cap
- ▲ Wood lath set
- ▲ Steel T-post set
- Boundary of Survey
- - - Section line
- - - Previously surveyed line



The East-West 1/4 line of Section 5 bears S 89°19'52" E according to the Grant County Coordinate System WISCORS NAD 83 (2011) which was determined by G.P.S. observation.

0 200 400

SCALE 1" = 200'

PREVIOUS SURVEY
BY LARRY AUSTIN
DATED 3-2-2009
BOOK 24, PAGE 78

WEST 1/4 CORNER
SECTION 5, T3N R4W
Aluminum capped
rebar and ties found

EAST 1/4 CORNER
SECTION 5, T3N R4W
Aluminum capped
rebar and ties found

SOUTH 1/4 CORNER
SECTION 5, T3N R4W
Aluminum capped
rebar and ties found

Prepared for: **RUSS HELBING**

Austin Engineering LLC
austinengineeringllc.com

4211 HWY 81 E, LANCASTER, WI 53813
PHONE: 608-723-6363 FAX: 608-723-6702

JOB NO: 20S190
H:\CRD\20S174
H:\PLAT\T3NR4W\05\20S190-HELBING

FIELDBOOK: TDSR
DRAWN BY: AJ AUSTIN
CREW: SHANE AUSTIN