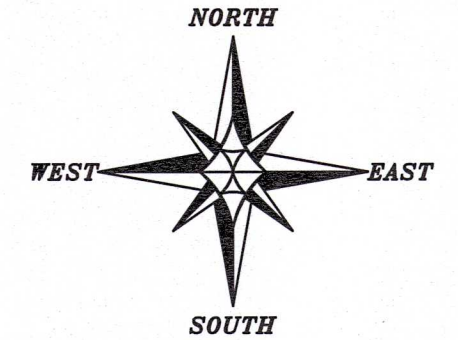
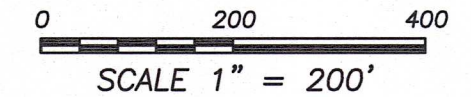


PLAT OF SURVEY

Prepared for: LEROY SENSENIG



The North line of the NW 1/4 of Section 20 bears N 89°47'51" E according to the Grant County Coordinate System WISCORS NAD 83 (2011) which was determined by G.P.S. observation.



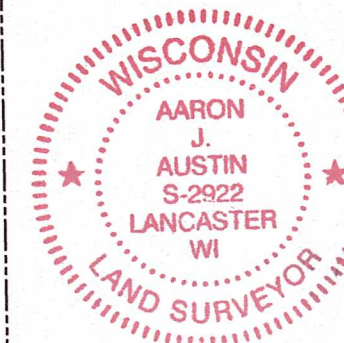
LEGEND

- ⊕ Section Corner
- 3/4" rebar found
- 3/4" x 18" rebar set with cap
- () Recorded as
- [] Property described in Document Number, Grant County Registry
- Boundary of Survey
- - - Section line
- - - Centerline
- - - Right of Way
- - - Previously surveyed line
- x - x - Existing fence
- ▭ Retaining Wall

NOTE: This area is currently being remonumented by the County Surveyor. The County Surveyor will be preparing new tie sheets for these corners.

Aaron J Austin

ALL PLANS THAT DO NOT SHOW A SEAL IMPRINT IN RED INK MAY CONTAIN UNAUTHORIZED ALTERATIONS. THE CERTIFICATION CONTAINED ON THIS DOCUMENT SHALL NOT APPLY TO ANY COPIES. DATED: 1-20-2025.



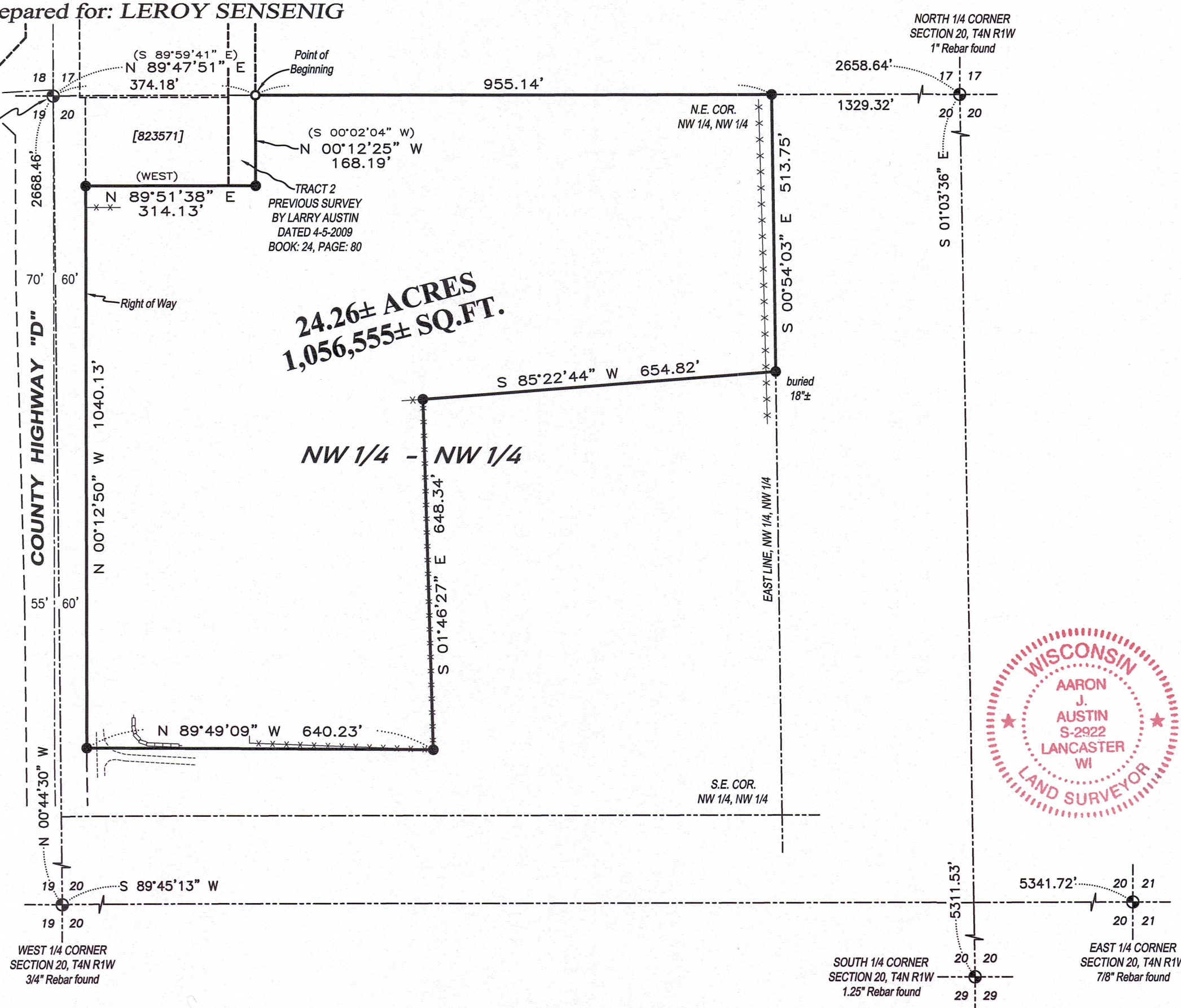
Austin Surveying, LLC

Land Surveying & Septic System Designs
austinsurveyingllc.com Phone: 608-723-6363
4211 HWY 81 E, LANCASTER, WI 53813

24.26± ACRES
1,056,555± SQ.FT.

NW 1/4 - NW 1/4

TRACT 2
PREVIOUS SURVEY
BY LARRY AUSTIN
DATED 4-5-2009
BOOK: 24, PAGE: 80



WEST 1/4 CORNER
SECTION 20, T4N R1W
3/4" Rebar found

SOUTH 1/4 CORNER
SECTION 20, T4N R1W
1.25" Rebar found

EAST 1/4 CORNER
SECTION 20, T4N R1W
7/8" Rebar found

NORTH 1/4 CORNER
SECTION 20, T4N R1W
1" Rebar found

N.E. COR.
NW 1/4, NW 1/4

S.E. COR.
NW 1/4, NW 1/4

EAST LINE, NW 1/4, NW 1/4

COUNTY HIGHWAY "D"

Right of Way

S 89°45'13" W

19 20

WEST 1/4 CORNER SECTION 20, T4N R1W 3/4" Rebar found

(S 89°59'41" E)
N 89°47'51" E
374.18'

(S 00°02'04" W)
N 00°12'25" W
168.19'

(WEST)
N 89°51'38" E
314.13'

N 00°12'50" W
1040.13'

Right of Way

60'

70'

60'

55'

60'

55'

60'

55'

60'

55'

60'

55'

60'

55'

60'

55'

60'

55'

60'

55'

60'

55'

60'

55'

60'

55'

60'

55'

60'

55'

60'

55'

60'

55'

60'

55'

60'

55'

60'

55'

60'

55'

60'

55'

60'

55'

60'

55'

60'

55'

60'

55'

60'

55'

60'

55'

60'

55'

60'

55'

60'

55'

60'

55'

60'

55'

60'

55'

60'

55'

60'

55'

60'

55'

60'

55'

60'

55'

60'

55'

60'

55'

60'

55'

60'

55'

60'

55'

60'

55'

60'

55'

60'

55'

60'

55'

60'

55'

60'

55'

60'

55'

60'

55'

60'

55'

60'

55'

60'

55'

60'

55'

60'

55'

60'

55'

60'

55'

60'

55'

60'

55'

60'

55'

60'

55'

60'

55'

60'

55'

60'

55'

60'

55'

60'

55'

60'

55'

60'

55'

60'

55'

60'

55'

60'

55'

60'

55'

60'

55'

60'

55'

60'

55'

60'

55'

60'

55'

60'

55'

60'

55'

60'

55'

60'

55'

60'

55'

60'

55'

60'

55'

60'

55'

60'

55'

60'

55'

60'

55'

60'

55'

60'

55'

60'

55'

60'

55'

60'

55'

60'

55'

60'

55'

60'

55'

60'

55'

60'

55'

60'

55'

60'

55'

60'

55'

60'

55'

60'

55'

60'

55'

60'

55'

60'

55'

60'

55'

60'

55'

60'

55'

60'

55'

60'

55'

60'

55'

60'

55'

60'

55'

60'

55'

60'

55'

60'

55'

60'

55'

60'

55'

60'

55'

60'

55'

60'

55'

60'

55'

60'

55'

60'

55'

60'

55'

PLAT OF SURVEY

DESCRIPTION:

Located in the Northwest Quarter (NW 1/4) of the Northwest Quarter (NW 1/4) of Section Twenty (20), Township Four (4) North, Range One (1) West of the 4th P.M., Town of Lima, Grant County, Wisconsin, and being described as follows:

Commencing at a 3/4" rebar marking the Northwest corner of said Section;
 thence North 89° 47' 51" East 374.18 feet along the North line of said Section to a 3/4" rebar marking the point of beginning;
 thence North 89° 47' 51" East 955.14 feet along said North line to a 3/4" rebar marking the Northeast corner of the Northwest Quarter (NW 1/4) of said Northwest Quarter (NW 1/4);
 thence South 00° 54' 03" East 513.75 feet along the East line of the Northwest Quarter (NW 1/4) of said Northwest Quarter (NW 1/4) to a 3/4" rebar;
 thence South 85° 22' 44" West 654.82 feet to a 3/4" rebar;
 thence South 01° 46' 27" East 648.34 feet to a 3/4" rebar;
 thence North 89° 49' 09" West 640.23 feet to a 3/4" rebar on the Easterly right of way of County Highway "D";
 thence North 00° 12' 50" West 1040.13 feet along said right of way to a 3/4" rebar marking the Southwest corner of that property as described in Document Number 823571, Grant County Registry;
 thence North 89° 51' 38" East 314.13 feet along the South line of said property to a 3/4" rebar marking the Southeast corner thereof;
 thence North 00° 12' 25" West 168.19 feet along the East line of said property to the point of beginning.

SURVEYOR'S CERTIFICATE:

I, Aaron J. Austin, Professional Wisconsin Land Surveyor, hereby certify:

That the above description was surveyed, mapped and monumented as shown on this plat by me or under my direct supervision and field work was completed on 1-16-2025.

That this survey was prepared under the instructions of Leroy Sensenig.

That this survey complies with Chapter A-E 7 of the Wisconsin Administrative Code and to the best of my knowledge and belief, this plat is an accurate representation thereof.

That all plans that do not show a seal imprint in red ink may contain unauthorized alterations.

The certification contained on this document shall not apply to any copies.

Dated this 20th day of January, 2025.

Aaron J. Austin

Aaron J. Austin, S-2922

Agent, Austin Surveying, LLC



Prepared for: **LEROY SENSENIG**
Austin Surveying, LLC

Land Surveying & Septic System Designs
 austinsurveyingllc.com Phone: 608-723-6363
 4211 HWY 81 E, LANCASTER, WI 53813

JOB NO: 24S084
 H:\CRD\24S084
 H:\PLAT\T4NR1W\20\24S084-SENSENI

DRAWN BY: AJ AUSTIN
 CREW CHIEF: SHANE AUSTIN
 CREW: O. AUSTIN, T. AUSTIN

SHEET 2 OF 2