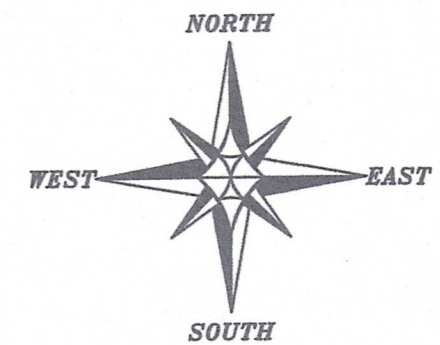
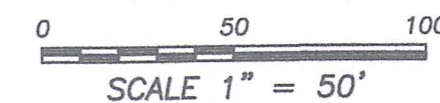


NORTH 1/4 CORNER
SECTION 18, T5N R1W
Aluminum Capped
rebar and ties found.



The East line of the NW 1/4 of Section 18 bears S 00°41'58" E according to the Grant County Coordinate System WISCONSIN NAD 83 (2011) which was determined by G.P.S. observation.



LEGEND

- ⊙ Section Corner
- 3/4" x 18" rebar set with cap
- 3/4" rebar found
- ⊕ 1/2" steel cotton gin spike found
- ⊕ Existing utility pole
- () Recorded as
- [] Property described in Document Number, Grant County Registry
- Boundary of Survey
- - - Section line
- - - Centerline
- - - Right of Way
- - - Platted lot line
- - - Previously surveyed line
- ▭ Existing Structure
- ▭ Existing Improvement
- Existing fence
- Existing mow line

DESCRIPTION:

Located in the Northeast Quarter (NE 1/4) of the Northwest Quarter (NW 1/4) and the Northwest Quarter (NW 1/4) of the Northeast Quarter (NE 1/4) of Section Eighteen (18), Township Five (5) North, Range One (1) West of the 4th P.M., and being a part of Lots 11, 12, 13 and 14 of Block "A" in the Village of Annaton, according to the recorded map or plat thereof, Town of Clifton, Grant County, Wisconsin, and being described as follows:

Commencing at an Aluminum Capped rebar marking the North Quarter (N 1/4) corner of said Section;
 thence South 00° 41' 58" East 890.93 feet along the West line of the Northeast Quarter (NE 1/4) of said Section to a 3/4" rebar marking the Northwest corner of Lot 15 of said Block "A", said corner being the point of beginning;
 thence continuing South 00° 41' 58" East 322.08 feet along said West line to a 1/2" steel cotton gin spike;
 thence South 89° 40' 20" West 152.96 feet along the South line of the North 88 links of Lots 13 and 14 to a 3/4" rebar;
 thence North 84° 09' 15" East 117.44 feet to a 3/4" rebar;
 thence North 11° 57' 53" East 37.80 feet to a 3/4" rebar;
 thence North 00° 12' 44" East 59.23 feet to a 3/4" rebar;
 thence North 15° 57' 14" East 41.18 feet to a 3/4" rebar;
 thence North 00° 04' 57" West 173.70 feet to a 3/4" rebar;
 thence North 50° 04' 57" East 211.23 feet to a 3/4" rebar;
 thence North 53° 34' 29" East 302.34 feet to a 3/4" rebar on the East line of said Lot 15;
 thence South 00° 41' 58" East 132.46 feet along the East line of said Lot 15 to a 3/4" rebar;
 thence South 65° 17' 53" West 433.48 feet along the North line of said Lot 15 to the point of beginning.

EASEMENT NOTES:

Other documentation will need to be recorded to clarify the intent, use, maintenance, assignments or other pertinent information of this easement.

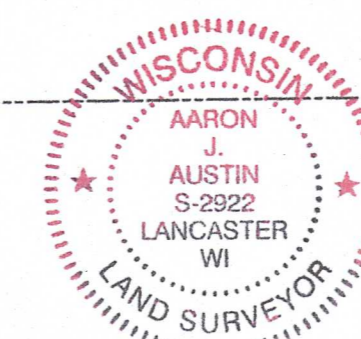
SURVEYOR'S CERTIFICATE:

I, Aaron J. Austin, Professional Wisconsin Land Surveyor, hereby certify:

That the above description was surveyed, mapped and monumented as shown on this plat by me or under my direct supervision and field work was completed on 7-23-2024.
 That this survey was prepared under the instructions of Derek Loy.
 That this survey complies with Chapter A-E 7 of the Wisconsin Administrative Code and to the best of my knowledge and belief, this plat is an accurate representation thereof.
 That all plans that do not show a seal imprint in red ink may contain unauthorized alterations.
 The certification contained on this document shall not apply to any copies.

Dated this 24th day of July, 2024.

Aaron J. Austin
 Aaron J. Austin, S-2922
 Agent, Austin Surveying, LLC



PLAT OF SURVEY
 PREPARED FOR: DEREK LOY
 LOCATED IN SECTION 18, T5N, R1W, TOWN OF CLIFTON, GRANT COUNTY, WISCONSIN

Austin Surveying, LLC
 Land Surveying & Septic System Designs
 austinsurveyingllc.com Phone: 608-723-6363
 4211 HWY 81 E, LANCASTER, WI 53813

JOB NO: 24S102 DRAWN BY: AJ AUSTIN
 H:\CRD\24S102 CREW CHIEF: SHANE AUSTIN
 H:\PLAT\T5NR1W\18\24S102-LOY CREW: O. AUSTIN, T. AUSTIN

SHEET 1 OF 1

SEP 13 2024 52064

NE 1/4 - NW 1/4

NW 1/4 - NE 1/4

ANNATAN

VILLAGE

BLOCK "A"

TRACT 1
 PREVIOUS SURVEY
 BY AARON AUSTIN
 REVISED: 4-26-2024

PREVIOUS SURVEY
 BY LARRY AUSTIN
 DATED 8-12-2002

S 00°19'40" E 100.32'

S 89°40'20" W 213.44'

N 89°40'22" E 214.09'

N 15°57'14" E 41.18'

N 00°12'44" E 59.23'

N 01°42'23" E 33.96'

N 83°05'01" E 124.56'

152.96'

[791539]

100.32'

2615.89'

CENTER 1/4 CORNER
 SECTION 18, T5N R1W
 3/4" Rebar found.
 New tie sheet.

S 00°41'58" E 890.93'

N 00°04'57" W 173.70'

S 00°41'58" E 322.08'

WEST LINE, LOT 15

LINE DESCRIBED IN [791539]

100.32'

2615.89'

CENTER 1/4 CORNER
 SECTION 18, T5N R1W
 3/4" Rebar found.
 New tie sheet.

S 00°41'58" E 890.93'

N 00°04'57" W 173.70'

S 00°41'58" E 322.08'

WEST LINE, LOT 15

LINE DESCRIBED IN [791539]

100.32'

2615.89'

CENTER 1/4 CORNER
 SECTION 18, T5N R1W
 3/4" Rebar found.
 New tie sheet.

S 00°41'58" E 890.93'

N 00°04'57" W 173.70'

S 00°41'58" E 322.08'

WEST LINE, LOT 15

LINE DESCRIBED IN [791539]

100.32'

2615.89'

CENTER 1/4 CORNER
 SECTION 18, T5N R1W
 3/4" Rebar found.
 New tie sheet.

S 00°41'58" E 890.93'

N 00°04'57" W 173.70'

S 00°41'58" E 322.08'

WEST LINE, LOT 15

LINE DESCRIBED IN [791539]

100.32'

2615.89'

CENTER 1/4 CORNER
 SECTION 18, T5N R1W
 3/4" Rebar found.
 New tie sheet.

S 00°41'58" E 890.93'

N 00°04'57" W 173.70'

S 00°41'58" E 322.08'

WEST LINE, LOT 15

LINE DESCRIBED IN [791539]

100.32'

2615.89'

CENTER 1/4 CORNER
 SECTION 18, T5N R1W
 3/4" Rebar found.
 New tie sheet.

S 00°41'58" E 890.93'

N 00°04'57" W 173.70'

S 00°41'58" E 322.08'

WEST LINE, LOT 15

LINE DESCRIBED IN [791539]

100.32'

2615.89'

CENTER 1/4 CORNER
 SECTION 18, T5N R1W
 3/4" Rebar found.
 New tie sheet.

S 00°41'58" E 890.93'

N 00°04'57" W 173.70'

S 00°41'58" E 322.08'

WEST LINE, LOT 15

LINE DESCRIBED IN [791539]

100.32'

2615.89'

CENTER 1/4 CORNER
 SECTION 18, T5N R1W
 3/4" Rebar found.
 New tie sheet.

S 00°41'58" E 890.93'

N 00°04'57" W 173.70'

S 00°41'58" E 322.08'

WEST LINE, LOT 15

LINE DESCRIBED IN [791539]

100.32'

2615.89'

CENTER 1/4 CORNER
 SECTION 18, T5N R1W
 3/4" Rebar found.
 New tie sheet.

S 00°41'58" E 890.93'

N 00°04'57" W 173.70'

S 00°41'58" E 322.08'

WEST LINE, LOT 15

LINE DESCRIBED IN [791539]

100.32'

2615.89'

CENTER 1/4 CORNER
 SECTION 18, T5N R1W
 3/4" Rebar found.
 New tie sheet.

S 00°41'58" E 890.93'

N 00°04'57" W 173.70'

S 00°41'58" E 322.08'

WEST LINE, LOT 15

LINE DESCRIBED IN [791539]

100.32'

2615.89'

CENTER 1/4 CORNER
 SECTION 18, T5N R1W
 3/4" Rebar found.
 New tie sheet.

S 00°41'58" E 890.93'

N 00°04'57" W 173.70'

S 00°41'58" E 322.08'

WEST LINE, LOT 15

LINE DESCRIBED IN [791539]

100.32'

2615.89'

CENTER 1/4 CORNER
 SECTION 18, T5N R1W
 3/4" Rebar found.
 New tie sheet.

S 00°41'58" E 890.93'

N 00°04'57" W 173.70'

S 00°41'58" E 322.08'

WEST LINE, LOT 15

LINE DESCRIBED IN [791539]

100.32'

2615.89'

CENTER 1/4 CORNER
 SECTION 18, T5N R1W
 3/4" Rebar found.
 New tie sheet.

S 00°41'58" E 890.93'

N 00°04'57" W 173.70'

S 00°41'58" E 322.08'

WEST LINE, LOT 15

LINE DESCRIBED IN [791539]

100.32'

2615.89'

CENTER 1/4 CORNER
 SECTION 18, T5N R1W
 3/4" Rebar found.
 New tie sheet.

S 00°41'58" E 890.93'

N 00°04'57" W 173.70'

S 00°41'58" E 322.08'

WEST LINE, LOT 15

LINE DESCRIBED IN [791539]

100.32'

2615.89'

CENTER 1/4 CORNER
 SECTION 18, T5N R1W
 3/4" Rebar found.
 New tie sheet.

S 00°41'58" E 890.93'

N 00°04'57" W 173.70'

S 00°41'58" E 322.08'

WEST LINE, LOT 15

LINE DESCRIBED IN [791539]

100.32'

2615.89'

CENTER 1/4 CORNER
 SECTION 18, T5N R1W
 3/4" Rebar found.
 New tie sheet.

S 00°41'58" E 890.93'

N 00°04'57" W 173.70'

S 00°41'58" E 322.08'

WEST LINE, LOT 15

LINE DESCRIBED IN [791539]

100.32'

2615.89'

CENTER 1/4 CORNER
 SECTION 18, T5N R1W
 3/4" Rebar found.
 New tie sheet.

S 00°41'58" E 890.93'

N 00°04'57" W 173.70'

S 00°41'58" E 322.08'

WEST LINE, LOT 15

LINE DESCRIBED IN [791539]

100.32'

2615.89'

CENTER 1/4 CORNER
 SECTION 18, T5N R1W
 3/4" Rebar found.
 New tie sheet.

S 00°41'58" E 890.93'

N 00°04'57" W 173.70'

S 00°41'58" E 322.08'

WEST LINE, LOT 15

LINE DESCRIBED IN [791539]

100.32'

2615.89'

CENTER 1/4 CORNER
 SECTION 18, T5N R1W
 3/4" Rebar found.
 New tie sheet.

S 00°41'58" E 890.93'

N 00°04'57" W 173.70'

S 00°41'58" E 322.08'

WEST LINE, LOT 15

LINE DESCRIBED IN [791539]

100.32'

2615.89'

CENTER 1/4 CORNER
 SECTION 18, T5N R1W
 3/4" Rebar found.
 New tie sheet.

S 00°41'58" E 890.93'

N 00°04'57" W 173.70'

S 00°41'58" E 322.08'

WEST LINE, LOT 15

LINE DESCRIBED IN [791539]

100.32'

2615.89'

CENTER 1/4 CORNER
 SECTION 18, T5N R1W
 3/4" Rebar found.
 New tie sheet.

S 00°41'58" E 890.93'

N 00°04'57" W 173.70'

S 00°41'58" E 322.08'

WEST LINE, LOT 15

LINE DESCRIBED IN [791539]

100.32'

2615.89'

CENTER 1/4 CORNER
 SECTION 18, T5N R1W
 3/4" Rebar found.
 New tie sheet.

S 00°41'58" E 890.93'

N 00°04'57" W 173.70'

S 00°41'58" E 322.08'