

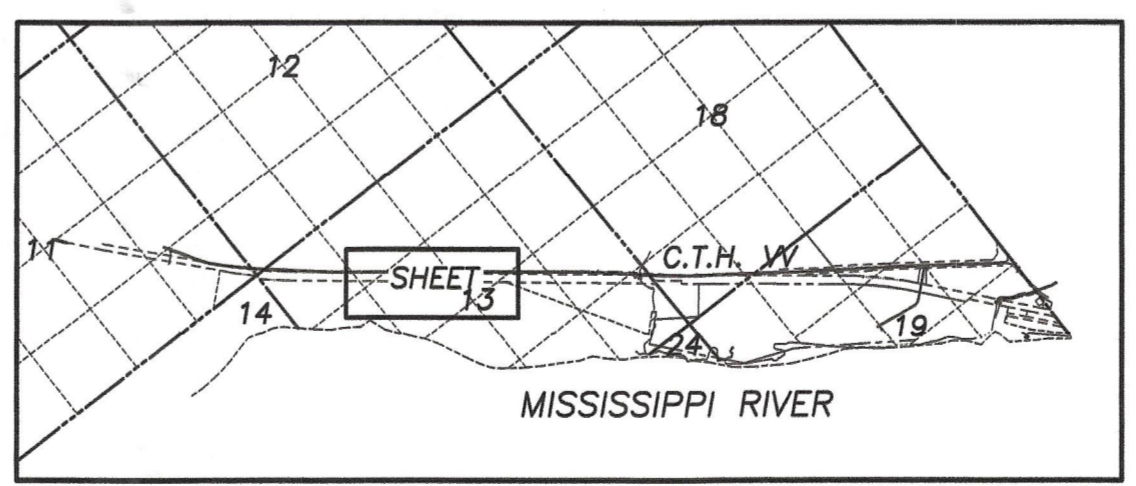
LEGEND

	SECTION CORNER, AS NOTED		PROPERTY LINE
	PROPERTY CORNER FOUND, AS NOTED		PLATTED LINE
	U.S. ARMY CORPS OF ENGINEERS		RIGHT-OF-WAY LINE
	CONCRETE MONUMENT FOUND		SECTION LINE
	3/4" REBAR SET		COAL PILE
	CONTROL MONUMENT		DITCH
	PVC PIPE		FENCE LINE
	MONITORING WELL		WATER LINE
	SPRINKLER HEADS		SANITARY SEWER
	BOLLARD		UNDERGROUND ELECTRICAL POWER
	STREET SIGN		OVERHEAD ELECTRICAL POWER
	WATER OR GAS VALVE		UNDERGROUND FIBER OPTIC
	FIRE HYDRANT		UNDERGROUND TELEPHONE
	UTILITY MANHOLE		UNDERGROUND CABLE
	BATTERY WELL		GAS MAIN
	STORM SEWER INLET		EDGE OF TREES
	UTILITY POLE WITH GUY WIRE		RAILROAD TRACKS
	STREET LIGHT POLE		EDGE OF WATER
	UTILITY PEDESTAL		EASEMENT LINE
	BUILDINGS		PAVEMENT EDGE
	DECIDUOUS TREE		GUARD RAIL
	RAILROAD SIGNAL LIGHT		EDGE OF GRAVEL
			ROAD + 10' ELEVATION
			ROCK FENCE
			RECORDED INFORMATION

- NOTES**
- FIELD WORK PERFORMED BY JENKINS SURVEY & DESIGN, INC. FROM JUNE 12 TO JULY 27, 2006.
 - BEARINGS FOR THIS SURVEY AND MAP ARE REFERENCED TO WISCONSIN STATE PLANE SOUTH ZONE, WISCONSIN COUNTY COORDINATE SYSTEM (WCCS), GRANT COUNTY.
 - SUBSURFACE UTILITIES AND FEATURES SHOWN ON THIS MAP HAVE BEEN APPROXIMATED BY LOCATING SURFICIAL FEATURES AND APPURTENANCES.
 - BEFORE EXCAVATION, APPROPRIATE UTILITY COMPANIES SHOULD BE CONTACTED. FOR EXACT LOCATION OF UNDERGROUND UTILITIES, CONTACT DIGGERS' HOTLINE, AT 1.800.242.8511.
 - FOUND U.S. ARMY CORPS OF ENGINEERS MONUMENTS ARE FROM A SURVEY BY THE U.S. ARMY CORPS OF ENGINEERS IN 1942 FOR THE MISSISSIPPI RIVER LOCK AND DAM NO. 11 LAND ACQUISITION, GRANT COUNTY, WISCONSIN (9), SHEET NO. 2 AND 3.
 - RAILROAD RIGHT OF WAY WAS REESTABLISHED USING INFORMATION AND MONUMENTS FROM THE U.S. ARMY CORPS OF ENGINEERS SURVEY.
 - WR&L PARCEL IN ZONES AE AND X ON FIRM MAP, COMMUNITY-PANEL NUMBER 555548 0001 B, MAP REVISED: AUGUST 4, 1988.
 - ZONE X-AREAS DETERMINED TO BE OUTSIDE 500-YEAR FLOOD PLAIN.
 - ZONE AE-BASE FLOOD ELEVATIONS DETERMINED.
 - REFER TO SHEET 6 OF 6 FOR LEGAL DESCRIPTION.

CONTROL POINTS

CONTROL POINT	NORTHING	EASTING	DESCRIPTION
CM-1	485,267.338	731,441.373	N.W. CORNER OF SECTION 13-3-6
CM-2	485,247.039	731,441.492	USACE 264-1
CM-3	482,495.686	734,793.835	USACE 263-9
CM-4	480,245.735	736,188.612	USACE 263-9
CM-5	479,958.149	739,862.489	N.W. CORNER OF SECTION 19-3-5
CM-6	477,297.904	739,776.398	USACE 263-1
CM-7	477,302.430	741,958.323	EAST 1/4 CORNER OF SECTION 19-3-5



TO OBTAIN LOCATIONS OF PARTICIPANT UNDERGROUND FACILITIES BEFORE YOU DIG IN WISCONSIN

CALL DIGGERS' HOTLINE
1-800-242-8511 TOLL FREE

THE INFORMATION SHOWN ON THIS DRAWING CONCERNING THE TYPE AND LOCATION OF UNDERGROUND UTILITIES IS NOT GUARANTEED TO BE ACCURATE OR ALL INCLUSIVE. THE CONTRACTOR IS RESPONSIBLE FOR MAKING THE CONTRACTOR'S OWN DETERMINATIONS AS TO THE TYPE AND LOCATION OF UNDERGROUND UTILITIES AS MAY BE NECESSARY TO AVOID DAMAGE THEREOF.

SCALE: 1" = 100'

DATE	DESCRIPTION
08-04-2006	
08-17-2006	
08-17-2006	

DRAWN BY: JK
CHECKED BY: SO
APPROVED BY: DMU
DWGNAME: J:\2006\062350\dwg\062350-ALTA1.dwg

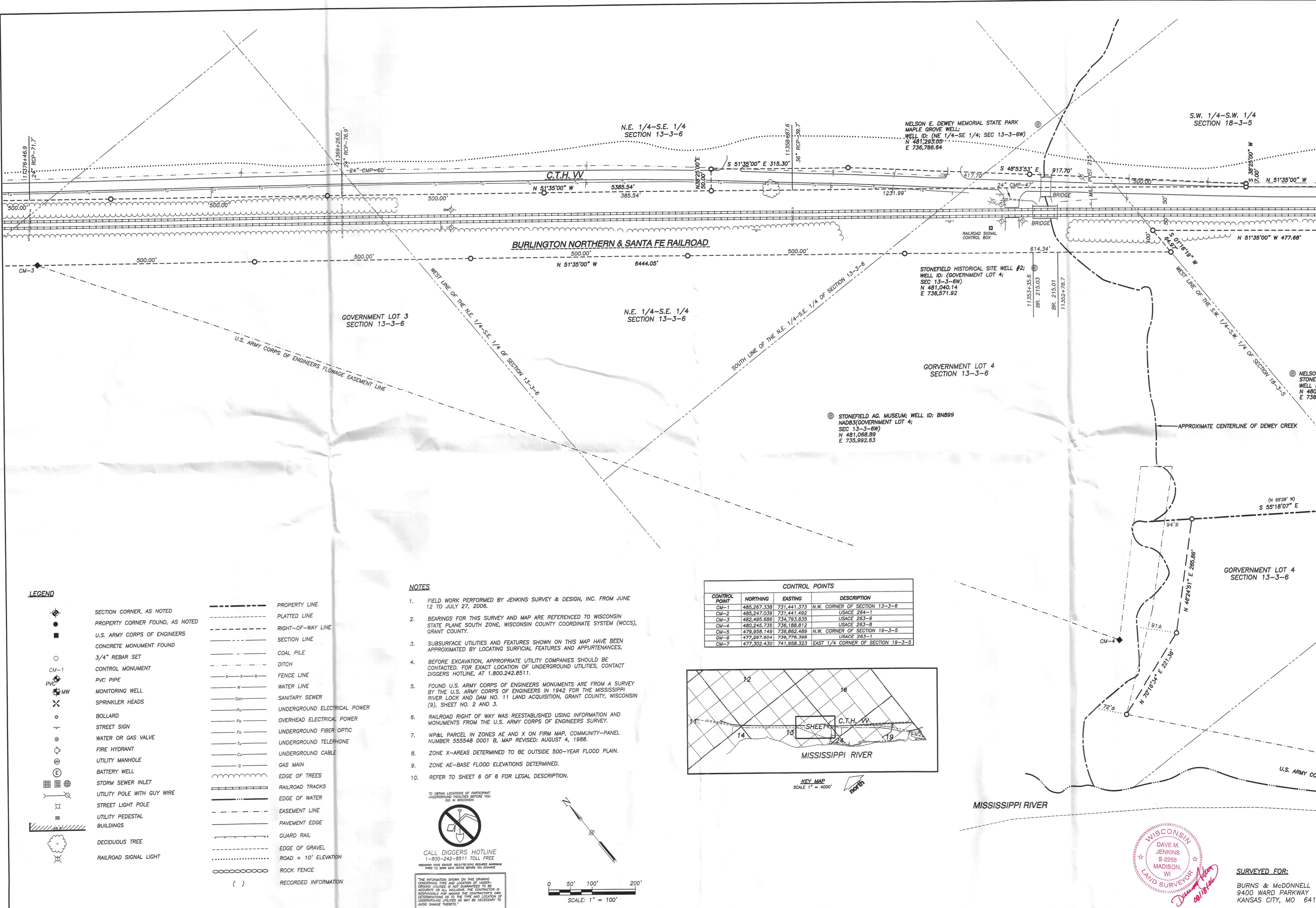
PLAT OF SURVEY

PARTS OF THE S.E. 1/4 OF SECTION 11, PART OF THE S.W. 1/4 OF SECTION 12, PART OF SECTION 13, AND PART OF SECTION 14, TOWNSHIP 6 NORTH, RANGE 6 WEST, GRANT COUNTY, WISCONSIN, AND PART OF THE S.W. 1/4 OF SECTION 18 AND PART OF SECTION 19, TOWNSHIP 6 NORTH, RANGE 6 WEST, TOWN OF CASSVILLE, GRANT COUNTY, WISCONSIN.

JSD - Engineers & Surveyors
Jenkins Survey & Design, Inc.
161 HORIZON DRIVE, SUITE 101
VERONA, WISCONSIN 53593
PHONE: (608)848-5060

PROJECT NO: 06-2350
FILE NO: C-115
SURVEYED BY: JK/DB/TG
F.B. NO/PG: 194/1
SHEET NO: 2 OF 6

SURVEYED FOR:
BURNS & McDONNELL
9400 WARD PARKWAY
KANSAS CITY, MO 64114



LEGEND

- | | | | |
|--|--|--|------------------------------|
| | SECTION CORNER, AS NOTED | | PROPERTY LINE |
| | PROPERTY CORNER FOUND, AS NOTED | | PLATTED LINE |
| | U.S. ARMY CORPS OF ENGINEERS CONCRETE MONUMENT FOUND | | RIGHT-OF-WAY LINE |
| | 3/4" REBAR SET | | SECTION LINE |
| | CONTROL MONUMENT | | COAL PILE |
| | PVC PIPE | | DITCH |
| | MONITORING WELL | | FENCE LINE |
| | SPRINKLER HEADS | | WATER LINE |
| | BOLLARD | | SANITARY SEWER |
| | STREET SIGN | | UNDERGROUND ELECTRICAL POWER |
| | WATER OR GAS VALVE | | UNDERGROUND FIBER OPTIC |
| | FIRE HYDRANT | | UNDERGROUND TELEPHONE |
| | UTILITY MANHOLE | | UNDERGROUND CABLE |
| | BATTERY WELL | | GAS MAIN |
| | STORM SEWER INLET | | EDGE OF TREES |
| | UTILITY POLE WITH GUY WIRE | | RAILROAD TRACKS |
| | STREET LIGHT POLE | | EDGE OF WATER |
| | UTILITY PEDESTAL | | EASEMENT LINE |
| | BUILDINGS | | PAVEMENT EDGE |
| | DECIDUOUS TREE | | GUARD RAIL |
| | RAILROAD SIGNAL LIGHT | | EDGE OF GRAVEL |
| | | | ROAD + 10' ELEVATION |
| | | | ROCK FENCE |
| | | | RECORDED INFORMATION |

NOTES

- FIELD WORK PERFORMED BY JENKINS SURVEY & DESIGN, INC. FROM JUNE 12 TO JULY 27, 2006.
- BEARINGS FOR THIS SURVEY AND MAP ARE REFERENCED TO WISCONSIN STATE PLANE SOUTH ZONE, WISCONSIN COUNTY COORDINATE SYSTEM (WCCS), GRANT COUNTY.
- SUBSURFACE UTILITIES AND FEATURES SHOWN ON THIS MAP HAVE BEEN APPROXIMATED BY LOCATING SURFICIAL FEATURES AND APPURTENANCES.
- BEFORE EXCAVATION, APPROPRIATE UTILITY COMPANIES SHOULD BE CONTACTED, FOR EXACT LOCATION OF UNDERGROUND UTILITIES, CONTACT DIGGERS HOTLINE, AT 1.800.242.8511.
- FOUND U.S. ARMY CORPS OF ENGINEERS MONUMENTS ARE FROM A SURVEY BY THE U.S. ARMY CORPS OF ENGINEERS IN 1942 FOR THE MISSISSIPPI RIVER LOCK AND DAM NO. 11 LAND ACQUISITION, GRANT COUNTY, WISCONSIN (9), SHEET NO. 2 AND 3.
- RAILROAD RIGHT OF WAY WAS REESTABLISHED USING INFORMATION AND MONUMENTS FROM THE U.S. ARMY CORPS OF ENGINEERS SURVEY.
- WP&L PARCEL IN ZONES AE AND X ON FIRM MAP, COMMUNITY-PANEL NUMBER 555548 0001 B, MAP REVISED: AUGUST 4, 1988.
- ZONE X-AREAS DETERMINED TO BE OUTSIDE 500-YEAR FLOOD PLAIN.
- ZONE AE-BASE FLOOD ELEVATIONS DETERMINED.
- REFER TO SHEET 6 OF 6 FOR LEGAL DESCRIPTION.

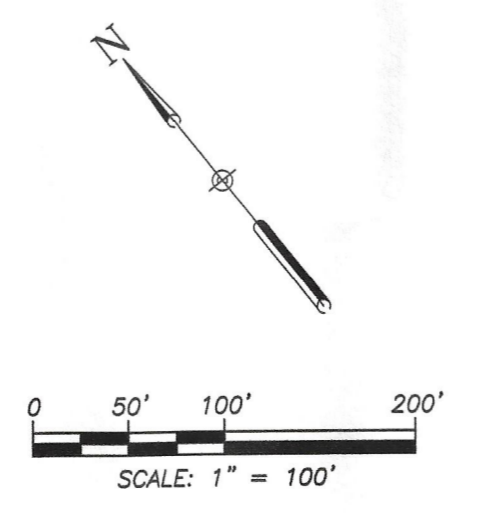
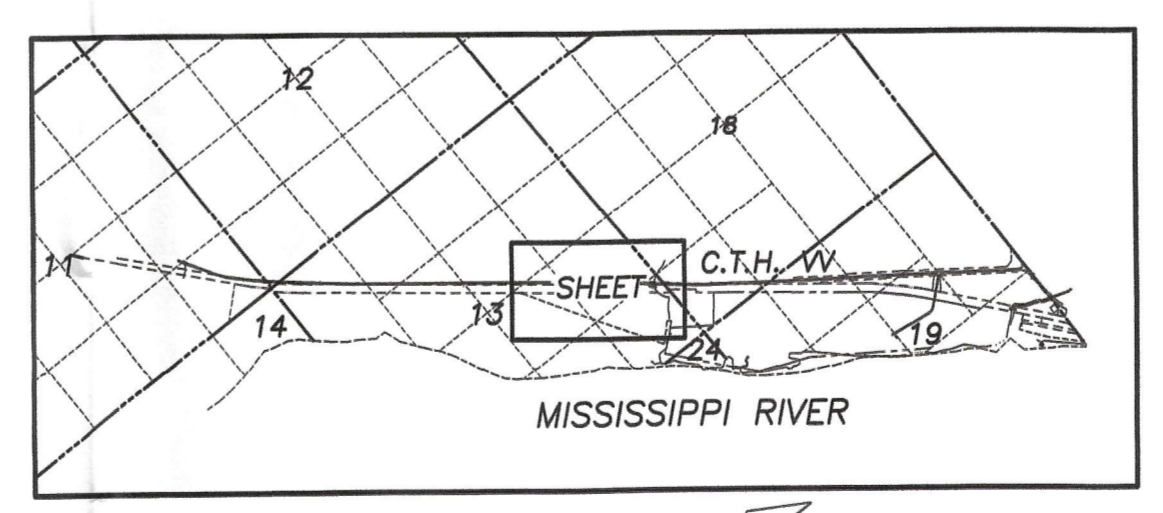
TO OBTAIN LOCATIONS OF PARTICIPANT UNDERGROUND FACILITIES BEFORE YOU DIG IN WISCONSIN

CALL DIGGERS HOTLINE
1-800-242-8511 TOLL FREE

WISCONSIN STATE STATUTE REG. 10.01(12) REQUIRES MINIMUM THREE (3) WORK DAYS NOTICE BEFORE YOU EXCAVATE

THE INFORMATION SHOWN ON THIS DRAWING CONCERNING TYPE AND LOCATION OF UNDERGROUND UTILITIES IS NOT GUARANTEED TO BE ACCURATE OR ALL INCLUSIVE. THE CONTRACTOR IS RESPONSIBLE FOR MAKING THE CONTRACTOR'S OWN DETERMINATIONS AS TO THE TYPE AND LOCATION OF UNDERGROUND UTILITIES AS MAY BE NECESSARY TO AVOID DAMAGE THEREOF.

CONTROL POINTS			
CONTROL POINT	NORTHING	EASTING	DESCRIPTION
CM-1	485,267.338	731,441.373	N.W. CORNER OF SECTION 13-3-6
CM-2	485,247.039	731,441.492	USACE 264-1
CM-3	482,495.686	734,793.835	USACE 263-9
CM-4	480,245.735	736,188.812	USACE 263-8
CM-5	479,958.149	736,862.489	N.W. CORNER OF SECTION 19-3-5
CM-6	477,297.904	739,776.308	USACE 263-1
CM-7	477,302.430	741,958.323	EAST 1/4 CORNER OF SECTION 19-3-5



PLAT OF SURVEY

DATE: 08-04-2006
DRAWN BY: JK

DATE: 08-17-2006
CHECKED BY: SO

DATE: 08-17-2006
APPROVED BY: DMJ

OWNER: J:\2006\062350.dwg
DWGNAME: 062350-ALTA1.dwg

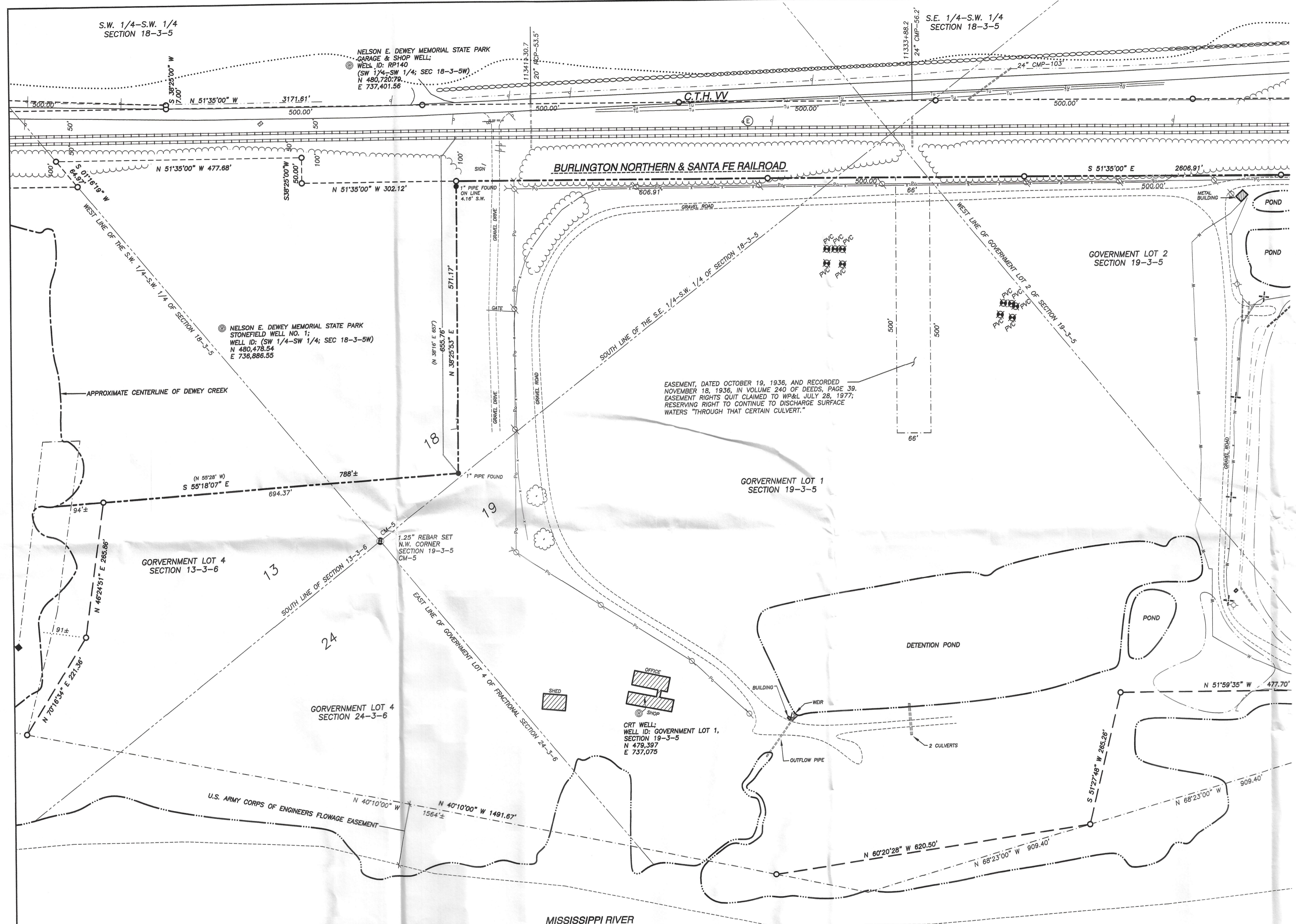
REVISION NO. DESCRIPTION DATE BY

PROJECT NO: 06-2350
FILE NO: C-115
SURVEYED BY: JK/DB/TG
F.B. NO/PG: 194/1
SHEET NO: 3 OF 6

WISCONSIN LAND SURVEYOR
DAVE M. JENKINS
S-2255
MADISON, WI
161 HORIZON DRIVE, SUITE 101
VERONA, WISCONSIN 53593
PHONE: (608)948-5060

JSD - Engineers & Surveyors
Jenkins Survey & Design, Inc.

SURVEYED FOR:
BURNS & McDONNELL
9400 WARD PARKWAY
KANSAS CITY, MO 64114



LEGEND

- SECTION CORNER, AS NOTED
- PROPERTY CORNER FOUND, AS NOTED
- U.S. ARMY CORPS OF ENGINEERS CONCRETE MONUMENT FOUND
- 3/4" REBAR SET
- CM-1 CONTROL MONUMENT
- PVC PIPE
- ⊗ MW MONITORING WELL
- ⊗ SPRINKLER HEADS
- BOLLARD
- ⊕ STREET SIGN
- WATER OR GAS VALVE
- FIRE HYDRANT
- UTILITY MANHOLE
- ⊕ BATTERY WELL
- ⊕ STORM SEWER INLET
- ⊕ UTILITY POLE WITH GUY WIRE
- ⊕ STREET LIGHT POLE
- ⊕ UTILITY PEDESTAL BUILDINGS
- DECIDUOUS TREE
- RAILROAD SIGNAL LIGHT
- PROPERTY LINE
- PLATTED LINE
- RIGHT-OF-WAY LINE
- SECTION LINE
- COAL PILE
- DITCH
- FENCE LINE
- WATER LINE
- SANITARY SEWER
- UNDERGROUND ELECTRICAL POWER
- OVERHEAD ELECTRICAL POWER
- UNDERGROUND FIBER OPTIC
- UNDERGROUND TELEPHONE
- UNDERGROUND CABLE
- GAS MAIN
- EDGE OF TREES
- RAILROAD TRACKS
- EDGE OF WATER
- EASEMENT LINE
- PAVEMENT EDGE
- GUARD RAIL
- EDGE OF GRAVEL
- ROAD + 10' ELEVATION
- ROCK FENCE
- () RECORDED INFORMATION

- NOTES**
- FIELD WORK PERFORMED BY JENKINS SURVEY & DESIGN, INC. FROM JUNE 12 TO JULY 27, 2006.
 - BEARINGS FOR THIS SURVEY AND MAP ARE REFERENCED TO WISCONSIN STATE PLANE SOUTH ZONE, WISCONSIN COUNTY COORDINATE SYSTEM (WCOS), GRANT COUNTY.
 - SUBSURFACE UTILITIES AND FEATURES SHOWN ON THIS MAP HAVE BEEN APPROXIMATED BY LOCATING SURFICIAL FEATURES AND APPURTENANCES.
 - BEFORE EXCAVATION, APPROPRIATE UTILITY COMPANIES SHOULD BE CONTACTED, FOR EXACT LOCATION OF UNDERGROUND UTILITIES, CONTACT DIGGERS HOTLINE, AT 1.800.242.8511.
 - FOUND U.S. ARMY CORPS OF ENGINEERS MONUMENTS ARE FROM A SURVEY BY THE U.S. ARMY CORPS OF ENGINEERS IN 1942 FOR THE MISSISSIPPI RIVER LOCK AND DAM NO. 11 LAND ACQUISITION, GRANT COUNTY, WISCONSIN (9), SHEET NO. 2 AND 3.
 - RAILROAD RIGHT OF WAY WAS REESTABLISHED USING INFORMATION AND MONUMENTS FROM THE U.S. ARMY CORPS OF ENGINEERS SURVEY.
 - WP&L PARCEL IN ZONES AE AND X ON FIRM MAP, COMMUNITY-PANEL NUMBER 555548 0001 B, MAP REVISED: AUGUST 4, 1988.
 - ZONE X-AREAS DETERMINED TO BE OUTSIDE 500-YEAR FLOOD PLAN.
 - ZONE AE-BASE FLOOD ELEVATIONS DETERMINED.
 - REFER TO SHEET 6 OF 6 FOR LEGAL DESCRIPTION.

CONTROL POINTS			
CONTROL POINT	NORTHING	EASTING	DESCRIPTION
CM-1	485,267.338	731,441.373	N.W. CORNER OF SECTION 13-3-6
CM-2	485,247.039	731,441.492	USACE 264-1
CM-3	482,495.686	734,793.835	USACE 263-8
CM-4	480,245.735	736,188.812	USACE 263-8
CM-5	479,958.149	736,862.489	N.W. CORNER OF SECTION 19-3-5
CM-6	477,297.904	739,776.398	USACE 263-1
CM-7	477,302.430	741,858.323	EAST 1/4 CORNER OF SECTION 19-3-5

SURVEYED FOR:
 BURNS & McDONNELL
 9400 WARD PARKWAY
 KANSAS CITY, MO 64114

PLAT OF SURVEY

DATE: 08-04-2006
 DRAWN BY: JK
 CHECKED BY: SO
 APPROVED BY: DMU
 DWGNAME: J:\2006\062350.dwg\062350-ALTA1.dwg

REVISION NO. | DESCRIPTION | DATE | BY

PROJECT NO: 06-2350
 FILE NO: C-115
 SURVEYED: JK/DB/TG
 F.B. NO/PG: 194/1
 SHEET NO: 4 OF 6

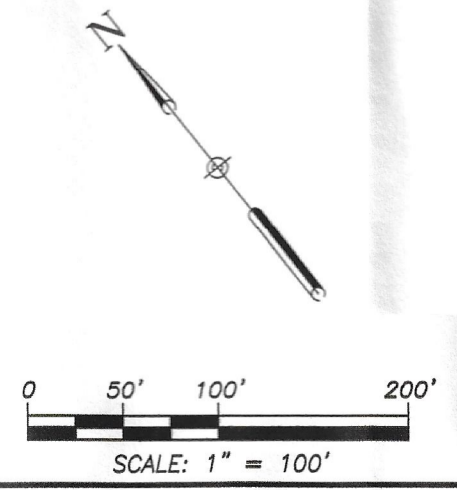
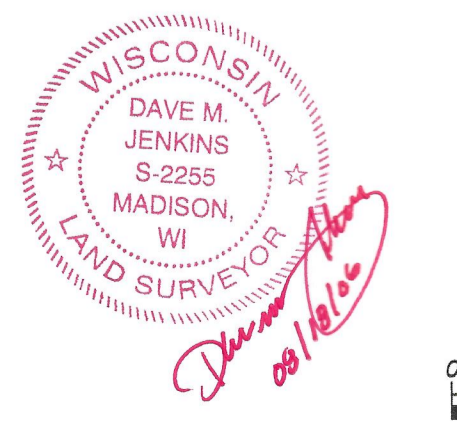
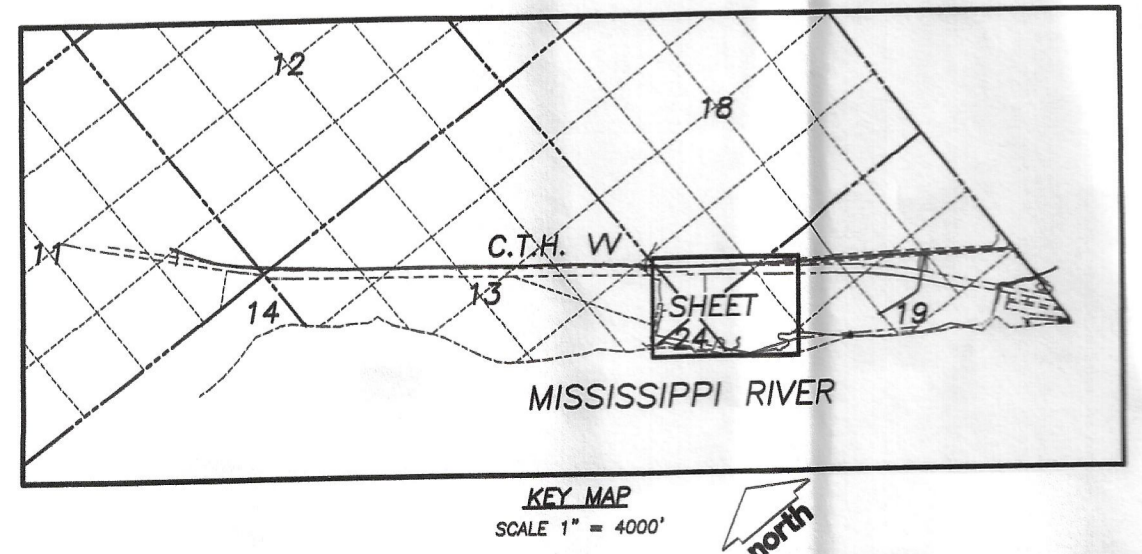
JSD - Engineers • Surveyors
Jenkins Survey & Design, Inc.
 161 HORIZON DRIVE, SUITE 101
 MADISON, WISCONSIN 53703
 PHONE: (608)846-5060

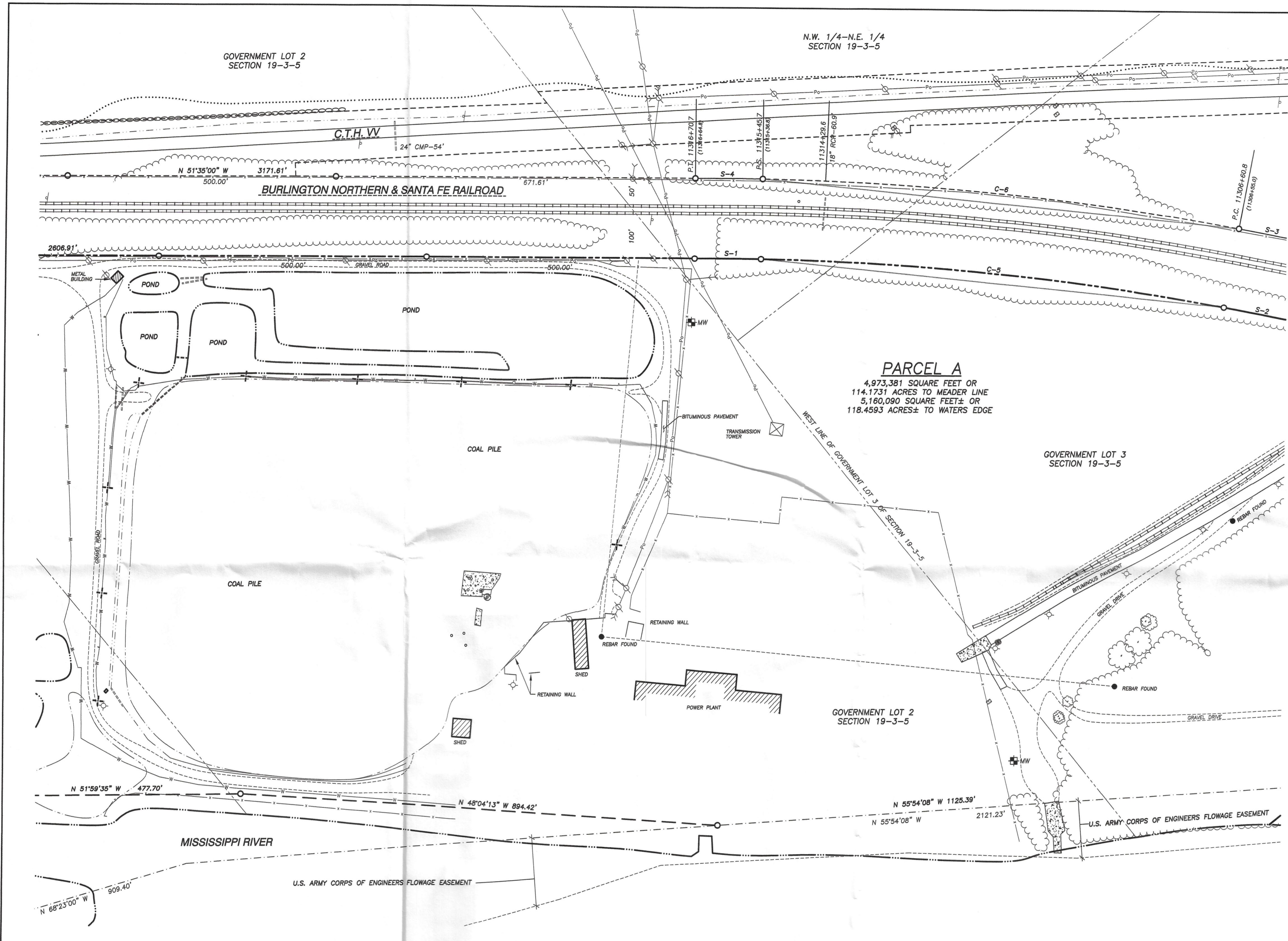
TO OBTAIN LOCATIONS OF PARTICIPANT UNDERGROUND UTILITIES BEFORE YOU DIG IN WISCONSIN

CALL DIGGERS HOTLINE
 1-800-242-8511 TOLL FREE

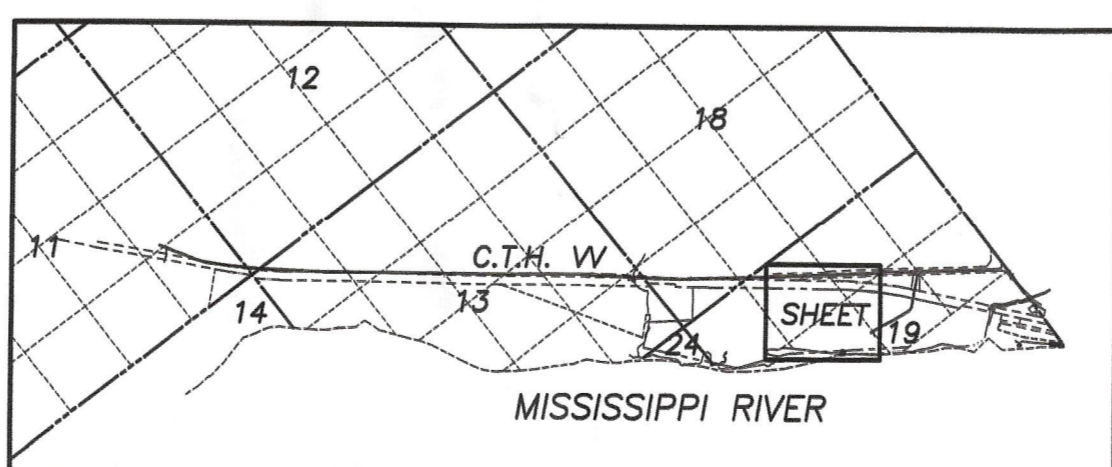
WISCONSIN STATE STATUTE (REG. 21.01(1)(b)) REQUIRES MINIMUM THREE (3) WORK DAYS NOTICE BEFORE YOU EXCAVATE

THE INFORMATION SHOWN ON THIS DRAWING CONCERNING TYPE AND LOCATION OF UNDERGROUND UTILITIES IS NOT GUARANTEED TO BE ACCURATE OR COMPLETE. THE CONTRACTOR IS RESPONSIBLE FOR MAKING THE CONTRACTOR'S OWN DETERMINATIONS AS TO THE TYPE AND LOCATION OF UNDERGROUND UTILITIES AS MAY BE NECESSARY TO AVOID DAMAGE THEREOF.





PARCEL A
 4,973,381 SQUARE FEET OR
 114.1731 ACRES TO MEADER LINE
 5,160,090 SQUARE FEET± OR
 118.4593 ACRES± TO WATERS EDGE



LEGEND

- SECTION CORNER, AS NOTED
- PROPERTY CORNER FOUND, AS NOTED
- U.S. ARMY CORPS OF ENGINEERS CONCRETE MONUMENT FOUND
- 3/4" REBAR SET
- CM-1 CONTROL MONUMENT
- PVC PIPE
- ⊕ MW MONITORING WELL
- ⊗ SPRINKLER HEADS
- BOLLARD
- ⊕ STREET SIGN
- ⊕ WATER OR GAS VALVE
- ⊕ FIRE HYDRANT
- ⊕ UTILITY MANHOLE
- ⊕ BATTERY WELL
- ⊕ STORM SEWER INLET
- ⊕ UTILITY POLE WITH GUY WIRE
- ⊕ STREET LIGHT POLE
- ⊕ UTILITY PEDESTAL
- ⊕ BUILDINGS
- DECIDUOUS TREE
- ⊕ RAILROAD SIGNAL LIGHT
- PROPERTY LINE
- - - PLATTED LINE
- - - RIGHT-OF-WAY LINE
- - - SECTION LINE
- - - COAL PILE
- - - DITCH
- - - FENCE LINE
- - - WATER LINE
- - - SANITARY SEWER
- - - UNDERGROUND ELECTRICAL POWER
- - - OVERHEAD ELECTRICAL POWER
- - - UNDERGROUND FIBER OPTIC
- - - UNDERGROUND TELEPHONE
- - - UNDERGROUND CABLE
- - - GAS MAIN
- - - EDGE OF TREES
- - - RAILROAD TRACKS
- - - EDGE OF WATER
- - - EASEMENT LINE
- - - PAVEMENT EDGE
- - - GUARD RAIL
- - - EDGE OF GRAVEL
- - - ROAD + 10' ELEVATION
- - - ROCK FENCE
- () RECORDED INFORMATION

NOTES

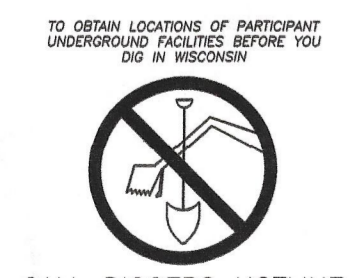
1. FIELD WORK PERFORMED BY JENKINS SURVEY & DESIGN, INC. FROM JUNE 12 TO JULY 27, 2006.
2. BEARINGS FOR THIS SURVEY AND MAP ARE REFERENCED TO WISCONSIN STATE PLANE SOUTH ZONE, WISCONSIN COUNTY COORDINATE SYSTEM (WCCS), GRANT COUNTY.
3. SUBSURFACE UTILITIES AND FEATURES SHOWN ON THIS MAP HAVE BEEN APPROXIMATED BY LOCATING SURFICIAL FEATURES AND APPURTENANCES.
4. BEFORE EXCAVATION, APPROPRIATE UTILITY COMPANIES SHOULD BE CONTACTED FOR EXACT LOCATION OF UNDERGROUND UTILITIES, CONTACT DIGGERS HOTLINE, AT 1.800.242.8511.
5. FOUND U.S. ARMY CORPS OF ENGINEERS MONUMENTS ARE FROM A SURVEY BY THE U.S. ARMY CORPS OF ENGINEERS IN 1942 FOR THE MISSISSIPPI RIVER LOCK AND DAM NO. 11 LAND ACQUISITION, GRANT COUNTY, WISCONSIN (9), SHEET NO. 2 AND 3.
6. RAILROAD RIGHT OF WAY WAS REESTABLISHED USING INFORMATION AND MONUMENTS FROM THE U.S. ARMY CORPS OF ENGINEERS SURVEY.
7. WP&L PARCEL IN ZONES AE AND X ON FIRM MAP, COMMUNITY-PANEL NUMBER 555548 0001 B, MAP REVISED: AUGUST 4, 1988.
8. ZONE X-AREAS DETERMINED TO BE OUTSIDE 500-YEAR FLOOD PLAIN.
9. ZONE AE-BASE FLOOD ELEVATIONS DETERMINED.
10. REFER TO SHEET 6 OF 6 FOR LEGAL DESCRIPTION.

CURVE TABLE

CURVE	LENGTH	RADIUS	DELTA	TANGENT	CHORD	CHORD BEARING
C-5	868.20'	5175.00'	09°36'45"	435.12'	867.18'	S 46°08'55" E
C-6	893.36'	5325.00'	09°36'45"	447.73'	892.31'	N 36°05'55" W
S-1	125.00'	5275.00'	00°40'44"	123.81'	123.81'	S 51°21'31" E
S-2	125.00'	5275.00'	00°40'44"	123.81'	123.81'	S 40°50'20" E
S-3	125.00'	5275.00'	00°40'44"	125.59'	125.59'	N 40°50'26" W
S-4	125.00'	5275.00'	00°40'44"	125.59'	125.59'	N 51°21'25" W

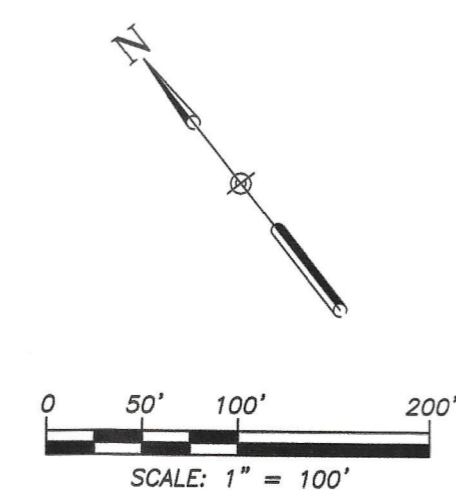
CONTROL POINTS

CONTROL POINT	NORTHING	EASTING	DESCRIPTION
CM-1	485,267.338	731,441.373	N.W. CORNER OF SECTION 13-3-8
CM-2	485,247.039	731,441.492	USACE 264-1
CM-3	482,495.696	734,793.835	USACE 263-9
CM-4	480,245.735	736,188.812	USACE 263-8
CM-5	479,959.149	736,862.489	N.W. CORNER OF SECTION 19-3-5
CM-6	477,297.904	739,778.398	USACE 263-1
CM-7	477,302.430	741,958.323	EAST 1/4 CORNER OF SECTION 19-3-5



CALL DIGGERS HOTLINE
 1-800-242-8511 TOLL FREE
 WISCONSIN STATE PLANE SOUTH ZONE, WISCONSIN COUNTY COORDINATE SYSTEM (WCCS), GRANT COUNTY.

THE INFORMATION SHOWN ON THIS DRAWING CONCERNING TYPE AND LOCATION OF UNDERGROUND UTILITIES IS NOT GUARANTEED TO BE ACCURATE. ALL INFORMATION IS THE PROPERTY OF JENKINS SURVEY & DESIGN, INC. AND IS NOT TO BE REPRODUCED OR TRANSMITTED IN ANY FORM OR BY ANY MEANS, ELECTRONIC OR MECHANICAL, INCLUDING PHOTOCOPYING, RECORDING, OR BY ANY INFORMATION STORAGE AND RETRIEVAL SYSTEM, WITHOUT PERMISSION IN WRITING FROM JENKINS SURVEY & DESIGN, INC.



DATE	DESCRIPTION	BY
08-04-2006		
08-17-2006		
08-17-2006		

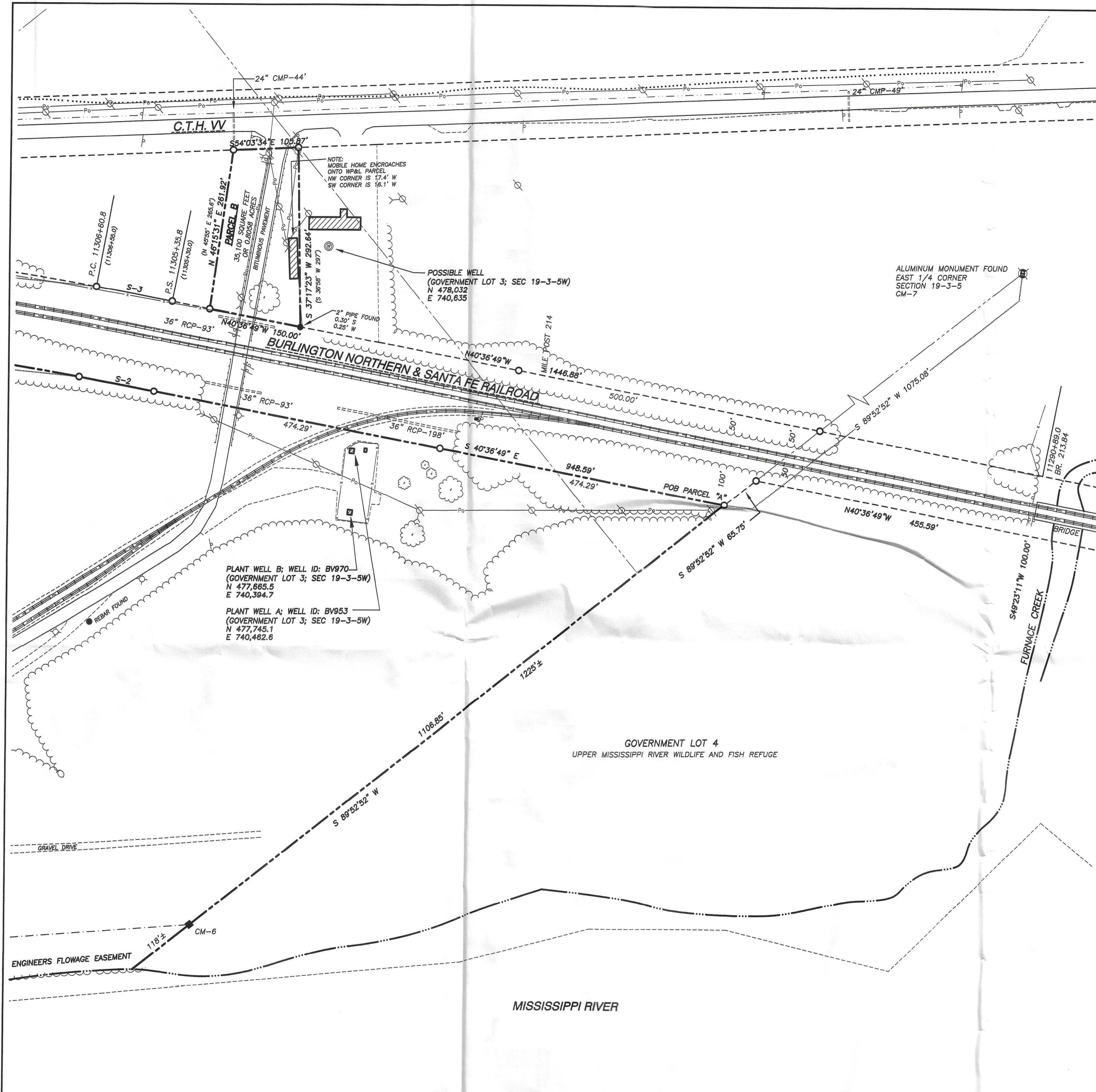
PLAT OF SURVEY

PARTS OF THE S.E. 1/4 OF SECTION 11, PART OF THE S.W. 1/4 OF SECTION 12, PART OF GOVERNMENT LOTS 1, 2, AND 3, PART OF THE N.E. 1/4 OF THE N.W. 1/4, PART OF THE S.E. 1/4, PART OF THE S.W. 1/4, PART OF THE N.E. 1/4, PART OF THE N.W. 1/4, PART OF THE S.E. 1/4, AND PART OF GOVERNMENT LOT 2 OF SECTION 14, ALL IN TOWN 3 NORTH, RANGE 6 WEST, AND PART OF THE S.E. 1/4 OF THE S.W. 1/4 OF THE S.W. 1/4 OF SECTION 18 AND PART OF GOVERNMENT LOTS 1, 2, AND 3 AND PART OF THE N.W. 1/4 OF SECTION 19, ALL IN TOWN 3 NORTH, RANGE 6 WEST, TOWN OF GASSVILLE, GRANT COUNTY, WISCONSIN.

JSD - Engineers - Surveyors
Jenkins Survey & Design, Inc.
 161 HORIZON DRIVE SUITE 101
 VERONA, WISCONSIN 53593
 PHONE: (608)848-5060

PROJECT NO: 06-2350
 FILE NO: C-115
 SURVEYED BY: JK/DB/TG
 F.B. NO/PG: 194/1
 SHEET NO: 5 OF 6

SURVEYED FOR:
 BURNS & McDONNELL
 9400 WARD PARKWAY
 KANSAS CITY, MO 64114



LEGEND

- SECTION CORNER, AS NOTED
- PROPERTY CORNER FOUND, AS NOTED
- U.S. ARMY CORPS OF ENGINEERS
- CONCRETE MONUMENT FOUND
- 3/4" REBAR SET
- CONTROL MONUMENT
- PVC PIPE
- MONITORING WELL
- SPRINKLER HEADS
- BOLLARD
- STREET SIGN
- WATER OR GAS VALVE
- FIRE HYDRANT
- UTILITY MANHOLE
- BATTERY WELL
- STORM SEWER INLET
- UTILITY POLE WITH GUY WIRE
- STREET LIGHT POLE
- UTILITY PEDESTAL
- BUILDINGS
- DECIDUOUS TREE
- RAILROAD SIGNAL LIGHT
- PROPERTY LINE
- PLATTED LINE
- RIGHT-OF-WAY LINE
- SECTION LINE
- COAL PILE
- DITCH
- FENCE LINE
- WATER LINE
- SANITARY SEWER
- UNDERGROUND ELECTRICAL POWER
- OVERHEAD ELECTRICAL POWER
- UNDERGROUND FIBER OPTIC
- UNDERGROUND TELEPHONE
- UNDERGROUND CABLE
- GAS MAIN
- EDGE OF TREES
- RAILROAD TRACKS
- EASEMENT LINE
- PAVEMENT EDGE
- GUARD RAIL
- EDGE OF GRAVEL
- ROAD + 10' ELEVATION
- ROCK FENCE
- RECORDED INFORMATION

NOTES

1. FIELD WORK PERFORMED BY JENKINS SURVEY & DESIGN, INC. FROM JUNE 12 TO JULY 27, 2006.
2. BEARINGS FOR THIS SURVEY AND MAP ARE REFERENCED TO WISCONSIN STATE PLANE SOUTH ZONE, WISCONSIN COUNTY COORDINATE SYSTEM (WCCS), GRANT COUNTY.
3. SUBSURFACE UTILITIES AND FEATURES SHOWN ON THIS MAP HAVE BEEN APPROXIMATED BY LOCATING SURFICIAL FEATURES AND APPURTENANCES.
4. BEFORE EXCAVATION, APPROPRIATE UTILITY COMPANIES SHOULD BE CONTACTED FOR EXACT LOCATION OF UNDERGROUND UTILITIES, CONTACT DIGGERS HOTLINE, AT 1.800.242.8511.
5. FOUND U.S. ARMY CORPS OF ENGINEERS MONUMENTS ARE FROM A SURVEY BY THE U.S. ARMY CORPS OF ENGINEERS IN 1942 FOR THE MISSISSIPPI RIVER LOCK AND DAM NO. 11 LAND ACQUISITION, GRANT COUNTY, WISCONSIN (9), SHEET NO. 2 AND 3.
6. RAILROAD RIGHT OF WAY WAS REESTABLISHED USING INFORMATION AND MONUMENTS FROM THE U.S. ARMY CORPS OF ENGINEERS SURVEY.
7. WP&L PARCEL IN ZONES AE AND X ON FIRM MAP, COMMUNITY-PANEL NUMBER 555548 0001 B, MAP REVISED: AUGUST 4, 1988.
8. ZONE X-AREAS DETERMINED TO BE OUTSIDE 500-YEAR FLOOD PLAIN.
9. ZONE AE-BASE FLOOD ELEVATIONS DETERMINED.

LEGAL DESCRIPTION (FURNISHED)

THAT PART OF GOVERNMENT LOT FOUR (4) OF SECTION THIRTEEN (13), TOWN THREE (3) NORTH, RANGE SIX (6) WEST OF THE 4th P.M., GRANT COUNTY, WISCONSIN, LYING EAST OF NELSON DEWEY CREEK AND SOUTH OF THE CHICAGO, BURLINGTON & QUINCY RAILROAD COMPANY RIGHT-OF-WAY;

ALSO THAT PART OF THE FRACTIONAL SECTION TWENTY-FOUR (24), TOWN AND RANGE AFORESAID, LYING NORTH OF THE CASSVILLE SLOUGH;

ALSO THAT PART OF THE SOUTHWEST ONE QUARTER (S.W. 1/4) OF SECTION EIGHTEEN (18), TOWN THREE (3) NORTH, RANGE FIVE (5) WEST OF THE 4th P.M., GRANT COUNTY, WISCONSIN, LYING SOUTH OF THE CHICAGO, BURLINGTON & QUINCY RAILROAD COMPANY RIGHT-OF-WAY;

ALSO THAT PART OF GOVERNMENT LOT ONE (1) AND GOVERNMENT LOT TWO (2) OF SECTION NINETEEN (19), TOWN THREE (3) NORTH, RANGE FIVE (5) WEST OF THE 4th P.M., GRANT COUNTY, WISCONSIN, LYING SOUTH OF THE CHICAGO, BURLINGTON & QUINCY RAILROAD COMPANY RIGHT-OF-WAY;

ALSO THAT PART OF THE NORTHEAST ONE QUARTER (N.E. 1/4) OF SECTION NINETEEN (19), TOWN THREE (3) NORTH, RANGE FIVE (5) WEST OF THE 4th P.M., GRANT COUNTY, WISCONSIN, LYING SOUTH OF THE CHICAGO, BURLINGTON & QUINCY RAILROAD COMPANY RIGHT-OF-WAY;

EXCEPTING, HOWEVER, FROM THE ABOVE DESCRIBED REAL ESTATE THE FOLLOWING DESCRIBED REALTY, TO-WIT: COMMENCING AT THE EASTERLY EDGE OF THE EASTERLY WING WALL OF THE BRIDGE OVER NELSON DEWEY CREEK IN SOFT. LOT FOUR (4) OF SECTION THIRTEEN (13), TOWN THREE (3) NORTH, RANGE SIX (6) WEST OF THE 4th P.M., GRANT COUNTY, WISCONSIN, AND UNDER THE CHICAGO, BURLINGTON & QUINCY RAILROAD COMPANY'S EASTERLY BOUND TRACK; THENCE SOUTHWEST 44 DEGREES 44 MINUTES EAST ALONG THE CENTERLINE OF THE SAID EASTERLY BOUND TRACK 1000 FEET; THENCE SOUTH 39 DEGREES 18 MINUTES WEST AT RIGHT ANGLES TO THE CENTERLINE OF SAID TRACK TO A POINT IN THE SOUTHERLY RIGHT-OF-WAY LINE OF SAID RAILROAD, WHICH POINT SHALL BE THE POINT OF BEGINNING FOR THIS DESCRIPTION; CONTINUING THENCE SOUTH 38 DEGREES 18 MINUTES WEST TO A POINT 657 FEET FROM THE CENTERLINE OF SAID EASTERLY BOUND TRACK; THENCE NORTH 55 DEGREES 28 MINUTES WEST TO THE CENTER OF NELSON DEWEY CREEK; THENCE NORTHEASTERLY ALONG THE CENTER OF NELSON DEWEY CREEK TO THE SOUTHERLY RIGHT-OF-WAY LINE OF SAID RAILROAD; THENCE SOUTHEASTERLY ALONG THE SOUTHERLY RIGHT-OF-WAY LINE OF SAID RAILROAD TO POINT OF BEGINNING; THE AFORESAID PARCEL BEING PART OF GOV. LOT FOUR (4), SECTION THIRTEEN (13), TOWN THREE (3) NORTH, RANGE SIX (6) WEST OF THE 4th P.M., GRANT COUNTY, WISCONSIN, LYING SOUTH OF THE CHICAGO, BURLINGTON & QUINCY RAILROAD AND EAST OF NELSON DEWEY CREEK AND PART OF THE SOUTHWEST ONE QUARTER (S.W. 1/4) OF SECTION EIGHTEEN (18), TOWN THREE (3) NORTH, RANGE FIVE (5) WEST OF THE 4th P.M., GRANT COUNTY, WISCONSIN, LYING SOUTH OF SAID RAILROAD; SUCH EXCEPTION CONTAINING 12 ACRES, MORE OR LESS;

THE REALTY HERETOFORE DESCRIBED AND HEREIN CONVEYED CONSISTING OF 130 ACRES MORE OR LESS.

LEGAL DESCRIPTION (AS SURVEYED)

PARCEL A

PART OF THE SOUTHWEST QUARTER (S.W. 1/4) OF THE SOUTHWEST QUARTER (S.W. 1/4) OF SECTION 18 AND PART OF THE GOVERNMENT LOTS 1, 2, AND 3 AND PART OF THE SOUTHEAST QUARTER (S.E. 1/4) OF THE NORTHEAST QUARTER (N.E. 1/4) AND PART OF THE NORTHWEST QUARTER (N.W. 1/4) OF THE NORTHEAST QUARTER (N.E. 1/4) OF SECTION 19, ALL IN TOWNSHIP 3 NORTH, RANGE 5 WEST, AND PART OF GOVERNMENT LOT 4 OF SECTION 13, TOWNSHIP 3 NORTH, RANGE 6 WEST, VILLAGE OF CASSVILLE, GRANT COUNTY, WISCONSIN.

COMMENCING AT THE EAST 1/4 CORNER OF SECTION 19, AFORESAID; THENCE SOUTH 89 DEGREES 52 MINUTES 52 SECONDS WEST, 1,075.08 FEET TO THE SOUTHWESTERLY RIGHT-OF-WAY LINE OF THE BURLINGTON NORTHERN AND SANTA FE RAILROAD AND THE POINT OF BEGINNING; THENCE CONTINUE SOUTH 89 DEGREES 52 MINUTES 52 SECONDS WEST, 1,225 FEET, MORE OR LESS, TO THE NORTHEASTERLY NORMAL HIGH WATER LINE OF THE MISSISSIPPI RIVER; THENCE NORTH 89 DEGREES 52 MINUTES 52 SECONDS EAST, 118 FEET, MORE OR LESS, TO A CONCRETE MONUMENT WITH BRASS CAP STAMPED UNITED STATES ARMY CORPS OF ENGINEERS, 263-1; MARKING A MEANDER CORNER; THENCE ALONG A MEANDER LINE NORTH 55 DEGREES 54 MINUTES 08 SECONDS WEST, 1125.39 FEET TO A MEANDER CORNER; THENCE ALONG A MEANDER LINE NORTH 48 DEGREES 04 MINUTES 13 SECONDS WEST, 894.42 FEET TO A MEANDER CORNER; THENCE ALONG A MEANDER LINE NORTH 51 DEGREES 59 MINUTES 55 SECONDS WEST, 477.70 FEET TO A MEANDER CORNER; THENCE ALONG A MEANDER LINE SOUTH 51 DEGREES 27 MINUTES 47 SECONDS WEST, 285.26 FEET TO A MEANDER CORNER; THENCE ALONG A MEANDER LINE NORTH 60 DEGREES 20 MINUTES 28 SECONDS WEST, 620.50 FEET TO A MEANDER CORNER; THENCE ALONG A MEANDER LINE NORTH 40 DEGREES 10 MINUTES 00 SECONDS WEST, 1564 FEET, MORE OR LESS, TO THE CENTER OF DEWEY CREEK; THENCE ALONG SAID MEANDER LINE SOUTH 40 DEGREES 10 MINUTES 00 SECONDS EAST, 72 FEET, MORE OR LESS TO A MEANDER CORNER; THENCE ALONG A MEANDER LINE NORTH 70 DEGREES 18 MINUTES 34 SECONDS EAST, 221.36 FEET TO A MEANDER CORNER; THENCE ALONG A MEANDER LINE NORTH 46 DEGREES 24 MINUTES 51 SECONDS EAST, 265.86 FEET TO A MEANDER CORNER; THENCE NORTH 55 DEGREES 18 MINUTES 07 SECONDS WEST, 94 FEET, MORE OR LESS, TO THE CENTER OF DEWEY CREEK; THENCE SOUTH 55 DEGREES 18 MINUTES 07 SECONDS EAST, 788 FEET, MORE OR LESS, TO A FOUND ONE INCH IRON PIPE; THENCE NORTH 38 DEGREES 25 MINUTES 53 SECONDS EAST, 571.17 FEET TO THE SOUTHWESTERLY RIGHT-OF-WAY LINE OF THE BURLINGTON NORTHERN AND SANTA FE RAILROAD; THENCE ALONG SAID RIGHT-OF-WAY LINE SOUTH 51 DEGREES 35 MINUTES 00 SECONDS EAST, 2808.91 FEET TO A SPIRAL CURVE; THENCE ALONG SAID RIGHT-OF-WAY LINE ALONG SAID SPIRAL CURVE TO A POINT OF CURVE LYING SOUTH 51 DEGREES 21 MINUTES 31 SECONDS EAST, 125.00 FEET FROM LAST REFERENCE POINT; THENCE CONTINUE ALONG SAID RIGHT-OF-WAY LINE ALONG SAID SPIRAL CURVE TO A 5175.00 FOOT RADIUS CURVE TO THE RIGHT SUBTENDED BY A LONG CHORD BEARING SOUTH 46 DEGREES 05 MINUTES 55 SECONDS EAST, 867.18 FEET TO A SPIRAL CURVE; THENCE CONTINUE ALONG SAID RIGHT-OF-WAY LINE ALONG SAID SPIRAL CURVE TO A POINT OF TANGENCY LYING SOUTH 40 DEGREES 50 MINUTES 20 SECONDS EAST, 123.81 FEET FROM LAST REFERENCE POINT; THENCE CONTINUE ALONG SAID RIGHT-OF-WAY LINE SOUTH 40 DEGREES 36 MINUTES 49 SECONDS EAST, 948.59 FEET TO THE POINT OF BEGINNING AND INCLUDING ALL LANDS LYING BETWEEN THE MEANDER LINE DESCRIBED HEREIN, THE CENTER OF DEWEY CREEK AND THE NORMAL HIGH WATER LINE OF THE MISSISSIPPI RIVER.

SAID PARCEL CONTAINS 4,973,411 SQUARE FEET OR 114,1738 ACRES TO THE MEANDER LINE AND 5,350,005 SQUARE FEET MORE OR LESS, OR 122.5 ACRES, MORE OR LESS, TO THE NORMAL HIGH WATER LINE OF THE MISSISSIPPI RIVER.

SURVEYOR'S CERTIFICATE

I, DAVE M. JENKINS, REGISTERED LAND SURVEYOR, HEREBY CERTIFY THAT THIS PLAT OF SURVEY AND MAP IS CORRECT TO THE BEST OF MY KNOWLEDGE AND BELIEF IN ACCORDANCE WITH THE INFORMATION PROVIDED.

Dave M. Jenkins
DAVE M. JENKINS, S-2255
REGISTERED LAND SURVEYOR
DATE: 09/18/06



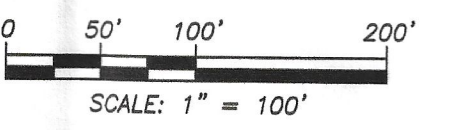
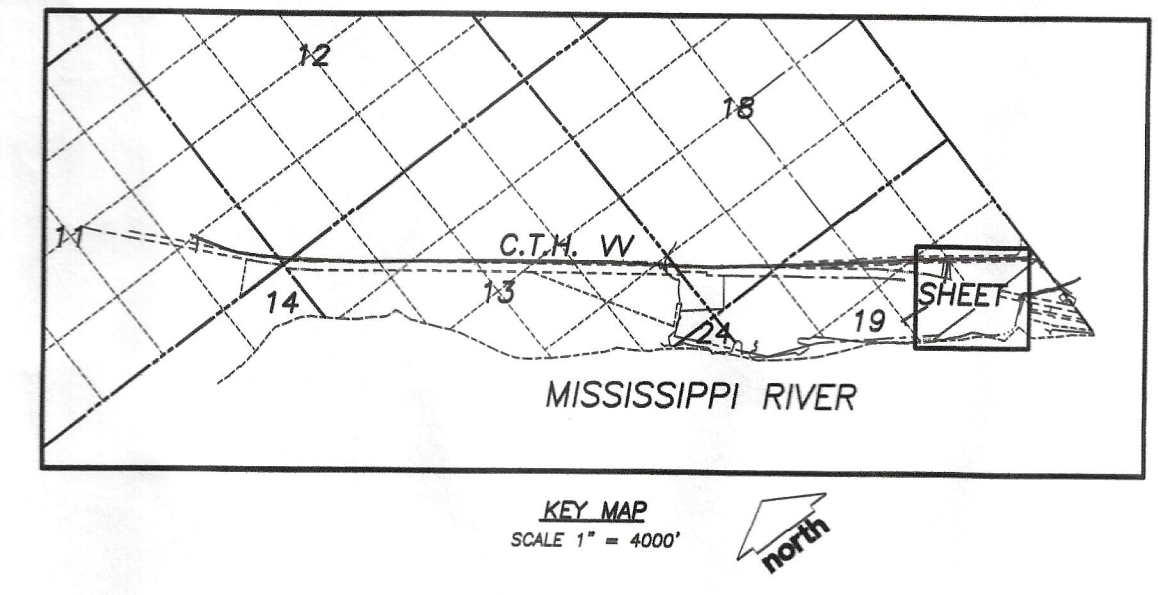
SURVEYED FOR:
BURNS & McDONNELL
9400 WARD PARKWAY
KANSAS CITY, MO 64114

CONTROL POINTS

CONTROL POINT	NORTHING	EASTING	DESCRIPTION
CM-1	485,267.338	731,441.373	N.W. CORNER OF SECTION 13-3-6
CM-2	485,247.039	731,441.492	USACE 264-1
CM-3	482,495.686	734,793.835	USACE 263-9
CM-4	480,245.735	736,188.812	USACE 263-8
CM-5	479,958.149	736,862.489	N.W. CORNER OF SECTION 19-3-5
CM-6	477,297.904	739,778.398	USACE 263-1
CM-7	477,302.430	741,958.323	EAST 1/4 CORNER OF SECTION 19-3-5

CURVE TABLE

CURVE	LENGTH	RADIUS	DELTA	TANGENT	CHORD	CHORD BEARING
C-5	868.00'	5175.00'	435.12°	867.18'	S 48°05'55" E	
C-6	893.36'	5325.00'	09°36'45"	447.73'	N 30°05'56" W	
S-1	125.00'	5275.00'	00°40'44"	123.81'	S 51°21'31" E	
S-2	125.00'	5275.00'	00°40'44"	123.81'	S 40°50'20" E	
S-3	125.00'	5275.00'	00°40'44"	123.81'	N 40°50'26" W	
S-4	125.00'	5275.00'	00°40'44"	123.81'	N 51°21'28" W	



TO OBTAIN LOCATIONS OF PARTICIPANT UNDERGROUND UTILITIES BEFORE YOU DIG IN WISCONSIN

CALL DIGGERS HOTLINE
1-800-242-8511 TOLL FREE

WISCONSIN STATE STATUTE 95.01(1)(a) REQUIRES MINIMUM THREE (3) WORK DAYS NOTICE BEFORE YOU EXCAVATE

THE INFORMATION SHOWN ON THIS DRAWING CONCERNING THE LOCATION OF UNDERGROUND UTILITIES IS NOT GUARANTEED TO BE ACCURATE OR COMPLETE. THE CONTRACTOR IS RESPONSIBLE FOR MARKING THE LOCATION OF UNDERGROUND UTILITIES AS NECESSARY TO AVOID DAMAGE THERETO.

PLAT OF SURVEY

DATE	DESCRIPTION
08-04-2006	
08-17-2006	
08-17-2006	

DRAWN BY: JK
CHECKED BY: SO
APPROVED BY: DMJ

DWGNAME: 062350.dwg
DATE: 08/18/06

PROJECT NO: 06-2350
FILE NO: C-115
SURVEYED: JK/DB/TG
F.B. NO/PG: 194/1
SHEET NO: 6 OF 6

JSD Engineers & Surveyors
Jenkins Survey & Design, Inc.
161 HORIZON DRIVE, SUITE 101
VERONA, WISCONSIN 53593
PHONE: (608)948-5060