

PLAT OF SURVEY

DESCRIPTION PROVIDED:

Unit No. Two (2) in Grant River II Condominium created by "Declaration of Condominium" recorded on February 16, 2007, in the Office of the Register of Deeds for Grant County, Wisconsin, in Volume 1127 of Records on Page 660, as Document No. 695928, and by its Condominium Plat. Together with rights in Common Elements and Limited Common Elements as set forth in the Declaration of Grant River II Condominium, as amended, dated February 12, 2007 and recorded February 16, 2007 at the Office of the Register of Deeds in Volume 1127 of Records, page 660, as Document No. 695928.

SURVEYOR'S CERTIFICATE:

I, Aaron J. Austin, Professional Wisconsin Land Surveyor, hereby certify:

That the above description was surveyed, mapped and monumented as shown on this plat by me or under my direct supervision and field work was completed on 8-10-2021.

That this survey was prepared under the instructions of Brian Chapman.

That this survey complies with Chapter A-E 7 of the Wisconsin Administrative Code and to the best of my knowledge and belief, this plat is an accurate representation thereof.

That all plans that do not show a seal imprint in red ink may contain unauthorized alterations.

The certification contained on this document shall not apply to any copies.

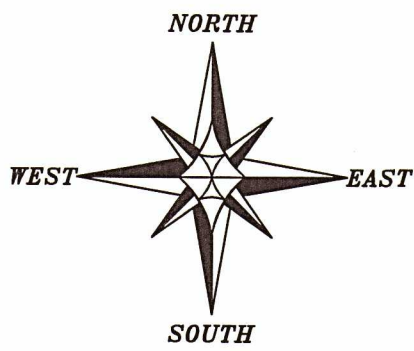
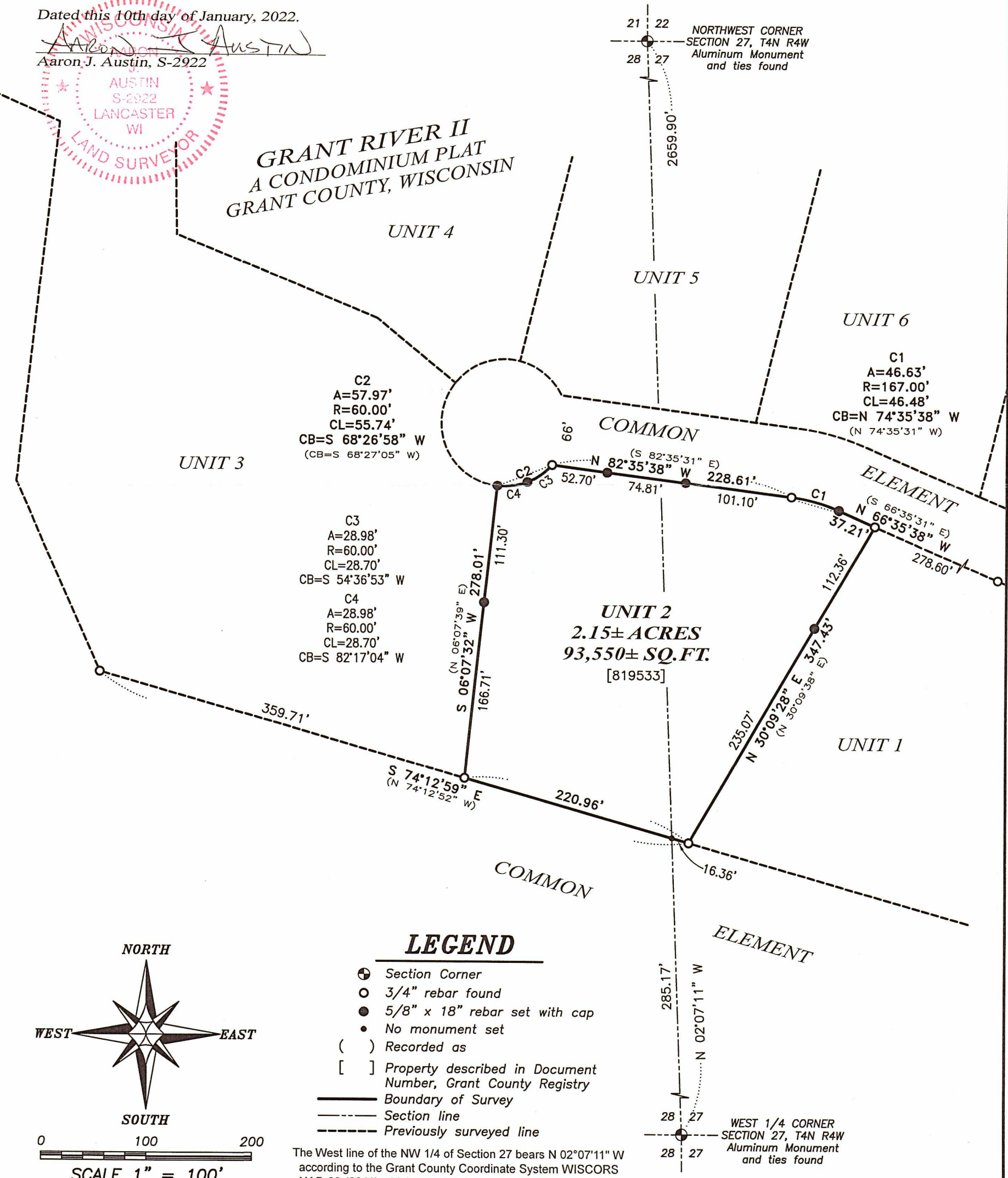
Dated this 10th day of January, 2022.

Aaron J. Austin
Aaron J. Austin, S-2922



48017
FEB 09 2022

**GRANT RIVER II
A CONDOMINIUM PLAT
GRANT COUNTY, WISCONSIN**



0 100 200
SCALE 1" = 100'

LEGEND

- ⊕ Section Corner
- 3/4" rebar found
- 5/8" x 18" rebar set with cap
- No monument set
- () Recorded as
- [] Property described in Document Number, Grant County Registry
- Boundary of Survey
- - - Section line
- - - Previously surveyed line

The West line of the NW 1/4 of Section 27 bears N 02°07'11" W according to the Grant County Coordinate System WISCORS NAD 83 (2011) which was determined by G.P.S. observation.

Austin Engineering LLC
austinengineeringllc.com
4211 HWY 81 E, LANCASTER, WI 53813
PHONE: 608-723-6363 FAX: 608-723-6702

Prepared for: **BRIAN CHAPMAN**

JOB NO: 21S201
H:\CRD\21S201
H:\PLAT\T4NR4W\GRANT RIVER
CONDO\21S201-CHAPMAN

FIELDBOOK: TDSR
DRAWN BY: AJ AUSTIN
CREW: SHANE AUSTIN