

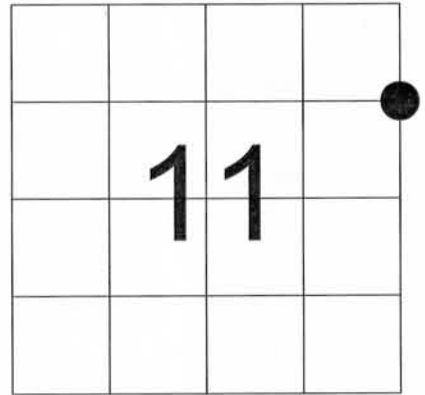
PREPARED BY: BUESING & ASSOCIATES ADDRESS: 1212 LOCUST STREET, DUBUQUE, IOWA 52001 PHONE: (563) 556-4389

UNITED STATES PUBLIC LAND SURVEY MONUMENT RECORD -GRANT COUNTY, WI
 Northeast Corner of the Southeast 1/4 of the Northeast 1/4 of Section 11,
 Town 3 North, Range 6 West, Town of Cassville West



I HEREBY CERTIFY THAT THIS LAND SURVEYING DOCUMENT WAS PREPARED AND THE RELATED SURVEY WORK WAS PERFORMED BY ME OR UNDER MY DIRECT PERSONAL SUPERVISION AND THAT I AM A DULY LICENSED LAND SURVEYOR UNDER THE LAWS OF THE STATE OF WISCONSIN.

Kenneth L. Buesing 12 DEC. 2011
 KENNETH L. BUESING (DATE)
 LICENSE NUMBER S-2217



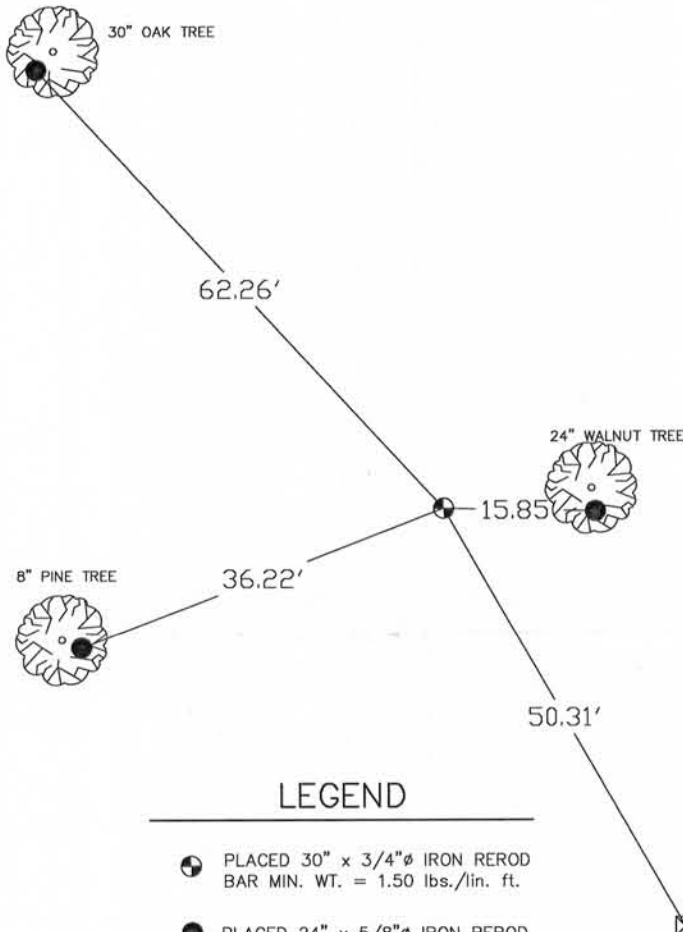
● = CORNER LOCATION

History of Corner

No records found in the county's recorder's office and no monumentation found.

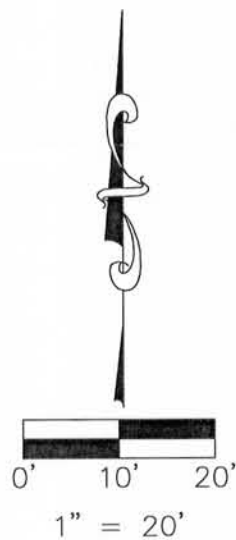
Monument Description and Remarks

Set 3/4" rod @ the NE corner of the SE1/4 of the NE1/4. Corner set on line and at the midpoint between the previously established NW corner and East 1/4 of Section 11. The East 1/4 was corner based upon a 1965 survey of Warner Wright.



LEGEND

- PLACED 30" x 3/4" Ø IRON REROD BAR MIN. WT. = 1.50 lbs./lin. ft.
- PLACED 24" x 5/8" Ø IRON REROD
- ⊠ FOUND 1" IRON PIPE



DEC 14 2011

SHEET 1 OF 1	PROJECT	NO. 11239	BUESING ASSOCIATES INC. ENGINEERS AND SURVEYORS 1212 LOCUST ST, DUBUQUE, IA (563) 556-4389	DATE	REVISIONS	DRAWN BY:	
	LAND SURVEY MONUMENT RECORD	WITNESSES TO CORNER LOCATION		JOHN HERMSEN NICHOLAS LANGE	12/09/11		NWL
					SCALE:		CHECKED BY:
				1" = 20'		KLB	

23c