

# UNITED STATES PUBLIC LAND SURVEY CORNER CERTIFICATE OF

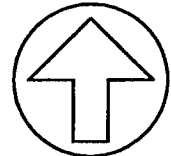
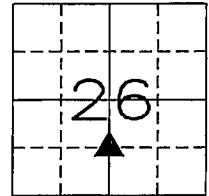
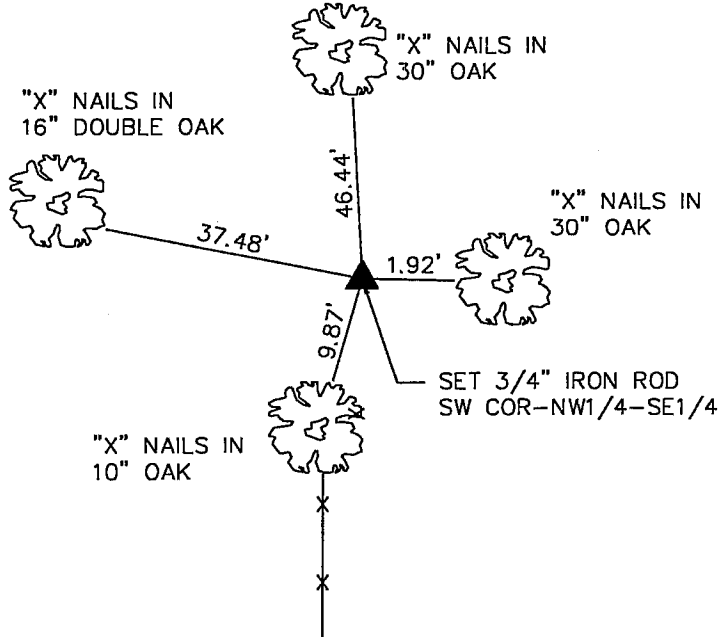
LAND SURVEY MONUMENTS SITUATED IN SECTION 26, TOWNSHIP 1 NORTH, RANGE 2 WEST  
OF THE FOURTH PRINCIPAL MERIDIAN, GRANT COUNTY, WISCONSIN.  
PREVIOUSLY RECORDED IN \_\_\_\_\_ IN COUNTY RECORDER'S OFFICE.

(Show reason for preparing this certificate, the evidence and detailed procedures used in establishing the corner positions and monumentation found or placed.)

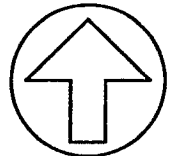
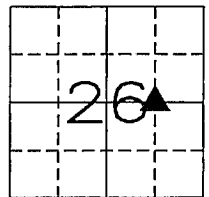
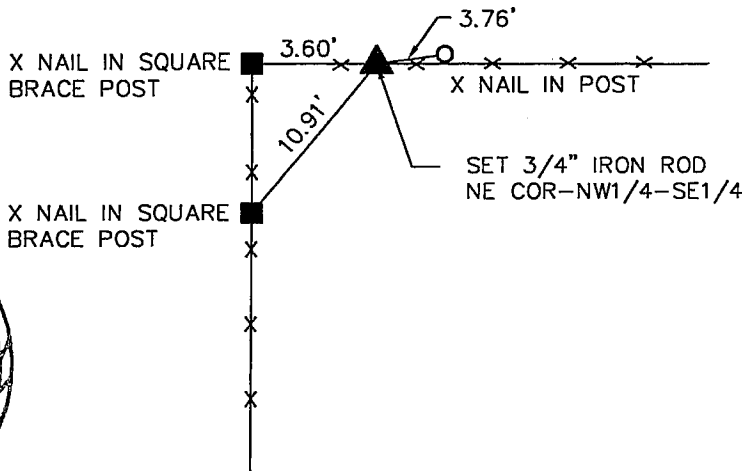
Monument Description and Remarks: \_\_\_\_\_  
SW CORNER OF THE NW1/4 OF THE SE1/4 OF SECTION 26. T1N. R2W - SET 3/4" X 24" IRON ROD  
NE CORNER OF THE NW1/4 OF THE SE1/4 OF SECTION 26. T1N. R2W - SET 3/4" X 24" IRON ROD  
\_\_\_\_\_  
\_\_\_\_\_

## PLAN - VIEW

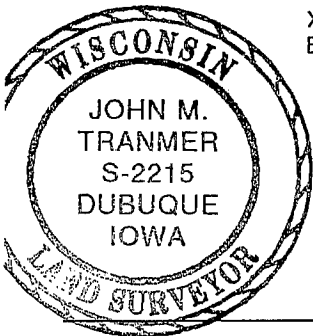
(Show a minimum of three reference ties to durable physical objects, relevant monuments and physical conditions that will enable recovery of the corner.)



NO SCALE



NO SCALE




I HEREBY CERTIFY THAT THE SURVEY WORK WAS COMPLETED AND THIS CERTIFICATE WAS PREPARED BY ME OR UNDER MY DIRECT PERSONAL SUPERVISION AND THAT I AM A DULY REGISTERED LAND SURVEYOR UNDER THE LAWS OF THE STATE OF WISCONSIN.

*John M. Tranmer*  
JOHN M. TRANMER REG. NO. S-2215

DATE: 7-25-00  
MY REGISTRATION EXPIRES JANUARY 31, 2002

### LIST CORNERS TO BE INDEXED

CORNERS	SECTION	TWP	RANGE
SW COR, NW1/4, SE1/4	26	T1N	R2W
NE COR, NW1/4, SE1/4	26	T1N	R2W

 <b>ENGINEERS AND SURVEYORS P.C.</b> Iowa, Illinois, Wisconsin 4155 Pennsylvania Ave. Dubuque, Ia. 52002 (319) 556-2464 Guttenberg, IA Galena, IL Cuba City, WI	<b>MONUMENT RECORD</b>		
	COUNTY: <u>GRANT</u> TOWNSHIP: <u>JAMESTOWN</u>		DATE: <u>7-17-00</u> REVISED: