

# PLAT OF SURVEY

H:\PLAT\TSM62M\091215049-REDDY-AG

NORTH 1/4 CORNER  
SECTION 9, 15N R2W  
T10N R15E  
New to sheet.

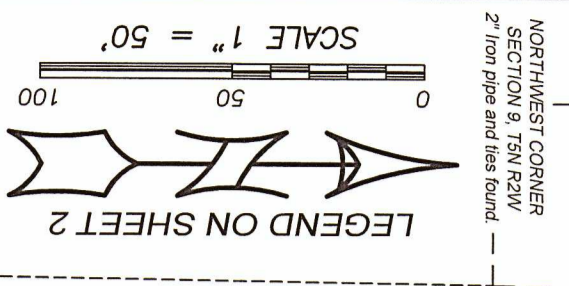
2658.17'

941.47'

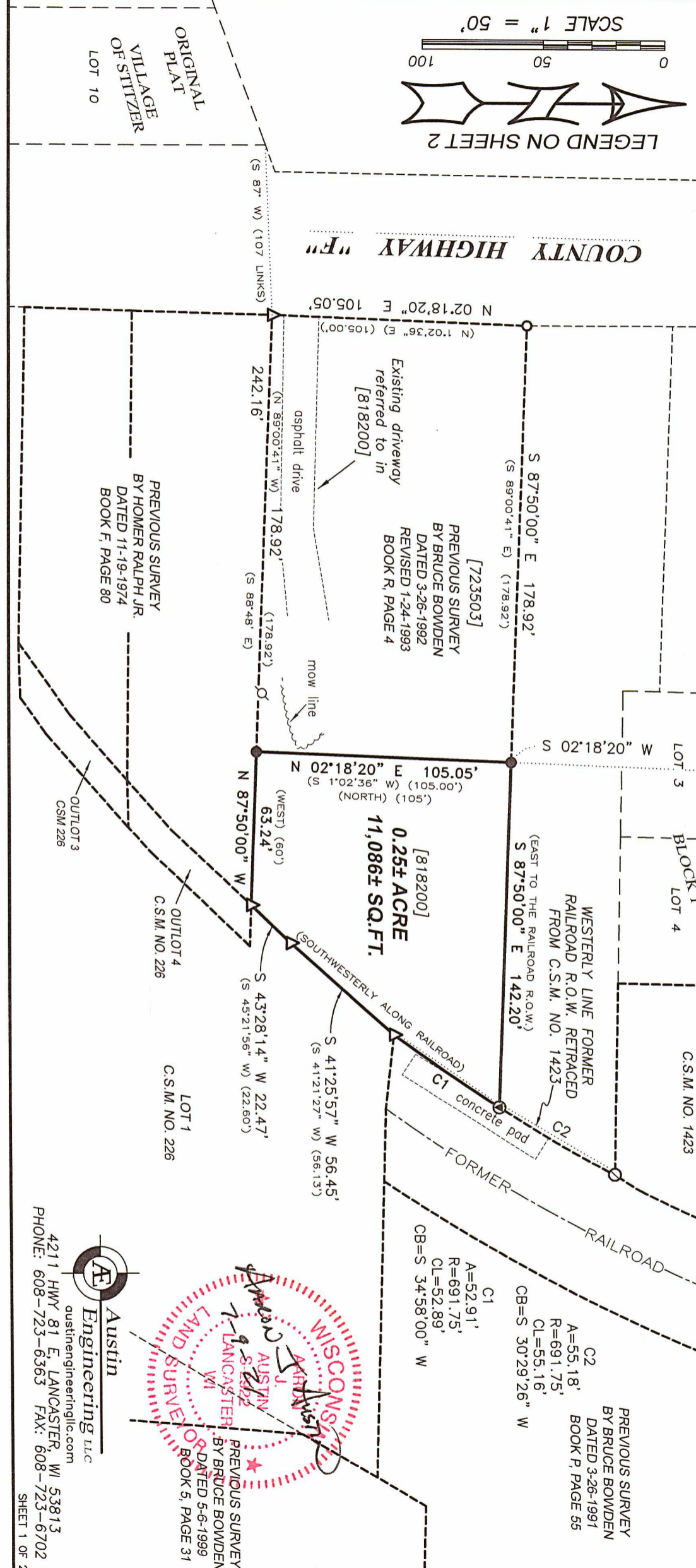
S 89°46'19" E

5  
4  
3  
2  
1

9  
8  
7  
6  
5  
4  
3  
2  
1



NORTHWEST CORNER  
SECTION 9, 15N R2W  
T10N R15E and line found.



COUNTY HIGHWAY "F"

LEGEND ON SHEET 2

SCALE 1" = 50'

NORTHWEST CORNER

SECTION 9, 15N R2W

T10N R15E and line found.

LOT 3  
LATHEOPS ADDN  
BLOCK 1  
LOT 4

LOT 1  
C.S.M. NO. 1423

PREVIOUS SURVEY  
BY BRUCE BOWDEN  
DATED 5-25-1991  
BOOK P, PAGE 55  
A=53.18'  
R=691.75'  
C1=53.16'  
CB=S 30°29'26" W

PREVIOUS SURVEY  
BY BRUCE BOWDEN  
DATED 3-26-1992  
REVISED 1-24-1993  
BOOK R, PAGE 4  
[723503]

EXISTING DRIVEWAY  
REFERRED TO IN  
[818200]

WESTERLY LINE FORMER  
RAILROAD R.O.W. RETROICED  
FROM C.S.M. NO. 1423  
S 87°50'00" E 142.20'

PREVIOUS SURVEY  
BY BRUCE BOWDEN  
DATED 5-6-1999  
BOOK 5, PAGE 31  
A=52.91'  
R=691.75'  
C1=52.89'  
CB=S 34°58'00" W

PREVIOUS SURVEY  
BY HOMER RALPH JR.  
DATED 1-16-1974  
BOOK F, PAGE 80

ORIGINAL  
VILLAGE  
PLAT  
OF STITZLER  
LOT 10

0  
50  
100

LEGEND ON SHEET 2

SCALE 1" = 50'

NORTHWEST CORNER

SECTION 9, 15N R2W

T10N R15E and line found.

2658.17'

941.47'

S 89°46'19" E

5  
4  
3  
2  
1

9  
8  
7  
6  
5  
4  
3  
2  
1

NORTHWEST CORNER

SECTION 9, 15N R2W

T10N R15E and line found.

2658.17'

941.47'

S 89°46'19" E

5  
4  
3  
2  
1

9  
8  
7  
6  
5  
4  
3  
2  
1

NORTHWEST CORNER

SECTION 9, 15N R2W

T10N R15E and line found.

2658.17'

941.47'

S 89°46'19" E

5  
4  
3  
2  
1

9  
8  
7  
6  
5  
4  
3  
2  
1

NORTHWEST CORNER

SECTION 9, 15N R2W

T10N R15E and line found.

2658.17'

941.47'

S 89°46'19" E

5  
4  
3  
2  
1

9  
8  
7  
6  
5  
4  
3  
2  
1

NORTHWEST CORNER

SECTION 9, 15N R2W

T10N R15E and line found.

2658.17'

941.47'

S 89°46'19" E

5  
4  
3  
2  
1

9  
8  
7  
6  
5  
4  
3  
2  
1

NORTHWEST CORNER

SECTION 9, 15N R2W

T10N R15E and line found.

2658.17'

941.47'

S 89°46'19" E

5  
4  
3  
2  
1

9  
8  
7  
6  
5  
4  
3  
2  
1

NORTHWEST CORNER

SECTION 9, 15N R2W

T10N R15E and line found.

2658.17'

941.47'

S 89°46'19" E

5  
4  
3  
2  
1

9  
8  
7  
6  
5  
4  
3  
2  
1

NORTHWEST CORNER

SECTION 9, 15N R2W

T10N R15E and line found.

2658.17'

941.47'

S 89°46'19" E

5  
4  
3  
2  
1

9  
8  
7  
6  
5  
4  
3  
2  
1

NORTHWEST CORNER

SECTION 9, 15N R2W

T10N R15E and line found.

2658.17'

941.47'

S 89°46'19" E

5  
4  
3  
2  
1

9  
8  
7  
6  
5  
4  
3  
2  
1

NORTHWEST CORNER

SECTION 9, 15N R2W

T10N R15E and line found.

2658.17'

941.47'

S 89°46'19" E

5  
4  
3  
2  
1

9  
8  
7  
6  
5  
4  
3  
2  
1

NORTHWEST CORNER

SECTION 9, 15N R2W

T10N R15E and line found.

2658.17'

941.47'

S 89°46'19" E

5  
4  
3  
2  
1

9  
8  
7  
6  
5  
4  
3  
2  
1

NORTHWEST CORNER

SECTION 9, 15N R2W

T10N R15E and line found.

2658.17'

941.47'

S 89°46'19" E

5  
4  
3  
2  
1

9  
8  
7  
6  
5  
4  
3  
2  
1

NORTHWEST CORNER

SECTION 9, 15N R2W

T10N R15E and line found.

2658.17'

941.47'

S 89°46'19" E

5  
4  
3  
2  
1

9  
8  
7  
6  
5  
4  
3  
2  
1

NORTHWEST CORNER

SECTION 9, 15N R2W

T10N R15E and line found.

2658.17'

941.47'

S 89°46'19" E

5  
4  
3  
2  
1

9  
8  
7  
6  
5  
4  
3  
2  
1

NORTHWEST CORNER

SECTION 9, 15N R2W

T10N R15E and line found.

2658.17'

941.47'

S 89°46'19" E

5  
4  
3  
2  
1

9  
8  
7  
6  
5  
4  
3  
2  
1

NORTHWEST CORNER

SECTION 9, 15N R2W

T10N R15E and line found.

2658.17'

941.47'

S 89°46'19" E

5  
4  
3  
2  
1

9  
8  
7  
6  
5  
4  
3  
2  
1

NORTHWEST CORNER

SECTION 9, 15N R2W

T10N R15E and line found.

2658.17'

941.47'

S 89°46'19" E

5  
4  
3  
2  
1

9  
8  
7  
6  
5  
4  
3  
2  
1

NORTHWEST CORNER

SECTION 9, 15N R2W

T10N R15E and line found.

2658.17'

941.47'

S 89°46'19" E

5  
4  
3  
2  
1

9  
8  
7  
6  
5  
4  
3  
2  
1

NORTHWEST CORNER

SECTION 9, 15N R2W

T10N R15E and line found.

2658.17'

941.47'

S 89°46'19" E

5  
4  
3  
2  
1

9  
8  
7  
6  
5  
4  
3  
2  
1

NORTHWEST CORNER

SECTION 9, 15N R2W

T10N R15E and line found.

2658.17'

941.47'

S 89°46'19" E

5  
4  
3  
2  
1

9  
8  
7  
6  
5  
4  
3  
2  
1

NORTHWEST CORNER

SECTION 9, 15N R2W

T10N R15E and line found.

2658.17'

941.47'

S 89°46'19" E

5  
4  
3  
2  
1

9  
8  
7  
6  
5  
4  
3  
2  
1

NORTHWEST CORNER

SECTION 9, 15N R2W

T10N R15E and line found.

2658.17'

941.47'

S 89°46'19" E

5  
4  
3  
2  
1

9  
8  
7  
6  
5  
4  
3  
2  
1

NORTHWEST CORNER

SECTION 9, 15N R2W

T10N R15E and line found.

2658.17'

941.47'

S 89°46'19" E

5  
4  
3  
2  
1

9  
8  
7  
6  
5  
4  
3  
2  
1

NORTHWEST CORNER

SECTION 9, 15N R2W

T10N R15E and line found.

2658.17'

941.47'

S 89°46'19" E

5  
4  
3  
2  
1

9  
8  
7  
6  
5  
4  
3  
2  
1

NORTHWEST CORNER

SECTION 9, 15N R2W

T10N R15E and line found.

2658.17'

941.47'

S 89°46'19" E

5  
4  
3  
2  
1

9  
8  
7  
6  
5  
4  
3  
2  
1

NORTHWEST CORNER

SECTION 9, 15N R2W

T10N R15E and line found.

2658.17'

941.47'

S 89°46'19" E

5  
4  
3  
2  
1

9  
8  
7  
6  
5  
4  
3  
2  
1

NORTHWEST CORNER

SECTION 9, 15N R2W

T10N R15E and line found.

2658.17'

941.47'

S 89°46'19" E

5  
4  
3  
2  
1

9  
8  
7  
6  
5  
4  
3  
2  
1

NORTHWEST CORNER

SECTION 9, 15N R2W

T10N R15E and line found.

2658.17'

941.47'

S 89°46'19" E

5  
4  
3  
2  
1

9  
8  
7  
6  
5  
4  
3  
2  
1

</

4700Z

# PLAT OF SURVEY

**DESCRIPTION PROVIDED:**

Property described in Warranty Deed recorded as Document Number 818200, Grant County Registry and being described as follows:

A parcel of land located in the NW 1/4 of the NW 1/4 of Section 9, Township 5 North, Range 2 West, Town of Liberty, Grant County, Wisconsin described as follows:

Commencing at a point from which the Northeast corner of Lot 10 of the Original Plat of the Village of Stitzer, Grant County, Wisconsin, bears South 87° W 107 links, thence East 178.92 feet to the place of beginning; thence North 105 feet; thence East to the railroad right-of-way; thence Southwesterly along the railroad right-of-way to a point directly East of the point of beginning; thence 60 feet West to the point of beginning.

(Note: The railroad right-of-way referenced in this legal description is the former Chicago and Northwestern Transportation Company railroad right-of-way.)

Grantor also conveys to Grantee, without warranty, the following described right of ingress and egress to the property described in this Warranty Deed:

The right of ingress and egress from the public highway lying along the East line of the premises in said deed described and along the South line of said premises, over an existing driveway.

(North: The deed referenced in the above description is a Warranty Deed dated March 5, 1928 and recorded in the Grant County Register of Deeds Office on March 23, 1928 in Volume 225 at Page 79 as Document Number 43290.)

This right of ingress and egress was conveyed to Grantor Clarence L. Becker and Edna Becker in that certain Quit Claim Deed dated July 31, 1948 in Volume 263 at Page 548 as Document Number 194639.

**SURVEYOR'S CERTIFICATE:**

I, Aaron J. Austin, Professional Wisconsin Land Surveyor, hereby certify:

That the above description was surveyed, mapped and monumented as shown on this plat by me or under my direct supervision and field work was completed on 7-1-2021.

That this survey was prepared under the instructions of Greg Budack.

That this survey complies with Chapter A-E 7 of the Wisconsin Administrative Code and to the best of my knowledge and belief, this plat is an accurate representation thereof.

That all plans that do not show a seal imprint in red ink may contain unauthorized alterations.

The certification contained on this document shall not apply to any copies.

Dated this 9th day of July, 2021.



## LEGEND

- ⊕ Section Corner—as designated
- 3/4" rebar found
- △ 1" diameter iron pipe found
- ⊙ 5/8" rebar found
- 5/8" x 18" rebar set with cap
- Ⓜ Mag nail set
- No monument set
- ( ) Recorded as
- [ ] Property described in Document Number, Grant County Registry
- Boundary of Survey
- Section line
- Centerline
- - - - - Platted lot
- Previously surveyed line
- Existing improvement

The North line of the NW 1/4 of Section 9 bears S 89°46'19" E according to the Grant County Coordinate System WISCORS NAD 83 (2011) which was determined by G.P.S. observation.