

PLAT OF SURVEY

Prepared for: HAVERLAND FAMILY

LEGEND

- ⊕ Section Corner—as designated
- 3/4" rebar found
- △ 1" diameter iron pipe found
- ⊠ 1" rebar found
- 3/4" x 18" rebar set with cap
- Section line
- - - Right of Way
- - - - - Previously surveyed line

TRACT 1
PREVIOUS SURVEY
BY AARON AUSTIN
DATED 6-26-2014
BOOK 35, PAGE 72

SOUTHWEST CORNER
SECTION 1, T1N R2W
Stone found and
witness corners

2 1
11 12
299.16'
S 87°55'23" E

N 64°24'26" E 908.22'

(S 26°00'57" E)
S 25°35'34" E 220.00'

(S 63°59'03" W)
N 64°24'26" E 90.59'

(S 26°00'57" E)
S 25°35'34" E 154.41'

(S 63°59'03" W)
N 64°24'26" E 98.10'

PARCEL 1
C.S.M. NO. 870

PARCEL 2
C.S.M. NO. 870

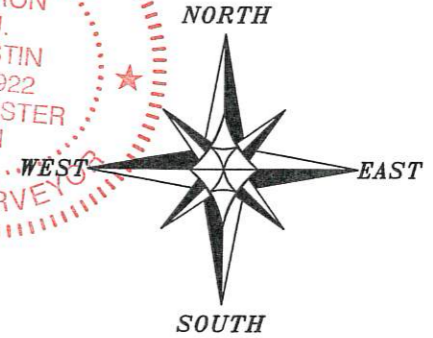
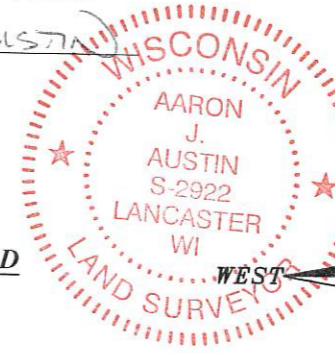
PARCEL 3
C.S.M. NO. 870

found
disturbed
-reset-

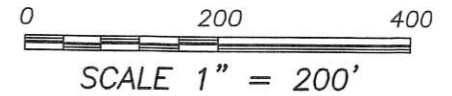
Aaron J. Austin
Aaron J. Austin, S-2922

SURVEYOR'S CERTIFICATE:

I, Aaron J. Austin, Professional Wisconsin Land Surveyor, hereby certify:
That the monuments shown hereon were surveyed, mapped and monumented as shown on this plat by me or under my direct supervision and field work was completed on 5-2-2018.. That this survey was prepared under the instructions of Bob Noble. That this survey complies with Chapter A-E 7 of the Wisconsin Administrative Code and to the best of my knowledge and belief, this plat is an accurate representation thereof. That all plans that do not show a seal imprint in red ink may contain unauthorized alterations. The certification contained on this document shall not apply to any copies.
Dated this 31st day of October, 2018.



The South line of the SW 1/4 of Section 1 bears S 87°55'23" E according to the Grant County Coordinate System WISCORS NAD 83 (2011) which was determined by G.P.S. observation.



SOUTH 1/4 CORNER
SECTION 1, T1N R2W
1" Rebar with Grant
County Alum. Cap and
witness corners found

2671.58'



Austin
Engineering LLC
austinengineeringllc.com

4211 HWY 81 E, LANCASTER, WI 53813
PHONE: 608-723-6363 FAX: 608-723-6702

42076

H:\PLAT\T1NR2W\01\18S088-HAVERLAND
CREW: SW AUSTIN DRAWN BY: AJ AUSTIN