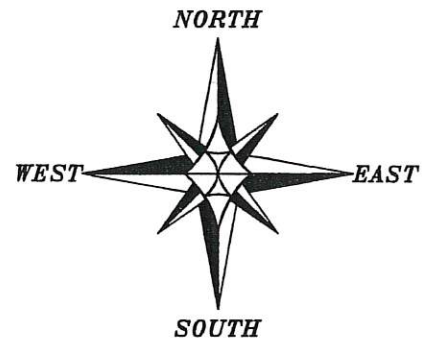


PLAT OF SURVEY

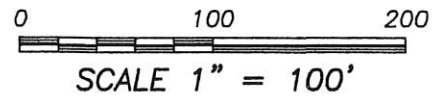
Prepared for: **BRYAN WETTER**

LEGEND

- ⊕ Section Corner—as designated
- 3/4" rebar found
- 3/4" x 18" rebar set with cap
- 4' Wood lath set
- + No monument set
- ⊠ Electric pedestal
- () Recorded as
- [-] Property described in Volume and Page, Grant County Registry
- Boundary line Surveyed
- ▨ Existing Improvement—as labeled
- Section line
- Centerline
- Right of Way
- Previously surveyed line
- Existing easement line
- Existing mow line



The East line of the SE 1/4 of Section 21 bears N 01°24'17" W according to the Grant County Coordinate System WISCORS NAD 83 (2011) which was determined by G.P.S. observation.



SURVEYOR'S CERTIFICATE:

I, Aaron J. Austin, Professional Wisconsin Land Surveyor, hereby certify:

That the lines hereon were surveyed, mapped and monumented as shown on this plat by me or under my direct supervision and field work was completed on 9-27-2018.

That this survey was prepared under the instructions of Bryan Wetter.

That this survey complies with Chapter A-E 7 of the Wisconsin Administrative Code and to the best of my knowledge and belief, this plat is an accurate representation thereof.

That all plans that do not show a seal imprint in red ink may contain unauthorized alterations.

The certification contained on this document shall not apply to any copies.

Dated this 1st day of October, 2018:

Aaron J. Austin
 Aaron J. Austin, S-2922
 LAND SURVEYOR



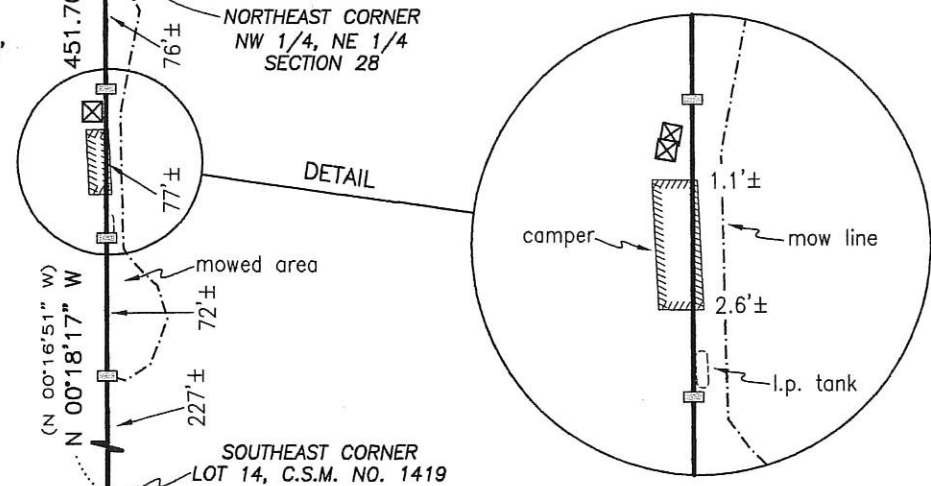
LOT 1
 C.S.M. NO. 1518

SOUTH 1/4 CORNER
 SECTION 21, T7N R3W
 1" Rebar with Grant County
 Aluminum Cap and ties found

N 89°37'03" W
 119'± 181'± 115'±
 415.01'

NORTHEAST CORNER
 NW 1/4, NE 1/4
 SECTION 28

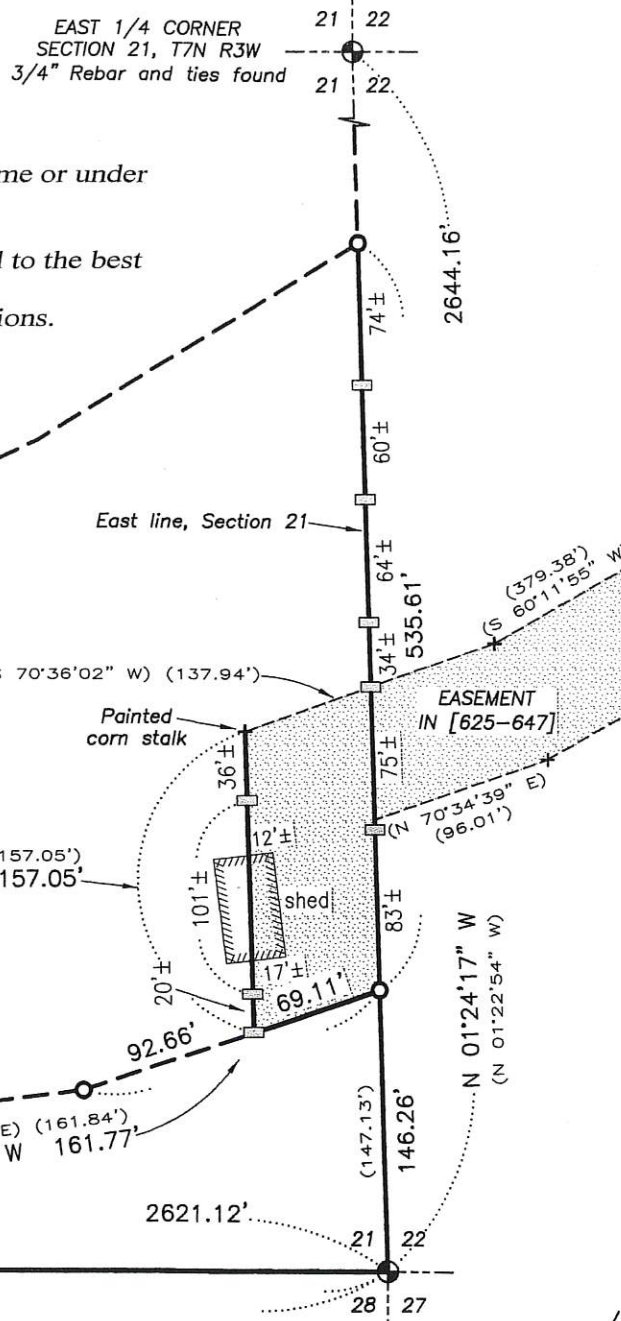
NE 1/4 - NE 1/4



1310.56' 451.70' 76'± 77'±
 mowed area 72'± 227'±
 SOUTH EAST CORNER
 LOT 14, C.S.M. NO. 1419

1310.56' 895.55' South line, Section 21

SOUTHEAST CORNER
 SECTION 21, T7N R3W
 3/4" Rebar and ties found



EAST 1/4 CORNER
 SECTION 21, T7N R3W
 3/4" Rebar and ties found

PINE KNOB ROAD

Austin Engineering LLC
 austinengineeringllc.com
 4211 HWY 81 E, LANCASTER, WI 53813
 PHONE: 608-723-6363 FAX: 608-723-6702
 H:\PLAT\T7NR3W\21\18S186-WETTER
 CREW: S. AUSTIN, DRAWN BY: AJ AUSTIN

RECEIVED
 By Land Information Office at 9:52 am, Oct 23, 2018