

42011

JUL 30 2018

# PLAT OF SURVEY

NORTH 1/4 CORNER  
SECTION 16, T5N R6W  
1" Rebar with Grant Co.  
Aluminum Cap found  
and witness corners

### SURVEYOR'S CERTIFICATE:

I, Aaron J. Austin, Professional Wisconsin Land Surveyor, hereby certify:

That the East line of the Northeast 1/4 of the Northwest 1/4 was surveyed, mapped and monumented as shown on this plat by me or under my direct supervision and field work was completed on 6-20-2018.

That this survey was prepared under the instructions of Dale Wood. That this survey complies with Chapter A-E 7 of the Wisconsin Administrative Code and to the best of my knowledge and belief, this plat is an accurate representation thereof.

That all plans that do not show a seal imprint in red ink may contain unauthorized alterations.

The certification contained on this document shall not apply to any copies.

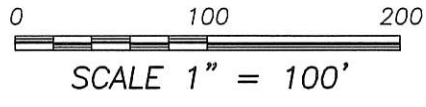
Dated this 28th day of July, 2018.

*Aaron J. Austin*  
Aaron J. Austin, S-2922

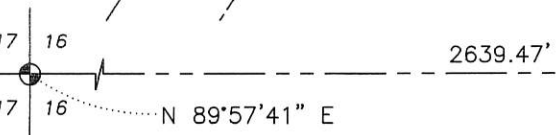
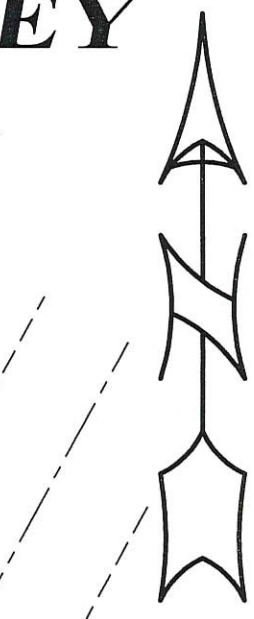
PREVIOUS SURVEY  
BY LARRY AUSTIN  
DATED 8-26-2004  
BOOK 15, PAGE 88

### LEGEND

- ⊕ Section Corner—as designated
- 3/4" rebar found
- 3/4" x 18" rebar set with cap
- ( ) Recorded as
- x-x- Approximate fence
- Boundary of Survey
- Section line
- - - Centerline
- - - Right of Way

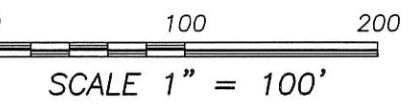


COUNTY HIGHWAY "P"  
WIDTH VARIES

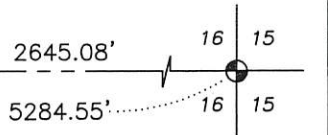


WEST 1/4 CORNER  
SECTION 16, T5N R6W  
Aluminum Monument found  
and witness corners

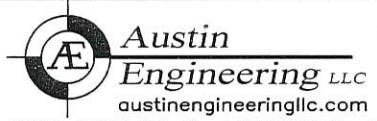
SOUTHEAST CORNER  
NE 1/4, NW 1/4



SOUTH 1/4 CORNER  
SECTION 16, T5N R6W  
9" x 12" Pointed Stone  
found and witness corners



EAST 1/4 CORNER  
SECTION 16, T5N R6W  
1" Rebar with Grant Co.  
Aluminum Cap found  
and witness corners



Prepared for: DALE WOOD

4211 HWY 81 E, LANCASTER, WI 53813  
PHONE: 608-723-6363 FAX: 608-723-6702

JOB NO: 18S056  
H:\CRD\18S056  
H:\PLAT\T5NR6W\16\18S056-WOOD

FIELDBOOK: TDSR  
DRAWN BY: AJ AUSTIN  
CREW: S. AUSTIN, O. AUSTIN