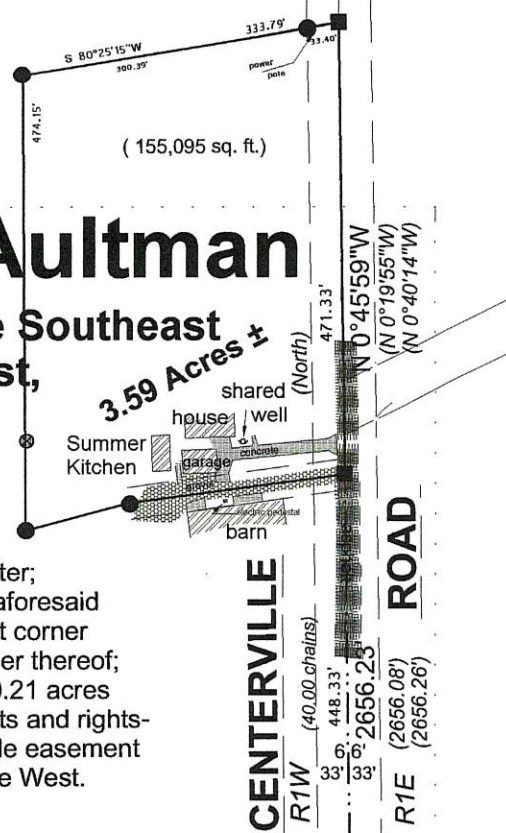


# Plat of Survey for Chris Aultman

## of the East quarter of the Northeast Quarter of the Southeast Quarter of Section 12, Town 6 North, Range 1 West, Wingville Township, Grant County, Wisconsin.

Described as beginning at the Northeast corner of the said Southeast quarter; thence S 0°02'04"E, 1324.76' to a #6 rebar at the Southeast corner of the aforesaid East quarter; thence S 89°09'46"W, 335.26' to a #6 rebar at the Southwest corner thereof; thence N 0°04'18"W, 1326.38' to a #6 rebar at the Northwest corner thereof; thence N 89°26'23"E, 336.11' to the point of beginning. Parcel contains 10.21 acres (444,946 square feet), more or less, and is subject to any and all easements and rights-of-way of record and/or usage, including but not limited to a twelve foot wide easement for ingress and egress from Centerville Road to the adjacent property to the West.



SE ¼ of the NE ¼

quarter section line

336.11'

E ¼ corner, Section 12, T6N, R1W. all ties found

### LEGEND

- ▲ - 1" dia. solid rod - found
- ⊕ - Iowa County Cast Iron Monument (3½" dia.) - found
- - Railroad spike - found
- ⊗ - 1" dia. iron pipe - found
- - No.6 (¾" dia.) rebar - found
- - No.6 (¾" dia.) x 24" rebar - set
- - 'T' post - set as guard
- ( ) - Recorded As
- - Fence

Note: Bearings are referenced to the East Line of the Southeast Quarter of Section 12, T6N, R1W, which bears S 0°02'04"E according to the Grant County Coordinate System as defined by the Wisconsin Department of Transportation and determined by GPS observation. Datum : NAD 1983 (1991) WISCONSIN

N 89°26'23"E  
POINT OF BEGINNING

Easement for ingress and egress

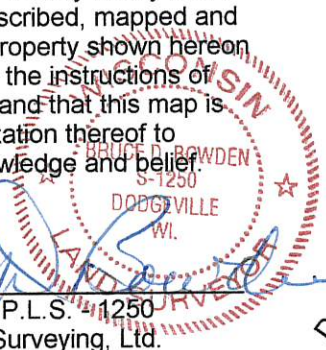
NE ¼ of the SE ¼

### SURVEYOR'S CERTIFICATE

I, Bruce D. Bowden, Professional Wisconsin Land Surveyor - 1250, agent of Bowden Surveying, Ltd., do hereby certify that I have surveyed, described, mapped and monumented the property shown hereon in accordance with the instructions of Mr. Chris Aultman and that this map is a correct representation thereof to the best of my knowledge and belief.

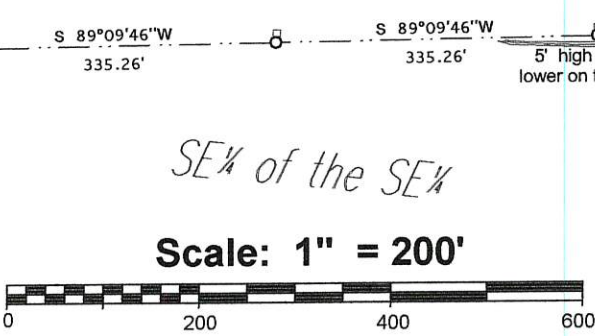
If this stamp is not red colored and the surveyor's signature is not in blue ink, the map should be assumed to be a copy and may contain unauthorized alterations. The certificate shown hereon shall not apply to any copies.

Bruce D. Bowden, P.L.S. 1250  
Agent of Bowden Surveying, Ltd.



December 7, 2007

10.21 Acres ±  
(444,946 sq. ft.)



SE ¼ of the SE ¼

**Bowden Surveying, Ltd.**  
619 W. Merrimac Street  
Dodgeville, WI 53533  
Phone (608)935-5513  
Job No. 30012B

SE corner, Section 12, T6N, R1W. all ties found

1324.76'  
2649.53'

S 0°02'04"E

W ¼ corner, Section 7, T6N, R1E.

(5 links) 3.30'

CENTERVILLE ROAD

N 0°45'59"W  
(N 0°19'55"W)  
(N 0°40'14"W)

CENTERVILLE ROAD

R1W (40.00 chains)  
474.15'  
448.33'  
2656.23'

(155,095 sq. ft.)

power pole

333.79'

N 89°46'04"E  
163.85'

N 42°12'44"E  
85.44'

N 89°20'31"E  
134.63'

N 5°31'41"W  
134.60'

S 65°53'31"E  
208.80'

N 67°12'40"E  
142.47'

N 62°12'48"E  
295.26'

S 89°09'46"W  
335.26'

N 0°04'18"W  
1326.38'

N 89°26'23"E  
336.11'

S 89°09'46"W  
335.26'

S 89°09'46"W  
335.26'

S 89°09'46"W  
335.26'

S 89°09'46"W  
335.26'

S 89°09'46"W  
335.26'

S 89°09'46"W  
335.26'

S 89°09'46"W  
335.26'

S 89°09'46"W  
335.26'

S 89°09'46"W  
335.26'

S 89°09'46"W  
335.26'

S 89°09'46"W  
335.26'

S 89°09'46"W  
335.26'

S 89°09'46"W  
335.26'

S 89°09'46"W  
335.26'

S 89°09'46"W  
335.26'

S 89°09'46"W  
335.26'

S 89°09'46"W  
335.26'

S 89°09'46"W  
335.26'

S 89°09'46"W  
335.26'

S 89°09'46"W  
335.26'

S 89°09'46"W  
335.26'

S 89°09'46"W  
335.26'

S 89°09'46"W  
335.26'

S 89°09'46"W  
335.26'

S 89°09'46"W  
335.26'

S 89°09'46"W  
335.26'

S 89°09'46"W  
335.26'

S 89°09'46"W  
335.26'

S 89°09'46"W  
335.26'

S 89°09'46"W  
335.26'

S 89°09'46"W  
335.26'

S 89°09'46"W  
335.26'

S 89°09'46"W  
335.26'

S 89°09'46"W  
335.26'

S 89°09'46"W  
335.26'

S 89°09'46"W  
335.26'

S 89°09'46"W  
335.26'

S 89°09'46"W  
335.26'

S 89°09'46"W  
335.26'

S 89°09'46"W  
335.26'

S 89°09'46"W  
335.26'

S 89°09'46"W  
335.26'

S 89°09'46"W  
335.26'

S 89°09'46"W  
335.26'

S 89°09'46"W  
335.26'

S 89°09'46"W  
335.26'

S 89°09'46"W  
335.26'

S 89°09'46"W  
335.26'

S 89°09'46"W  
335.26'

S 89°09'46"W  
335.26'

S 89°09'46"W  
335.26'

S 89°09'46"W  
335.26'

S 89°09'46"W  
335.26'

S 89°09'46"W  
335.26'

S 89°09'46"W  
335.26'

S 89°09'46"W  
335.26'

S 89°09'46"W  
335.26'

S 89°09'46"W  
335.26'

S 89°09'46"W  
335.26'

S 89°09'46"W  
335.26'

S 89°09'46"W  
335.26'

S 89°09'46"W  
335.26'

S 89°09'46"W  
335.26'

S 89°09'46"W  
335.26'

S 89°09'46"W  
335.26'

S 89°09'46"W  
335.26'

S 89°09'46"W  
335.26'

S 89°09'46"W  
335.26'

S 89°09'46"W  
335.26'

S 89°09'46"W  
335.26'

S 89°09'46"W  
335.26'

S 89°09'46"W  
335.26'

S 89°09'46"W  
335.26'

S 89°09'46"W  
335.26'

S 89°09'46"W  
335.26'

S 89°09'46"W  
335.26'

S 89°09'46"W  
335.26'

S 89°09'46"W  
335.26'

S 89°09'46"W  
335.26'

S 89°09'46"W  
335.26'

S 89°09'46"W  
335.26'

S 89°09'46"W  
335.26'

S 89°09'46"W  
335.26'

S 89°09'46"W  
335.26'

S 89°09'46"W  
335.26'

S 89°09'46"W  
335.26'

S 89°09'46"W  
335.26'

S 89°09'46"W  
335.26'

S 89°09'46"W  
335.26'

S 89°09'46"W  
335.26'

S 89°09'46"W  
335.26'

S 89°09'46"W  
335.26'

S 89°09'46"W  
335.26'

S 89°09'46"W  
335.26'

S 89°09'46"W  
335.26'

S 89°09'46"W  
335.26'

S 89°09'46"W  
335.26'

S 89°09'46"W  
335.26'

S 89°09'46"W  
335.26'

S 89°09'46"W  
335.26'

S 89°09'46"W  
335.26'

S 89°09'46"W  
335.26'

S 89°09'46"W  
335.26'

S 89°09'46"W  
335.26'

S 89°09'46"W  
335.26'

S 89°09'46"W  
335.26'

S 89°09'46"W  
335.26'

S 89°09'46"W  
335.26'

S 89°09'46"W  
335.26'

S 89°09'46"W  
335.26'

S 89°09'46"W  
335.26'

S 89°09'46"W  
335.26'

S 89°09'46"W  
335.26'

S 89°09'46"W  
335.26'

S 89°09'46"W  
335.26'

S 89°09'46"W  
335.26'

S 89°09'46"W  
335.26'

S 89°09'46"W  
335.26'

S 89°09'46"W  
335.26'

S 89°09'46"W  
335.26'

S 89°09'46"W  
335.26'

S 89°09'46"W  
335.26'

S 89°09'46"W  
335.26'

S 89°09'46"W  
335.26'

S 89°09'46"W  
335.26'

S 89°09'46"W  
335.26'

S 89°09'46"W  
335.26'

S 89°09'46"W  
335.26'

S 89°09'46"W  
335.26'

S 89°09'46"W  
335.26'

S 89°09'46"W  
335.26'

S 89°09'46"W  
335.26'

S 89°09'46"W  
335.26'

S 89°09'46"W  
335.26'

S 89°09'46"W  
335.26'

S 89°09'46"W  
335.26'

S 89°09'46"W  
335.26'

S 89°09'46"W  
335.26'

S 89°09'46"W  
335.26'

S 89°09'46"W  
335.26'

S 89°09'46"W  
335.26'

S 89°09'46"W  
335.26'

S 89°09'46"W  
335.26'

S 89°09'46"W  
335.26'

S 89°09'46"W  
335.26'

S 89°09'46"W  
335.26'

S 89°09'46"W  
335.26'

S 89°09'46"W  
335.26'

S 89°09'46"W  
335.26'

S 89°09'46"W  
335.26'

S 89°09'46"W  
335.26'

S 89°09'46"W  
335.26'

S 89°09'46"W  
335.26'

S 89°09'46"W  
335.26'

S 89°09'46"W  
335.26'

S 89°09'46"W  
335.26'

S 89°09'46"W  
335.26'

S 89°09'46"W  
335.26'

S 89°09'46"W  
335.26'

S 89°09'46"W  
335.26'

S 89°09'46"W  
335.26'

S 89°09'46"W  
335.26'

S 89°09'46"W  
335.26'

S 89°09'46"W  
335.26'

S 89°09'46"W  
335.26'

S 89°09'46"W  
335.26'

S 89°09'46"W  
335.26'

S 89°09'46"W  
335.26'

S 89°09'46"W  
335.26'

S 89°09'46"W  
335.26'

S 89°09'46"W  
335.26'

S 89°09'46"W  
335.26'

S 89°09'46"W  
335.26'

S 89°09'46"W  
335.26'

S 89°09'46"W  
335.26'

S 89°09'46"W  
335.26'