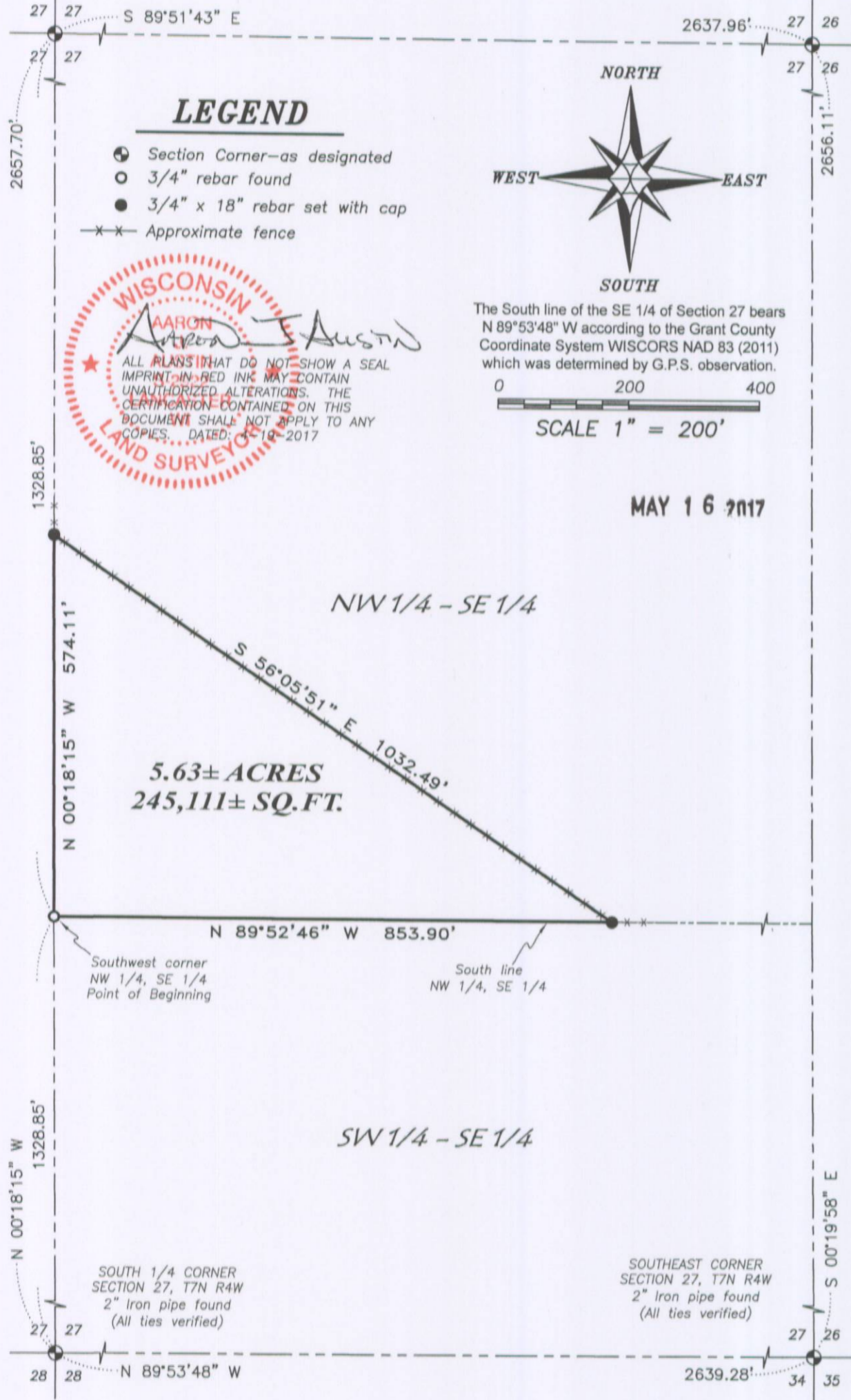


PLAT OF SURVEY

CENTER SECTION 27
1" rebar found with Grant
County Aluminum Cap
(All ties verified)

EAST 1/4 CORNER
SECTION 27, T7N R4W
1" rebar found with Grant
County Aluminum Cap
(All ties verified)



The South line of the SE 1/4 of Section 27 bears N 89°53'48" W according to the Grant County Coordinate System WISCORS NAD 83 (2011) which was determined by G.P.S. observation.

0 200 400

SCALE 1" = 200'

MAY 16 2017

5.63± ACRES
245,111± SQ.FT.

NW 1/4 - SE 1/4

SW 1/4 - SE 1/4

MAY 16 2017



Austin Engineering LLC
austinengineeringllc.com

Prepared for: TOM FRIAR

JOB NO: 17s041
H:\CRD\17s041
H:\PLAT\T7NR4W\27\17s041-FRIAR

FIELDBOOK: TDSR
DRAWN BY: AJ AUSTIN
CREW: SHANE AUSTIN

SHEET 1 OF 2

4211 HWY 81 E, LANCASTER, WI 53813
PHONE: 608-723-6363 FAX: 608-723-6702

Austin Engineering LLC
austinengineeringllc.com

Prepared for: TOM FRIAR

JOB NO: 17s041
H:\CRD\17s041
H:\PLAT\T7NR4W\27\17s041-FRIAR

FIELDBOOK: TDSR
DRAWN BY: AJ AUSTIN
CREW: SHANE AUSTIN

SHEET 2 OF 2

4211 HWY 81 E, LANCASTER, WI 53813
PHONE: 608-723-6363 FAX: 608-723-6702

PLAT OF SURVEY