

NOV 10 2016

Book 39 PAGE 51

Plat of Survey for Badger State Chapter of the Lewis & Clark Trail Heritage Foundation

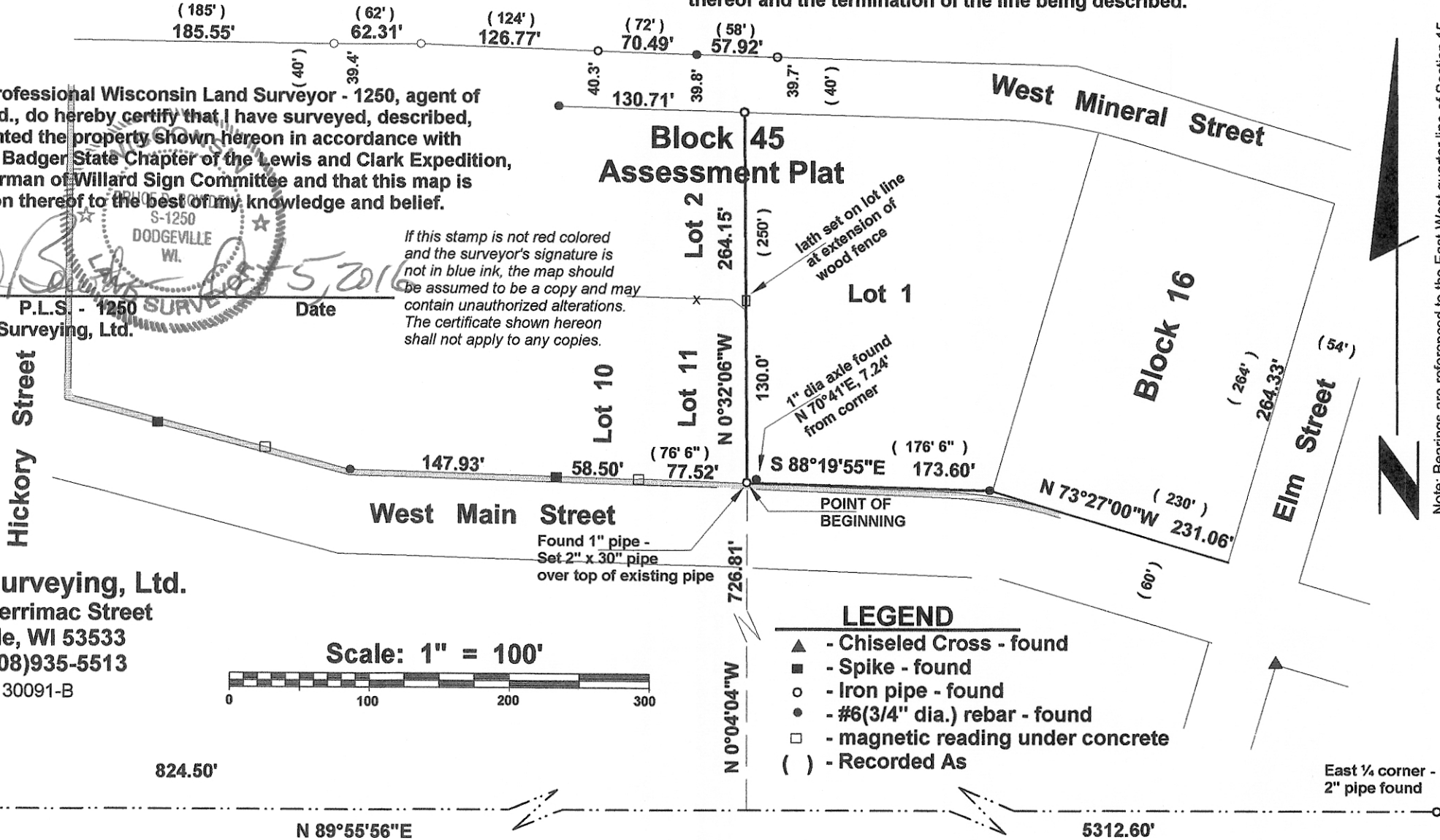
Part of the Southwest 1/4 of the Northwest 1/4 of Section 15, Town 3 North, Range 1 West, Coity of Platteville, Grant County, Wisconsin, described as:

commencing at the Southwest corner of the said Northwest 1/4; thence N 89°55'56"E along the South line thereof, 824.50'; thence N 0°04'04"W, 726.81' to the Southwest corner of Lot 1 of Block 45 of the Assessment Plat being the Point of Beginning; thence N 0°32'06"W along the West line thereof, 264.15' to the Northwest corner thereof and the termination of the line being described.

I, Bruce D. Bowden, Professional Wisconsin Land Surveyor - 1250, agent of Bowden Surveying, Ltd., do hereby certify that I have surveyed, described, mapped and monumented the property shown hereon in accordance with the instructions of the Badger State Chapter of the Lewis and Clark Expedition, Mr. Tom Strauss -Chairman of Willard Sign Committee and that this map is a correct representation thereof to the best of my knowledge and belief.

Bruce D. Bowden
S-1250
DODGEVILLE
WI.
Date: 11/5/2016
Bruce D. Bowden, P.L.S. - 1250
Agent of Bowden Surveying, Ltd.

If this stamp is not red colored and the surveyor's signature is not in blue ink, the map should be assumed to be a copy and may contain unauthorized alterations. The certificate shown hereon shall not apply to any copies.



Note: Bearings are referenced to the East-West quarter line of Section 15, T 3 N, R 1 W, which bears N 89°55'56"E according to the Grant County Coordinate System as defined by the Wisconsin Department of Transportation and determined by GPS observation. Datum WGS 1983(2011) WISCONSIN.

Bowden Surveying, Ltd.
619 W. Merrimac Street
Dodgeville, WI 53533
Phone (608)935-5513
Job No. 30091-B

West 1/4 corner
chiseled cross -
all ties found

824.50'

N 89°55'56"E

N 0°04'04"W

726.81'

N 0°32'06"W

264.15'

(185')
185.55'

(62')
62.31'

(124')
126.77'

(72')
70.49'

(58')
57.92'

(40')
39.7'

(40')
39.8'

(40')
40.3'

(250')

130.71'

130.0'

(176' 6")
173.60'

(176' 6")
77.52'

(76' 6")
58.50'

(230')

(264')

(54')

(60')

(264.33')

(54')

(231.06')

(230')

(264.33')

(54')

(231.06')

(230')

(264.33')

(54')

(231.06')

(230')

(264.33')

(54')

(231.06')

(230')

(264.33')

(54')

(231.06')

(230')

(264.33')

(54')

(231.06')

(230')

(264.33')

(54')

(231.06')

(230')

(264.33')

(54')

(231.06')

(230')

(264.33')

(54')

(231.06')

(230')

(264.33')

(54')

(231.06')

(230')

(264.33')

(54')

(231.06')

(230')

(264.33')

(54')

(231.06')

(230')

(264.33')

(54')

(231.06')

(230')

(264.33')

(54')

(231.06')

(230')

(264.33')

(54')

(231.06')

(230')

(264.33')

(54')

(231.06')

(230')

(264.33')

(54')

(231.06')

(230')

(264.33')

(54')

(231.06')

(230')

(264.33')

(54')

(231.06')

(230')

(264.33')

(54')

(231.06')

(230')

(264.33')

(54')

(231.06')

(230')

(264.33')

(54')

(231.06')

(230')

(264.33')

(54')

(231.06')

(230')

(264.33')

(54')

(231.06')

(230')

(264.33')

(54')

(231.06')

(230')

(264.33')

(54')

(231.06')

(230')

(264.33')

(54')

(231.06')

(230')

(264.33')

(54')

(231.06')

(230')

(264.33')

(54')

(231.06')

(230')

(264.33')

(54')

(231.06')

(230')

(264.33')

(54')

(231.06')

(230')

(264.33')

(54')

(231.06')

(230')

(264.33')

(54')

(231.06')

(230')

(264.33')

(54')

(231.06')

(230')

(264.33')

(54')

(231.06')

(230')

(264.33')

(54')

(231.06')

(230')

(264.33')

(54')

(231.06')

(230')

(264.33')

(54')

(231.06')

(230')

(264.33')

(54')

(231.06')

(230')

(264.33')

(54')

(231.06')

(230')

(264.33')

(54')

(231.06')

(230')

(264.33')

(54')

(231.06')

(230')

(264.33')

(54')

(231.06')

(230')

(264.33')

(54')

(231.06')

(230')

(264.33')

(54')

(231.06')

(230')

(264.33')

(54')

(231.06')

(230')

(264.33')

(54')

(231.06')

(230')

(264.33')

(54')

(231.06')

(230')

(264.33')

(54')

(231.06')

(230')

(264.33')

(54')

(231.06')

(230')

(264.33')

(54')

(231.06')

(230')

(264.33')

(54')

(231.06')

(230')

(264.33')

(54')

(231.06')

(230')

(264.33')

(54')

(231.06')

(230')

(264.33')

(54')

(231.06')

(230')

(264.33')

(54')

(231.06')

(230')

(264.33')

(54')

(231.06')

(230')

(264.33')

(54')

(231.06')

(230')

(264.33')

(54')

(231.06')

(230')

(264.33')

(54')

(231.06')

(230')

(264.33')

(54')

(231.06')

(230')

(264.33')

(54')

(231.06')

(230')

(264.33')

(54')

(231.06')

(230')

(264.33')

(54')

(231.06')

(230')

(264.33')

(54')

(231.06')

(230')

(264.33')

(54')

(231.06')

(230')

(264.33')

(54')

(231.06')

(230')

(264.33')

(54')

(231.06')

(230')

(264.33')

(54')

(231.06')

(230')

(264.33')

(54')

(231.06')

(230')

(264.33')

(54')

(231.06')

(230')

(264.33')