

LEGEND

- These standard symbols will be found in the drawings.
- SANITARY SEWER
- STORM SEWER
- OVERHEAD UTILITIES
- BURIED ELECTRIC
- BURIED GAS
- BURIED TELEPHONE
- WATERMAIN
- FENCE LINE
- EDGE OF BITUMINOUS
- CONTOUR LINE
- RECTANGULAR CATCH BASIN
- CIRCULAR CATCH BASIN
- STORM MANHOLE
- SANITARY MANHOLE
- UTILITY MANHOLE
- WATER MANHOLE
- SHOULDER
- WATER SERVICE
- WATER VALVE
- HYDRANT
- ELECTRIC METER
- ELECTRIC TRANSFORMER
- ELECTRIC BOX
- LIGHTPOLE
- POWERSPOLE
- FLOOD LIGHT
- GUY WIRE
- TELEPHONE BOX
- TELEPHONE PERESTAL
- FIBER OPTIC VAULT
- FLOWER POT
- GUANO POST
- CLEAN OUT
- AIR CONDITIONING UNIT
- SIGN
- FLAGPOLE
- ROOF DRAIN
- GREASE PIT COVER
- BRASS DISC IN CONCRETE
- 3/4" O.D. IRON BAR SET IN CONCRETE
- LANCASTER GPS MONUMENT
- 3/4" O.D. IRON BAR FOUND
- BENTEN NAIL FOUND
- BUSH/SHRUB
- TREE
- PINE TREE

DESCRIPTION

LOCATED IN THE NORTHEAST 1/4 OF THE NORTHEAST 1/4 OF SECTION 14, TOWNSHIP 4 NORTH, RANGE 3 WEST, COUNTY OF SOUTHWESTERN WISCONSIN.

UNDERGROUND UTILITIES

THESE RECORD DRAWINGS HAVE BEEN PREPARED, IN PART, ON THE BASIS OF INFORMATION COMPILED AND FURNISHED BY OTHERS. THE SURVEYOR HAS MADE A REASONABLE ATTEMPT TO VERIFY THE ACCURACY OF SUCH INFORMATION AND HAS INCORPORATED INTO THIS DOCUMENT AS A RESULT. SOME UTILITIES HAVE BEEN LOCATED BY MAPS PROVIDED BY OTHERS - LOCATIONS ARE APPROXIMATE. PRIVATE UTILITIES MAY EXIST BUT ARE NOT SHOWN ON MAP. CONTACT DIGERS HOTLINE FOR LOCATIONS AND LOCATION.

UNDERGROUND UTILITIES SHOWN ON THIS MAP ARE UNLESS OTHERWISE NOTED BY DOTTED LINES. (SHEET #2014409223)

BENCH MARK

ELEVATIONS ARE REFERENCED TO NAVD 88 DATUM.

BENCHMARK #1
NGS MONUMENT "LANCASTER GPS" LOCATED ON THE EAST SIDE OF HWY 129 NORTH OF ENTRANCE TO ELEVATION = 1087.22

BENCHMARK #2
SET ON SOUTH SIDE OF POWER POLE LOCATED ON SOUTH SIDE OF "WHITE" CONCRETE BUILDING NEAR THE NORTHWEST CORNER OF SURVEY LOTS. ELEVATION = 1087.45

BENCHMARK #3
ABOUT ON HYPHANT NEAR NORTHEAST CORNER OF "SOCAL SERVICES" BUILDING ON THE SOUTH SIDE OF PARKING LOT. ELEVATION = 1089.19

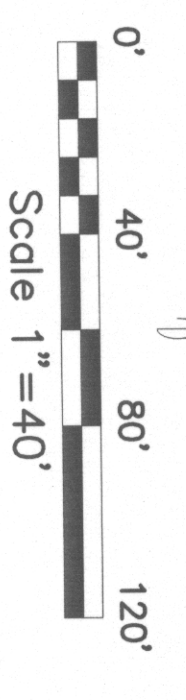
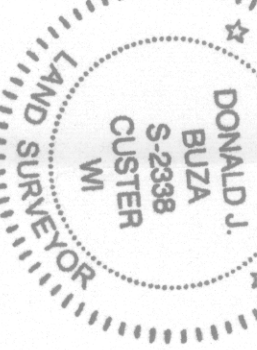
BENCHMARK #4
CONCRETE "TOT BI" LOCATED ON EAST SIDE OF ENTRANCE FRONTAGE ROAD NORTH OF INTERSECTION TO PARKING LOT TO THE EAST. ELEVATION = 1092.40

BENCHMARK #5
AGE BOLT ON HYPHANT LOCATED NEAR THE NORTHEAST CORNER OF "ORCHARD MANOR" BUILDING. SENIOR HOUSING. ELEVATION = 1092.48

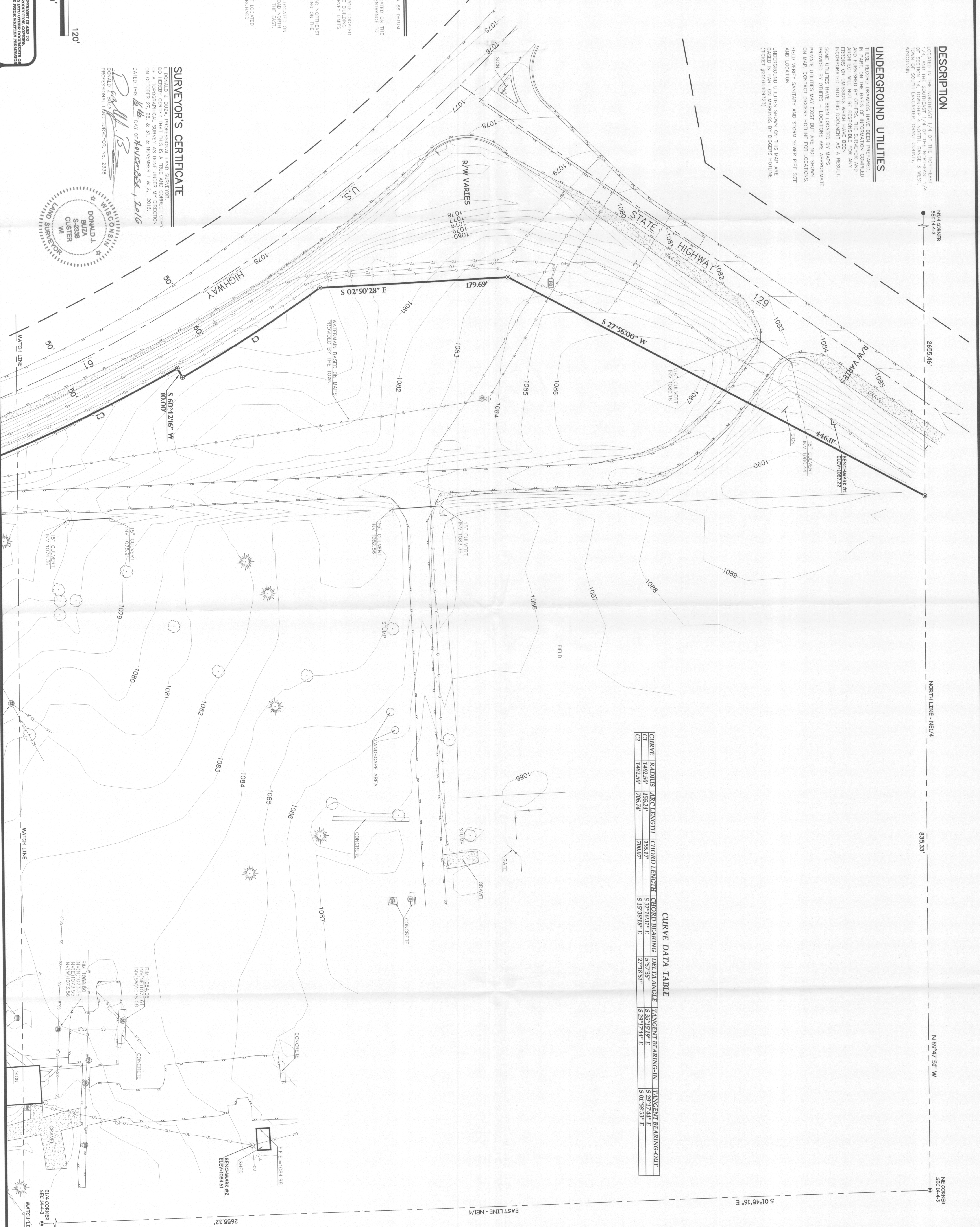
SURVEYOR'S CERTIFICATE

DONALD J. BIZZA, PROFESSIONAL LAND SURVEYOR, DO HEREBY CERTIFY THAT THIS IS A TRUE AND CORRECT COPY OF A TOPOGRAPHICAL SURVEY AS DONE UNDER MY SUPERVISION ON OCTOBER 27, 2016, & 31, & NOVEMBER 16, 2016, DATED THIS 16th DAY OF NOVEMBER, 2016.

Donald J. Bizza
Professional Land Surveyor, No. 2338



POINT OF BEGINNING: THE POINT OF BEGINNING IS LOCATED AT THE INTERSECTION OF THE CENTERLINE OF THE EAST-WEST ALLEYWAY, AND THE CENTERLINE OF THE NORTH-SOUTH ALLEYWAY, AND IS IDENTIFIED BY A BRASS DISC IN CONCRETE. THE POINT OF BEGINNING IS IDENTIFIED BY A BRASS DISC IN CONCRETE. THE POINT OF BEGINNING IS IDENTIFIED BY A BRASS DISC IN CONCRETE.



CURVE DATA TABLE

CURVE	RADIUS	ARC LENGTH	CHORD LENGTH	CHORD BEARING	DELTA ANGLE	TANGENT BEARING-IN	TANGENT BEARING-OUT
C1	1492.50'	155.24'	153.17'	S 32°16'31" E	5°57'35"	S 87°51'19" E	S 29°17'24" E
C2	1482.50'	706.74'	700.07'	S 15°58'18" E	12°18'59"	S 29°17'24" E	S 01°58'53" E

N/4 CORNER SEC 14-3

NORTH LINE - NE 1/4

839.33'

N 89°47'51" W

E/4 CORNER SEC 14-3

Book 39 Page 34

Civil Engineering
Land Surveying
Landscape Architecture

5709 Windy Drive, Suite D
Stevens Point, WI 54482
715.344.9999(Ph) 715.344.9922(Fx)

**GRANT COUNTY
ORCHARD MANOR
TOWN OF SOUTH LANCASTER
GRANT COUNTY, WISCONSIN**

TOPOGRAPHIC MAP

CHECKED: DONALD J. BIZZA
DRAWN: TRAVIS OLDS
DATE: NOVEMBER 4, 2016
PROJECT NO.: 16.580

