

- ### LEGEND
- These standard symbols will be found in the drawing.
- SANITARY SEWER
  - STORM SEWER
  - OVERHEAD UTILITIES
  - BURIED ELECTRIC
  - BURIED GAS
  - BURIED TELEPHONE
  - WATERMAIN
  - FIBER OPTICS
  - EDGE OF BIOMASS
  - CONTIGUOUS LINE
  - RECTANGULAR CATCH BASIN
  - CIRCULAR CATCH BASIN
  - STORM MANHOLE
  - SANITARY MANHOLE
  - UTILITY MANHOLE
  - WATER MANHOLE
  - SPOUT
  - WATER SERVICE
  - WATER VALVE
  - HYDRANT
  - ELECTRIC METER
  - ELECTRIC TRANSFORMER
  - ELECTRIC BOX
  - LIGHT POLE
  - POWER POLE
  - FLOOD LIGHT
  - GUY WIRE
  - TELEPHONE BOX
  - TELEPHONE POSTAL
  - FIBER OPTIC VAULT
  - FLOWER POT
  - GROUND POST
  - CLEAN OUT
  - AIR CONDITIONING UNIT
  - SIGN
  - FLAGPOLE
  - ROOF DRAIN
  - GREASE PIT COVER
  - BRASS DISC IN CONCRETE
  - 3/4" O.D. X 1/8" I.D. IRON BAR SET
  - WEIGHING 150 LBS/3/4" I.D. I.R. MONUMENT
  - 3/4" O.D. IRON BAR FOUND
  - BERTINSEN NAIL FOUND
  - BUSH/SHRUB
  - TREE
  - PINE TREE

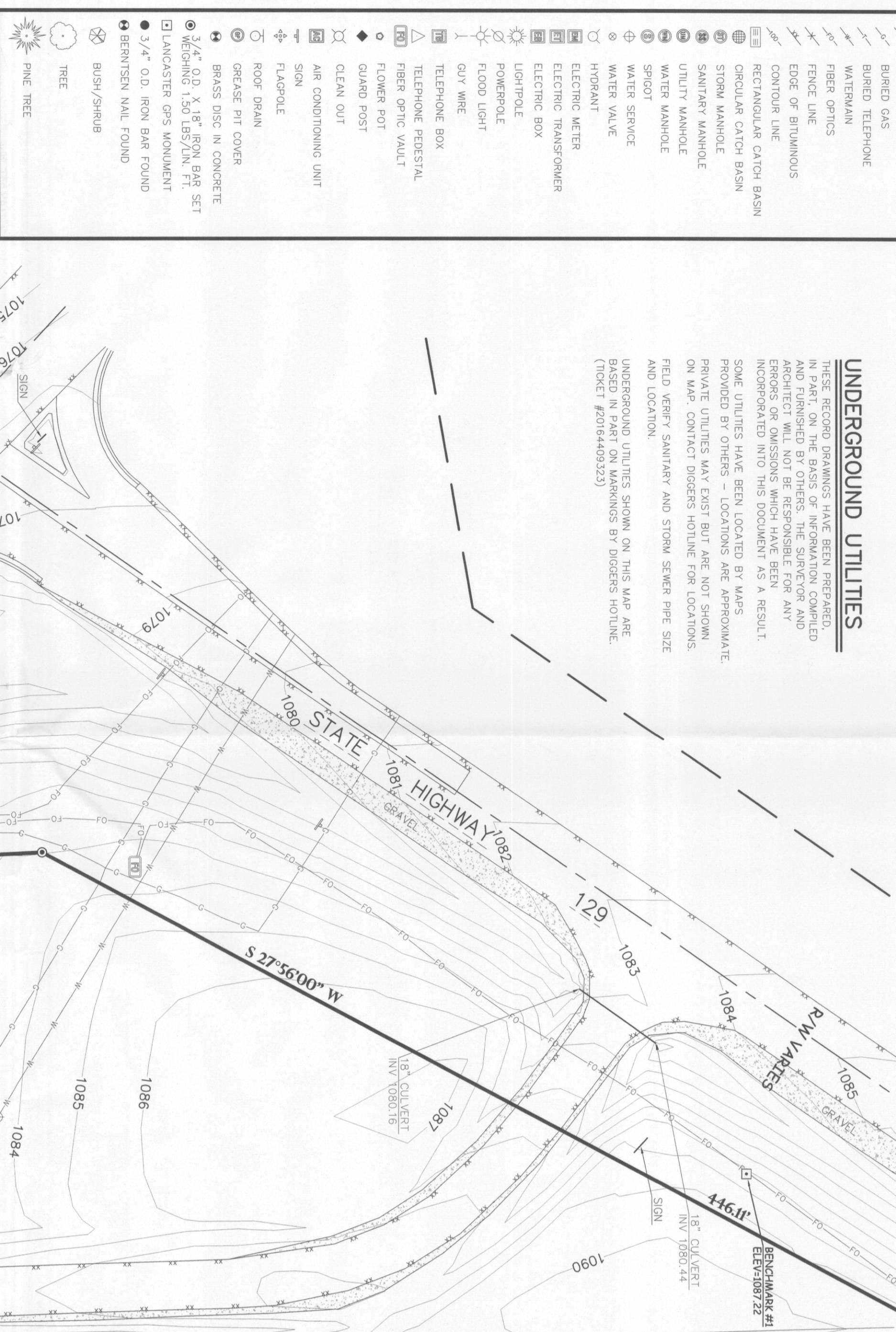
### DESCRIPTION

LOCATED IN THE NORTHEAST 1/4 OF THE NORTHEAST 1/4 AND THE SOUTHWEST 1/4 OF THE NORTHEAST 1/4 TOWN OF SOUTH LANCASTER, GRANT COUNTY, WISCONSIN.

### UNDERGROUND UTILITIES

THESE RECORD DRAWINGS HAVE BEEN PREPARED IN PART ON THE BASIS OF INFORMATION OBTAINED FROM THE RECORD DRAWINGS OF THE ARCHITECT WILL NOT BE RESPONSIBLE FOR ANY ERRORS OR OMISSIONS WHICH HAVE BEEN INCORPORATED INTO THIS DOCUMENT AS A RESULT. SOME UTILITIES HAVE BEEN LOCATED BY MAPS PROVIDED BY OTHERS - LOCATIONS ARE APPROXIMATE. PRIVATE UTILITIES MAY EXIST BUT ARE NOT SHOWN ON MAP. CONTACT DIGGERS HOTLINE FOR LOCATIONS. FIELD VERIFY SANITARY AND STORM SEWER PIPE SIZE AND LOCATION.

UNDERGROUND UTILITIES SHOWN ON THIS MAP ARE BASED IN PART ON MARKINGS BY DIGGERS HOTLINE (TICKET #20164409323)



### CURVE DATA TABLE

CURVE	RADIUS	ARC LENGTH	CHORD LENGTH	CHORD BEARING	DELTA ANGLE	TANGENT BEARING-IN	TANGENT BEARING-OUT
C1	1482.50'	155.24'	155.17'	S 32°46'31\" E	5°57'35\"	S 38°51'09\" E	S 29°7'44\" E
C2	1482.50'	706.74'	700.07'	S 15°38'18\" E	27°58'59\"	S 29°7'44\" E	S 01°58'53\" E

### BENCH MARK

MEASUREMENTS ARE REFERENCED TO WVD 88 DATUM.

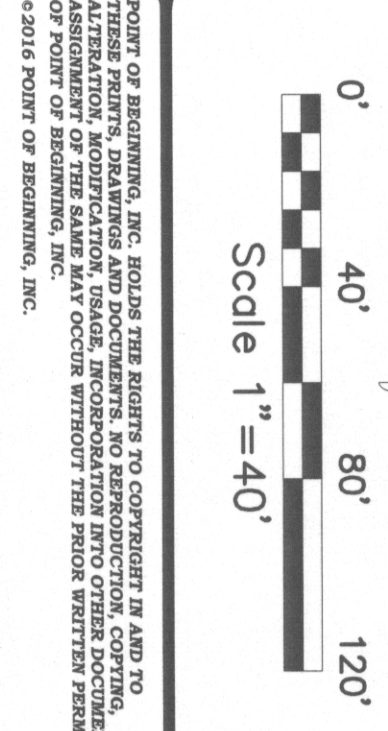
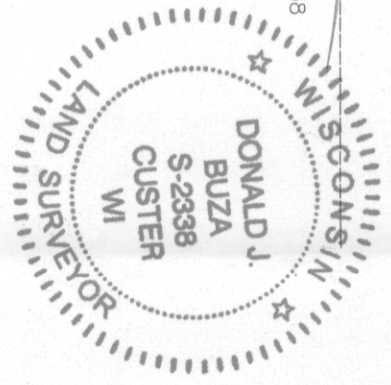
BENCHMARK #1 BRASS DISC IN CONCRETE LOCATED ON THE EAST SIDE OF HWY 129 NORTH 1/2 OF ENTRANCE TO PROPERTY. ELEVATION = 1087.22

BENCHMARK #2 3/4\"/>

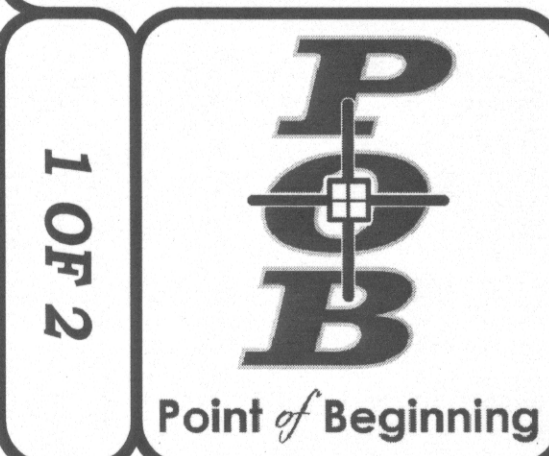
### SURVEYOR'S CERTIFICATE

I, DONALD J. BUZA, PROFESSIONAL LAND SURVEYOR, DO HEREBY CERTIFY THAT I AM THE AUTHOR OF THIS SURVEY AND THAT I AM A MEMBER IN GOOD STANDING OF THE BOARD OF PROFESSIONAL LAND SURVEYORS OF THE STATE OF WISCONSIN. THIS SURVEY WAS COMPLETED ON OCTOBER 27, 28, & 31, & NOVEMBER 1 & 2, 2016.

DATED THIS 16th DAY OF NOVEMBER, 2016.



POINT OF BEGINNING, INC. MAKES THE RECORD TO CORRECT IN ANY TO ALTERNATE, MODIFICATION, REVISION, OR SUPPLEMENT TO THIS RECORD DRAWING. THE RECORD DRAWING IS THE PROPERTY OF POINT OF BEGINNING, INC. © 2016 POINT OF BEGINNING, INC.



Box 39 Page 33

Civil Engineering  
Land Surveying  
Landscape Architecture

5709 Windy Drive, Suite D  
Stevens Point, WI 54482  
715.344.9999(Ph) 715.344.9922(Fx)

GRANT COUNTY  
ORCHARD MANOR  
TOWN OF SOUTH LANCASTER  
GRANT COUNTY, WISCONSIN

TOPOGRAPHIC MAP

CHECKED:	DATE:
DONALD J. BUZA	NOVEMBER 4, 2016
TRAVIS OLDS	
PROJECT NO. 16-500	

**LEGEND**

- These standard symbols will be found in this drawing
- SANITARY SEWER
  - OVERHEAD UTILITIES
  - BURIED ELECTRIC
  - BURIED GAS
  - WATERMAN
  - FIBER OPTICS
  - FENCE LINE
  - EDGE OF BITUMINOUS
  - CONTOUR LINE
  - RECTANGULAR CATCH BASIN
  - CIRCULAR CATCH BASIN
  - STUMP MARK
  - SANITARY MANHOLE
  - UTILITY MANHOLE
  - WATER MANHOLE
  - SPOOL SERVICE
  - WATER VALVE
  - HYDRANT
  - ELECTRIC METER
  - ELECTRIC TRANSFORMER
  - ELECTRIC BOX
  - LIGHTPOLE
  - POWERPOLE
  - FLOOD LIGHT
  - GUY WIRE
  - TELEPHONE BOX
  - TELEPHONE FEDESTAL
  - FLOWER POST
  - GUARD POST
  - CLEAN OUT
  - AIR CONDITIONING UNIT
  - SIGN
  - FLAGPOLE
  - ROOF DRAIN
  - GREASE PIT COVER
  - BRASS DISC IN CONCRETE
  - 1/2" O.D. IRON BAR SET
  - 1/2" O.D. IRON BAR SET
  - LANCASTER GPS MONUMENT
  - 3/4" O.D. IRON BAR FOUND
  - BERNITSEN NAIL FOUND
  - BUSH/SHRUB
  - PINE TREE

**DESCRIPTION**

LOCATED IN THE NORTHEAST 1/4 OF THE NORTHEAST 1/4 OF SECTION 14, TOWNSHIP 4 NORTH, RANGE 3 WEST, 10TH OF SOUTH LANCASTER, GRANT COUNTY, WISCONSIN.

**UNDERGROUND UTILITIES**

THESE RECORD DRAWINGS HAVE BEEN PREPARED, IN PART, ON THE BASIS OF INFORMATION COMPILED BY ARCHITECTS AND ENGINEERS. THE ARCHITECTS AND ENGINEERS WILL NOT BE RESPONSIBLE FOR ANY ERRORS OR OMISSIONS WHICH HAVE BEEN INCORPORATED INTO THIS DOCUMENT AS A RESULT. SOME UTILITIES HAVE BEEN LOCATED BY MAPS PROVIDED BY OTHERS - LOCATIONS ARE APPROXIMATE. PRIVATE UTILITIES MAY EXIST BUT ARE NOT SHOWN ON MAP. CONTACT DIGGERS HOTLINE FOR LOCATIONS, FIELD VERIFY SANITARY AND STORM SEWER PIPE SIZE AND LOCATION.

UNDERGROUND UTILITIES SHOWN ON THIS MAP ARE BASED IN PART ON MARKINGS BY DIGGERS HOTLINE (TICKET #20164409323)

**BENCH MARK**

ELEVATIONS ARE REFERENCED TO NAVD 83 DATUM.

BENCHMARK #1  
NEIS MONUMENT "LANCASTER GPS" LOCATED ON THE EAST SIDE OF HWY 129 "NORTH" OF ENTRANCE TO ELEVATION = 1087.22

BENCHMARK #2  
600 SET ON SOUTH SIDE OF POWER POLE LOCATED ON SOUTH SIDE OF "WHITE" CONCRETE BUILDING ELEVATION = 1084.61

BENCHMARK #3  
NIGHT FLANGE BOLT ON HOBSPANT NEAR NORTHEAST CORNER OF "SOCIAL SERVICES" BUILDING ON THE EAST SIDE OF PARKING LOT.

BENCHMARK #4  
CONCRETE "TOT BAIT" LOCATED ON EAST SIDE OF ENTRANCE FROVAGE ROAD NORTH OF INTERSECTION TO PARKING LOT TO THE EAST. ELEVATION = 1089.80

BENCHMARK #5  
BENCH BOLT ON HYDRANT LOCATED NEAR THE NORTHEAST CORNER OF "ORCHARD MANOR" BUILDING. SENIOR HOUSING. ELEVATION = 1082.49

**SURVEYOR'S CERTIFICATE**

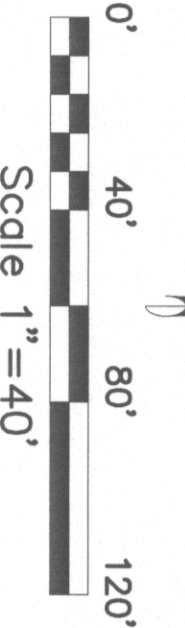
I, DONALD J. BILZA, PROFESSIONAL LAND SURVEYOR, DO HEREBY CERTIFY THAT THIS IS A TRUE AND CORRECT COPY OF A TOPOGRAPHICAL SURVEY AS DONE UNDER MY DIRECTION ON OCTOBER 27, 28, & 31, & NOVEMBER 1 & 2, 2016.

DATED THIS 16th DAY OF NOVEMBER, 2016

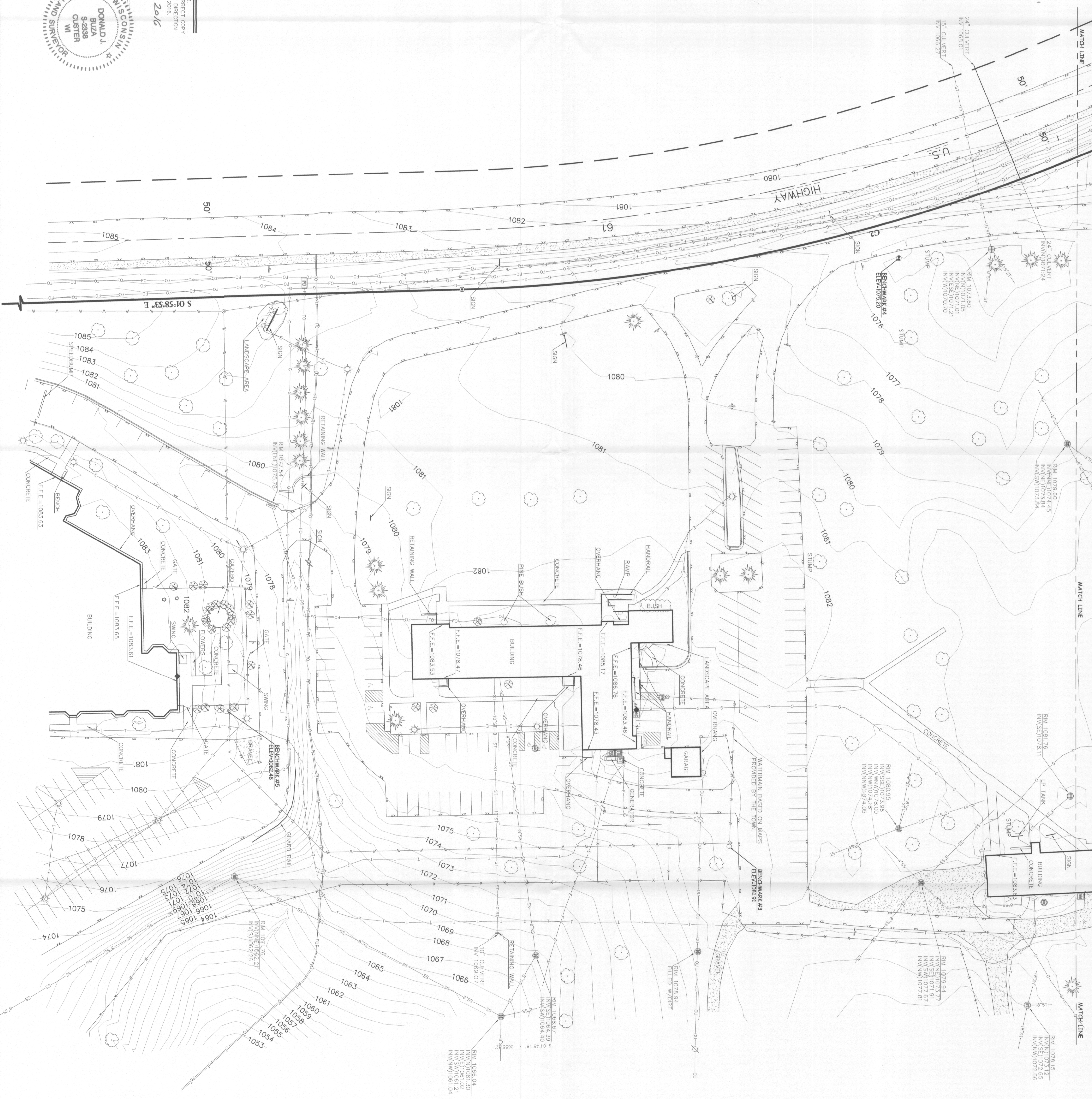
*Donald J. Bilza*  
DONALD J. BILZA  
S-2398  
CLUSTER  
WI  
LAND SURVEYOR

WISCONSIN  
DONALD J. BILZA  
S-2398  
CLUSTER  
WI  
LAND SURVEYOR

EDWARD J. KATYLA  
PROFESSIONAL LAND SURVEYOR, No. 2338



THIS DOCUMENT IS THE PROPERTY OF POINT OF BEGINNING, INC. IT IS TO BE USED ONLY FOR THE PROJECT AND SITE SPECIFICALLY IDENTIFIED HEREIN. ANY REUSE OR REPRODUCTION OF THIS DOCUMENT WITHOUT THE WRITTEN PERMISSION OF POINT OF BEGINNING, INC. IS STRICTLY PROHIBITED.



**POB**  
Point of Beginning

2 OF 2

Civil Engineering  
Land Surveying  
Landscape Architecture

5709 Windy Drive, Suite D  
Stevens Point, WI 54482  
715.344.9999(Ph) 715.344.9922(Fx)

**GRANT COUNTY  
ORCHARD MANOR  
TOWN OF SOUTH LANCASTER  
GRANT COUNTY, WISCONSIN**

**TOPOGRAPHIC MAP**

CHECKED:	DONALD J. BILZA
DRAWN:	TRAVIS GIBBS
DATE:	NOVEMBER 4, 2016
PROJECT NO.:	16-000