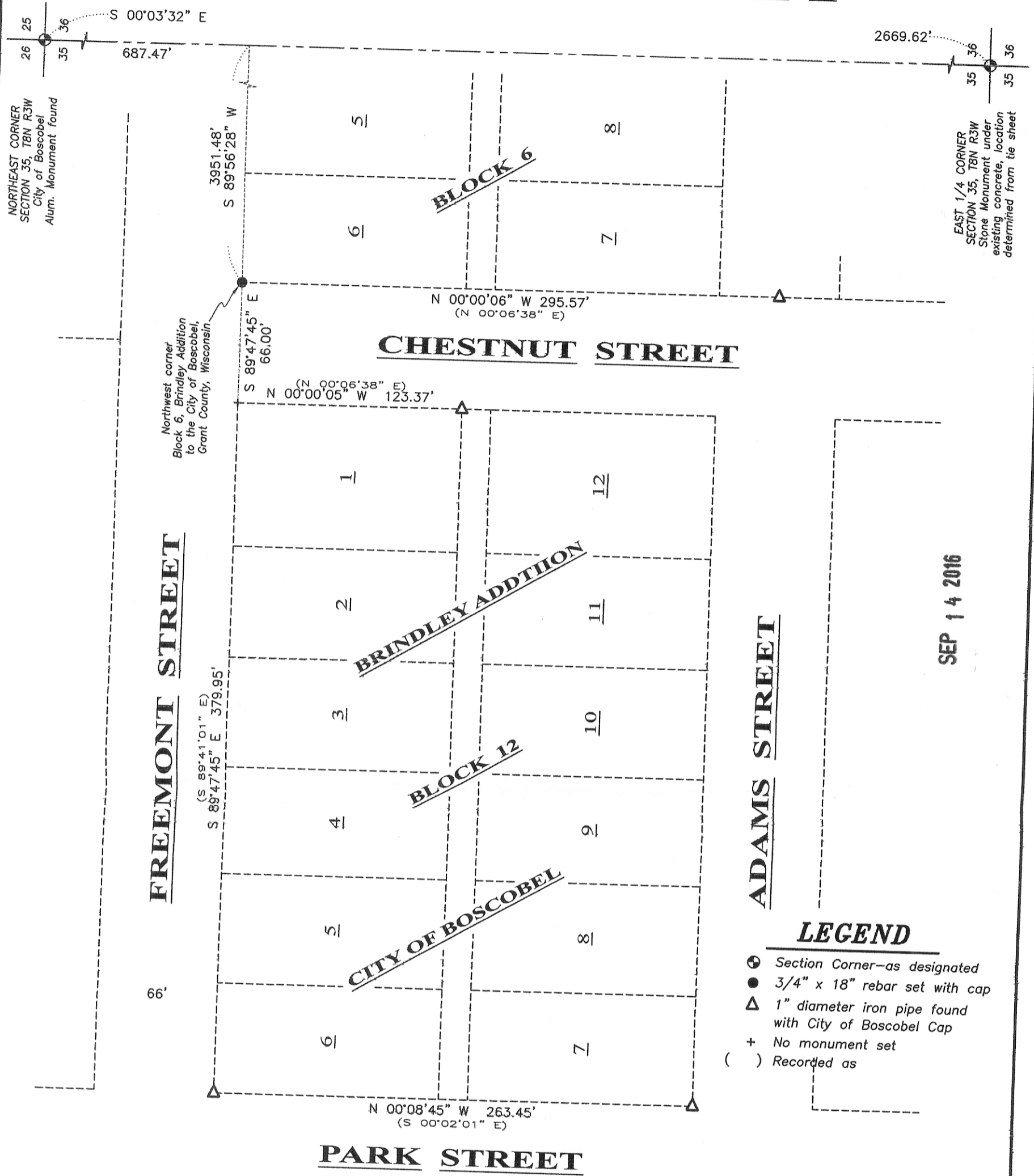


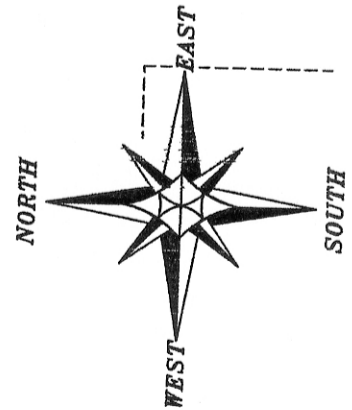
PLAT OF SURVEY



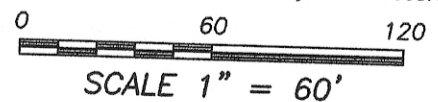
SEP 14 2016

LEGEND

- ⊙ Section Corner—as designated
- 3/4" x 18" rebar set with cap
- △ 1" diameter iron pipe found with City of Boscobel Cap
- + No monument set
- () Recorded as



The East line of the NE 1/4 of Section 35 bears S 00°03'32" E according to the Grant County Coordinate System WISCORS NAD83(2011) which was determined by G.P.S. observation.

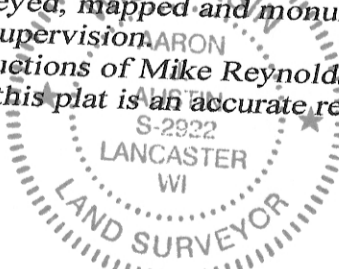


SURVEYOR'S CERTIFICATE:

I, Aaron J. Austin, Professional Wisconsin Land Surveyor, hereby certify:
 That the Northwest corner of Lot 6 of Block 6, Brindley's Addition to the City of Boscobel, Grant County, Wisconsin was surveyed, mapped and monumented as shown on this plat by me or under my direct supervision.
 That this survey was prepared under the instructions of Mike Reynolds.
 That to the best of my knowledge and belief, this plat is an accurate representation thereof.

Dated this 16th day of August, 2016.

Aaron J. Austin
 Aaron J. Austin, S-2922



All plans that do not show a seal imprint in red ink may contain unauthorized alterations.
 The certification contained on this document shall not apply to any copies.

Prepared for: CITY OF BOSCOBEL

Austin Engineering LLC
 austinengineeringllc.com
 4211 HWY 81 E, LANCASTER, WI 53813
 PHONE: 608-723-6363 FAX: 608-723-6702

JOB NO: 16s120
 H:CRD\16s120
 H:PLAT\BOSCOBEL\BRINDLEYS\16s120-BOSCOBEL

FIELDBOOK: TDSR
 DRAWN BY: AJ AUSTIN
 CREW: SW AUSTIN, OJ AUSTIN