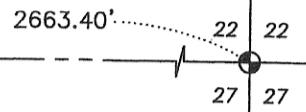
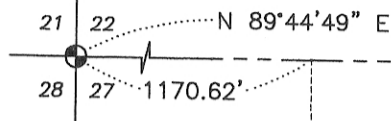


PLAT OF SURVEY

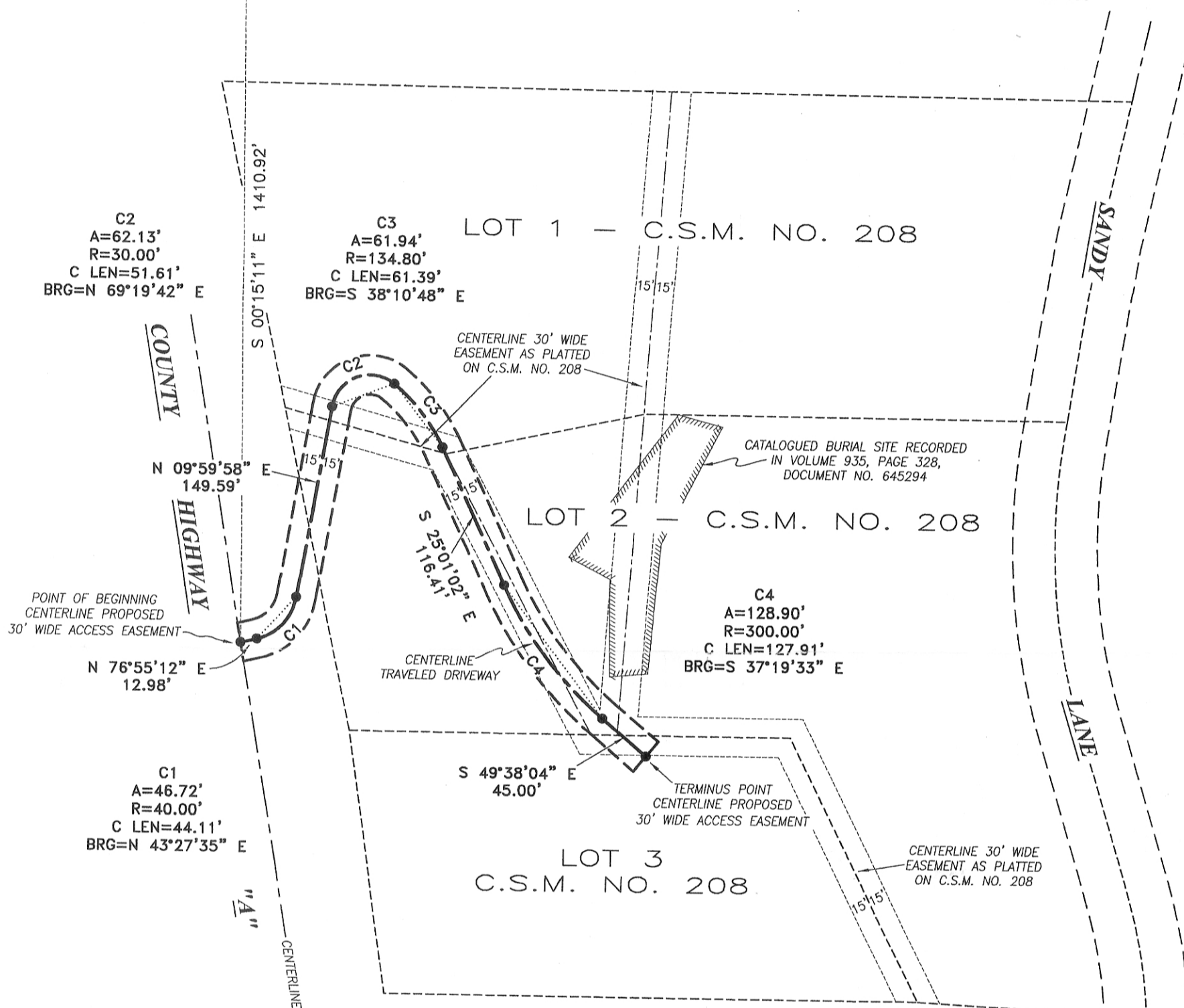
NORTHWEST CORNER
SECTION 27, T5N R6W
Aluminum Monument found

NORTH 1/4 CORNER
SECTION 27, T5N R6W
1" Rebar found with Grant
County Aluminum Cap



LEGEND

- ⊕ Section Corner—as designated
- No monument set



ACCESS EASEMENT DESCRIPTION:

A Thirty foot (30') wide access easement for ingress-egress, said easement being located 15 feet on each side of the following described centerline: Commencing at the Northwest corner of Section Twenty-seven (27), Township Five (5) North, Range Six (6) West of the 4th P.M., Town of Bloomington, Grant County, Wisconsin; thence North 89° 44' 49" East 1170.62 feet along the North line of said Section 27; thence South 00° 15' 11" East 1410.92 feet to a point in the centerline of County Highway "A", said point being the point of beginning; thence North 76° 55' 12" East 12.98 feet; thence 46.72 feet on the arc of a curve to the left with a radius of 40.00 feet and a long chord bearing North 43° 27' 35" East 44.11 feet; thence North 09° 59' 58" East 149.59 feet; thence 62.13 feet on the arc of a curve to the right with a radius of 30.00 feet and a long chord bearing North 69° 19' 42" East 51.61 feet; thence 61.94 feet on the arc of a curve to the right with a radius of 134.80 feet and a long chord bearing South 38° 10' 48" East 61.39 feet; thence South 25° 01' 02" East 116.41 feet; thence 128.90 feet on the arc of a curve to the left with a radius of 300.00 feet and a long chord bearing South 37° 19' 33" East 127.91 feet; thence South 49° 38' 04" East 45.00 feet to the terminus point.

EASEMENT NOTES:

Other documentation will need to be recorded to clarify the intent, use, maintenance, assignments or other pertinent information of this easement.

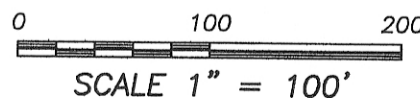
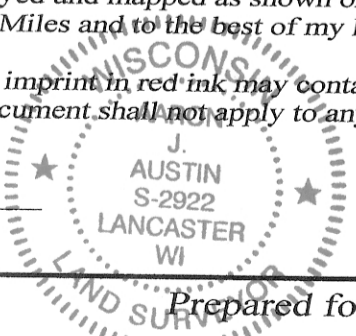
SURVEYOR'S CERTIFICATE:

I, Aaron J. Austin, Professional Wisconsin Land Surveyor, hereby certify:
That the above description was surveyed and mapped as shown on this plat by me or under my direct supervision, all in accordance to the instructions of Jon Miles and to the best of my knowledge and belief, this plat is an accurate representation thereof.

That all plans that do not show a seal imprint in red ink may contain unauthorized alterations.
The certification contained on this document shall not apply to any copies.

Dated this 10th day of August, 2016.

Aaron J. Austin
Aaron J. Austin, S-2922



The North line of the NW 1/4 of Section 27 bears N 89°44'49" E according to the Grant County Coordinate System NAD 83(2011) which was determined by WISCORS and G.P.S. observation.

Prepared for: JON MILES

Austin Engineering LLC
austinengineeringllc.com
4211 HWY 81 E, LANCASTER, WI 53813
PHONE: 608-723-6363 FAX: 608-723-6702

JOB NO: 16s125
H:CRD\16s125
H:PLAT\T5NR6W\27\16s125-MILES

FIELDBOOK: TDSR
DRAWN BY: AJ AUSTIN
CREW: SW AUSTIN, OJ AUSTIN