

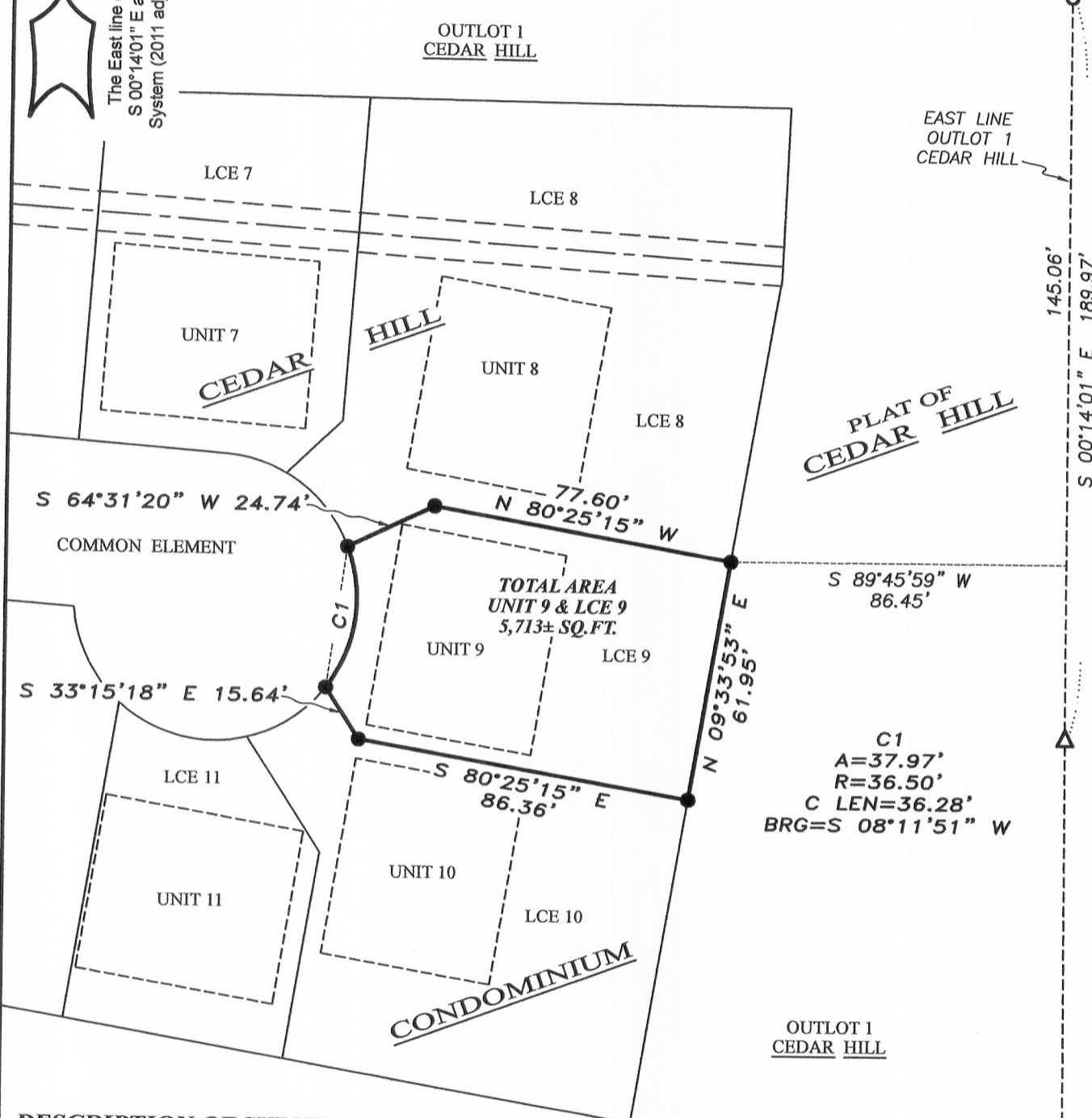
PLAT OF SURVEY

LEGEND

- △ 1" diameter iron pipe found
- 3/4" rebar found
- 3/4" x 18" rebar set with cap
- LCE Limited Common Element

NORTHEAST CORNER
OUTLOT 1, CEDAR HILL
CITY OF PLATTEVILLE,
GRANT COUNTY, WISCONSIN

The East line of the Recorded Plat of Cedar Hill bears
S 00°14'01" E according to the Grant County Coordinate
System (2011 adjustment) which was determined by G.P.S.



DESCRIPTION OF SURVEY:

Unit 9 and Limited Common Element for Unit 9, Cedar Hill Condominium, A Condominium Plat located in the City of Platteville, Grant County, Wisconsin.

SURVEYOR'S CERTIFICATE:

I, Aaron J. Austin, Professional Wisconsin Land Surveyor, hereby certify:

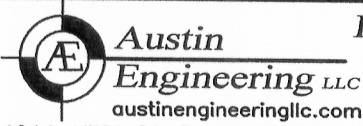
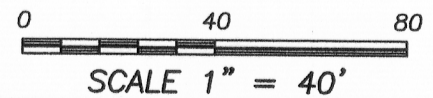
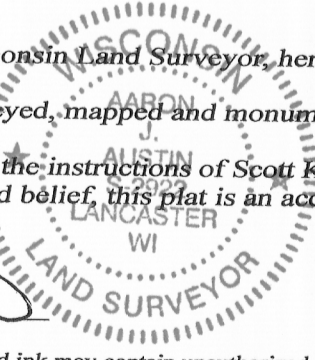
- That the above description was surveyed, mapped and monumented as shown on this plat by me or under my direct supervision.
- That this survey was prepared under the instructions of Scott Klinge.
- That to the best of my knowledge and belief, this plat is an accurate representation thereof.

Dated this 10th day of May, 2016.

Aaron J. Austin

Aaron J. Austin, S-2922

All plans that do not show a seal imprint in red ink may contain unauthorized alterations. The certification contained on this document shall not apply to any copies.



Prepared for: SCOTT KLINGE

JOB NO: 16s066
H:\CRD\16s066
H:\PLAT\PLVILLE\CEDAR HILL\16s066-KLINGE

FIELDBOOK: TDSR
DRAWN BY: AJ AUSTIN
CREW: SW AUSTIN, AJ AUSTIN

4211 HWY 81 E, LANCASTER, WI 53813
PHONE: 608-723-6363 FAX: 608-723-6702

SHEET 1 OF 1

MAY 11 2016