

PLAT OF SURVEY

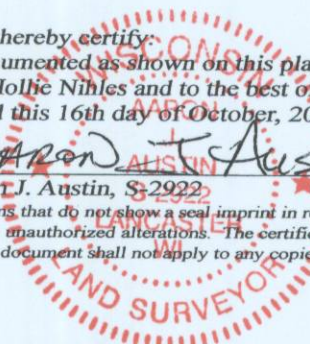
DESCRIPTION PROVIDED:

The North 20 feet of Lot 7, all of Lot 8 and the South 20 feet of Lot 9, all in Block 9 of Grace Addition to the Village of Livingston, Grant County, Wisconsin, according to the recorded map or plat thereof.

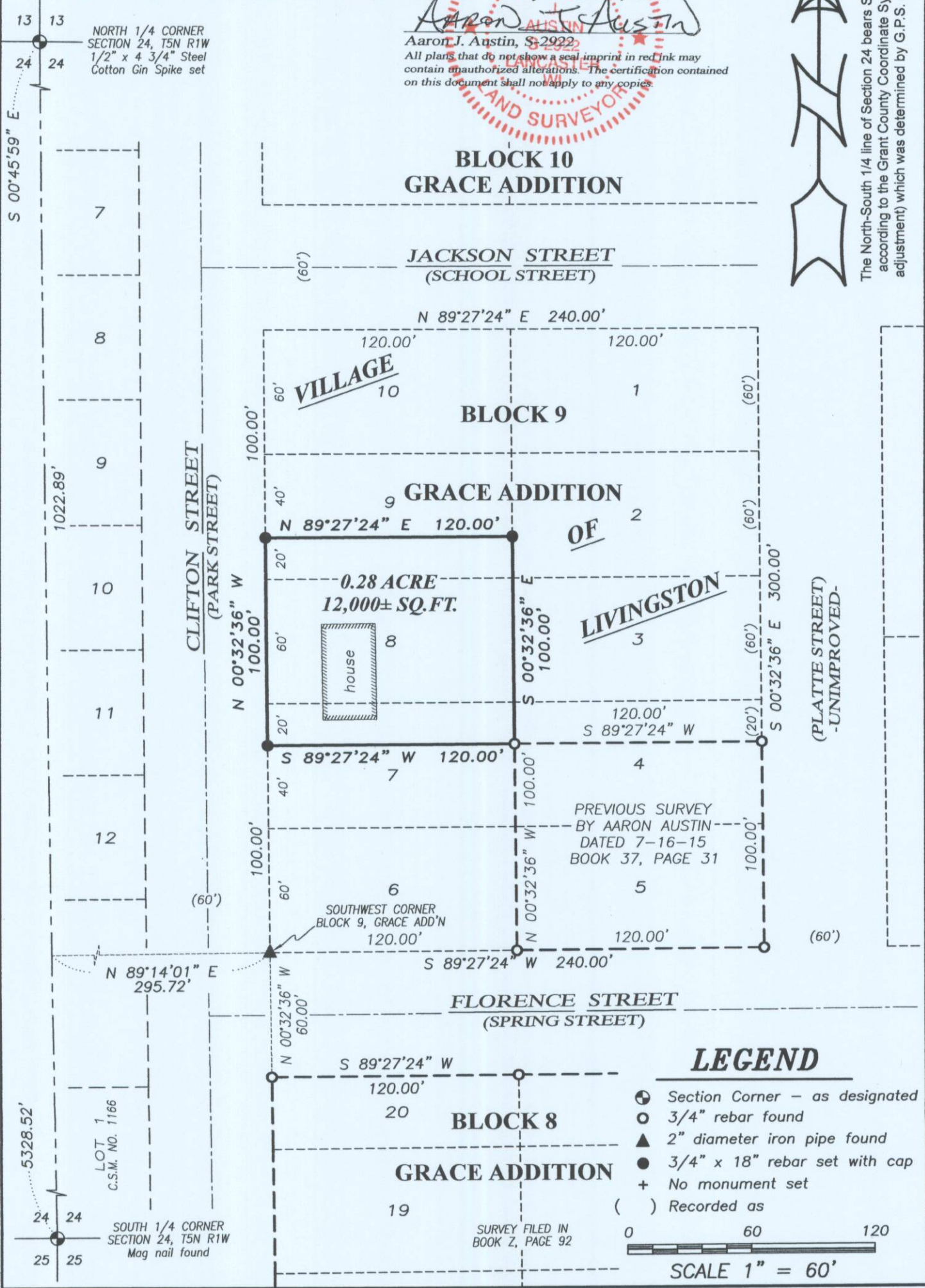
SURVEYOR'S CERTIFICATE:

I, Aaron J. Austin, Professional Wisconsin Land Surveyor, hereby certify:
That the above description was surveyed, mapped and monumented as shown on this plat by me or under my direct supervision, all in accordance to the instructions of Hollie Nihles and to the best of my knowledge and belief, this plat is an accurate representation thereof. Dated this 16th day of October, 2015.

Aaron J. Austin
Aaron J. Austin, S-2922
All plans that do not show a seal imprint in red ink may contain unauthorized alterations. The certification contained on this document shall not apply to any copies.

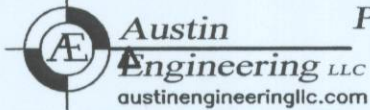
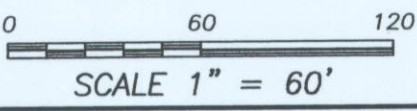


The North-South 1/4 line of Section 24 bears S 00°45'59" E according to the Grant County Coordinate System (2011 adjustment) which was determined by G.P.S. observation.



LEGEND

- ⊙ Section Corner - as designated
- 3/4" rebar found
- ▲ 2" diameter iron pipe found
- 3/4" x 18" rebar set with cap
- + No monument set
- () Recorded as



Prepared for: **HOLLIE NIHLES**

JOB NO: 15s194
H:\CRD\15s129
H:\PLAT\LIVINGSTON\GRACE\15s194-NIHLES

FIELDBOOK: TDSR
DRAWN BY: AJ AUSTIN
CREW: SW AUSTIN

4211 HWY 81 E, LANCASTER, WI 53813
PHONE: 608-723-6363 FAX: 608-723-6702

OCT 21 2015