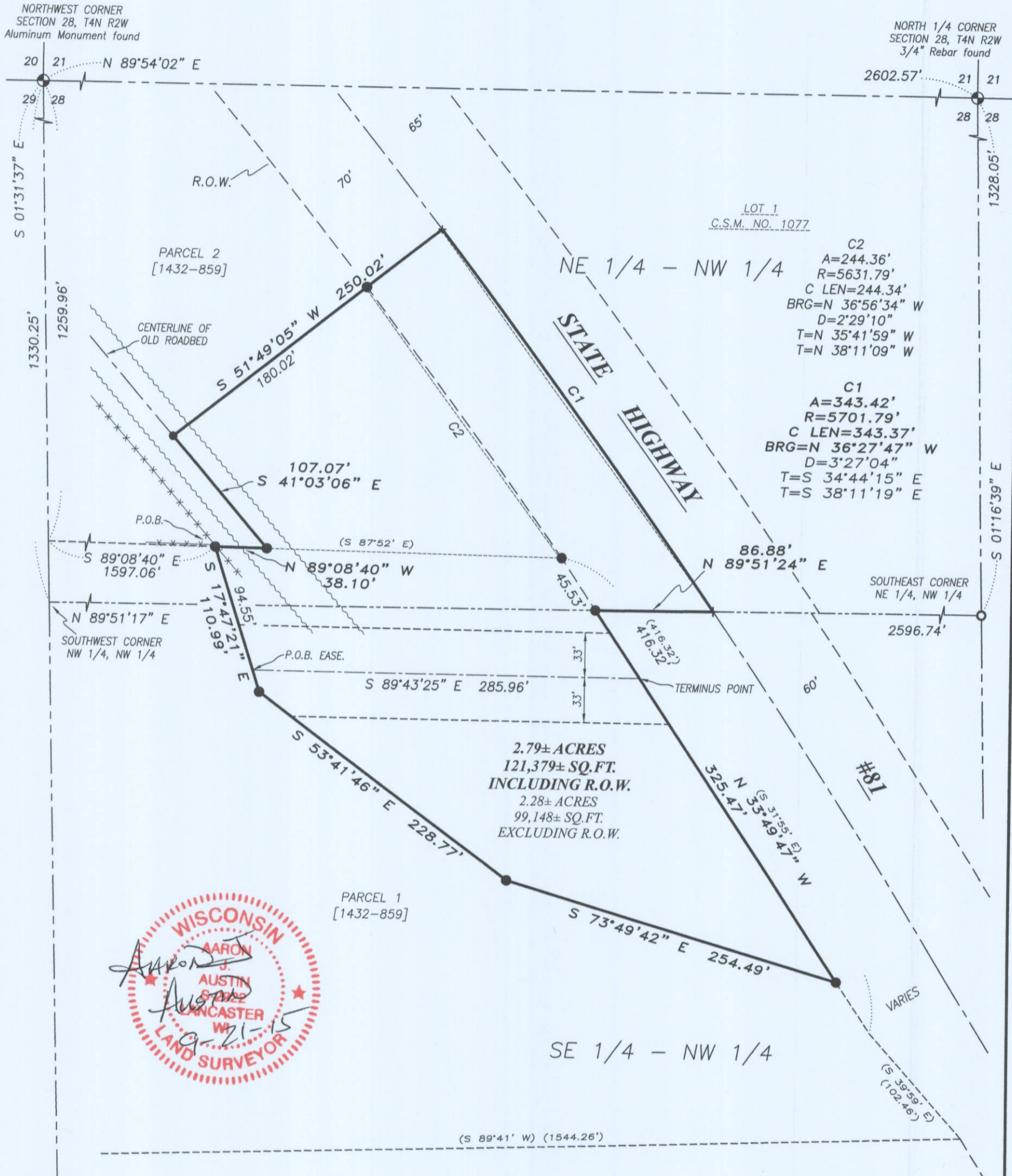


# PLAT OF SURVEY

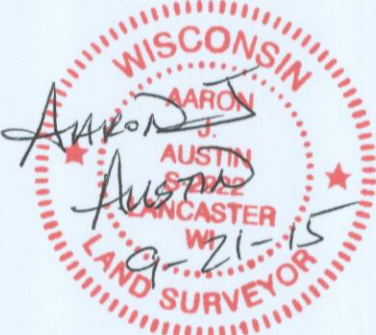


LOT 1  
C.S.M. NO. 1077

C2  
A=244.36'  
R=5631.79'  
C LEN=244.34'  
BRG=N 36°56'34" W  
D=2°29'10"  
T=N 35°41'59" W  
T=N 38°11'09" W

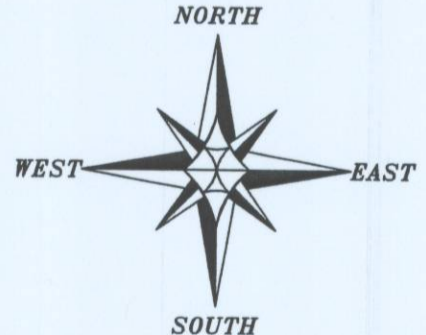
C1  
A=343.42'  
R=5701.79'  
C LEN=343.37'  
BRG=N 36°27'47" W  
D=3°27'04"  
T=S 34°44'15" E  
T=S 38°11'19" E

2.79± ACRES  
121,379± SQ.FT.  
INCLUDING R.O.W.  
2.28± ACRES  
99,148± SQ.FT.  
EXCLUDING R.O.W.

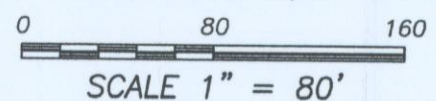


### LEGEND

- ⊕ Section Corner - as designated
- 3/4" x 18" rebar set with cap
- + No monument set
- ( ) Recorded as
- [ - ] Property described in Volume and Page, Grant County Registry
- \*- Approximate fence



The West line of the NW 1/4 of Section 28 bears S 01°31'37" E according to the Grant County Coordinate System (2011 adjustment) which was determined by G.P.S. observation.



ALL PLANS THAT DO NOT SHOW A SEAL IMPRINT IN RED INK MAY CONTAIN UNAUTHORIZED ALTERATIONS. THE CERTIFICATION CONTAINED ON THIS DOCUMENT SHALL NOT APPLY TO ANY COPIES. DATED: 9-21-2015.

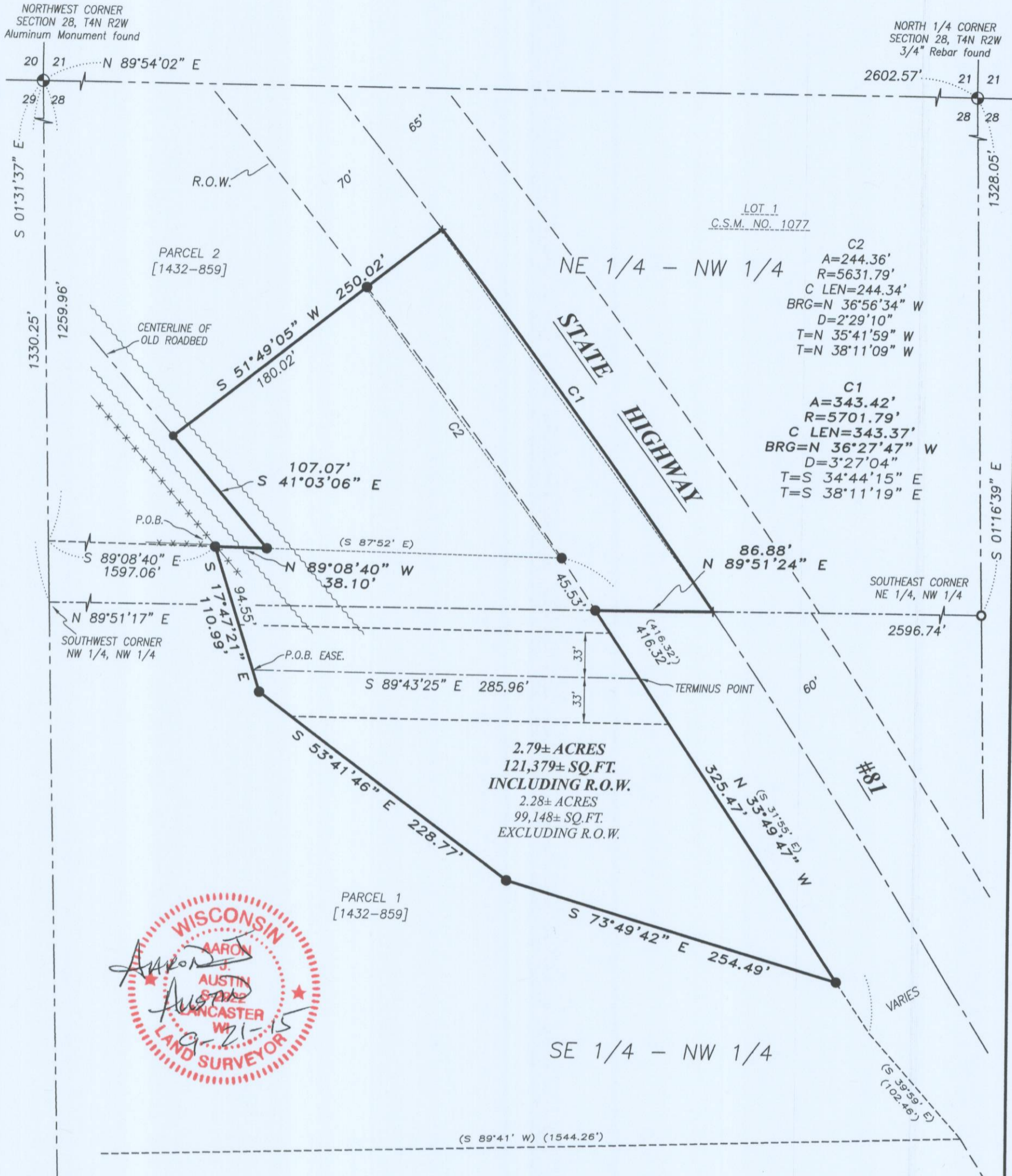
**Austin Engineering LLC**  
austinengineeringllc.com  
4211 HWY 81 E, LANCASTER, WI 53813  
PHONE: 608-723-6363 FAX: 608-723-6702

Prepared for: KEVIN NEWSWANGER

JOB NO: 15s142  
H:CRD\15s142  
H:PLAT\T4NR2W\28\15s142-NEWSWANGER

FIELDBOOK: TDSR  
DRAWN BY: AJ AUSTIN  
CREW: SW AUSTIN

# PLAT OF SURVEY

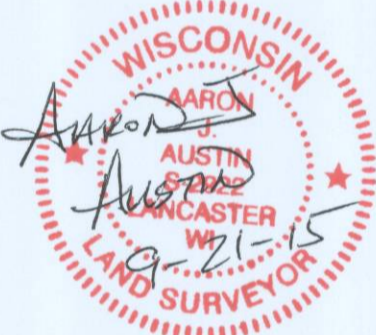


LOT 1  
C.S.M. NO. 1077

C2  
A=244.36'  
R=5631.79'  
C LEN=244.34'  
BRG=N 36°56'34" W  
D=2°29'10"  
T=N 35°41'59" W  
T=N 38°11'09" W

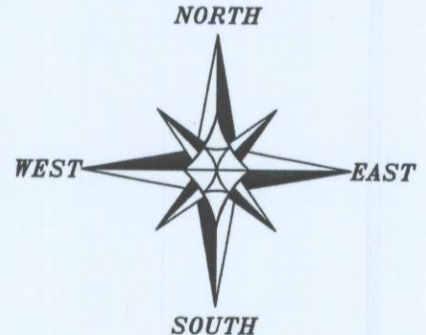
C1  
A=343.42'  
R=5701.79'  
C LEN=343.37'  
BRG=N 36°27'47" W  
D=3°27'04"  
T=S 34°44'15" E  
T=S 38°11'19" E

2.79± ACRES  
121,379± SQ.FT.  
INCLUDING R.O.W.  
2.28± ACRES  
99,148± SQ.FT.  
EXCLUDING R.O.W.

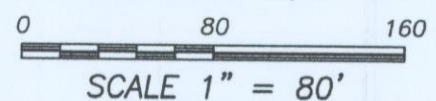


### LEGEND

- ⊕ Section Corner - as designated
- 3/4" x 18" rebar set with cap
- + No monument set
- ( ) Recorded as
- [ - ] Property described in Volume and Page, Grant County Registry
- \*- Approximate fence



The West line of the NW 1/4 of Section 28 bears S 01°31'37" E according to the Grant County Coordinate System (2011 adjustment) which was determined by G.P.S. observation.



ALL PLANS THAT DO NOT SHOW A SEAL IMPRINT IN RED INK MAY CONTAIN UNAUTHORIZED ALTERATIONS. THE CERTIFICATION CONTAINED ON THIS DOCUMENT SHALL NOT APPLY TO ANY COPIES. DATED: 9-21-2015.

**Austin Engineering LLC**  
austinengineeringllc.com  
4211 HWY 81 E, LANCASTER, WI 53813  
PHONE: 608-723-6363 FAX: 608-723-6702

Prepared for: **KEVIN NEWSWANGER**

JOB NO: 15s142  
H:CRD\15s142  
H:PLAT\T4NR2W\28\15s142-NEWSWANGER

FIELDBOOK: TDSR  
DRAWN BY: AJ AUSTIN  
CREW: SW AUSTIN

SEP 28 2015