

PLAT OF SURVEY

DESCRIPTION:

Lot Eight (8) of Princess Pat Subdivision of the City of Platteville, Grant County, Wisconsin, according to the recorded map or plat thereof.

LEGEND

- 3/4" x 18" rebar set with cap
- △ 1" diameter iron pipe found
- ▲ 2" diameter iron pipe found
- × Chisel " X " set
- ⊙ PK Nail found
- ⊠ Stone monument found
- () Recorded as

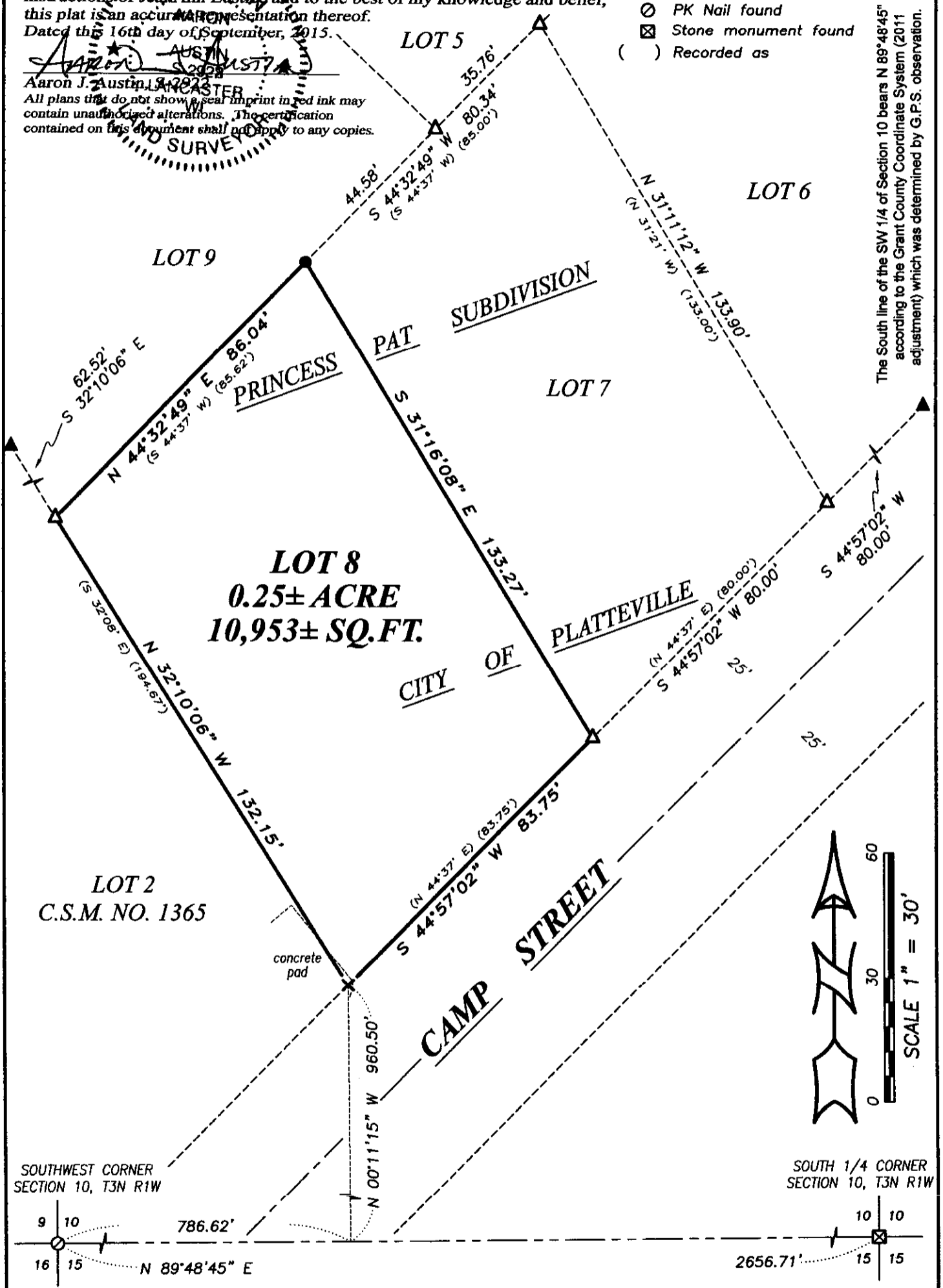
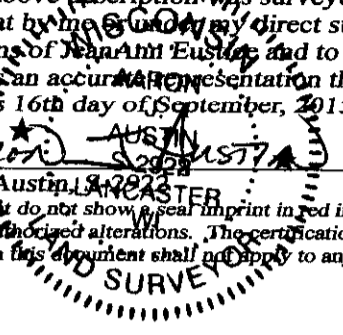
SURVEYOR'S CERTIFICATE:

I, Aaron J. Austin, Professional Wisconsin Land Surveyor, hereby certify: That the above description was surveyed, mapped and monumented as shown on this plat by me or under my direct supervision, all in accordance to the instructions of JeanAnn Eustice and to the best of my knowledge and belief, this plat is an accurate representation thereof.

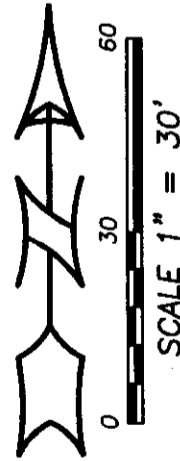
Dated the 16th day of September, 2015.

Aaron J. Austin
AUSTIN
S 2008

Aaron J. Austin, L.S. 2823
All plans that do not show a seal imprint in red ink may contain unauthorized alterations. The certification contained on this document shall not apply to any copies.



The South line of the SW 1/4 of Section 10 bears N 89°48'45" E according to the Grant County Coordinate System (2011 adjustment) which was determined by G.P.S. observation.



Austin Engineering LLC
austinengineeringllc.com
4211 HWY 81 E, LANCASTER, WI 53813
PHONE: 608-723-6363 FAX: 608-723-6702

Prepared for: JeanAnn Eustice

JOB NO: 15s046
H:CRD\15s046
H:PLAT\VILLE\PRINCESS PAT\15s046-EUSTICE

FIELDBOOK: TDSR
DRAWN BY: AJ AUSTIN
CREW: SWA-BLA-AJA

SHEET 1 OF 1

SEP 22 2015