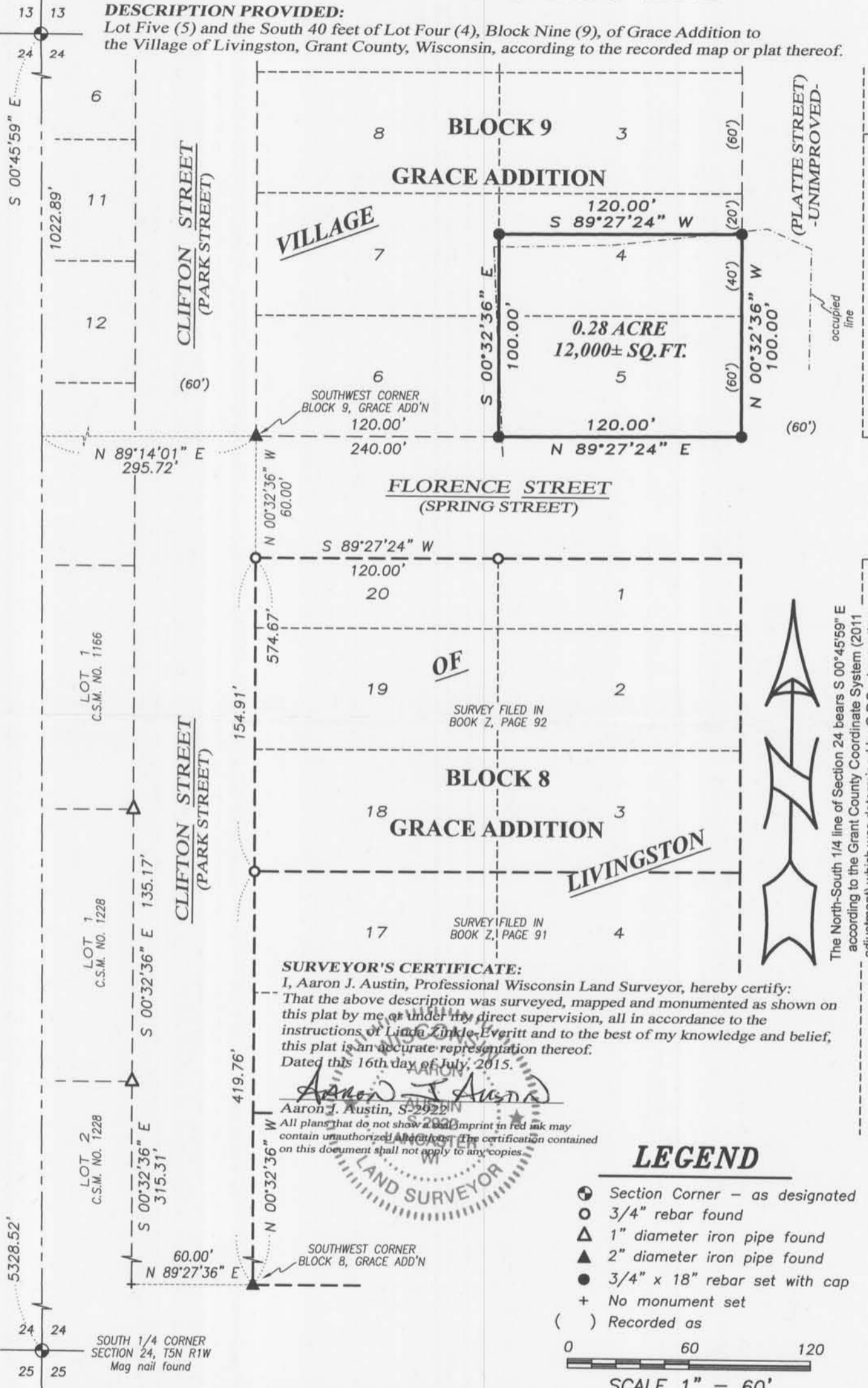


NORTH 1/4 CORNER  
SECTION 24, T5N R1W  
1/2" x 4 3/4" Steel  
Cotton Gin Spike set

# PLAT OF SURVEY

**DESCRIPTION PROVIDED:**

Lot Five (5) and the South 40 feet of Lot Four (4), Block Nine (9), of Grace Addition to the Village of Livingston, Grant County, Wisconsin, according to the recorded map or plat thereof.



**SURVEYOR'S CERTIFICATE:**

I, Aaron J. Austin, Professional Wisconsin Land Surveyor, hereby certify: That the above description was surveyed, mapped and monumented as shown on this plat by me or under my direct supervision, all in accordance to the instructions of Linda Zinke Everitt and to the best of my knowledge and belief, this plat is an accurate representation thereof. Dated this 16th day of July, 2015.

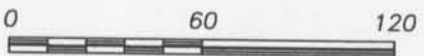
*Aaron J. Austin*  
 Aaron J. Austin, S-2922

All plans that do not show a seal imprint in red ink may contain unauthorized alterations. The certification contained on this document shall not apply to any copies.



**LEGEND**

- ⊕ Section Corner - as designated
- 3/4" rebar found
- △ 1" diameter iron pipe found
- ▲ 2" diameter iron pipe found
- 3/4" x 18" rebar set with cap
- + No monument set
- ( ) Recorded as



SCALE 1" = 60'

The North-South 1/4 line of Section 24 bears S 00°45'59" E according to the Grant County Coordinate System (2011 adjustment) which was determined by G.P.S. observation.

**Austin Engineering LLC**  
 austinengineeringllc.com

Prepared for: **TIM SLACK AUCTION & REALTY, LLC**

4211 HWY 81 E, LANCASTER, WI 53813  
 PHONE: 608-723-6363 FAX: 608-723-6702

JOB NO: 15s129  
 H:\CRD\15s129-SLACK  
 H:\PLAT\LIVINGSTON\GRACE\15s129-SLACK

FIELDBOOK: TDSR  
 DRAWN BY: AJ AUSTIN  
 CREW: SW AUSTIN BL AUSTIN