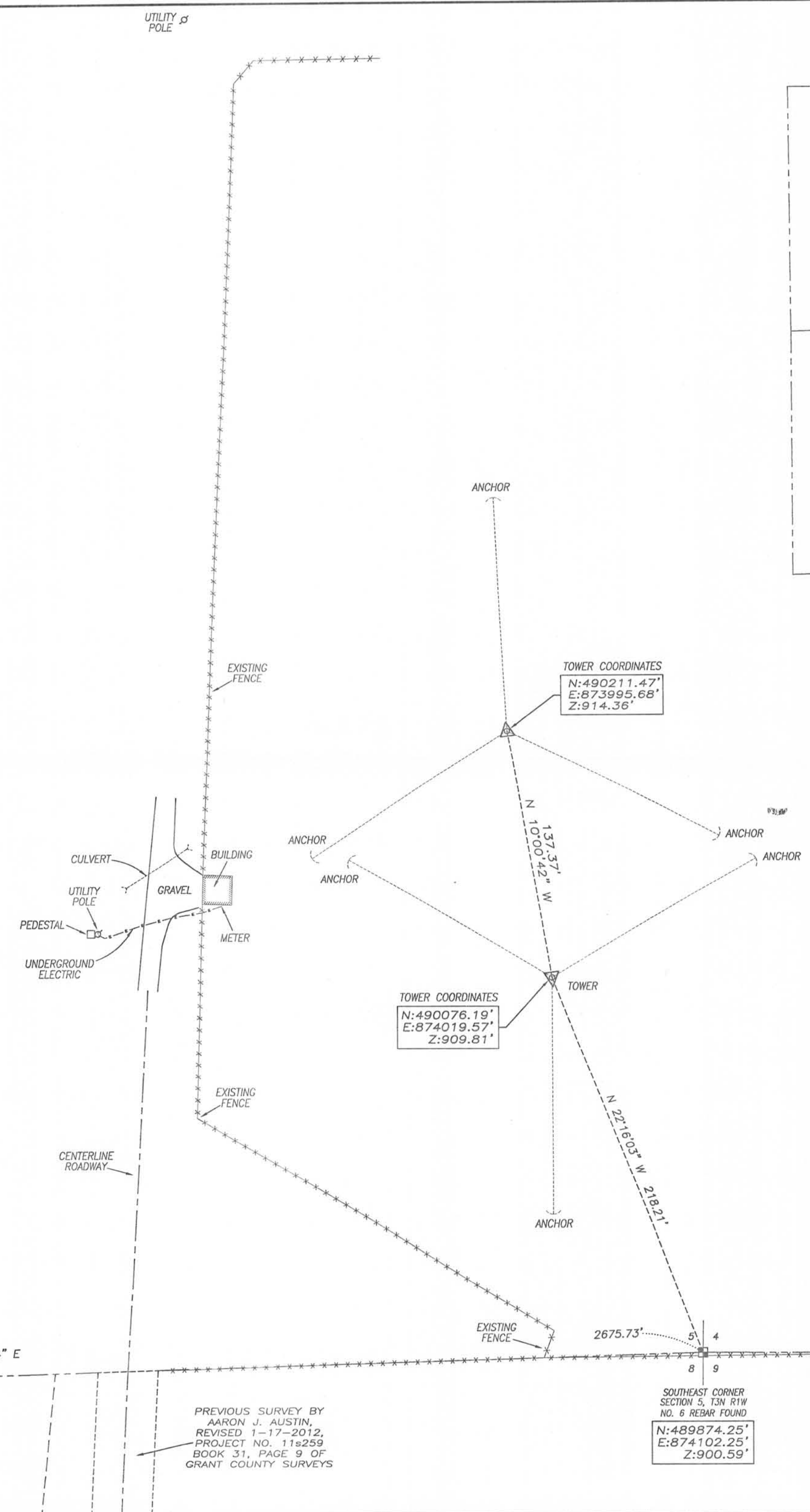
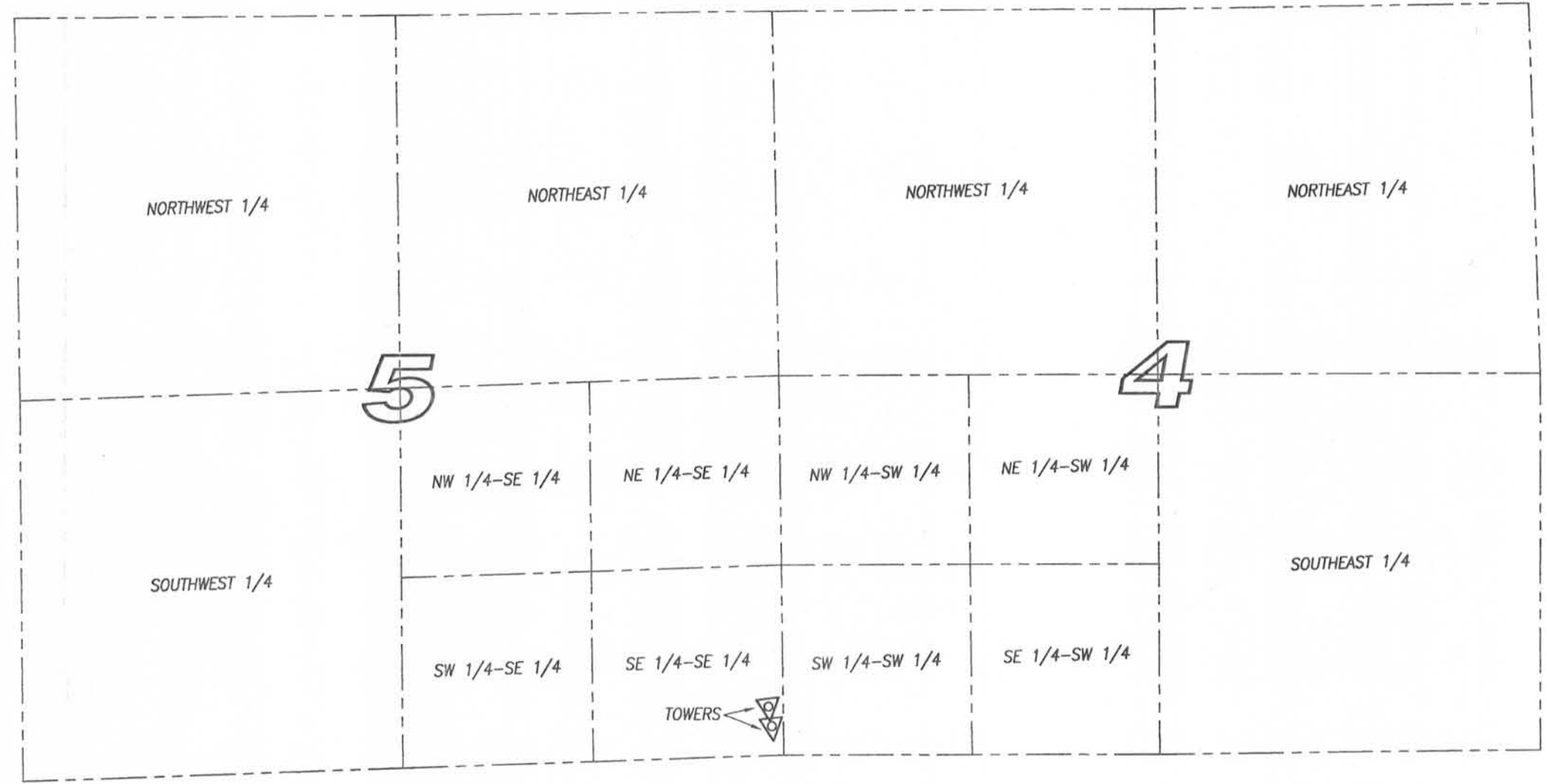


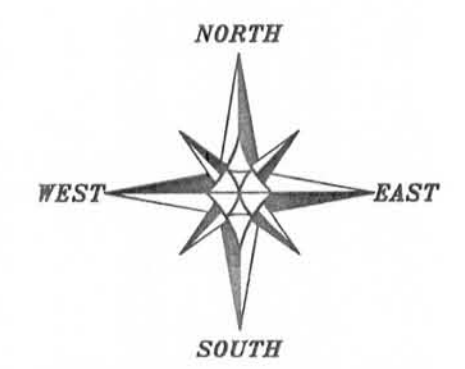
LOCATION SKETCH
SECTIONS 4 AND 5, T3N R1W, TOWN OF
PLATTEVILLE, GRANT COUNTY, WISCONSIN



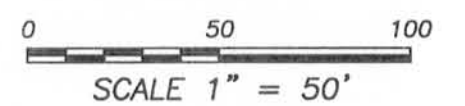
SURVEYOR'S CERTIFICATE:
I, Aaron J. Austin, Registered Wisconsin Land Surveyor, hereby certify:

That this Site Map was surveyed and mapped, as shown on hereon, by me or under my direct supervision.
This drawing has been submitted as a computerized drawing in AutoCAD format to QueenB Radio, Wisconsin. The Certification on this document only applies to the original signed and sealed hardcopy.
That this survey was prepared under the instructions of Leonard Charles, Director of Engineering.
That to the best of my knowledge and belief, this plat is an accurate representation thereof.
That all plans that do not show a seal imprint in red ink may contain unauthorized alterations.
The certification contained on this document shall not apply to any copies.

Dated this 12th day of December, 2013.
Aaron J. Austin
Aaron J. Austin, S-2922



The South line of the SW 1/4 of Section 5 bears N 88°17'14" E according to the Grant County Coordinate System NAD83 (2007 adjustment) which was determined by G.P.S. observation.



SITE MAP

PREPARED FOR: QueenB Radio Wisconsin, Inc.
WPVL AM - TOWER SITE
Located in Section 5, T3N R1W, Town of Platteville, Grant County, Wisconsin

Austin Engineering LLC
austinengineeringllc.com
4211 HWY 81 E
LANCASTER, WI 53813
PHONE 608-723-6363
FAX 608-723-6702

JOB NO: 13s128
G: 13s128
H: PLAT\T3NR1W\05\13s128-QueenB
FIELDBOOK: TDSR
DRAWN BY: AJ AUSTIN
CREW: SW AUSTIN
SHEET 1 OF 1