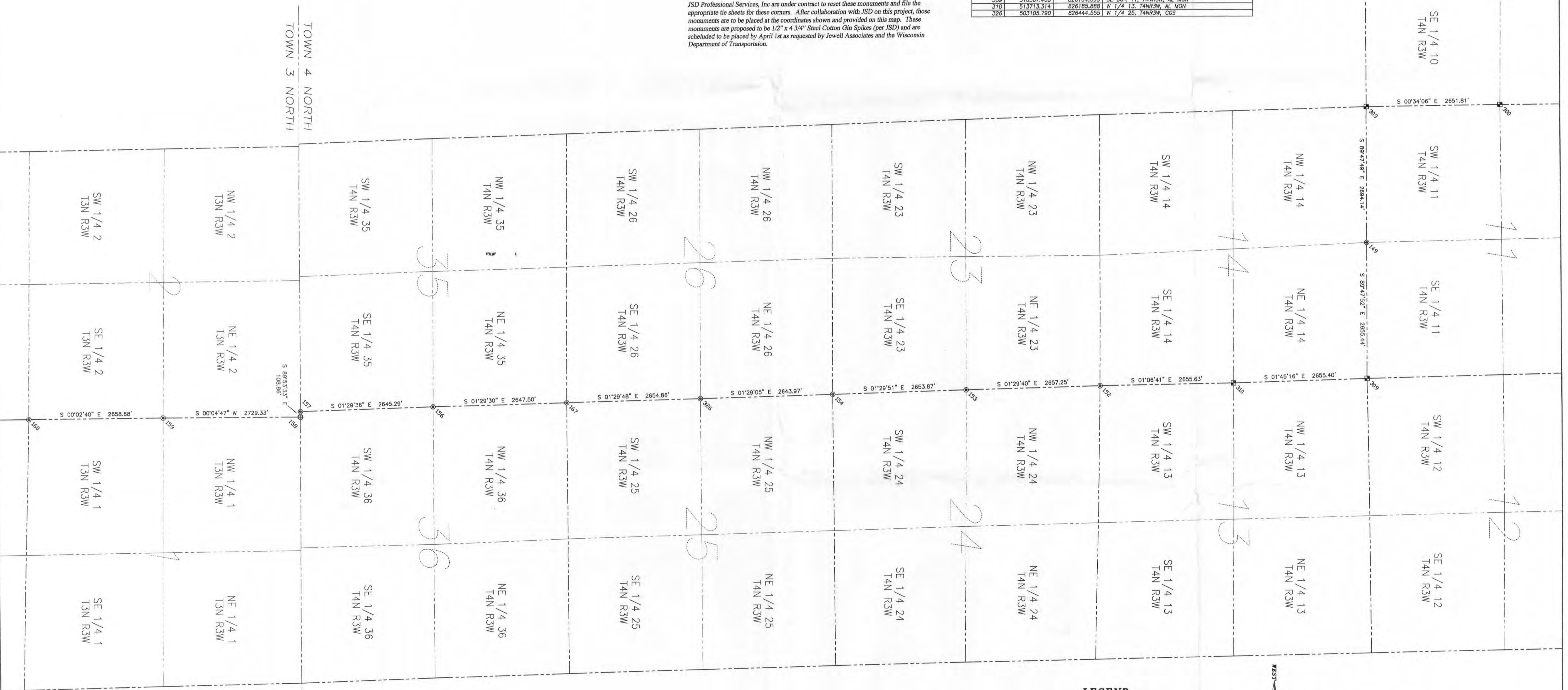


PLAT OF SURVEY

SURVEYOR'S NOTES:
 Highway #61 was recently resurfaced in conjunction with Project ID 1650-06-71. Under this project, the monuments for the following corners were lost and to be reset: T4N R3W:
 Section 11, South 1/4 corner
 Section 13, Southwest corner
 Section 24, West 1/4 corner and Southwest corner
 Section 25, Southwest corner
 Section 36, West 1/4 corner and Southwest corner
 T3N R3W:
 Section 1, West 1/4 corner
 Section 12, West 1/4 corner

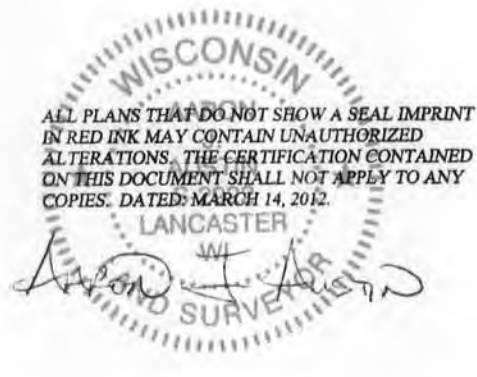
JSD Professional Services, Inc are under contract to reset these monuments and file the appropriate tie sheets for these corners. After collaboration with JSD on this project, those monuments are to be placed at the coordinates shown and provided on this map. These monuments are proposed to be 1/2" x 4 3/4" Steel Cotton Gin Spikes (per JSD) and are scheduled to be placed by April 1st as requested by Jewell Associates and the Wisconsin Department of Transportation.

POINT	NORTHING	EASTING	DESCRIPTION
149	518376.846	823449.168	S 1/4 11, T4NR3W, CGS
152	511058.182	826237.401	SW COR 13, T4NR3W, CGS
153	508401.835	826306.699	W 1/4 24, T4NR3W, CGS
154	505748.971	823376.049	SW COR 24, T4NR3W, CGS
167	500451.836	826513.900	SW COR 25, T4NR3W, CGS
158	497805.229	826582.823	W 1/4 36, T4N R3W, CGS
157	495160.840	826851.766	SW COR 36, T4NR3W, CGS
158	495160.836	826760.628	NW COR 1, T3NR3W, #8-CAP
159	492451.306	826756.827	W 1/4 1, T3NR3W, CGS
160	489772.624	826758.895	SW COR 1, T3NR3W, CGS
300	519038.072	820728.750	W 1/4 11, T4NR3W, AL MON
303	518386.398	820753.047	SW COR 11, T4NR3W, AL MON
309	518367.468	826104.595	SE COR 11, T4NR3W, AL MON
310	513713.314	826185.888	W 1/4 13, T4NR3W, AL MON
326	503105.790	826444.555	W 1/4 25, T4NR3W, CGS



LEGEND

- ⊙ No. 6 rebar found with Grant County Aluminum Cap
- ⊕ No. 8 rebar found with Grant County Aluminum Cap
- ⊖ No. 10 rebar found
- ⊗ No. 6 rebar found
- ▲ 2" iron pipe with Aluminum Cap
- ◆ 3" iron pipe with Aluminum Cap
- ⊠ Aluminum Monument found
- ⊡ No. 8 x 30" rebar set with Grant County Aluminum Cap
- ⊙ 1/2" Steel Cotton Gin Spike (see note)
- ⊙ P.K. Nail set



PREPARED FOR: SEH INC.
 I.D. 1650-06-02
 USH 61 DICKEYVILLE-LANCASTER
 GRANT COUNTY, WISCONSIN

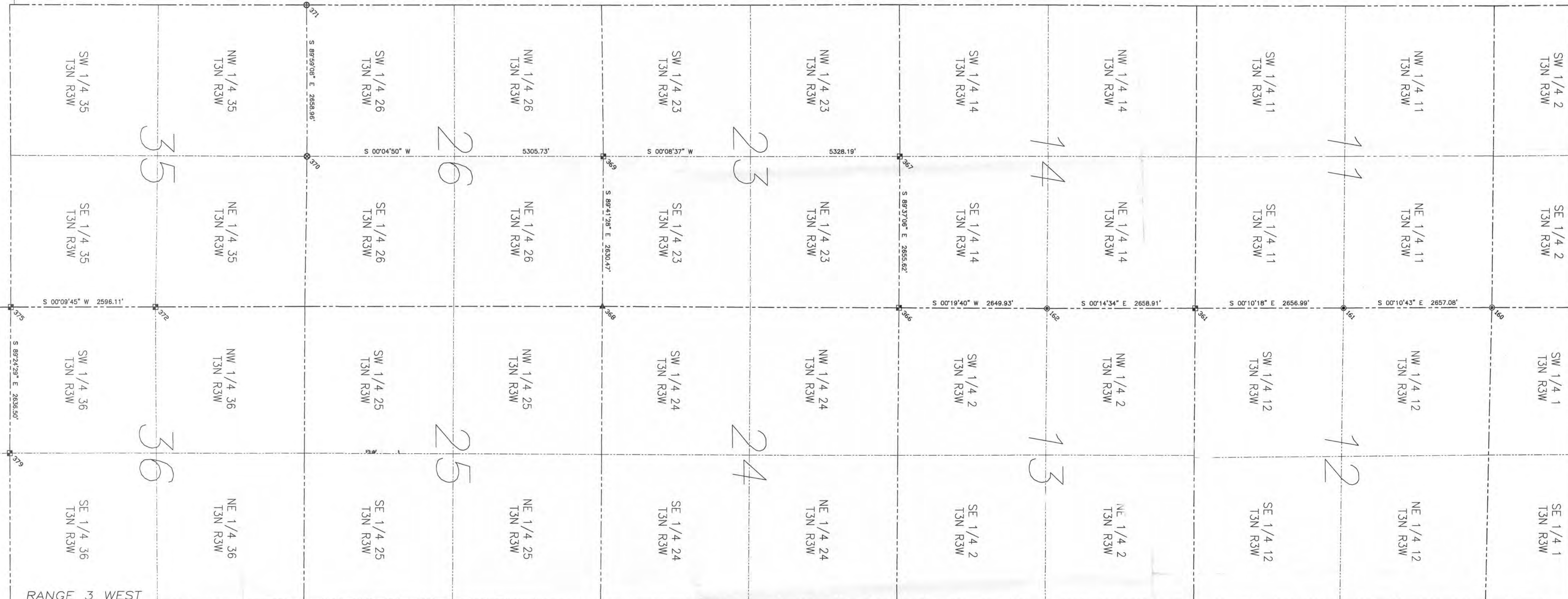
Austin Engineering LLC
 4211 HWY 81 E
 LANCASTER, WI 53813
 PHONE 608-723-6363
 FAX 608-723-6702
 austinengineeringllc.com

JOB NO: 11e192
 G:\GRANTDOT\HY61B
 H:\PLAT\GRANTDOT\11e193-HY61S-SH(c) CREW: BS-SB SHEET 1 OF 3

FIELDBOOK: TDSR
 DRAWN BY: AJ AUSTIN

PLAT OF SURVEY

TOWN 3 NORTH
TOWN 2 NORTH



RANGE 3 WEST
RANGE 2 WEST

GRANT COUNTY COORDINATES

POINT	NORTHING	EASTING	DESCRIPTION
160	489772.624	826758.895	SW COR 1, T3NR3W, CGS
161	487715.359	826767.183	W 1/4 12, T3NR3W, CGS
162	481799.702	826766.411	W 1/4 13, T3NR3W, CGS
361	484458.585	826775.149	SW COR 12, T3NR3W, CGS
366	479149.812	826771.249	SW COR 12, T3NR3W, AL MON
367	479167.506	824115.692	S 1/4 14, T3NR3W, AL MON
368	473825.161	826732.780	SW COR 24, T3NR3W, 2" IP-CAP
369	473839.337	824102.346	S 1/4 23, T3NR3W, AL MON
370	468533.611	824094.877	S 1/4 26, T3NR3W, #6-CAP
371	468534.282	821435.919	SW COR 28, T3NR3W, #6-CAP
372	465812.366	826731.954	W 1/4 36, T3NR3W, AL MON
375	463216.265	826724.597	SW COR 36, T3NR3W, AL MON
379	463189.026	829360.958	S 1/4 36, T3NR3W, AL MON

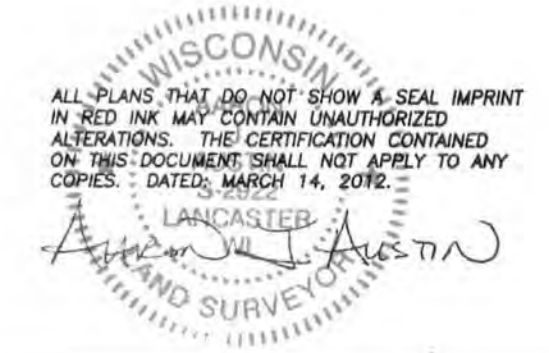
SURVEYOR'S NOTES:
Highway #61 was recently resurfaced in conjunction with Project ID 1650-06-71. Under this project, the monuments for the following corners were lost and to be reset:
T4N R3W:

- Section 11, South 1/4 corner
 - Section 13, Southwest corner
 - Section 24, West 1/4 corner and Southwest corner
 - Section 25, Southwest corner
 - Section 36, West 1/4 corner and Southwest corner
- T3NR3W:
- Section 1, West 1/4 corner
 - Section 12, West 1/4 corner

JSD Professional Services, Inc are under contract to reset these monuments and file the appropriate tie sheets for these corners. After collaboration with JSD on this project, those monuments are to be placed at the coordinates shown and provided on this map. These monuments are proposed to be 1/2" x 4 3/4" Steel Cotton Gin Spikes (per JSD) and are scheduled to be placed by April 1st as requested by Jewell Associates and the Wisconsin Department of Transportation.

LEGEND

- ⊙ No. 6 rebar found with Grant County Aluminum Cap
- ⊙ No. 8 rebar found with Grant County Aluminum Cap
- ⊙ No. 10 rebar found
- ⊙ No. 6 rebar found
- ▲ 2" iron pipe with Aluminum Cap
- ▲ 3" Iron pipe with Aluminum Cap
- Aluminum Monument found
- ⊙ No. 8 x 30" rebar set with Grant County Aluminum Cap
- ⊙ 1/2" Steel Cotton Gin Spike (see note)
- ⊙ P.K. Nail set



PREPARED FOR: SEH INC.
I.D. 1650-06-02
USH 61 DICKEYVILLE-LANCASTER
GRANT COUNTY, WISCONSIN

Austin Engineering LLC
4211 HWY 81 E
LANCASTER, WI 53813
PHONE 608-723-6363
FAX 608-723-6702

JOB NO: 11e192
G:\GRANTDOT\11e192\11e192-06-02\11e192-06-02.dwg
H:\PLAT\GRANTDOT\11e192-06-02\11e192-06-02.dwg

FIELDBOOK: TDSR
DRAWN BY: AJ AUSTIN
CREW: BS-58

PLAT OF SURVEY



GRANT COUNTY COORDINATES

POINT	NORTHING	EASTING	DESCRIPTION
164	449852.775	837545.826	W 1/4 17, T2NR2W, NO MON
165	447191.220	842712.833	SE COR 17, T2NR2W, AL MON
166	447220.712	843360.365	S 1/4 16, T2NR2W, #8-CAP
400	457853.679	829392.966	N 1/4 12, T2NR3W, AL MON
403	457775.292	832047.256	NW COR 7, T2NR2W, AL MON
406	457741.552	835054.910	N 1/4 7, T2NR2W, AL MON
407	455121.084	832081.383	W 1/4 7, T2N R2W, AL MON
408	452516.941	834859.017	S 1/4 7, T2NR2W, AL MON
409	452527.887	837587.729	SE COR 7, T2NR2W, 3"IP-CAP
413	450091.940	837550.468	WITNESS W 1/4 17, #10 BAR
423	449830.108	842759.589	E 1/4 17, T2NR2W, #8-CAP
424	447250.203	848007.898	SE COR 16, T2NR2W, AL MON
425	441921.244	845429.704	S 1/4 21, T2NR2W, #6 IBF

SURVEYOR'S NOTES:

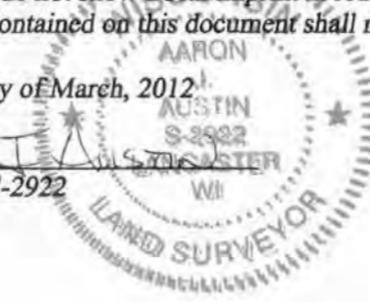
Highway #61 was recently resurfaced in conjunction with Project ID 1650-06-71. Under this project, the monuments for the following corners were lost and to be reset:
 T4N R3W:
 Section 11, South 1/4 corner
 Section 13, Southwest corner
 Section 24, West 1/4 corner and Southwest corner
 Section 25, Southwest corner
 Section 36, West 1/4 corner and Southwest corner
 T3NR3W:
 Section 1, West 1/4 corner
 Section 12, West 1/4 corner

JSD Professional Services, Inc are under contract to reset these monuments and file the appropriate tie sheets for these corners. After collaboration with JSD on this project, those monuments are to be placed at the coordinates shown and provided on this map. These monuments are proposed to be 1/2" x 4 3/4" Steel Cotton Gin Spikes (per JSD) and are scheduled to be placed by April 1st as requested by Jewell Associates and the Wisconsin Department of Transportation.

SURVEYOR'S CERTIFICATE:

I, Aaron J. Austin, Registered Wisconsin Land Surveyor, hereby certify:
 That the corners shown on this survey were surveyed, mapped and monumented as shown on this plat by me or under my direct supervision.
 That this survey was prepared under the instructions of Ray Polkinghorn, Project Manager of SEH Inc. That to the best of my knowledge and belief, this plat is an accurate representation thereof.
 That all plans that do not show a seal in printing red ink may contain unauthorized alterations.
 The certification contained on this document shall not apply to any copies.

Dated this 14th day of March, 2012
 Aaron J. Austin, S-2922



LEGEND

- ⊙ No. 6 rebar found with Grant County Aluminum Cap
- ⊕ No. 8 rebar found with Grant County Aluminum Cap
- ⊖ No. 10 rebar found
- No. 6 rebar found
- ▲ 2" iron pipe with Aluminum Cap
- ⊕ 3" iron pipe with Aluminum Cap
- ⊖ Aluminum Monument found
- ⊙ No. 8 x 30" rebar set with Grant County Aluminum Cap
- ⊕ 1/2" Steel Cotton Gin Spike (see note)
- P.K. Nail set



COORDINATES SHOWN HEREON ARE GRANT COUNTY COORDINATES AS PROVIDED BY THE WISCONSIN DEPARTMENT OF TRANSPORTATION.
 0 900 1800
 SCALE 1" = 900'

PREPARED FOR: SEH INC.
 I.D. 1650-06-02
 USH 61 DICKEYVILLE-LANCASTER
 GRANT COUNTY, WISCONSIN

Austin Engineering LLC
 4211 HWY 81 E
 LANCASTER, WI 53813
 PHONE: 608-723-6363
 FAX: 608-723-6702
 austinengineeringllc.com

JOB NO: 11a192
 G:\GRANTDOT\HWY61B
 H:\PLAT\GRANTDOT\11a193-HWY61S-SDH(c)
 FIELDBOOK: TDSR
 DRAWN BY: AJ AUSTIN
 CREW: BS-SB
 SHEET 3 OF 3