

PLAT OF SURVEY



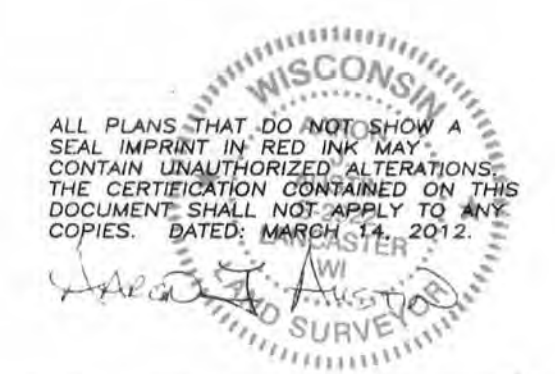
POINT	NORTHING	EASTING	DESCRIPTION
1	564258.853	836322.308	SE COR 30, T6NR2W, #8-CAP
2	561609.850	836348.208	W 1/4 32, T6NR2W, #8-CAP
3	568990.375	836358.961	NE COR 6, T5NR2W, 1" IPF
4	566222.514	836373.543	E 1/4 6, T5NR2W, AL MON
5	565560.523	833701.279	S 1/4 6, T5NR2W, #8-CAP
6	565026.915	836296.381	E 1/4 30, T6NR2W, #8-CAP
7	568981.123	833654.893	N 1/4 30, T6NR2W, AL MON
8	569559.386	830992.749	NW COR 30, T6NR2W, AL MON
9	569581.455	836297.821	NE COR 30, T6NR2W, AL MON
10	564268.987	838989.519	S 1/4 29, T6NR3W, #8-CAP
11	561617.000	839006.415	CENTER 32, T6NR2W, STONE
12	564241.983	833573.106	E 1/4 6, T6NR2W, AL MON
13	568987.176	839018.808	N 1/4 5, T5NR2W, #8-CAP
14	563538.891	831040.721	NE COR 12, T5NR3W, #8-CAP
15	548231.510	833681.462	S 1/4 7, T5NR2W, 1" IPF
16	548226.416	828401.136	S 1/4 12, T5NR3W, #10 IBF
17	553528.324	828377.449	N 1/4 12, T5NR3W, #10 IBF
18	543586.121	831074.848	E 1/4 13, T5NR3W, AL MON
19	543595.387	833684.966	CENTER 18, T5NR2W, #6 IBF
20	542930.238	831066.786	SE COR 13, T5NR3W, #6 IBF
21	537619.444	831119.180	SW COR 18, T5NR2W, #8-CAP
22	534953.277	831144.591	E 1/4 25, T5NR3W, #8-CAP
23	558987.449	833715.911	N 1/4 6, T5NR2W, #8-CAP
24	558987.427	833724.161	S 1/4 31, T5NR2W, #8-CAP
25	561609.798	833688.870	CENTER 31, T6NR2W, #8-CAP
26	566905.175	833683.986	CENTER 30, T6NR2W, #8-CAP
27	558980.330	836375.461	SW COR 32, T6NR2W, #8-CAP
28	558981.197	839007.058	S 1/4 32, T6NR2W, #8-CAP
29	556209.703	833708.448	CENTER 6, T5NR2W, #8-CAP
30	548224.239	831052.795	SE COR 12, T5NR3W, #8-CAP
31	548237.839	831052.795	SW COR 7, T5NR2W, #8-CAP
32	533597.370	831040.597	SW COR 6, T5NR2W, #8-CAP
33	550877.370	828389.293	CENTER 12, T5NR3W, #8-CAP
34	545603.938	831074.898	W 1/4 18, T5NR2W, AL MON
35	550881.568	831046.786	E 1/4 12, T5NR2W, #8-CAP
36	550807.305	831046.700	W 1/4 7, T5NR2W, #8-CAP
37	542921.278	833688.879	S 1/4 18, T5NR2W, #8-CAP
38	550881.568	831046.786	SW COR 18, T5NR2W, #8-CAP
39	550904.126	833691.363	CENTER 7, T5NR2W, #8-CAP
40	537617.985	833756.062	S 1/4 19, T5NR2W, #8-CAP
41	569544.866	830962.193	NE COR 25, T5NR3W, #8-CAP
42	534953.277	831144.540	W 1/4 30, T5NR2W, #8-CAP
43	540276.034	831092.961	W 1/4 19, T5NR2W, #8-CAP
44	540274.714	831092.974	E 1/4 24, T5NR3W, #8-CAP
45	540269.226	833722.479	CENTER 19, T5NR2W, #8-CAP

COORDINATES SHOWN HEREON ARE PROVIDED BY THE WISCONSIN DEPARTMENT OF TRANSPORTATION.

SCALE 1" = 900'

LEGEND

- ⊙ No. 6 rebar found with Grant
- ⊙ No. 8 rebar found with Grant
- ⊙ No. 10 rebar found with Grant
- ⊙ County Aluminum Cap
- ⊙ No. 6 rebar found with Grant
- ⊙ No. 8 rebar found with Grant
- ⊙ No. 10 rebar found with Grant
- ⊙ Aluminum Monument found
- ⊙ 1" diameter iron pipe found
- ⊙ Stone monument found
- ⊙ No. 8 x 30" rebar set with Grant
- ⊙ Grant County Aluminum Cap



PREPARED FOR: SEH INC.
I.D. 1650-06-03
USH 61 LANCASTER-FENNIMORE
GRANT COUNTY, WISCONSIN

Austin Engineering LLC
4211 HWY 81 E
LANCASTER, WI 53813
PHONE 608-723-6363
FAX 608-723-6702

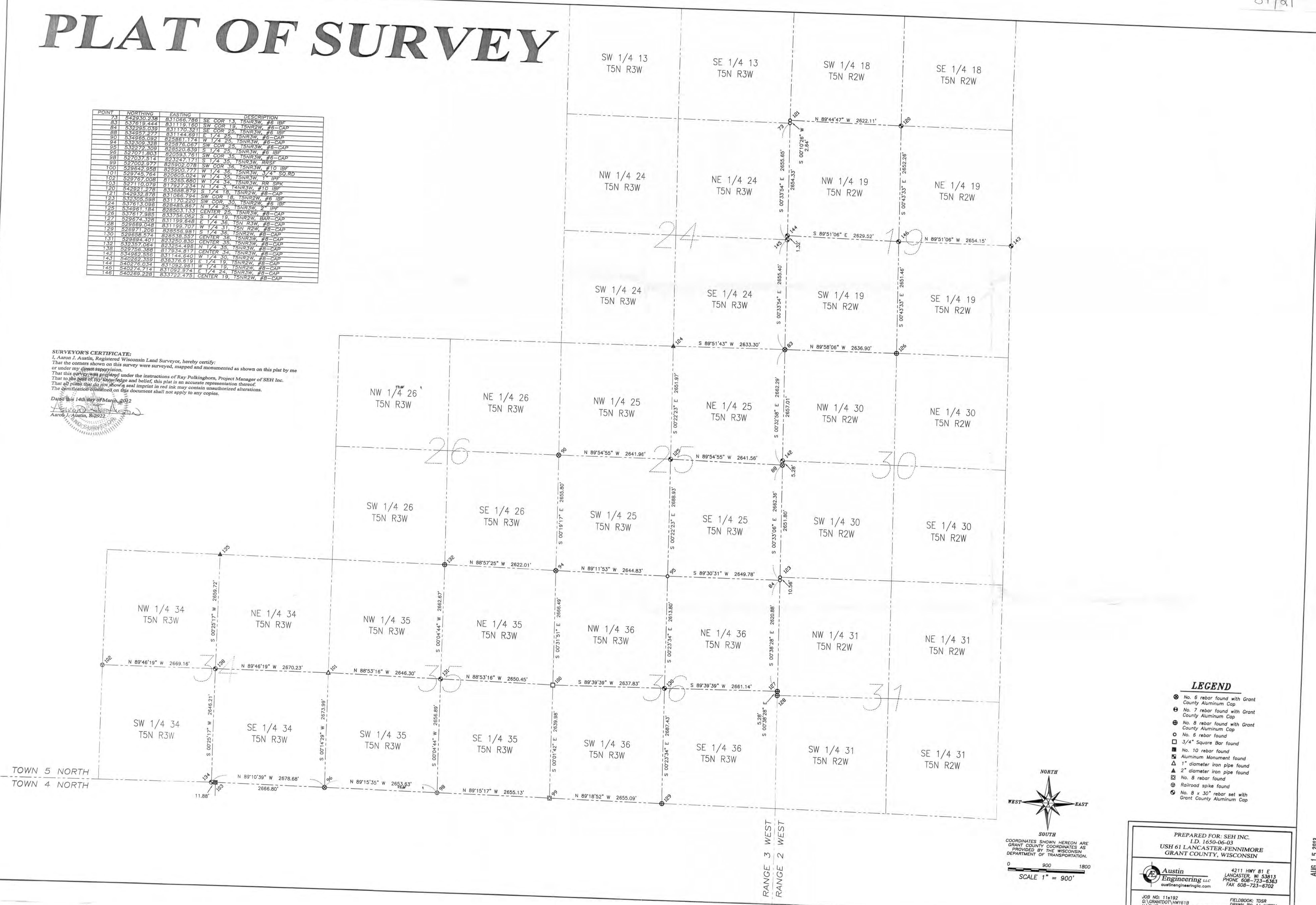
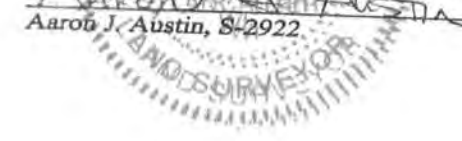
JOB NO: 11s192
S:\GRANT\DOT\11s192-HWY81N-SEH(c).DWG
FIELDBOOK: TDSR
DRAWN BY: AL AUSTIN
CREW: BS-SB
SHEET 1 OF 2

PLAT OF SURVEY

POINT	NORTHING	EASTING	DESCRIPTION
73	542930.238	831066.786	SE COR 13, T5N R3W, #8 IBF
83	532619.444	831119.160	SW COR 19, T5N R2W, #8-CAP
84	532285.039	831170.971	SE COR 25, T5N R3W, #8 IBF
88	534957.277	831144.851	E 1/4 25, T5N R3W, #8-CAP
90	534965.092	825861.174	W 1/4 25, T5N R3W, #8-CAP
94	532369.328	825876.087	SW COR 25, T5N R3W, #8-CAP
95	532272.309	825820.639	S 1/4 25, T5N R3W, #8 IBF
98	527071.803	820593.761	SW COR 35, T5N R3W, #8 IBF
98	527031.514	833247.171	S 1/4 35, T5N R3W, RR SF
100	529642.958	825900.777	SW COR 35, T5N R3W, #10 IBF
101	529745.764	820605.024	W 1/4 35, T5N R3W, #10 IBF
102	529745.764	820605.024	W 1/4 35, T5N R3W, #10 IBF
103	527110.079	817997.244	N 1/4 31, T5N R3W, RR SPK
120	542921.278	833688.879	S 1/4 19, T5N R2W, #8 IBF
121	542332.878	831066.794	SW COR 30, T5N R2W, #8 IBF
123	532305.598	831170.971	SW COR 30, T5N R2W, #8 IBF
124	537613.096	828485.867	N 1/4 25, T5N R2W, #8 IBF
125	534961.184	828503.133	CENTER 25, T5N R3W, #8-CAP
128	537617.965	831199.648	S 1/4 19, T5N R2W, #8-CAP
127	529674.328	831199.648	E 1/4 36, T5N R3W, #8-CAP
128	529669.048	831199.707	W 1/4 31, T5N R2W, #8-CAP
129	529871.206	828556.981	S 1/4 36, T5N R2W, #8-CAP
130	529858.574	828556.981	CENTER 36, T5N R3W, #8-CAP
131	529894.401	823250.830	CENTER 35, T5N R3W, #8-CAP
132	529357.064	823254.496	N 1/4 35, T5N R3W, #8-CAP
138	529756.388	817994.871	CENTER 34, T5N R3W, #8-CAP
142	534969.586	831144.840	W 1/4 30, T5N R3W, #8-CAP
143	540292.359	836376.619	E 1/4 19, T5N R2W, #8-CAP
144	540276.034	831092.951	W 1/4 19, T5N R2W, #8-CAP
145	540274.714	831092.954	E 1/4 24, T5N R3W, #8-CAP
146	540269.228	833722.475	CENTER 19, T5N R2W, #8-CAP

SURVEYOR'S CERTIFICATE:
 I, Aaron J. Austin, Registered Wisconsin Land Surveyor, hereby certify:
 That the corners shown on this survey were surveyed, mapped and monumented as shown on this plat by me or under my direct supervision.
 That this survey was prepared under the instructions of Ray Polkinghorn, Project Manager of SEH Inc.
 That to the best of my knowledge and belief, this plat is an accurate representation thereof.
 That all plans that do not show a seal imprint in red ink may contain unauthorized alterations.
 The certification contained on this document shall not apply to any copies.

Dated this 14th day of March, 2012
 Aaron J. Austin, S-29222



LEGEND

- ⊗ No. 6 rebar found with Grant County Aluminum Cap
- ⊕ No. 7 rebar found with Grant County Aluminum Cap
- ⊖ No. 8 rebar found with Grant County Aluminum Cap
- ⊙ No. 6 rebar found
- 3/4" Square Bar found
- No. 10 rebar found
- ▣ Aluminum Monument found
- ▲ 1" diameter iron pipe found
- △ 2" diameter iron pipe found
- ⊠ No. 8 rebar found
- ⊞ Railroad spike found
- ⊗ No. 8 x 30" rebar set with Grant County Aluminum Cap

NORTH

SOUTH

COORDINATES SHOWN HEREON ARE GRANT COUNTY COORDINATES AS PROVIDED BY THE WISCONSIN DEPARTMENT OF TRANSPORTATION.

0 900 1800
 SCALE 1" = 900'

PREPARED FOR: SEH INC.
 I.D. 1650-06-03
 USH 61 LANCASTER-FENNIMORE
 GRANT COUNTY, WISCONSIN

Austin Engineering LLC
 austinengineeringllc.com
 4211 HWY 81 E
 LANCASTER, WI 53813
 PHONE 608-723-6363
 FAX 608-723-6702

JOB NO: 11a192
 G:\GRANTDOT\HWY61B
 H:\PLAT\GRANTDOT\11a192-HWY61B-SEH(a).DWG

FIELDBOOK: TDSR
 DRAWN BY: AJ AUSTIN
 CREW: BS-59