

PLAT OF SURVEY

LOCATED IN THE NW 1/4 OF THE NW 1/4 OF SECTION 14, T4N R2W, TOWN OF ELLENBORO, GRANT COUNTY, WISCONSIN

LEGEND

- ☐ Aluminum Monument found with Grant County Aluminum Cap
- ⊕ No. 8 rebar found with Grant County Aluminum Cap
- No. 6 rebar found
- No. 6 x 24" rebar set with cap
- + No monument set
- [-] Property described in Volume and Page, Grant County Registry

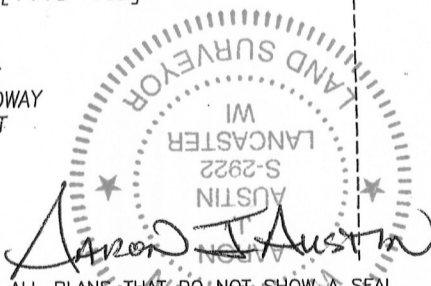
TRACT 1
0.36± ACRE
15,653± SQ.FT.

PREVIOUS SURVEY
BY LARRY AUSTIN
DATED 5--7--2009
JOB NO. 09s082

PREVIOUS SURVEY
BY LARRY AUSTIN
DATED 5--7--2009
JOB NO. 09s082

PREVIOUS SURVEY
BY LARRY AUSTIN
DATED 5--7--2009
JOB NO. 09s082

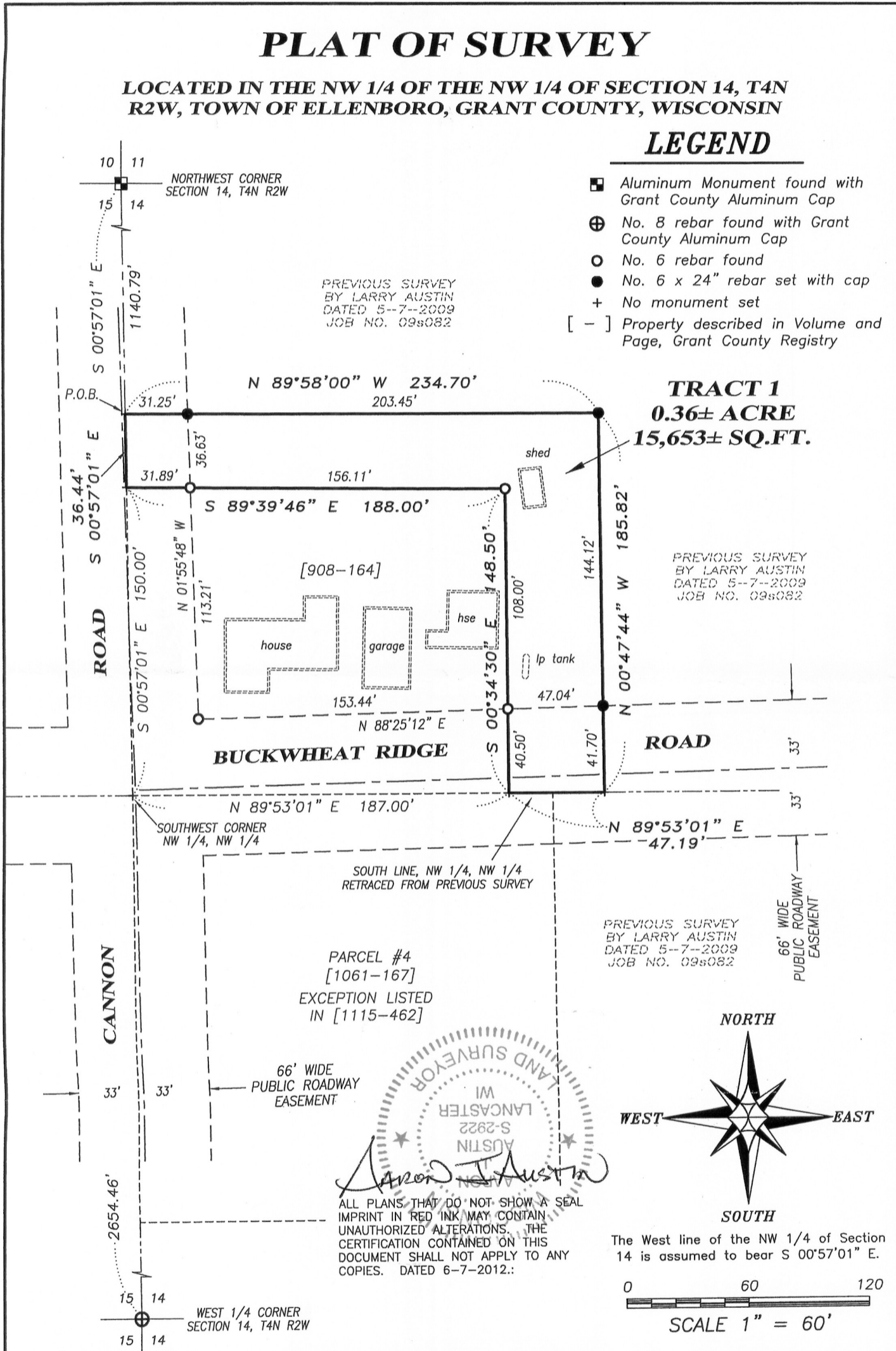
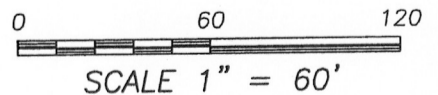
PARCEL #4
[1061-167]
EXCEPTION LISTED
IN [1115-462]



ALL PLANS THAT DO NOT SHOW A SEAL IMPRINT IN RED INK MAY CONTAIN UNAUTHORIZED ALTERATIONS. THE CERTIFICATION CONTAINED ON THIS DOCUMENT SHALL NOT APPLY TO ANY COPIES. DATED 6-7-2012.



The West line of the NW 1/4 of Section 14 is assumed to bear S 00°57'01" E.



Austin Engineering LLC
austineengineeringllc.com

4211 HWY 81 E, LANCASTER, WI 53813
PHONE: 608-723-6363 FAX: 608-723-6702

Prepared for: ERIC AND LINDA VANATTA

JOB NO: 12s066
G:\T4NR2W\24B
H:\PLAT\T4NR2W\14\12s066-VANATTA

FIELDBOOK: 1201
DRAWN BY: AJ AUSTIN
CREW: BS-SB

SHEET 1 OF 2

OCT 03 2012