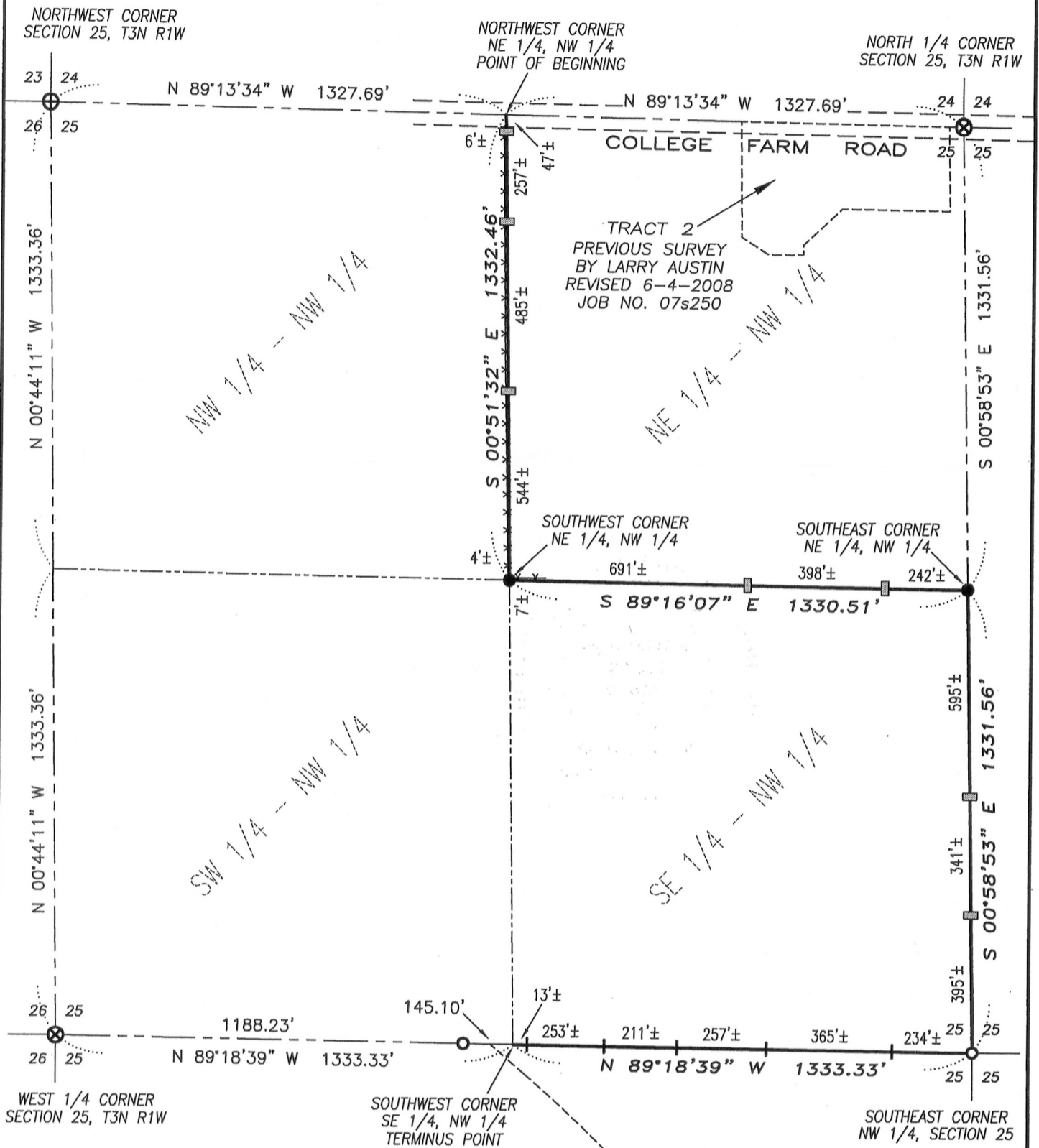


# PLAT OF SURVEY

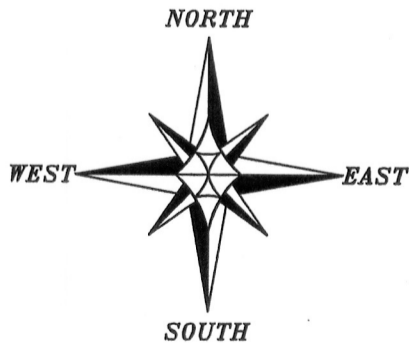


TRACT 2  
PREVIOUS SURVEY  
BY LARRY AUSTIN  
REVISED 6-4-2008  
JOB NO. 07s250

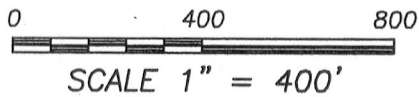
PARCEL #1  
PREVIOUS SURVEY  
BY LARRY AUSTIN  
DATED 8-28-1987

## LEGEND

- ⊕ No. 8 rebar found with Grant County Aluminum Cap
- ⊗ No. 7 rebar found
- No. 6 rebar found
- No. 6 x 24" rebar set with cap
- + Steel T-post found
- 1 1/2" x 1" x 4' Wood lath set



The North line of the NW 1/4 of Section 25 is assumed to bear N 89°13'34" W.



ALL PLANS THAT DO NOT SHOW A SEAL IMPRINT IN RED INK MAY CONTAIN UNAUTHORIZED ALTERATIONS. THE CERTIFICATION CONTAINED ON THIS DOCUMENT SHALL NOT APPLY TO ANY COPIES. DATED: 4-18-2012

MAY 31 2012



**Austin Engineering LLC**  
austinengineeringllc.com

4211 HWY 81 E, LANCASTER, WI 53813  
PHONE: 608-723-6363 FAX: 608-723-6702

Prepared for: **MYRON TRANEL**

JOB NO: 12s036  
G:\T3NR1W\29DOT  
H:\PLAT\T3NR1W\25\12s036-TRANEL

FIELDBOOK: TDSR  
DRAWN BY: AJ AUSTIN  
CREW: BS-SB