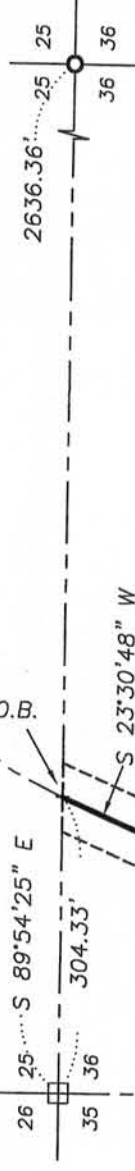


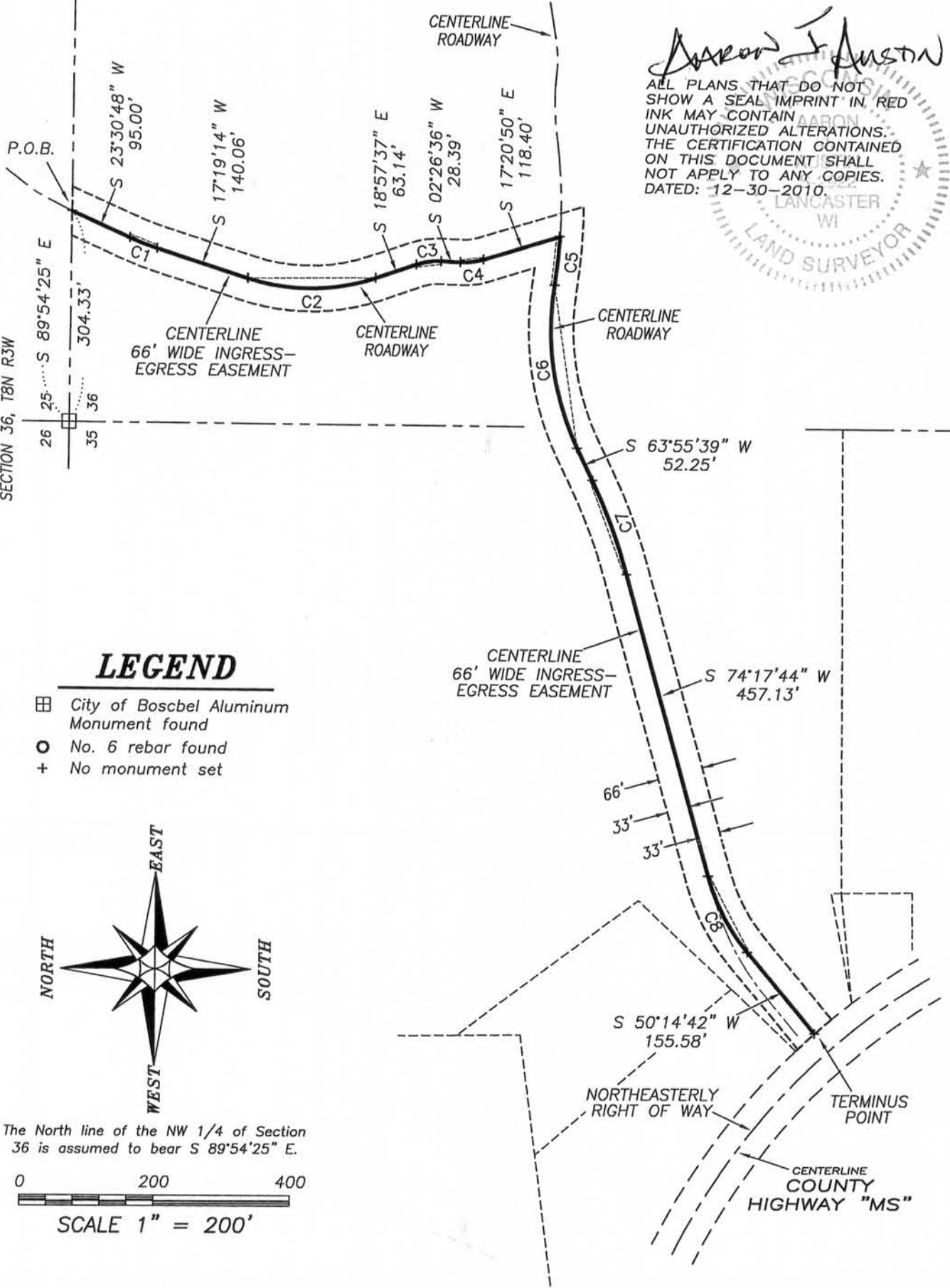
PLAT OF SURVEY

CURVE	RADIUS	ARC	CHORD	CHORD BEARING
C1	400.00'	43.24'	43.21'	S 20°25'01" W
C2	300.00'	189.97'	186.81'	S 00°49'12" E
C3	100.00'	37.36'	37.14'	S 08°15'30" E
C4	100.00'	34.54'	34.37'	S 07°27'07" E
C5	736.13'	71.72'	71.69'	N 84°12'15" W
C6	400.00'	241.97'	238.30'	S 81°15'26" W
C7	800.00'	144.77'	144.57'	S 69°06'41" W
C8	300.00'	125.93'	125.01'	S 62°16'13" W

NORTH 1/4 CORNER SECTION 36, T8N R3W
 NORTHWEST CORNER SECTION 36, T8N R3W

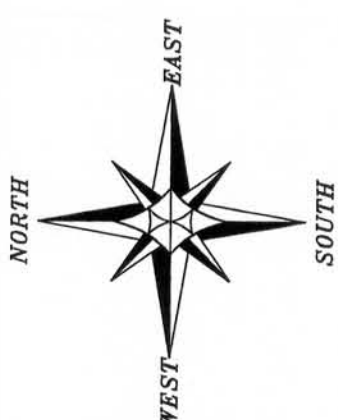


Aaron J Austin
 ALL PLANS THAT DO NOT SHOW A SEAL IMPRINT IN RED INK MAY CONTAIN UNAUTHORIZED ALTERATIONS. THE CERTIFICATION CONTAINED ON THIS DOCUMENT SHALL NOT APPLY TO ANY COPIES. DATED: 12-30-2010.
 AARON J. AUSTIN
 LANCASTER WI
 LAND SURVEYOR

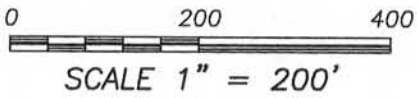


LEGEND

- ▣ City of Boschel Aluminum Monument found
- No. 6 rebar found
- + No monument set



The North line of the NW 1/4 of Section 36 is assumed to bear S 89°54'25" E.



Austin Engineering LLC
 austinengineeringllc.com

Prepared for: **BRIAN KENDALL**

4211 HWY 81 E, LANCASTER, WI 53813
 PHONE: 608-723-6363 FAX: 608-723-6702

JOB NO: 10s300
 G:\T8NR3W\HWY133
 H:\PLAT\T8NR3W\36\10s300-KENDALL

FIELDBOOK: TDS RANGER
 DRAWN BY: AJ AUSTIN
 CREW: BS-BD