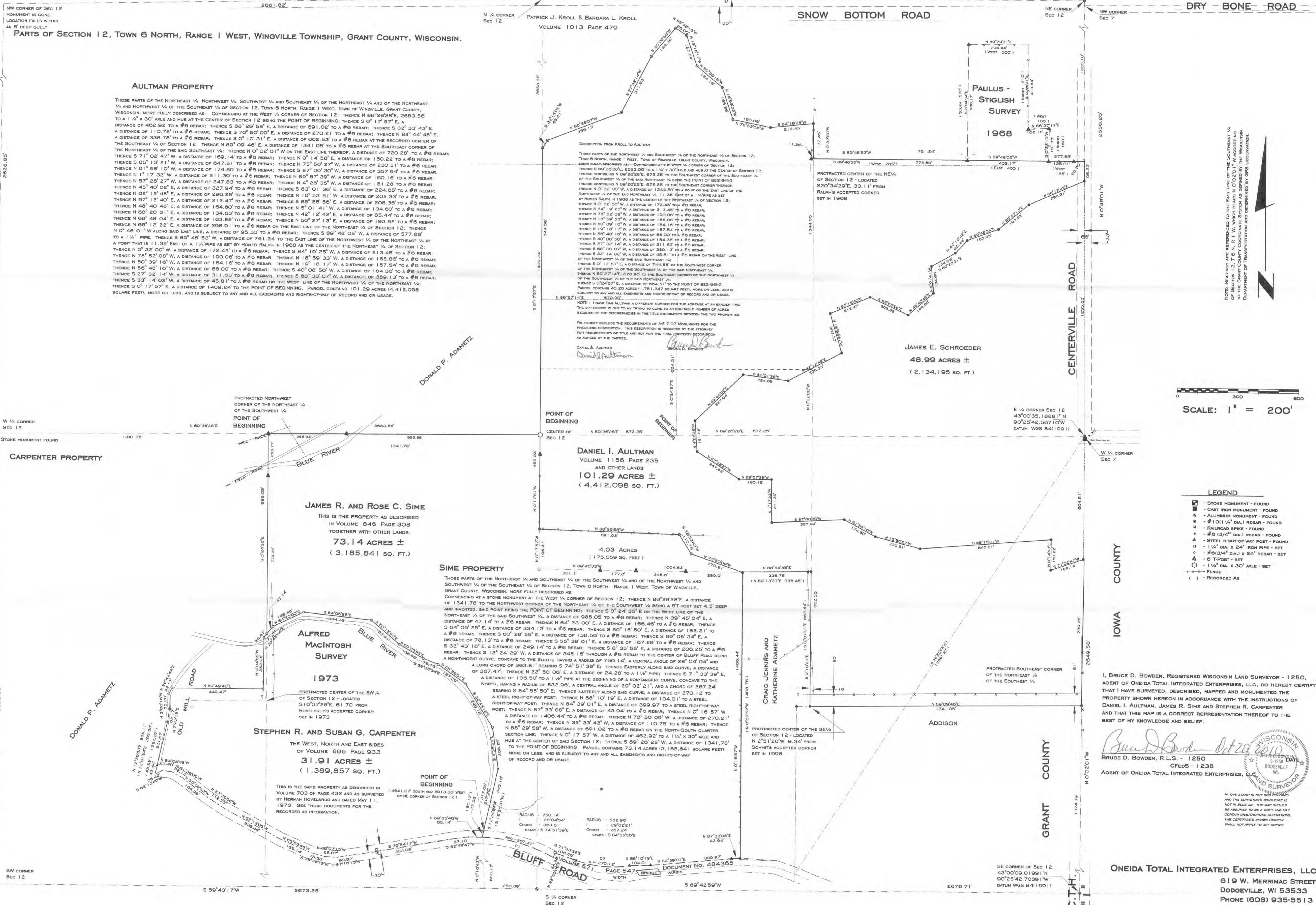


PLAT OF SURVEY FOR DANIEL I. AULTMAN, JAMES R. SIME AND STEPHEN R. CARPENTER



AULTMAN PROPERTY

THOSE PARTS OF THE NORTHEAST 1/4, NORTHWEST 1/4, SOUTHWEST 1/4 AND SOUTHEAST 1/4 OF THE NORTHEAST 1/4 AND OF THE NORTHEAST 1/4 AND NORTHWEST 1/4 OF THE SOUTHWEST 1/4 OF SECTION 12, TOWN 6 NORTH, RANGE 1 WEST, TOWN OF WINGVILLE, GRANT COUNTY, WISCONSIN, MORE FULLY DESCRIBED AS: COMMENCING AT THE WEST 1/4 CORNER OF SECTION 12; THENCE N 89°26'28"E, 2663.56' TO A 1 1/2" X 30" AXLE AND HUB AT THE CENTER OF SECTION 12 BEING THE POINT OF BEGINNING; THENCE S 0° 17' 57" E, A DISTANCE OF 462.92' TO A #6 REBAR; THENCE S 88° 29' 58" E, A DISTANCE OF 691.02' TO A #6 REBAR; THENCE S 32° 33' 43" E, A DISTANCE OF 110.75' TO A #6 REBAR; THENCE S 70° 50' 09" E, A DISTANCE OF 270.21' TO A #6 REBAR; THENCE N 88° 44' 45" E, A DISTANCE OF 338.78' TO A #6 REBAR; THENCE S 0° 10' 31" E, A DISTANCE OF 602.53' TO A #6 REBAR AT THE RECORDED CENTER OF THE SOUTHWEST 1/4 OF SECTION 12; THENCE N 89° 09' 46" E, A DISTANCE OF 1341.05' TO A #6 REBAR AT THE RECORDED CENTER OF THE NORTHEAST 1/4 OF THE SAID SOUTHWEST 1/4; THENCE N 0° 02' 01" W ON THE EAST LINE THEREOF, A DISTANCE OF 720.28' TO A #6 REBAR; THENCE S 71° 02' 47" W, A DISTANCE OF 169.14' TO A #6 REBAR; THENCE N 0° 14' 58" E, A DISTANCE OF 150.22' TO A #6 REBAR; THENCE S 85° 13' 21" W, A DISTANCE OF 647.51' TO A #6 REBAR; THENCE N 75° 50' 27" W, A DISTANCE OF 230.51' TO A #6 REBAR; THENCE N 61° 58' 10" W, A DISTANCE OF 174.80' TO A #6 REBAR; THENCE S 87° 00' 30" W, A DISTANCE OF 357.94' TO A #6 REBAR; THENCE N 1° 17' 32" W, A DISTANCE OF 211.39' TO A #6 REBAR; THENCE N 85° 57' 39" W, A DISTANCE OF 160.18' TO A #6 REBAR; THENCE N 57° 28' 27" W, A DISTANCE OF 247.83' TO A #6 REBAR; THENCE N 42° 28' 35" W, A DISTANCE OF 151.28' TO A #6 REBAR; THENCE N 45° 40' 02" E, A DISTANCE OF 327.94' TO A #6 REBAR; THENCE S 83° 01' 36" E, A DISTANCE OF 224.65' TO A #6 REBAR; THENCE N 62° 12' 48" E, A DISTANCE OF 296.28' TO A #6 REBAR; THENCE N 16° 53' 51" W, A DISTANCE OF 202.33' TO A #6 REBAR; THENCE N 67° 12' 40" E, A DISTANCE OF 212.47' TO A #6 REBAR; THENCE S 65° 55' 56" E, A DISTANCE OF 208.36' TO A #6 REBAR; THENCE N 48° 40' 48" E, A DISTANCE OF 134.53' TO A #6 REBAR; THENCE N 42° 12' 42" E, A DISTANCE OF 151.28' TO A #6 REBAR; THENCE N 60° 20' 31" E, A DISTANCE OF 163.85' TO A #6 REBAR; THENCE N 50° 27' 13" E, A DISTANCE OF 137.54' TO A #6 REBAR; THENCE N 66° 12' 22" E, A DISTANCE OF 296.91' TO A #6 REBAR ON THE EAST LINE OF THE NORTHEAST 1/4 OF SECTION 12; THENCE N 0° 46' 01" W ALONG SAID EAST LINE, A DISTANCE OF 95.33' TO A #6 REBAR; THENCE S 89° 48' 05" W, A DISTANCE OF 577.68' TO A 1 1/2" PIPE; THENCE S 89° 48' 53" W, A DISTANCE OF 761.24' TO THE EAST LINE OF THE NORTHEAST 1/4 OF THE NORTHEAST 1/4 AT A POINT THAT IS 11.35' EAST OF A 1 1/2" PIPE AS SET BY HOMER RALPH IN 1968 AS THE CENTER OF THE NORTHEAST 1/4 OF SECTION 12; THENCE N 0° 32' 00" W, A DISTANCE OF 172.45' TO A #6 REBAR; THENCE N 84° 19' 25" W, A DISTANCE OF 213.45' TO A #6 REBAR; THENCE N 78° 52' 08" W, A DISTANCE OF 190.00' TO A #6 REBAR; THENCE N 18° 59' 33" W, A DISTANCE OF 165.80' TO A #6 REBAR; THENCE N 50° 39' 10" W, A DISTANCE OF 164.10' TO A #6 REBAR; THENCE N 18° 18' 17" W, A DISTANCE OF 187.54' TO A #6 REBAR; THENCE N 50° 48' 18" W, A DISTANCE OF 66.00' TO A #6 REBAR; THENCE S 40° 08' 50" W, A DISTANCE OF 184.30' TO A #6 REBAR; THENCE S 27° 32' 14" W, A DISTANCE OF 311.03' TO A #6 REBAR; THENCE S 68° 38' 07" W, A DISTANCE OF 389.13' TO A #6 REBAR; THENCE N 33° 14' 02" W, A DISTANCE OF 45.81' TO A #6 REBAR ON THE WEST LINE OF THE NORTHEAST 1/4 OF SECTION 12; THENCE S 3° 17' 57" E, A DISTANCE OF 1409.24' TO THE POINT OF BEGINNING. PARCEL CONTAINS 101.29 ACRES (4,412,098 SQUARE FEET), MORE OR LESS, AND IS SUBJECT TO ANY AND ALL EASEMENTS AND RIGHTS-OF-WAY OF RECORD AND OR USAGE.

DESCRIPTION FROM KROLL TO AULTMAN
THOSE PARTS OF THE NORTHEAST 1/4 AND SOUTHWEST 1/4 OF THE NORTHEAST 1/4 OF SECTION 12, TOWN 6 NORTH, RANGE 1 WEST, TOWN OF WINGVILLE, GRANT COUNTY, WISCONSIN, MORE FULLY DESCRIBED AS: COMMENCING AT THE WEST 1/4 CORNER OF SECTION 12; THENCE CONTINUING N 89° 26' 28" E, 672.25' TO THE SOUTHWEST CORNER OF THE SOUTHWEST 1/4 OF THE SOUTHWEST 1/4 OF THE SAID NORTHEAST 1/4 BEING THE POINT OF BEGINNING; THENCE CONTINUING N 89° 26' 28" E, 672.25' TO THE SOUTHWEST CORNER THEREOF; THENCE N 0° 32' 00" W, A DISTANCE OF 1344.80' TO A POINT ON THE EAST LINE OF THE NORTHEAST 1/4 OF THE SAID NORTHEAST 1/4, 11.35' EAST OF A 1 1/2" PIPE AS SET BY HOMER RALPH IN 1968 AS THE CENTER OF THE NORTHEAST 1/4 OF SECTION 12; THENCE N 0° 32' 00" W, A DISTANCE OF 172.45' TO A #6 REBAR; THENCE S 84° 19' 25" W, A DISTANCE OF 213.45' TO A #6 REBAR; THENCE N 78° 52' 08" W, A DISTANCE OF 190.00' TO A #6 REBAR; THENCE N 18° 59' 33" W, A DISTANCE OF 165.80' TO A #6 REBAR; THENCE N 50° 39' 10" W, A DISTANCE OF 164.10' TO A #6 REBAR; THENCE N 18° 18' 17" W, A DISTANCE OF 187.54' TO A #6 REBAR; THENCE N 50° 48' 18" W, A DISTANCE OF 66.00' TO A #6 REBAR; THENCE S 40° 08' 50" W, A DISTANCE OF 184.30' TO A #6 REBAR; THENCE S 27° 32' 14" W, A DISTANCE OF 311.03' TO A #6 REBAR; THENCE S 68° 38' 07" W, A DISTANCE OF 389.13' TO A #6 REBAR; THENCE N 33° 14' 02" W, A DISTANCE OF 45.81' TO A #6 REBAR ON THE WEST LINE OF THE NORTHEAST 1/4 OF THE SAID NORTHEAST 1/4; THENCE S 0° 17' 57" E, A DISTANCE OF 744.80' TO THE SOUTHWEST CORNER OF THE NORTHEAST 1/4 OF THE SOUTHWEST 1/4 OF THE SAID NORTHEAST 1/4; THENCE N 89° 27' 14" E, 670.90' TO THE SOUTHWEST CORNER OF THE NORTHEAST 1/4 OF THE SOUTHWEST 1/4 OF THE SAID NORTHEAST 1/4; THENCE S 0° 24' 35" E, A DISTANCE OF 664.51' TO THE POINT OF BEGINNING. PARCEL CONTAINS 48.99 ACRES (1,134,195 SQ. FT.), MORE OR LESS, AND IS SUBJECT TO ANY AND ALL EASEMENTS AND RIGHTS-OF-WAY OF RECORD AND OR USAGE.

JAMES E. SCHROEDER
48.99 ACRES ±
(1,134,195 SQ. FT.)

DANIEL I. AULTMAN
VOLUME 1156 PAGE 235
AND OTHER LANDS
101.29 ACRES ±
(4,412,098 SQ. FT.)

JAMES R. AND ROSE C. SIME
THIS IS THE PROPERTY AS DESCRIBED
IN VOLUME 846 PAGE 308
TOGETHER WITH OTHER LANDS.
73.14 ACRES ±
(3,185,841 SQ. FT.)

SIME PROPERTY
THOSE PARTS OF THE NORTHEAST 1/4 AND SOUTHWEST 1/4 OF THE SOUTHWEST 1/4 AND OF THE NORTHWEST 1/4 AND SOUTHWEST 1/4 OF THE SOUTHWEST 1/4 OF SECTION 12, TOWN 6 NORTH, RANGE 1 WEST, TOWN OF WINGVILLE, GRANT COUNTY, WISCONSIN, MORE FULLY DESCRIBED AS: COMMENCING AT A STONE MONUMENT AT THE WEST 1/4 CORNER OF SECTION 12; THENCE N 89° 26' 28" E, A DISTANCE OF 1341.78' TO THE NORTHWEST CORNER OF THE NORTHEAST 1/4 OF THE SOUTHWEST 1/4 BEING A 6" POST SET 4.5" DEEP AND INVERTED, SAID POINT BEING THE POINT OF BEGINNING; THENCE S 0° 24' 35" E ON THE WEST LINE OF THE NORTHEAST 1/4 OF THE SAID SOUTHWEST 1/4, A DISTANCE OF 985.05' TO A #6 REBAR; THENCE N 39° 45' 04" E, A DISTANCE OF 47.14' TO A #6 REBAR; THENCE N 64° 23' 00" E, A DISTANCE OF 166.46' TO A #6 REBAR; THENCE S 84° 05' 25" E, A DISTANCE OF 334.13' TO A #6 REBAR; THENCE S 50° 15' 50" E, A DISTANCE OF 182.21' TO A #6 REBAR; THENCE S 60° 26' 55" E, A DISTANCE OF 138.56' TO A #6 REBAR; THENCE S 69° 05' 34" E, A DISTANCE OF 107.20' TO A #6 REBAR; THENCE S 87° 35' 01" E, A DISTANCE OF 206.25' TO A #6 REBAR; THENCE S 32° 43' 18" E, A DISTANCE OF 249.14' TO A #6 REBAR; THENCE N 32° 33' 43" W, A DISTANCE OF 110.75' TO A #6 REBAR ON THE NORTH-SOUTH QUARTER SECTION LINE; THENCE N 0° 17' 57" W, A DISTANCE OF 462.92' TO A 1 1/2" X 30" AXLE AND HUB AT THE CENTER OF SAID SECTION 12; THENCE S 89° 26' 28" W, A DISTANCE OF 1341.78' TO THE POINT OF BEGINNING. PARCEL CONTAINS 73.14 ACRES (3,185,841 SQUARE FEET), MORE OR LESS, AND IS SUBJECT TO ANY AND ALL EASEMENTS AND RIGHTS-OF-WAY OF RECORD AND OR USAGE.

STEPHEN R. AND SUSAN G. CARPENTER
THE WEST, NORTH AND EAST SIDES
OF VOLUME 896 PAGE 933
31.91 ACRES ±
(1,389,857 SQ. FT.)

DRY BONE ROAD

SNOW BOTTOM ROAD

CENTERVILLE ROAD

IOWA COUNTY

IOWA

GRANT COUNTY

GRANT COUNTY

SCALE: 1" = 200'

- LEGEND
- STONE MONUMENT - FOUND
- CAST IRON MONUMENT - FOUND
- ALUMINUM MONUMENT - FOUND
- #10 (1 1/2" DIA.) REBAR - FOUND
- RAILROAD SPIKE - FOUND
- #6 (3/4" DIA.) REBAR - FOUND
- STEEL RIGHT-OF-WAY POST - FOUND
- 1 1/2" DIA. X 24" IRON PIPE - SET
- #6 (3/4" DIA.) X 24" REBAR - SET
- 1 1/2" DIA. X 30" AXLE - SET
- FENCE
- () - RECORDED AS

I, BRUCE D. BOWDEN, REGISTERED WISCONSIN LAND SURVEYOR - 1250, AGENT OF ONEIDA TOTAL INTEGRATED ENTERPRISES, LLC, DO HEREBY CERTIFY THAT I HAVE SURVEYED, DESCRIBED, MAPPED AND MONUMENTED THE PROPERTY SHOWN HEREON IN ACCORDANCE WITH THE INSTRUCTIONS OF DANIEL I. AULTMAN, JAMES R. SIME AND STEPHEN R. CARPENTER AND THAT THIS MAP IS A CORRECT REPRESENTATION THEREOF TO THE BEST OF MY KNOWLEDGE AND BELIEF.

BRUCE D. BOWDEN, R.L.S. - 1250
CFedS - 1238
AGENT OF ONEIDA TOTAL INTEGRATED ENTERPRISES, LLC



ONEIDA TOTAL INTEGRATED ENTERPRISES, LLC
619 W. MERRIMAC STREET
DODGEVILLE, WI 53533
PHONE (608) 935-5513
JOB NO. 30012