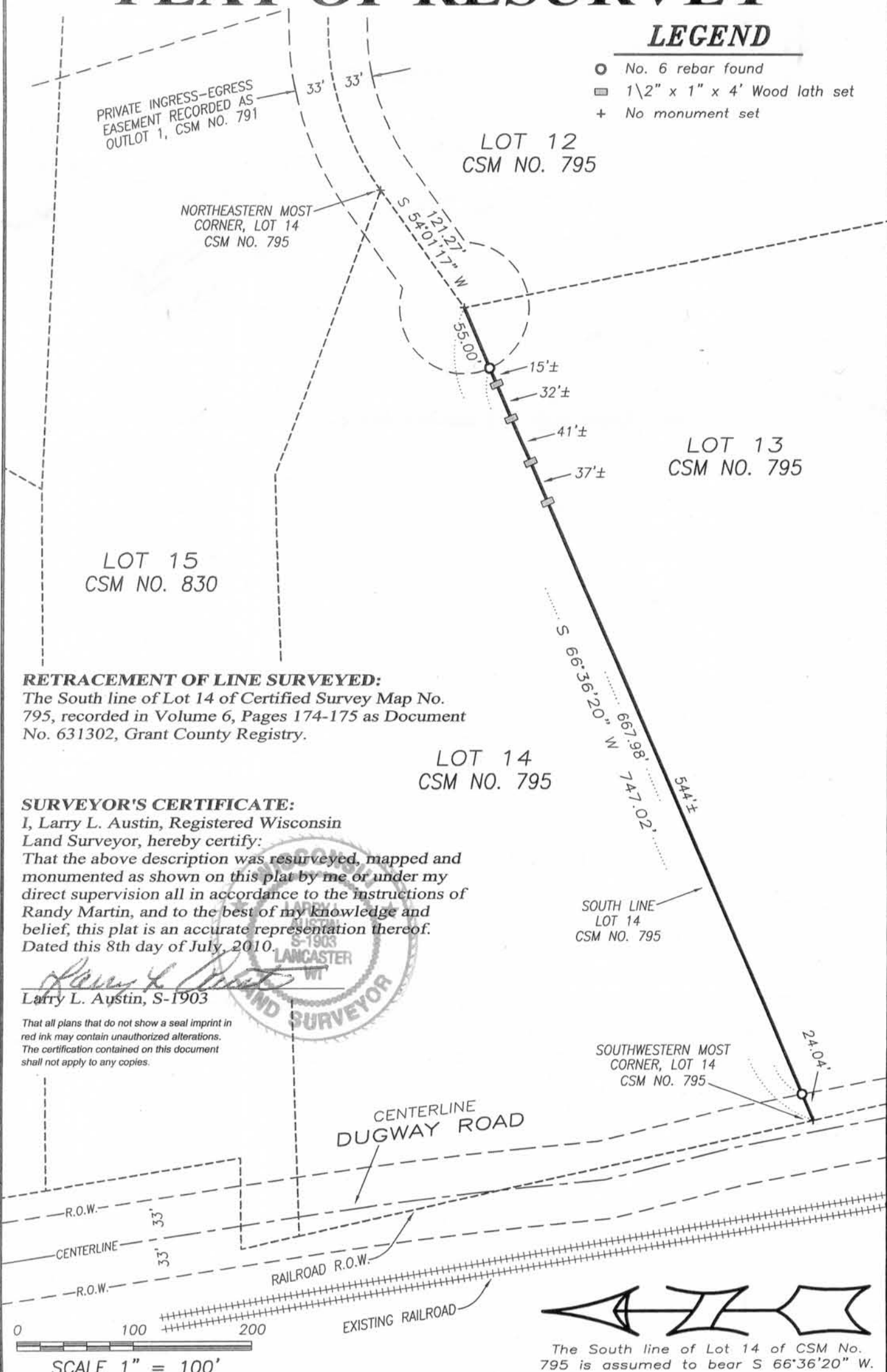


PLAT OF RESURVEY

LEGEND

- No. 6 rebar found
- ▣ 1 1/2" x 1" x 4' Wood lath set
- + No monument set

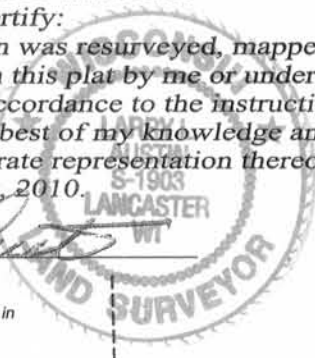


RETRACEMENT OF LINE SURVEYED:
 The South line of Lot 14 of Certified Survey Map No. 795, recorded in Volume 6, Pages 174-175 as Document No. 631302, Grant County Registry.

SURVEYOR'S CERTIFICATE:
 I, Larry L. Austin, Registered Wisconsin Land Surveyor, hereby certify:
 That the above description was resurveyed, mapped and monumented as shown on this plat by me or under my direct supervision all in accordance to the instructions of Randy Martin, and to the best of my knowledge and belief, this plat is an accurate representation thereof.
 Dated this 8th day of July, 2010.

Larry L. Austin
 Larry L. Austin, S-1903

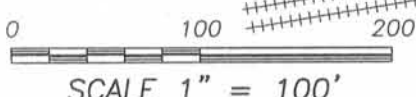
That all plans that do not show a seal imprint in red ink may contain unauthorized alterations. The certification contained on this document shall not apply to any copies.



SOUTH LINE LOT 14 CSM NO. 795

SOUTHWESTERN MOST CORNER, LOT 14 CSM NO. 795

CENTERLINE DUGWAY ROAD



The South line of Lot 14 of CSM No. 795 is assumed to bear S 66°36'20" W.

Austin Engineering LLC
 austinengineeringllc.com
 4211 HWY 81 E, LANCASTER, WI 53813
 PHONE: 608-723-6363 FAX: 608-723-6702

Prepared for: **RANDY MARTIN**

JOB NO: 10s155
 FIELDBOOK: TDS RANGER
 G:\T5NR6W\34
 H:\PLAT\T5NR6W\34\10s155-MARTIN

DRAWN BY: AJ AUSTIN
 APPROVED: LL AUSTIN
 CREW: SB-BD

SHEET 1 OF 1

AUG 17 2010