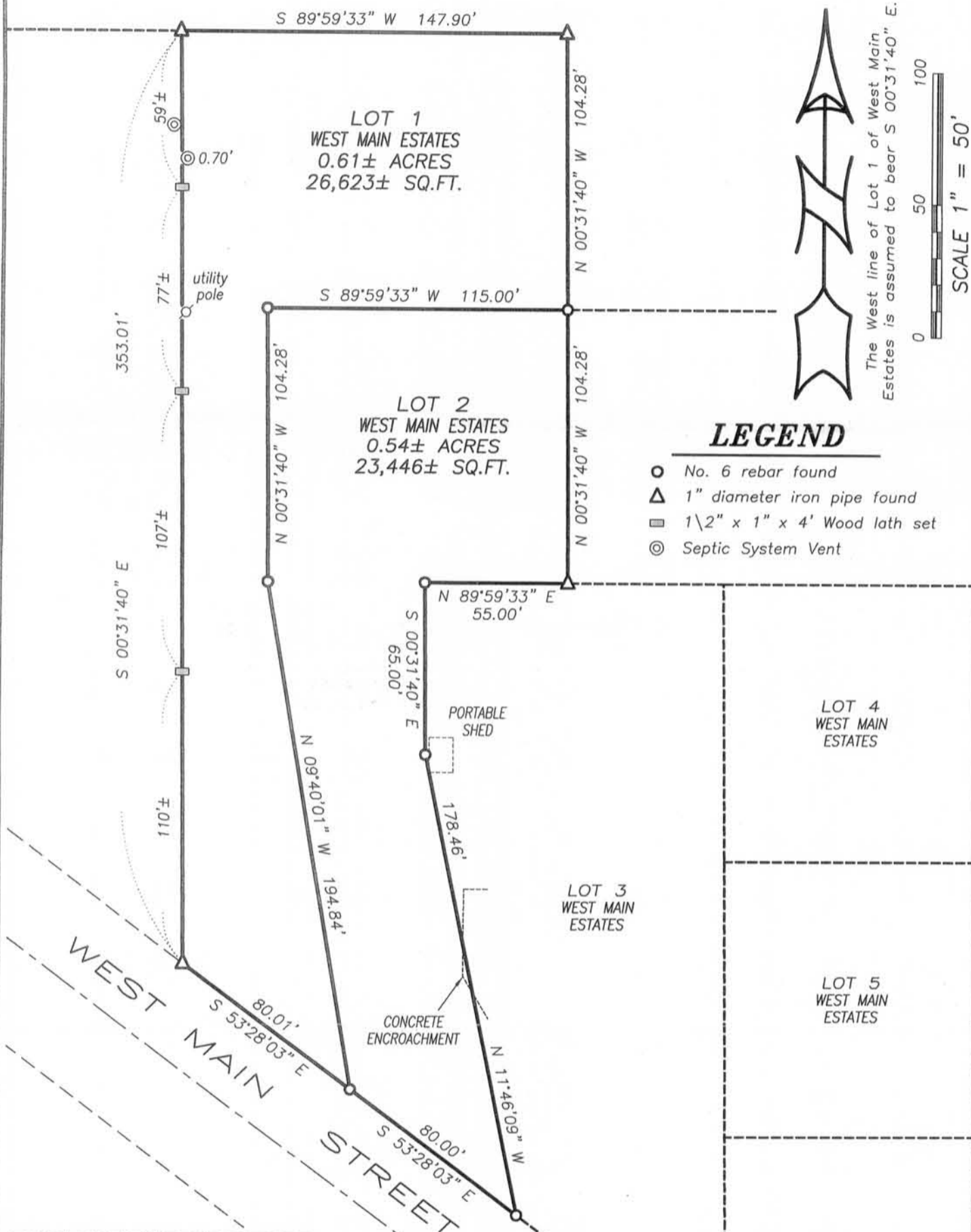


PLAT OF RESURVEY



DESCRIPTION RESURVEYED:

Lot 1 and Lot 2 of West Main Estates, City of Platteville, Grant County, Wisconsin, according to the recorded map or plat thereof.

SURVEYOR'S CERTIFICATE:

I, Larry L. Austin, Registered Wisconsin Land Surveyor, hereby certify:
That the above description was surveyed, mapped and monumented as shown on this plat by me or under my direct supervision all in accordance to the instructions of Gary Osterholz and to the best of my knowledge and belief, this plat is an accurate representation thereof.

Dated this 19th day of July, 2010

Larry L. Austin
Larry L. Austin, S-1903

That all plans that do not show a seal imprint in red ink may contain unauthorized alterations. The certification contained on this document shall not apply to any copies.



Prepared for: O & S LLC

Austin Engineering LLC
austinengineeringllc.com

4211 HWY 81 E, LANCASTER, WI 53813
PHONE: 608-723-6363 FAX: 608-723-6702

JOB NO: 10S177
FIELDBOOK: TDS RANGER
G:\T3NR1W\LYGHT
H:\PLAT\PLVILLE\WESTMAIN\10s177-0&S

DRAWN BY: AJ AUSTIN
APPROVED: LL AUSTIN
CREW: BS-SA-BD

SHEET 1 OF 1

AUG 17 2010