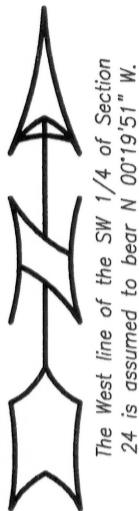


# PLAT OF SURVEY

NORTH 1/4 CORNER  
SECTION 24, T6N R3W



## LEGEND

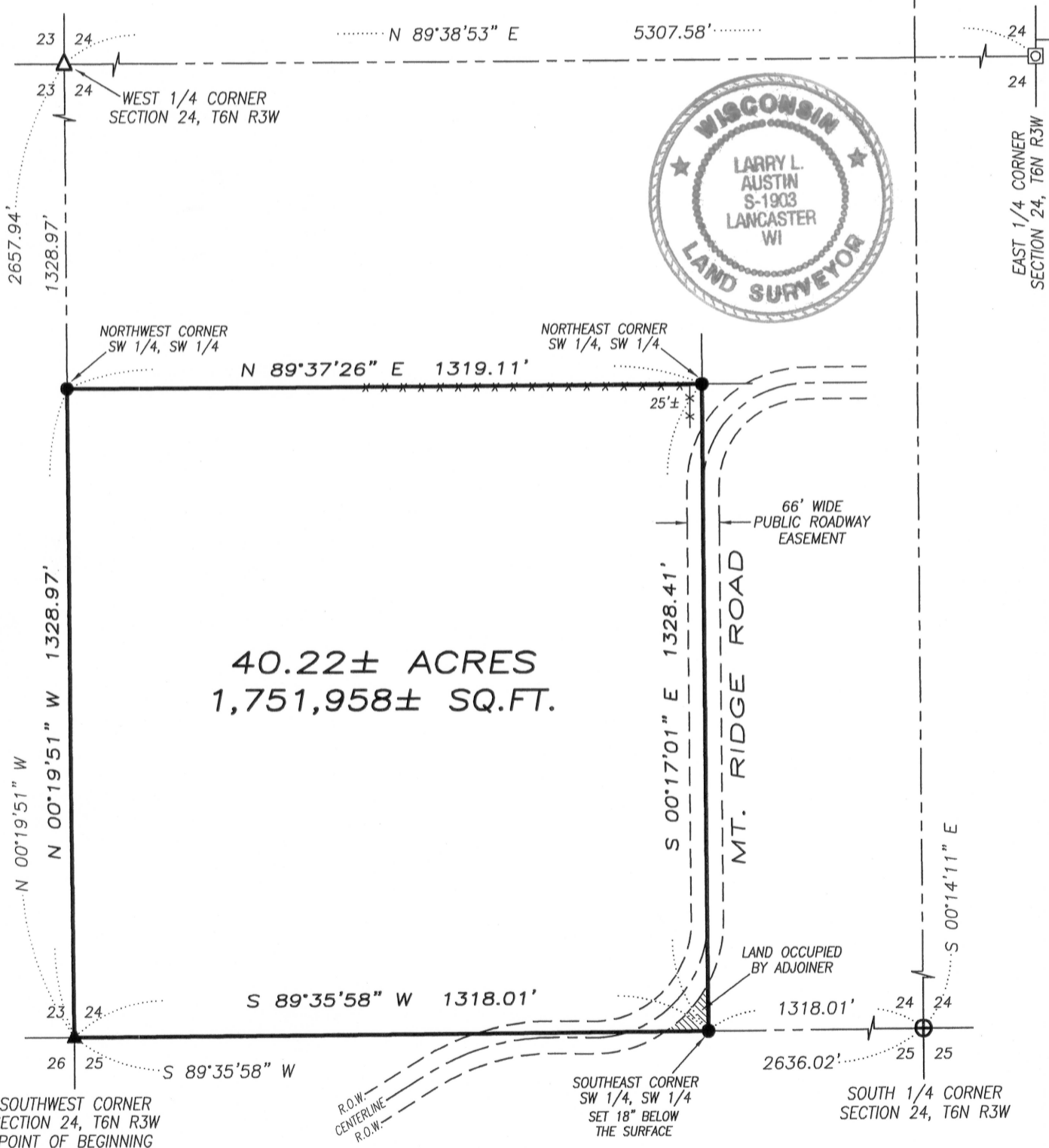
- ⊕ No. 8 rebar found with Grant County Aluminum Cap
- ⊞ Bernsten Cast Aluminum Monument found
- △ 1" diameter iron pipe found
- ▲ 2" diameter iron pipe found
- ⊠ No. 8 rebar found
- No. 6 x 24" rebar set with cap
- x-x- Approximate location of fence



SCALE 1" = 300'

All plans that do not show a seal imprint in red ink may contain unauthorized alterations. The certification contained on this document shall not apply to any copies. Dated May 8, 2009.

*Larry L. Austin*



SOUTHWEST CORNER  
SECTION 24, T6N R3W  
POINT OF BEGINNING

SOUTHEAST CORNER  
SW 1/4, SW 1/4  
SET 18" BELOW  
THE SURFACE

SOUTH 1/4 CORNER  
SECTION 24, T6N R3W



**Austin Engineering LLC**

Prepared For: DAN CAUFFMAN

4211 HWY 81 E, LANCASTER, WI 53813  
PHONE 608-723-6363 FAX 608-723-6702

JOB NO: 09s069-CAUFFMAN  
FIELDBOOK: TDS RANGER  
G:\T6NR2W\29  
H:\PLAT\T6NR3W\24\09s069-CAUFFMAN

DRAWN BY: AJ AUSTIN  
APPROVED: LL AUSTIN  
CREW: BS-SA-BD

SHEET 1 OF 2