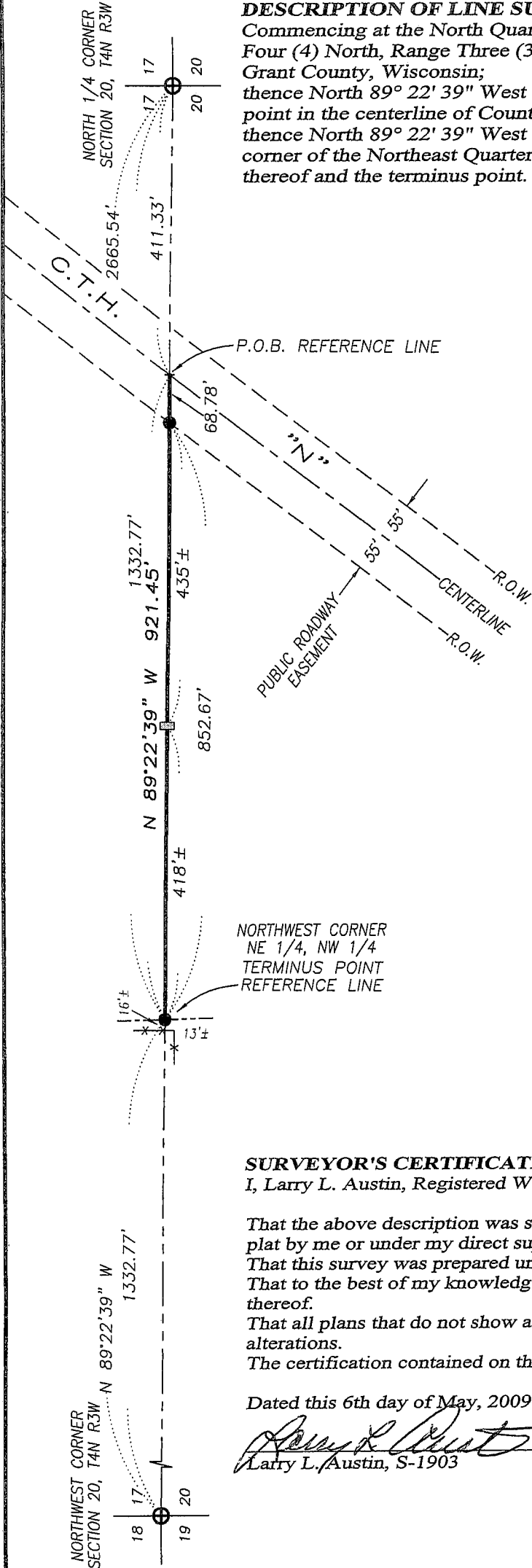


PLAT OF SURVEY

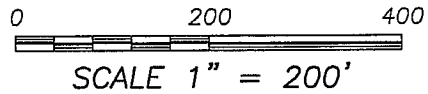
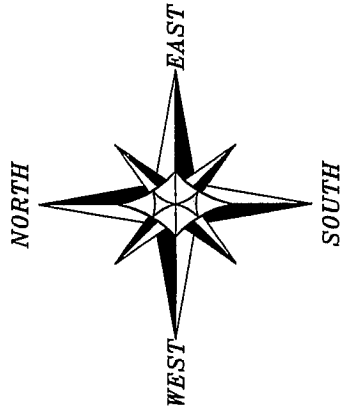
DESCRIPTION OF LINE SURVEYED:

Commencing at the North Quarter (N 1/4) corner of Section Twenty (20), Town Four (4) North, Range Three (3) West of the 4th P.M., South Lancaster Township, Grant County, Wisconsin;
 thence North 89° 22' 39" West 411.33' along the North line of said Section to a point in the centerline of County Highway "N" and the point of beginning;
 thence North 89° 22' 39" West 921.45' along said North line to the Northwest corner of the Northeast Quarter (NE 1/4) of the Northwest Quarter (NW 1/4) thereof and the terminus point.



LEGEND

- ⊕ No. 8 rebar found with Grant County Aluminum Cap
- No. 6 x 24" rebar set with cap
- ⊞ T-post set
- + No monument set
- x-x- Approximate fence location



The North line of the NW 1/4 of Section 20 is assumed to bear N 89°22'39" W.

SURVEYOR'S CERTIFICATE:

I, Larry L. Austin, Registered Wisconsin Land Surveyor, hereby certify:

That the above description was surveyed, mapped and monumented as shown on this plat by me or under my direct supervision.

That this survey was prepared under the instructions of Gerald Weber.

That to the best of my knowledge and belief, this plat is an accurate representation thereof.

That all plats that do not show a seal imprint in red ink may contain unauthorized alterations.

The certification contained on this document shall not apply to any copies.

Dated this 6th day of May, 2009.

Larry L. Austin
 Larry L. Austin, S-1903



Austin Engineering LLC

Prepared For: **GERALD WEBER**

4211 HWY 81 E, LANCASTER, WI 53813
 PHONE 608-723-6363 FAX 608-723-6702

JOB NO: 09s080
 FIELDBOOK: TDS RANGER
 G:\T4NR3W\17
 H:\PLAT\T4NR3W\20\09s080-WEBER

DRAWN BY: AJ AUSTIN
 APPROVED: LL AUSTIN
 CREW: BS-SA