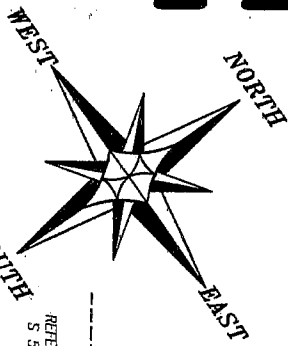


PLAT OF SURVEY

LEGEND

- No. 6 x 24" rebar set with cap
- ⊙ No. 6 x 12" rebar set with cap
- ⊙ P.K. Nail set in concrete
- No. 6 rebar found
- ⊙ Drill hole found
- + No monument set
- () Recorded as



The Southwesterly line of Block 11, Original Plat of the Village of Cassville is assumed to bear N 54°23'53" W.

REFERENCE MONUMENT
S 54°23'53" E 1.00'

BLOCK 11

PREVIOUS SURVEY
BY LARRY AUSTIN
DATED 3-16-2001

PREVIOUS SURVEY
BY LARRY AUSTIN
DATED 3-16-2001

81.00'
N 35°23'14" E

59.00'
140.00'

20.00'

N 35°23'14" E 140.00'

REFERENCE MONUMENT
S 54°23'53" E 1.00'

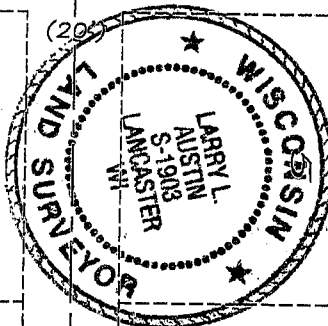
FREDRICK STREET

FRONT STREET

AMELIA STREET

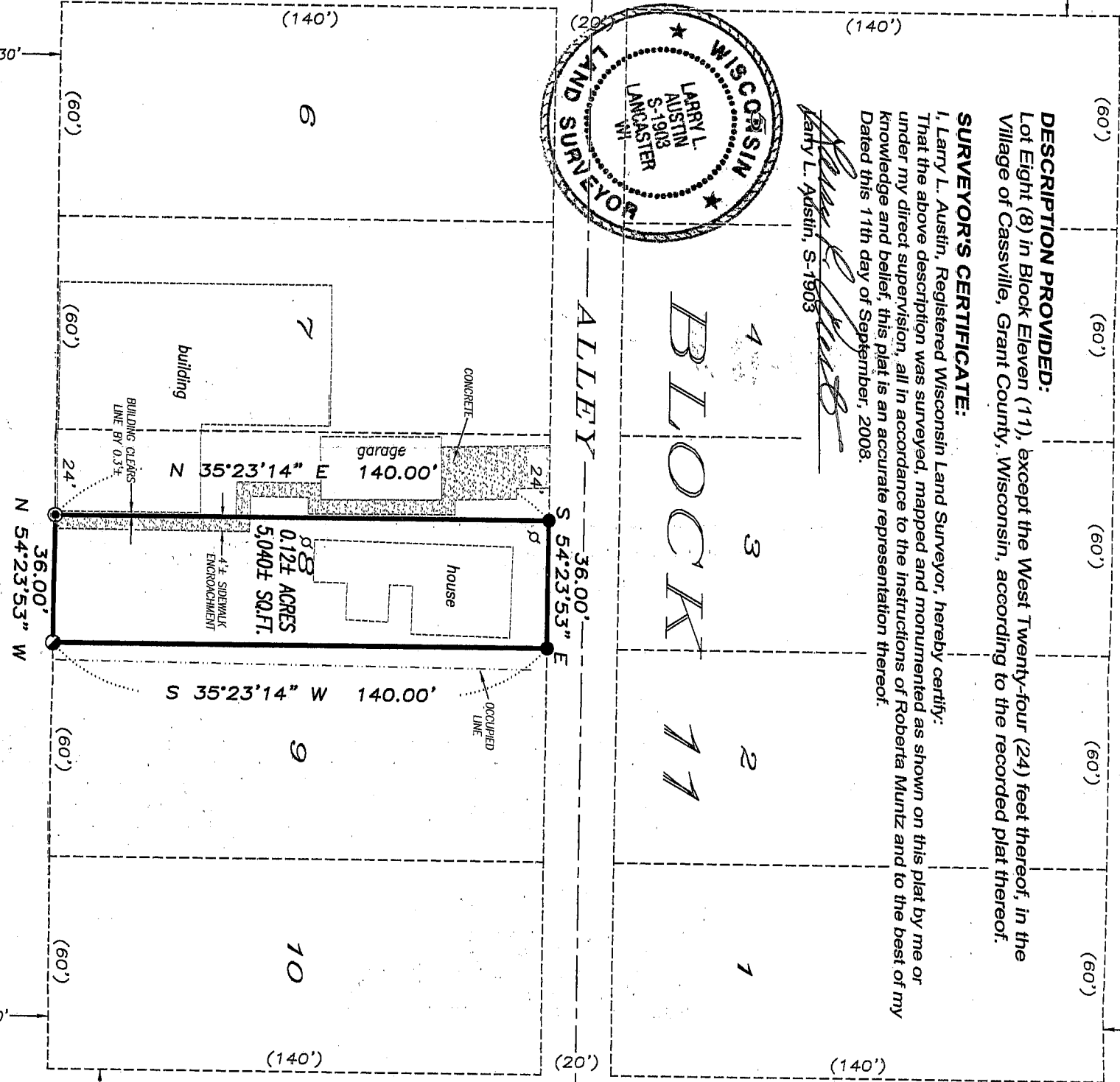
ALLEY

BLOCK 11



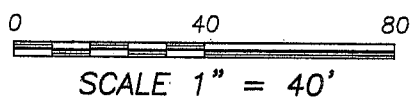
SURVEYOR'S CERTIFICATE:
I, Larry L. Austin, Registered Wisconsin Land Surveyor, hereby certify:
That the above description was surveyed, mapped and monumented as shown on this plat by me or under my direct supervision, all in accordance to the instructions of Roberta Muntz and to the best of my knowledge and belief, this plat is an accurate representation thereof.
Dated this 11th day of September, 2008.
Larry L. Austin
Larry L. Austin, S-1903

DESCRIPTION PROVIDED:
Lot Eight (8) in Block Eleven (11), except the West Twenty-four (24) feet thereof, in the Village of Cassville, Grant County, Wisconsin, according to the recorded plat thereof.



ALL PLANS THAT DO NOT SHOW A SEAL IMPRINT IN RED INK MAY CONTAIN UNAUTHORIZED ALTERATIONS. THE CERTIFICATION CONTAINED ON THIS DOCUMENT SHALL NOT APPLY TO ANY COPIES. DATED: SEPTEMBER 11, 2008.

Larry L. Austin



Austin Engineering LLC

Prepared For: **ROBERTA MUNTZ**

4211 HWY 81 E, LANCASTER, WI 53813
PHONE 608-723-6363 FAX 608-723-6702

JOB NO: 08s098
FIELDBOOK: 2325
G:\CASSVILLE
H:\PLAT\CASSVILLE\BLOCK-11\08s098-MUNTZ

DRAWN BY: AJ AUSTIN
APPROVED: LL AUSTIN
CREW: BS-SB-BD

SHEET 1 OF 1

SEP 15 2008