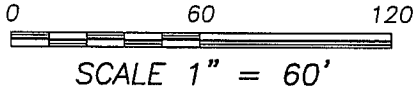


PLAT OF SURVEY

NORTH 1/4 CORNER
SECTION 15, T3N R1W

LEGEND

- ▲ 2" diameter iron pipe found
- ⊠ Stone monument found
- No. 6 rebar found
- △ 1" diameter iron pipe found
- No. 6 x 24" rebar set with cap
- () Recorded as



DESCRIPTION PROVIDED:

Lot Eight (8) in Carl's Addition to the Village (now City) of Platteville, Grant County, Wisconsin, according to the recorded map or plat thereof.

SURVEYOR'S CERTIFICATE:

I, Larry L. Austin, Registered Wisconsin Land Surveyor, hereby certify:

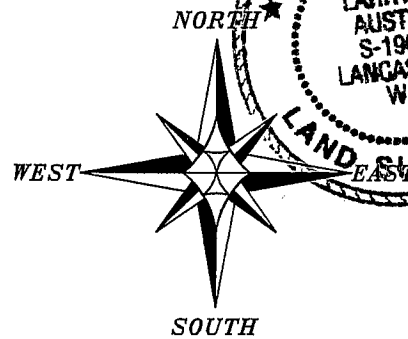
That the above description was surveyed, mapped and monumented as shown on this plat by me or under my direct supervision all in accordance with the instructions of Darrell Kallenbach and to the best of my knowledge and belief, this plat is an accurate representation thereof.

That all plans that do not show a seal imprint in red ink may contain unauthorized alterations.

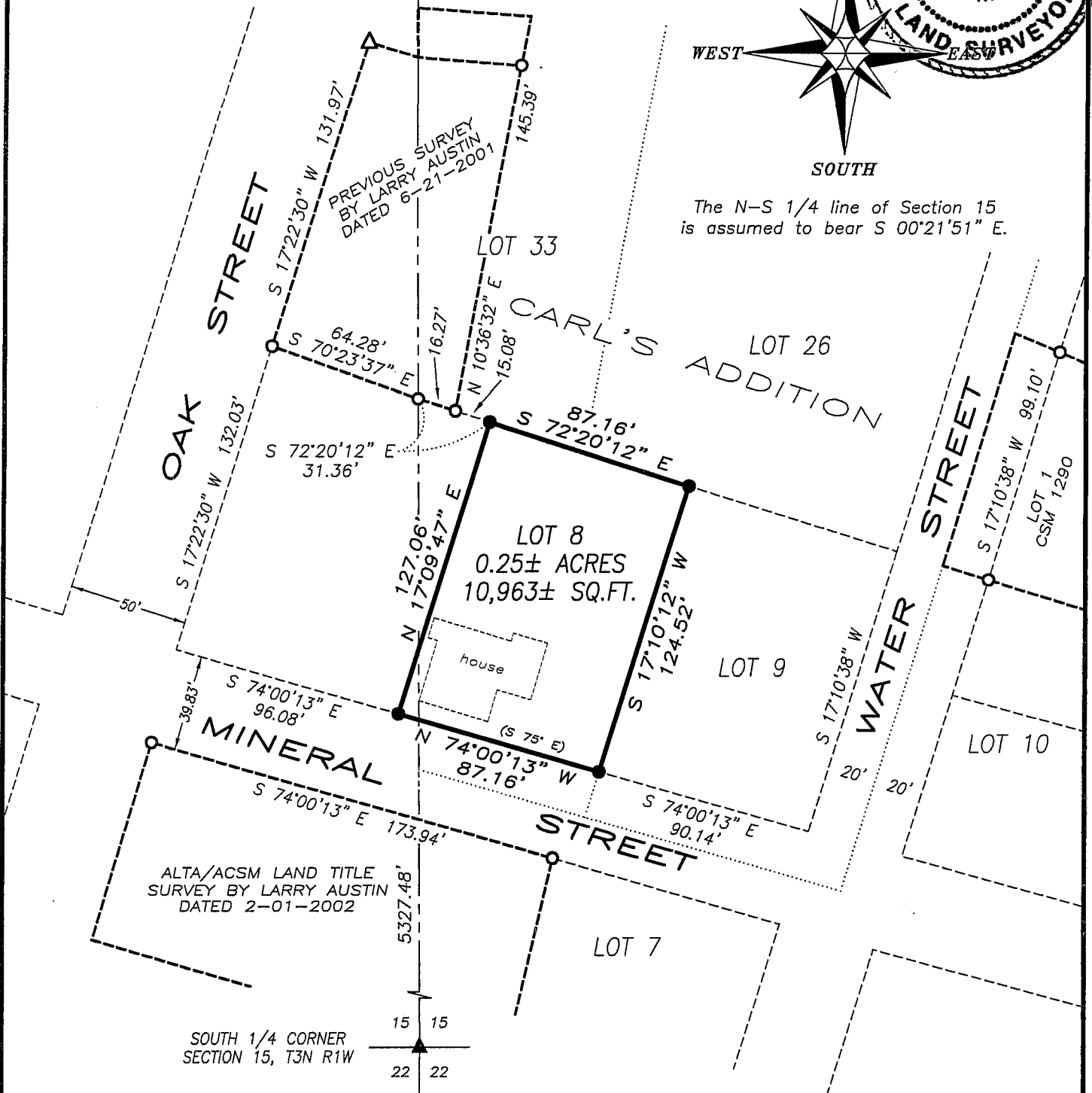
The certification contained on this document shall not apply to any copies.

Dated this 25th day of July, 2008.

Larry L. Austin
Larry L. Austin, S-1903



The N-S 1/4 line of Section 15 is assumed to bear S 00°21'51" E.



Austin Prepared For: DARRELL KALLENBACH
Engineering LLC

4211 HWY 81 E, LANCASTER, WI 53813
PHONE 608-723-6363 FAX 608-723-6702

JOB NO: 08s134
FIELDBOOK: TDSR
G:\PVILLE\WEYGNTS2
H:\PLAT\PVILLE\CARLS\08s134-KALLENBACH

DRAWN BY: AJ AUSTIN
APPROVED: LL AUSTIN
CREW: BS-SB-BD