

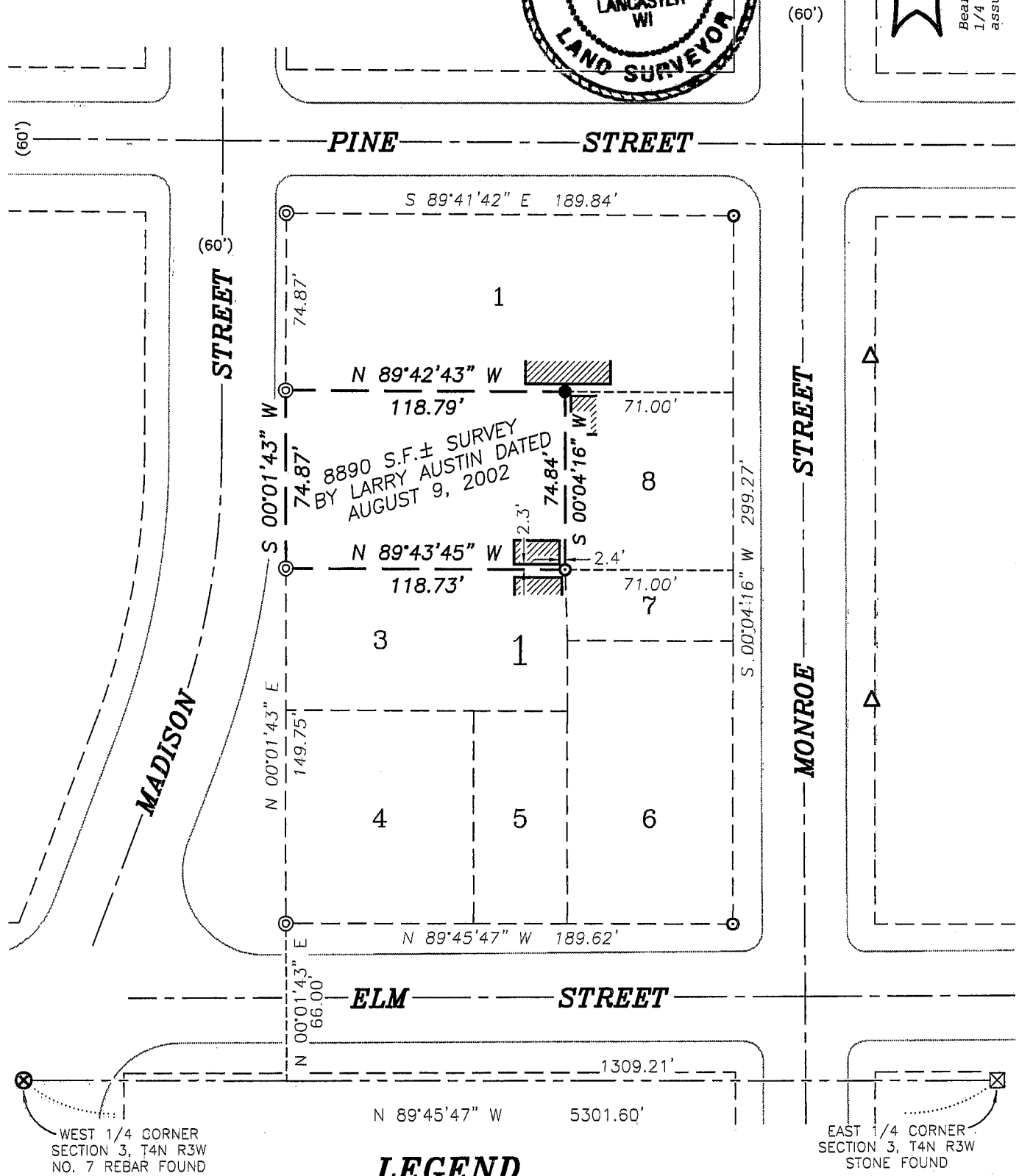
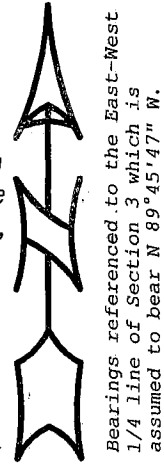
PLAT OF RESURVEY

The purpose of this resurvey was to restore the monument at the Northeast corner of the 8890 S.F.± property surveyed by Larry Austin dated 8-9-02.

SURVEYOR'S CERTIFICATE:

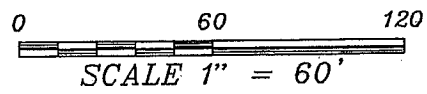
I, Larry L. Austin, Registered Wisconsin Land Surveyor, hereby certify:
That the above description was surveyed, mapped and monumented as shown on this plat by me or under my direct supervision all in accordance with the instructions of William Kauffman and to the best of my knowledge and belief, this plat is an accurate representation thereof.
Dated this 25th day of June, 2008.

Larry L. Austin
Larry L. Austin, S-1903

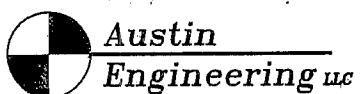


LEGEND

- ⊙ No. 6 rebar found with cap
- No. 6 x 24" rebar reset with cap
- ⊙ 1/4" dia. drill hole found in concrete
- △ 1" diameter iron pipe found



JUL 09 2008



4211 HWY 81 E, LANCASTER, WI 53813
PHONE 608-723-6363 FAX 608-723-6702

Prepared For: **WILLIAM KAUFFMAN**

JOB NO: 08S122
FIELDBOOK: TDSR, 2219
G:\LANCSTER\FUNK
H:\PLAT\LANCSTER\BURTS\08S122-KAUFFMAN

DRAWN BY: SW AUSTIN
APPROVED: LL AUSTIN
CREW: BS-SA-BD-SB