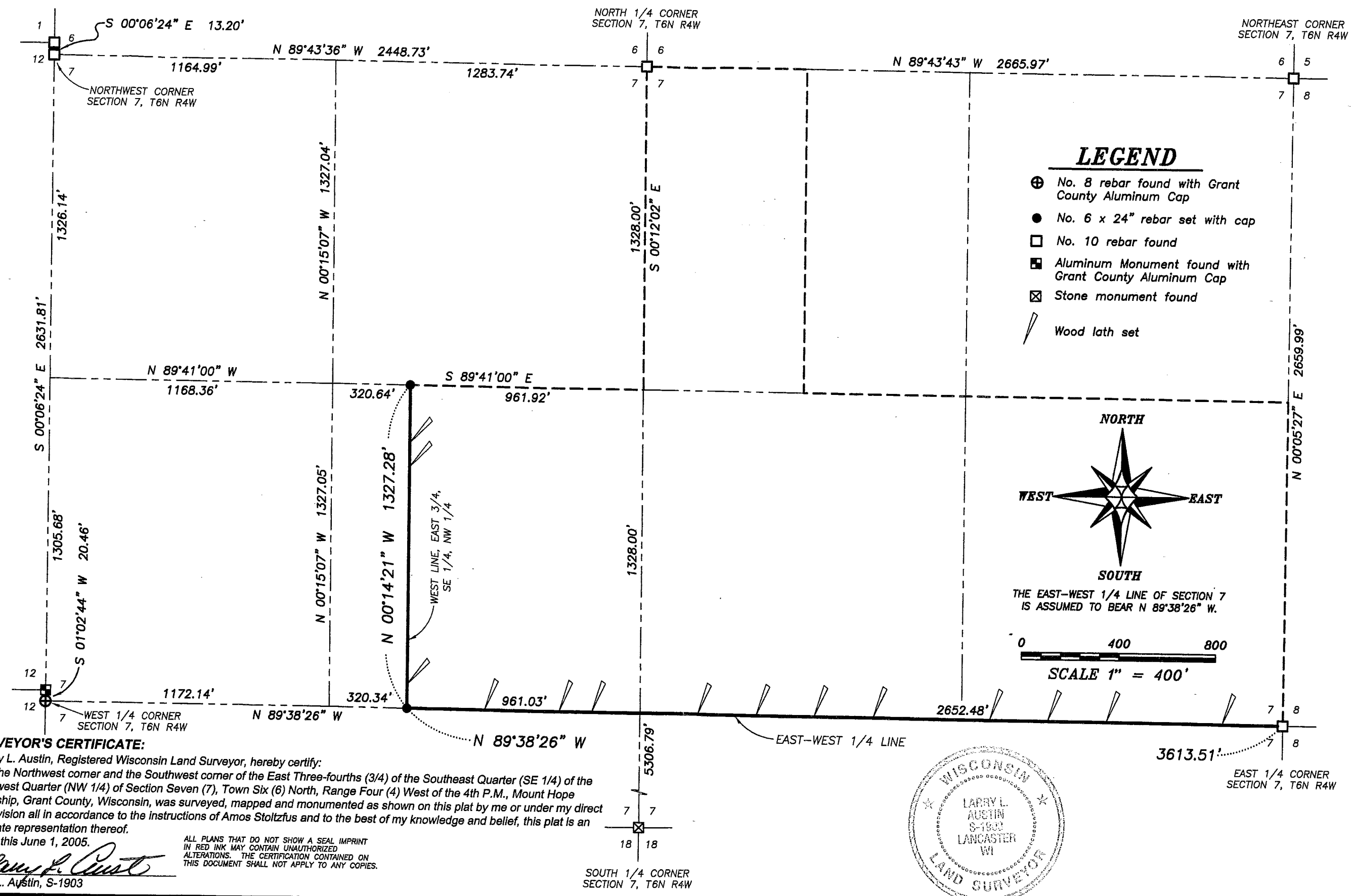


PLAT OF SURVEY



LEGEND

- ⊕ No. 8 rebar found with Grant County Aluminum Cap
- No. 6 x 24" rebar set with cap
- No. 10 rebar found
- Aluminum Monument found with Grant County Aluminum Cap
- ⊠ Stone monument found
- ∖ Wood lath set

NORTH

SOUTH

WEST EAST

THE EAST-WEST 1/4 LINE OF SECTION 7 IS ASSUMED TO BEAR N 89°38'26" W.

0 400 800

SCALE 1" = 400'

SURVEYOR'S CERTIFICATE:
 I, Larry L. Austin, Registered Wisconsin Land Surveyor, hereby certify:
 That the Northwest corner and the Southwest corner of the East Three-fourths (3/4) of the Southeast Quarter (SE 1/4) of the Northwest Quarter (NW 1/4) of Section Seven (7), Town Six (6) North, Range Four (4) West of the 4th P.M., Mount Hope Township, Grant County, Wisconsin, was surveyed, mapped and monumented as shown on this plat by me or under my direct supervision all in accordance to the instructions of Amos Stoltzfus and to the best of my knowledge and belief, this plat is an accurate representation thereof.
 Dated this June 1, 2005.

Larry L. Austin
 Larry L. Austin, S-1903

ALL PLANS THAT DO NOT SHOW A SEAL IMPRINT IN RED INK MAY CONTAIN UNAUTHORIZED ALTERATIONS. THE CERTIFICATION CONTAINED ON THIS DOCUMENT SHALL NOT APPLY TO ANY COPIES.



SHEET 1 OF 1

DRAWN BY: AJ AUSTIN
 APPROVED: LL AUSTIN
 CREW: BS-SB-BD

Prepared For: AMOS STOLTZFUS

JOB NO: 05s102
 FIELDBOOK: TDS RANGER
 G:\T6NR6W\15
 H:\PLAT\T6NR4W\07\05s102-STOLTZFUS

Austin Engineering inc
 4211 HWY 81 E, LANCASTER, WI 53813
 PHONE 608-723-6363 FAX 608-723-6702