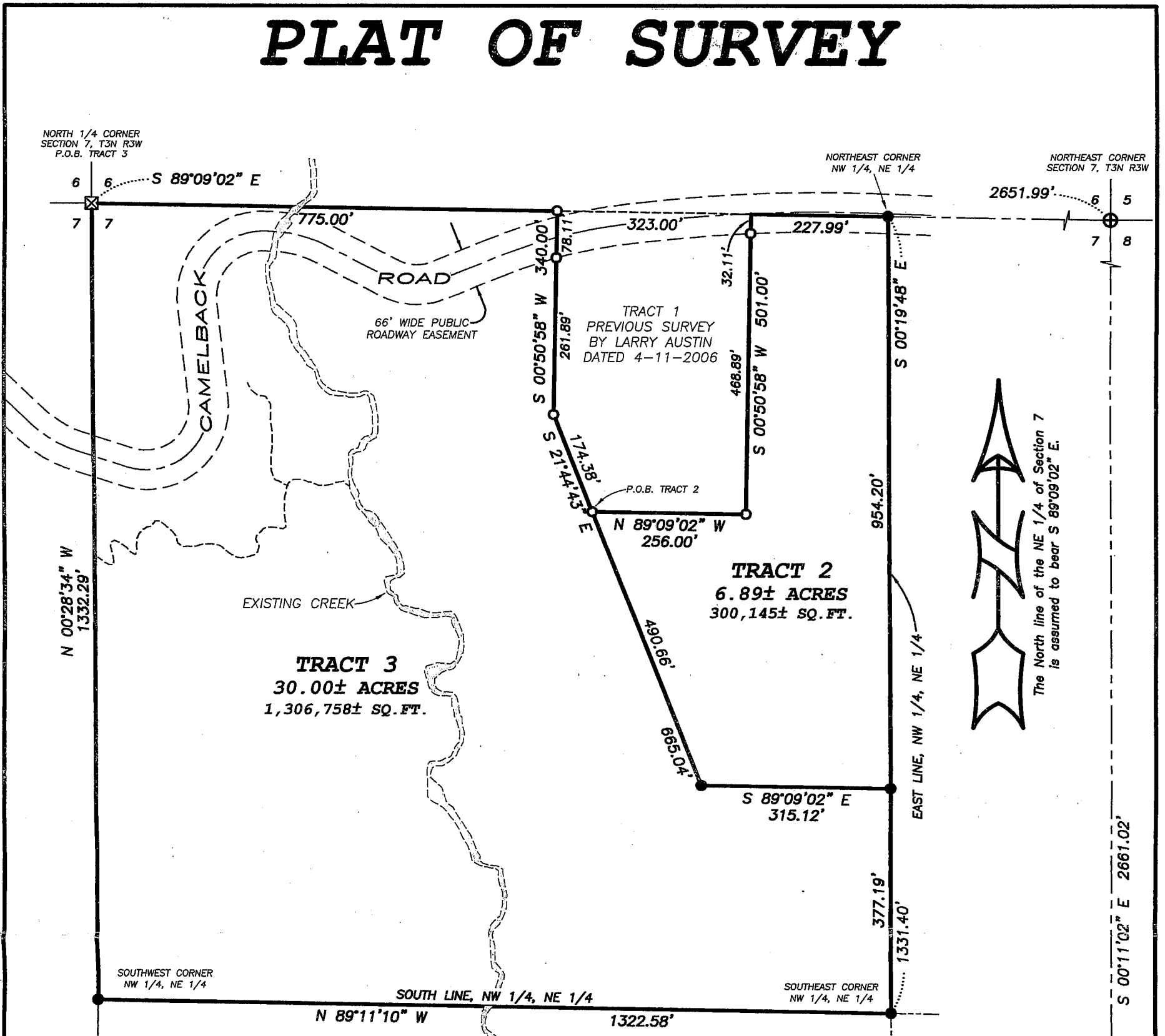


PLAT OF SURVEY



TRACT 2 DESCRIPTION:
 Part of the North Quarter (NW 1/4) of the Northeast Quarter (NE 1/4) of Section Seven (7), Town Three (3) North, Range Three (3) West of the 4th P.M., Potosi Township, Grant County, Wisconsin, containing 6.89 acres, more or less, and being described as follows: Commencing at the North Quarter (N 1/4) corner of said Section; thence South 89° 09' 02" East 775.00' along the North line of said Section to a No. 6 rebar; thence South 00° 50' 58" West 340.00' along the West line of Tract 1 of a previous survey by Larry Austin dated 4-11-2006 to a No. 6 rebar; thence South 21° 44' 43" East 174.38' along a line of said Tract 1 to a No. 6 rebar marking the point of beginning; thence continuing South 21° 44' 43" East 490.66' to a No. 6 rebar; thence South 89° 09' 02" East 315.12' to a No. 6 rebar on the East line of the Northwest Quarter (NW 1/4) of said Northeast Quarter (NE 1/4); thence North 00° 19' 48" West 954.20' along said East line to a No. 6 rebar marking the Northeast corner thereof; thence North 89° 09' 02" West 227.99' along the North line of said Section to the Northeast corner of said Tract 1; thence South 00° 50' 58" West 501.00' along the East line of said Tract 1 to a No. 6 rebar; thence North 89° 09' 02" West 256.00' along the South line of said Tract 1 to the point of beginning.

TRACT 3 DESCRIPTION:
 Part of the Northwest Quarter (NW 1/4) of the Northeast Quarter (NE 1/4) of Section Seven (7), Town Three (3) North, Range Three (3) West of the 4th P.M., Potosi Township, Grant County, Wisconsin, containing 30.00 acres, more or less, and being described as follows: Commencing at the North Quarter (N 1/4) corner of said Section, said corner being the point of beginning; thence South 89° 09' 02" East 775.00' along the North line of said Section to a No. 6 rebar; thence South 00° 50' 58" West 340.00' along the West line of Tract 1 of a previous survey by Larry Austin dated 4-11-2006 to a No. 6 rebar; thence South 21° 44' 43" East 174.38' along a line of said survey to a No. 6 rebar; thence continuing South 21° 44' 43" East 490.66' to a No. 6 rebar; thence South 89° 09' 02" East 315.12' to a No. 6 rebar on the East line of the Northwest Quarter (NW 1/4) of said Northeast Quarter (NE 1/4); thence South 00° 19' 48" East 377.19' along said East line to a No. 6 rebar marking the Southeast corner thereof; thence North 89° 11' 10" West 1322.58' along the South line of the Northwest Quarter (NW 1/4) of said Northeast Quarter (NE 1/4) to a No. 6 rebar marking the Southwest corner thereof; thence North 00° 28' 34" West 1332.29' along the West line of the Northwest Quarter (NW 1/4) of said Northeast Quarter (NE 1/4) to the point of beginning.

SURVEYOR'S CERTIFICATE:
 I, Larry L. Austin, Registered Wisconsin Land Surveyor, hereby certify:
 That the above descriptions were surveyed, mapped and monumented as shown on this plat by me or under my direct supervision.
 That conformance with local ordinances are not guaranteed with this survey.
 That this survey was prepared under the instructions of Liz Wyman.
 That to the best of my knowledge and belief, this plat is an accurate representation thereof.

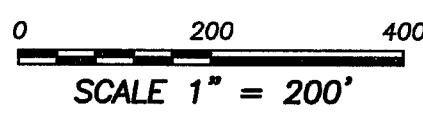
Dated this 18th day of October, 2006

Larry L. Austin, S-1903S-1903
 Wisconsin Land Surveyor
 All plans that do not show a seal
 in red ink may contain
 unauthorized alterations.
 The certification contained on this
 document shall not apply to any copies.

S 89°13'19" E 5371.10'

LEGEND

- ⊗ Stone monument found
- ⊕ No. 8 rebar found with Grant County Aluminum Cap
- No. 6 rebar found
- No. 6 x 24" rebar set with cap



Austin Engineering Inc

4211 HWY 81 E, LANCASTER, WI 53813
 PHONE 608-723-6363 FAX 608-723-6702

Prepared For: LIZ WYMAN

JOB NO: 06s242
 FIELDBOOK: 2524
 G:\T3NR3W\T3NR3W
 H:\PLAT\ T3NR3W\07\06s242-WYMAN

DRAWN BY: AJ AUSTIN
 APPROVED: LL AUSTIN
 CREW: BS-SB-BD